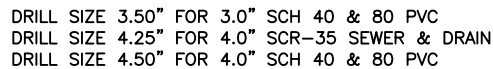


ITEM	PART NO.	DESCRIPTION	QTY.
11	DP0605	CHANNEL SLOPED POLYCAST 600 – 48.00”	1
12	LIT-PC8	INSTALLATION MANUAL	1

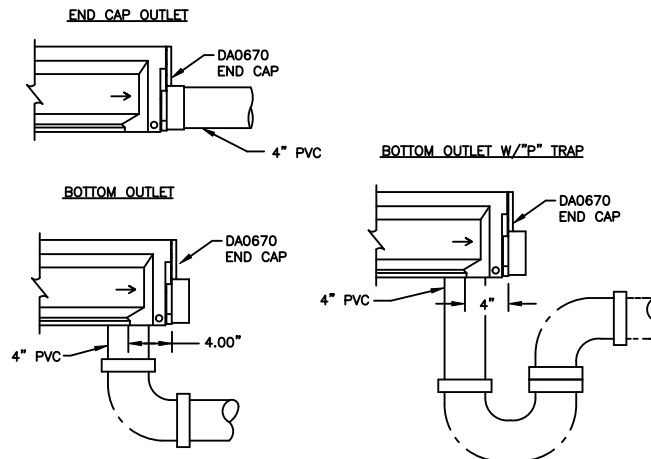



CUSTOMER APPROVAL	
DATE:	_____
NAME:	_____
SIGNATURE:	_____
<p>I HAVE REVIEWED THE SYSTEM DIMENSIONS PROVIDED AND APPROVE TDS TO PROCEED WITH RELEASING FOR PRODUCTION. I UNDERSTAND THAT ONCE RELEASED FOR PRODUCTION, ANY REVISION WILL RESULT IN ADDITIONAL CHARGES.</p>	
CUSTOM ITEMS ARE NON-RETURNABLE	

DISCLAIMER - THE CUSTOMER AND THE CUSTOMER'S ARCHITECTS, ENGINEERS, CONSULTANTS, AND OTHER PROFESSIONALS ARE COMPLETELY RESPONSIBLE FOR THE SELECTION, INSTALLATION AND MAINTENANCE OF ANY PRODUCT PURCHASED FROM TRENCH DRAIN SYSTEMS AND/OR ITS MANUFACTURERS. TRENCH DRAIN SYSTEMS MAKES NO WARRANTY, EXPRESS OR IMPLIED, AS TO THE SUITABILITY, DESIGN, MERCHANTABILITY, OR FITNESS OF THE PRODUCT FOR CUSTOMERS APPLICATION. THE DRAWING AND INFORMATION PROVIDED REMAIN THE PROPERTY AND COPYRIGHT OF THE MANUFACTURER LISTED. THE MANUFACTURER RESERVES THE RIGHT TO MODIFY SPECIFICATION WITHOUT NOTICE.

CHANNEL OUTLET DETAILS

(ALL END CAPS ARE TO BE SECURED WITH AN ADHESIVE)



REV	DESCRIPTION			BY	DATE
 TDS TRENCH DRAIN SYSTEMS PO BOX 377 FREMONT, OH 43420 610-638-1221		DRAWN: CJP		DATE: 10.18.19	
		CHECKED:			
		DESCRIPTION POLYCAST 600 SYSTEM LENGTH; 24FT DG0657R GRATE			
		DWG. NO. PCK6-DG0657R-24			
		DO NOT SCALE DRAWING		WEIGHT: 469#	SHEET 1 OF 1

PROPRIETARY AND CONFIDENTIAL; THE INFORMATION CONTAINED IN THIS DRAWING IS THE SOLE PROPERTY OF TDS. ANY REPRODUCTION IN PART OR WHOLE WITHOUT THE WRITTEN PERMISSION OF TDS IS PROHIBITED.