

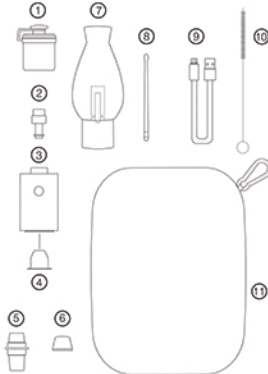
LINX APOLLO

USER MANUAL

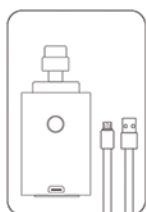
Linx Apollo comes with a one year limited warranty
www.LinxVapor.com

IN THE BOX

- ① 1 Carb Cap
- ② 1 All Quartz Atomizer
- ③ 1 2600mAh Apollo Base
- ④ 1 Silicone Airflow Sleeve (Installed in ② Apollo Base)
- ⑤ 1 Male Water Pipe Adaptor (Fits 14mm or 18mm Glassware Downstem)
- ⑥ 1 Silicone Airflow Regulator
- ⑦ 1 Glass Bubbler
- ⑧ 1 Tool
- ⑨ 1 USB Charging Cable
- ⑩ 1 Cleaning Brush
- ⑪ 1 Carrying Case



CHARGING



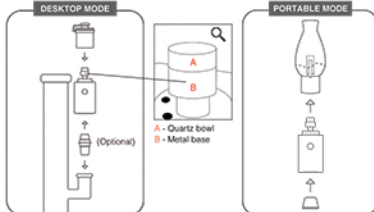
Plug the USB charger into the Apollo port and connect it to a viable USB power outlet. The power indicator blinks while charging and turns solid when fully charged. A full charge takes about two to three hours.

LOADING



Load material into the Apollo atomizer, no larger than a grain of rice. Using too much material drains battery power and requires a longer time to heat up and to cool down.

SET UP

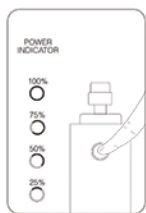


DESKTOP MODE: Assemble the Apollo base and other parts. Connect the base directly to your glassware with a female downstem, or insert the Apollo water pipe adaptor to the base then attach to the glassware with a male downstem.

PORTABLE MODE: Connect the Apollo base and atomizer to the bubbler. Also attach the silicone airflow regulator and sleeve from the bottom of Apollo base.

*Hold the metal base (B), not the quartz bowl (A), to detach the atomizer. Twisting or applying force to the quartz bowl may damage the bowl and atomizer.

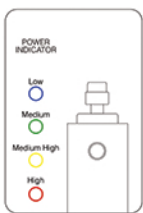
ON/OFF



Press the power button five times quickly to turn the device on or off. The device enters standby when turned on and the power indicator becomes solid and displays the battery charge level.

Click the power button once and the device will vibrate to activate or stop heating. The power indicator rotates during heating.

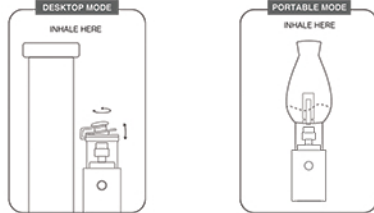
TEMP SETTINGS



The device is default to the last used temperature when turned on. Press the power button three times quickly to cycle between the four temp settings.

OVERHEAT PROTECTION
The device will automatically enter standby after 30 seconds of continuous heating, and shut off after standing by for 30 seconds.

VAPING

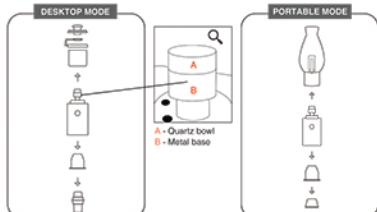


DESKTOP MODE: Inhale from the glassware mouthpiece with slow steady draws. Gently twist, rotate, open and close the carb cap top to adjust air flow for optimal vapor production.

PORTABLE MODE: Fill bubbler with water. Be sure not to fill above the precolator. Inhale from the bubbler mouthpiece with slow steady draws. Use finger to cover and uncover the silicone airflow regulator to adjust air flow for optimal vapor production.

HEAT BOOST: Hold the power button to boost the temperature. The power indicator rotates quickly.

DISASSEMBLY

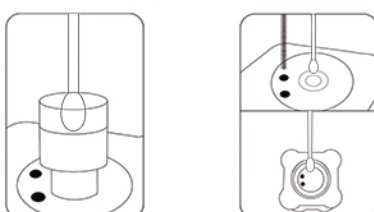


Completely disassemble the Apollo into parts before cleaning.

*Hold the metal base (B), not the quartz bowl, to detach the atomizer. Twisting or applying force to the quartz bowl (A) may damage the bowl and atomizer.

*Be sure to fully disassemble the silicone Carb Cap Ring from the glass pieces when in desktop mode.

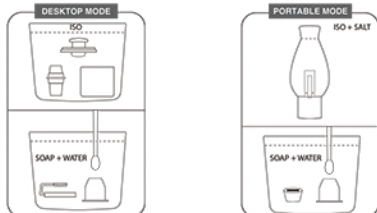
CLEANING ATOMIZER AND AIR PATH



Turn the Apollo to the red setting or Heat Boost to burn off reclaim in the atomizer. Power off the device and make sure it's fully cooled down. Wet cotton swab with isopropyl alcohol. Gently swab the interior of the quartz chamber in a circular motion. Do not use force as this may permanently damage your atomizer. Swab clean the exterior of the atomizer.

Be sure to detach the silicone airflow regulator and sleeve from the bottom of Apollo base. Clean both the top and bottom surfaces of the Apollo base with a cotton swab. Also brush clean the two airholes.

CLEANING OTHER PARTS



DESKTOP MODE: Submerge the glass pieces into isopropyl alcohol to dissolve any reclaim. Clean all silicone parts with hot soapy water.

PORTABLE MODE: Mix isopropyl alcohol and salt and swish the solution in Apollo bubbler for around five minutes. Clean all silicone parts with hot soapy water.

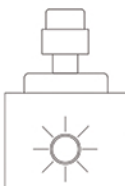
*Be sure to rinse all glass and silicone pieces thoroughly with running water and let dry before use. Do not use any alcohol solution on silicone as alcohol breaks down and chemically damages silicone.

PRO TIPS

Short Circuit Protection
Flash white three times
When the atomizer is short circuited or broken, Apollo shuts off automatically. Replace with a new atomizer immediately.

Atomizer Undetected
Flash white five times
When the atomizer is not present or doesn't connect well with the Apollo base, the device will shut off automatically. Screw the atomizer to the Apollo base, make sure they are tightly attached.

Low Battery Indication
Flash white ten times
When the battery runs low, charge Apollo before next use.



ABOUT SAFETY

Do not use this device while charging. This will cause damage to the device.

To prevent the device from overheating, do not leave it charging overnight.

Do not charge unit on bare carpet or rugs.

Do not drop, deform, bend, crush, puncture, microwave or paint this device.

Take caution and dispose in the correct receptacle. Do not dispose in trash.

Keep this device away from children.

Use caution when handling this device, the atomizer area will become hot during use and while cleaning.

Do not clean this device in any way other than instructed by Linx Vapor.

Do not attempt to repair or modify this device yourself.

Do not use in extreme environments such as high temperatures, high humidity, and avoid contact with liquids during use.

Do not use a damaged Linx charger or non-Linx charger. Incompatible chargers may carry a different voltage. Use only the charger provided. Failure to do so voids the limited warranty offered on Linx products.

LEGAL DISCLAIMER

Do not allow children, women who are pregnant or breastfeeding or those with a life-threatening illness to use this device. Linx Vapor and its affiliates are not responsible for any damage or personal injury caused by inappropriate, incorrect or irresponsible use of the device. The Linx Apollo is not a medical device and is not intended to diagnose, cure, treat or prevent any disease or other conditions. If you have any health problems, consult your doctor before using the Linx Apollo. The Linx Apollo is not intended to administer medical or illegal products of any kind, doing so voids the warranty. Any illegal use of this device could subject the user to severe fines, penalties, and/or imprisonment under the law of local jurisdiction.

Scan to watch!



21+ ONLY
FCC CE RECYCLE

FOLLOW US @LINXVAPOR