

⚠️ WARNINGS

1. Adult supervision is required during the assembly and carrying out of product maintenance. Keep fingers away from moving parts due to the risk of finger entrapment as injury may occur. All children and preteens should always ride with adult supervision.
2. Always wear protective equipment such as a helmet, elbow and knee pads, long sleeved shirts and long trousers. An adult supervisor should ensure the rider is wearing ALL appropriate safety equipment. Always wear fully enclosed shoes with laces tightened securely and tucked into your shoes. DO NOT ride barefooted or in sandals.
3. CHECK all bolts, wheels and handlebars for tightness before and after every use.
4. DO NOT use in low-light conditions, dusk or night, or during inclement weather. This scooter should only be ridden on dry, flat, level, ground. Riding the scooter on wet or slippery surfaces can cause loss of control. Avoid surfaces with sand, dirt, gravel or water as traction, braking and visibility are reduced.
5. DO NOT ride scooter with one hand. Both hands should always be on both handles. DO NOT turn too sharply on the scooter. DO NOT put body weight on the handlebars when turning as the handlebar may be forced, causing a twist, resulting in loss of control.
6. DO NOT ride the scooter on steep slopes as this can cause uncontrollable high speeds. High speeds can cause brake overuse resulting in brake failure or damage.
7. ALWAYS follow all local traffic and scooter riding laws and regulations. Stay away from roads and highways, cars and pedestrians and respect other users of sidewalks/pathways.
8. DO NOT make any modifications to this product. Any modification voids the Warranty.
9. Replace worn and/or broken parts immediately.
10. Injury may occur if precautions above are not observed or followed.

BRAKE USE: To stop or slow down, place your kicking foot on the brake pedal above the rear wheel or put your kicking foot on the ground. Excessive use of the brake will generate heat which can damage the wheel, brake and/or cause brake failure. Allow brake and wheels to cool if used continuously. DO NOT touch brake if hot as it may cause harm.

BEFORE USE check the brakes and make sure they are functioning properly.

- Check the handlebars, ensuring they are tightly secured to the deck head tube and that the Quick Release clamp is securely tightened and free of any rattling or play. If there is unwanted movement, open the clamp and tighten the bolt. Close the clamp and check again. Tighten the Set Screw again.
- Make sure the wheels are secure and roll without resistance. Never ride the scooter with loose fittings.

LIMITED WARRANTY

- This limited warranty is the only warranty for Melo Wheels scooters. There is no other express or implied warranty. The manufacturer warrants this product to be free of manufacturing defects for a period of one year from the date of purchase. This limited warranty does not cover normal wear and tear, or any damage, failure, or loss caused by improper assembly, maintenance, storage, or use of the scooter. This limited warranty will be void if the product is ever: used in a manner other than for recreation or transportation, modified in any way, rented.
- Check local laws and regulations to see where you can ride your scooter legally. The manufacturer is not liable for incidental or consequential loss or damage due directly or indirectly from the use of this product. To obtain service under this warranty you must contact Melo Wheels within the warranty period. Visit melowheels.com for chat or email contact.
- Melo Wheels will provide warranty replacements at its sole discretion. Authorized warranty services ONLY available through Melo Wheels from VUE Mobility. Specifications are subject to change without notice.

OWNER'S MANUAL



SIDEWINDER



**Your scooter model might be slightly different to the model shown here. Color and parts may vary.*

First, find the included 5mm Allen key

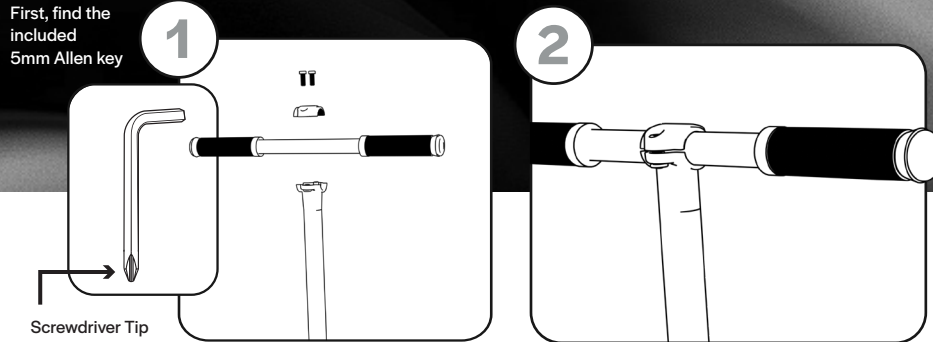
SIDEWINDER

COMPONENTS & PARTS



MAINTENANCE

It is the responsibility of the owner or guardian to periodically inspect the scooter wheels, nuts, T-bar, tightness of T-bar and bearings for wear and tear. Always make sure to tighten all bolts and nuts before you ride. Eventually wheels, self-locking nuts and bearings will wear and need replacement. The endurance of these components depends on the riding style of the rider. Lots of braking will wear out wheels, and riding in dirty or wet conditions will prematurely shorten bearing and fastener life. Worn wheels and bearings are considered normal wear-and-tear and are not covered by the VUE Mobility Limited Warranty. Wheels other than genuine Melo replacement wheels may not be compatible with your scooter. Always use genuine Melo Wheels replacement parts. Clean your scooter by wiping with a damp cloth. Do not use alcohol, solvent, or ammonia-based cleaners as they may damage components and ruin decals or grip tape.



1. Using the Allen key, unscrew the handlebar cap bolts. Insert the bolts through the handlebar top cap holes and into the bottom cap holes at the top of the stem.
2. Hand-tighten both sides evenly. Double-check the handlebar is centered. Using the Allen key, tighten both sides securely.

3. Find the Front Fork wheel assembly. Press in the crutch pin on the steerer tube to remove the top spacer from the steerer tube. Align the wheels of the Front Fork so that the crutch pin on the steerer tube is facing toward the rear. Slot the steerer tube into the head tube and pass it through. Align the bottom spacer notches with the notches in the head tube and press the head tube onto the spacer. Slip the top spacer onto the head tube. Align the notches of the top spacer with the slots, depress the crutch pin and push the spacer into place.

4. Place the washer onto the top of the steerer tube (it will be very tight). With the short slot of the internal clamp aligned with the crutch pin use the Internal clamp as a tool to push the washer down the steerer tube. (You may need to gently tap it with a hammer). When the washer reaches the crutch pin, depress the crutch pin and slide the clamp and the washer down until the crutch pin is in the clamp hole.

The Quick Release Clamp uses a cam action to deliver proper clamping power. Open the clamp. The knurled barrel nut controls how tightly the cam action will clamp. Make sure both move freely.

5. Align the stem slot to the crutch pin and with the Quick Release Clamp open, slide the stem onto the steerer tube until the crutch pin is in the hole.
6. Use your fingers to tighten the knurled barrel nut until stiff. Close the clamp fully, making sure it is tight and firmly closed.
7. With the Allen key screwdriver end, securely tighten the set screw at the front of the clamp. Never operate with a loose clamp.

FAILURE TO PROPERLY ASSEMBLE AND TIGHTEN ALL BOLTS AND COMPONENTS MAY CAUSE LOSS OF SCOOTER CONTROL AND INCREASE THE RISK OF FALLING. MAKE CERTAIN THAT YOU FULLY UNDERSTAND ALL THE ASSEMBLY AND MAINTENANCE INSTRUCTIONS. IF YOU ARE UNCERTAIN, PLEASE CONTACT MELO WHEELS CUSTOMER SERVICE VIA EMAIL AT MELOWHEELS.COM.

Visit our website www.melowheels.com for customer service, product support, replacement parts and general help.

Install the batteries

1. Remove the battery door with the included screwdriver.
2. Place the 3 AA batteries into the battery box according to the illustration inside.
3. Replace the door and use the Allen key screwdriver to securely fasten the retaining screw.

WARNING

1. Do not mix old and new batteries.
2. Do not mix alkaline, standard (carbon-zinc), or re-chargeable batteries.
3. The screwdriver is not a toy. The caregivers should retain the screwdriver for future use, to store it where the child cannot access it.