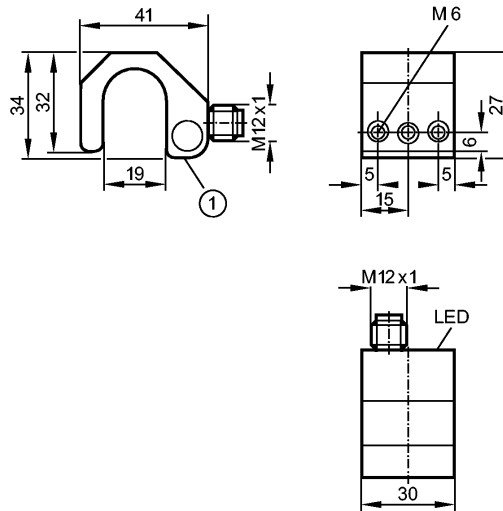


**no longer available - archive entry**

**replaced by: MK5113 + E11801**



1: sensing face



**Product characteristics**

Cylinder sensor	
Metal housing for integrated profile cylinder	
Quick disconnect	
Magnetic sensitivity 3 mT	
Travel speed max. 5 m/s	
Active face at the front	

**Electrical data**

Electrical design		DC NPN
Operating voltage [V]		10...30 DC
Current consumption [mA]		< 10
Reverse polarity protection		yes

**Outputs**

Output function		normally open
Voltage drop [V]		< 2
Current rating [mA]		300
Short-circuit protection		yes (non-latching)
Overload protection		yes
Switching frequency [Hz]		5000

**Monitoring range**

Magnetic sensitivity [mT]		3
Travel speed [m/s]		max. 5

**Accuracy / deviations**

Hysteresis [mm]		1
Repeatability [mm]		0.1

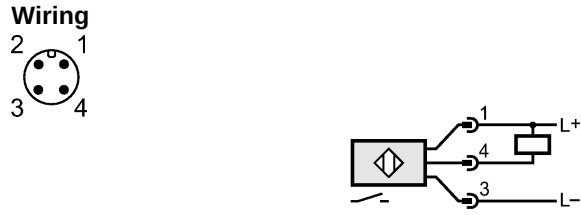
**Reaction times**

Power-on delay time [ms]		< 2
--------------------------	--	-----

**MK5040**

MKP3000-ANKG/US

Magnetic sensors, cylinder sensors

Environment	
Ambient temperature	[°C] -25...75
Protection	IP 67
Tests / approvals	
EMC	EN 60947-5-2
Shock / vibration resistance	30 g (11 ms) / 10-55 Hz (1 mm)
Mechanical data	
sensing face	Active face at the front
Housing materials	aluminum; plastics
Weight	[kg] 0.075
Displays / operating elements	
Output status indication	LED yellow
Electrical connection	
Connection	M12 connector
<b>Wiring</b> 	

Remarks	
Pack quantity	[piece] 1

ifm efector, inc. • 1100 Atwater Drive • Malvern • PA 19355 — We reserve the right to make technical alterations without prior notice. — US — MK5040 — 06.03.2003

**no longer available - archive entry**

**replaced by: MK5113 + E11801**