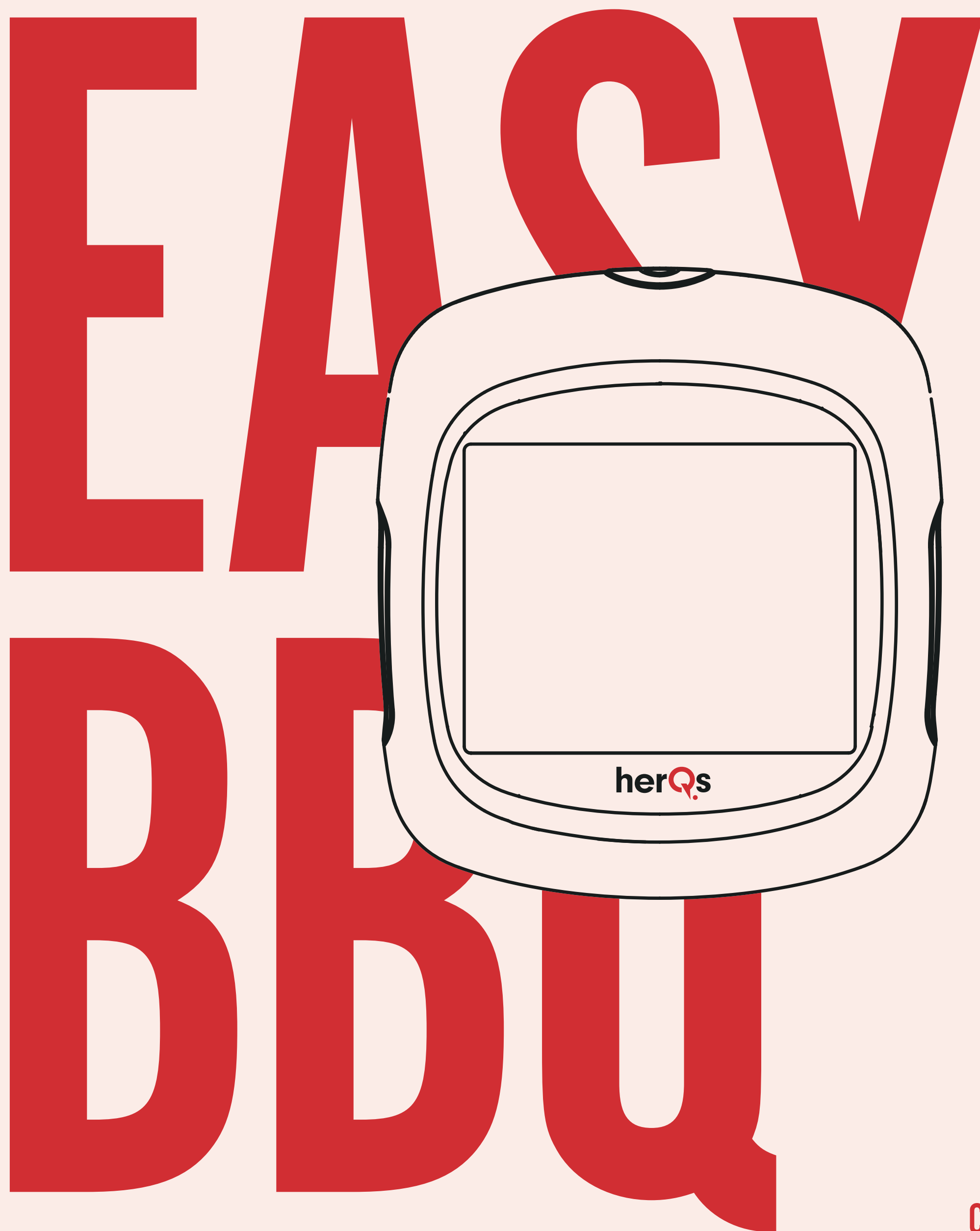


# MANUAL

herQs

01/08

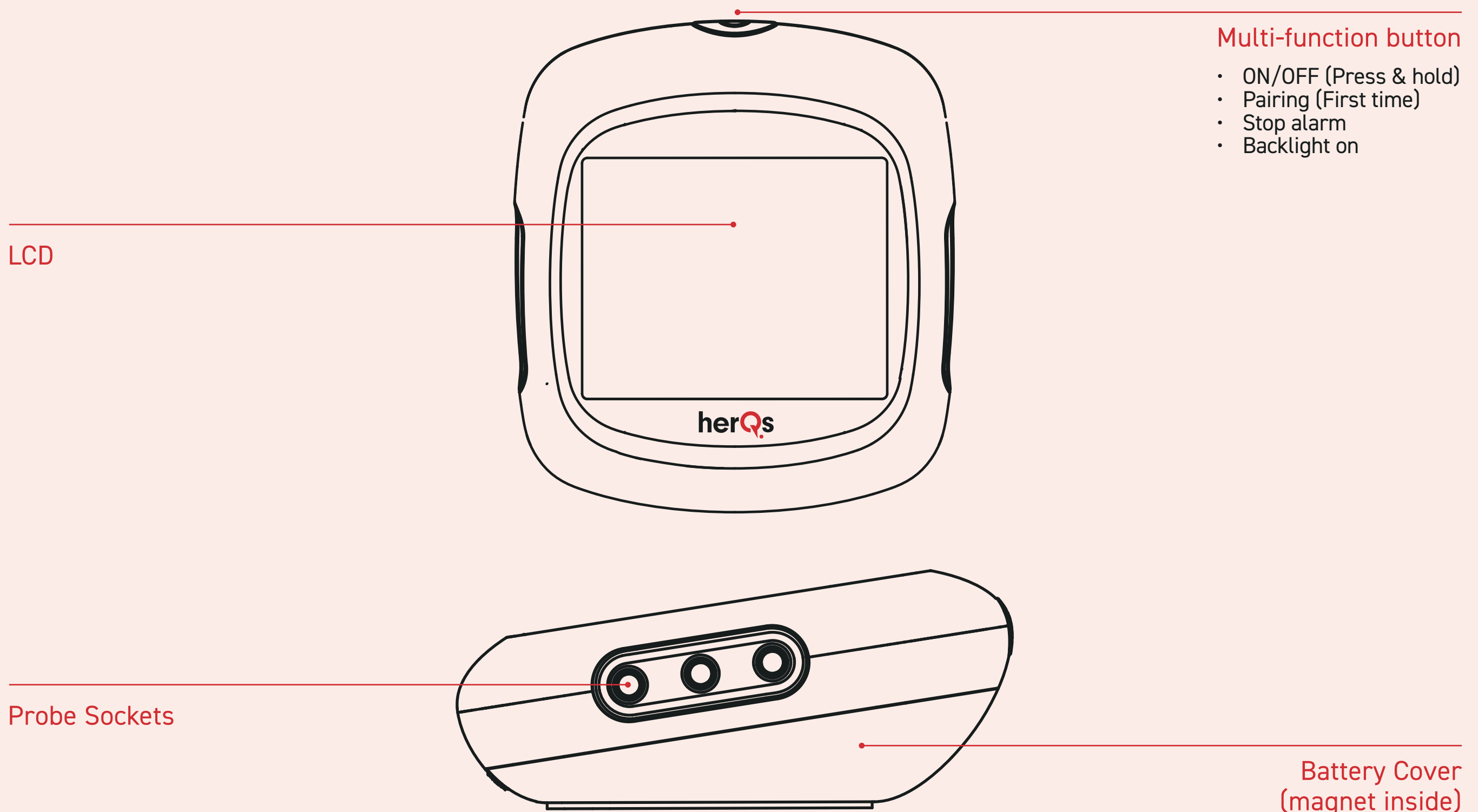


CHILL LIKE A PRO herQs

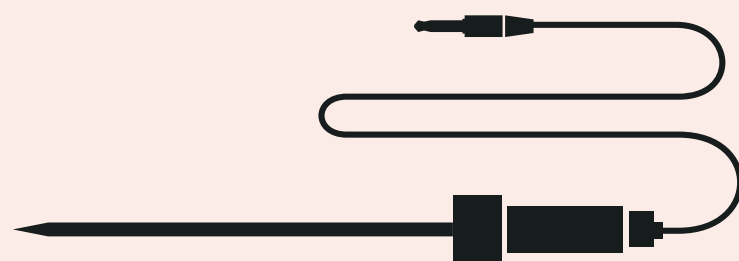
# MANUAL

## 1. OVERVIEW

02/08



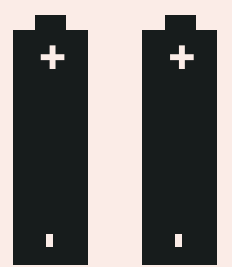
The device provides 6 sockets for probes, which enable you to monitor 6 items at once. If you need more probes besides the 2 probes in the standard package, they can be purchased separately.



Probe with cable X 2



Probe wrap cable X 2



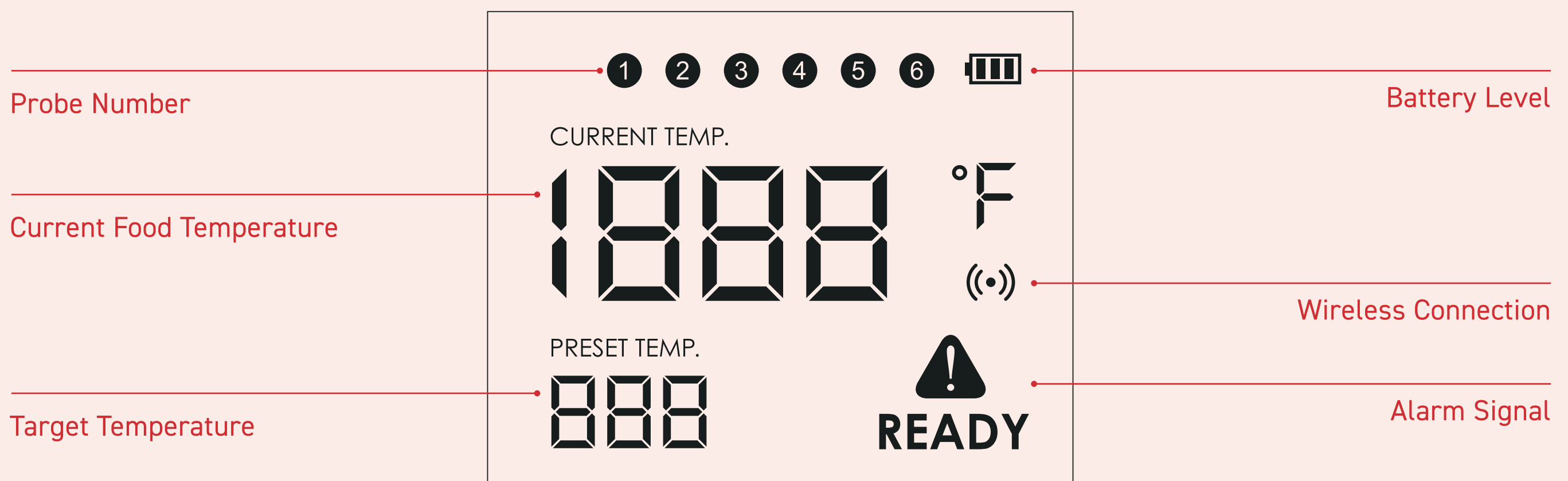
AA Battery X 2

Wireless frequency range: 2400MHz-2483.5MHz  
Average current: 3V/1.4uA  
Max wireless transmission power: 2.5 dbm

# MANUAL

## 2. DISPLAY

03/08



# MANUAL

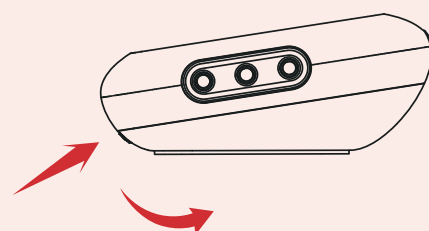
## 3. INSTALLATION

04/08

### 1 Install the batteries

2 AA size batteries are needed for this device.  
Make sure they are put in the right direction by following the icons on the unit.

#### A Slide the battery cover open



#### B Put in batteries, noticing the icons which show directions.



#### C Slide back the battery cover.

### 2 Install the probes

Up to 6 herQs probes can be connected to the device. The herQs smart thermometer works only with original herQs probes.

The device will keep scanning all ports for new probes as long as it is turned on.

The probe number and its temperature value will be displayed on the LCD screen one by one.

# MANUAL

## 4. APP SETUP

05/08

### 1 Download the APP

**A** Search the keyword 'herQs' in Appstore or Google Play, or scan the QR code with your phone.

**B** Download and install the (free) app.

Make sure your phone meets the requirements:

- iOS devices running version 11.0 or later.
- Android devices running version 5.0 or later.
- Bluetooth 4.0 support.



Scan to  
download the  
herQs app

### 2 Power ON/OFF

- Press and hold the button for more than 3 seconds when it is in OFF mode, it will be powered on. The LCD display will show 'ON'.
- If you do the same when it is in ON mode, it will be powered off.
- When no probe is connected, the device switches off automatically.

### 3 Activate device and pair with your phone

- A** Switch on your device and keep the bluetooth switch of your phone on.
- B** Launch the herQs app and enable mobile phone permissions.
- C** Follow the instructions in the app to activate the device.
- D** Use herQs app to Scan Scan the QR Code on the device or right.
- E** Choose the product you have on app.
- F** Press the Pairing/Stop Alarm Button (on the top of the device).
- G** Your device is now successfully connected.

Once device is paired with your phone, you don't need to do it again, unless you change to other phones.

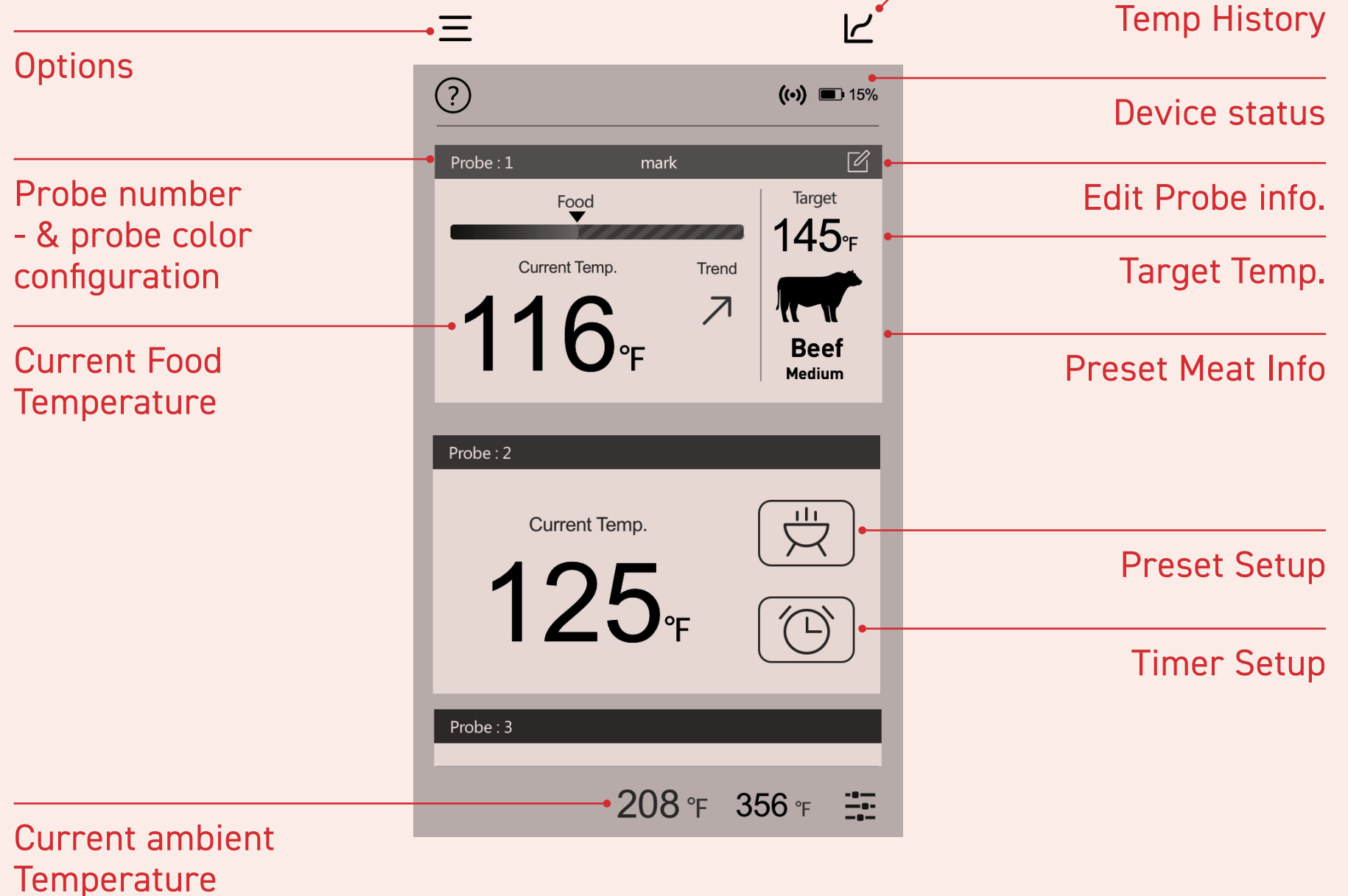
# MANUAL

## 5. OPERATION

06/08

Choose food type and preference for the food where each probe is inserted, the app and the device will display its current and target temperature.

When the food is ready, the app and the device will alarm you.

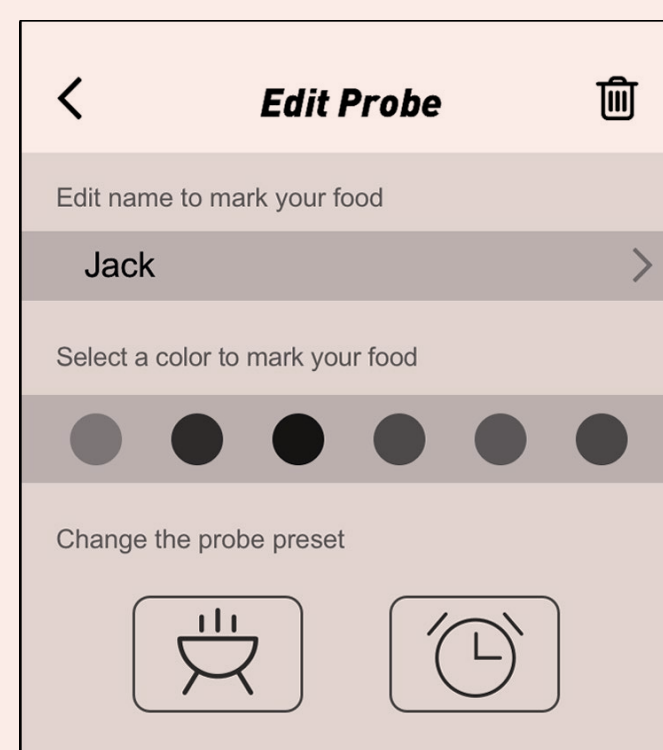


### Probe color configuration

It's difficult for you to distinguish different probes when you have several probes in use at the same time.

The app provides 6 colors for each channel, which enables users to set them to be identical to the color of the probes.

The probes come in 6 colors as well.



The user interface of the app may be changed when upgraded. Please follow the instructions in the app.

# MANUAL

## 6. WARNING

07/08

The included probes are NOT dishwasher safe.

### Sensor

Measurement range  
0-300°C/32-572°F

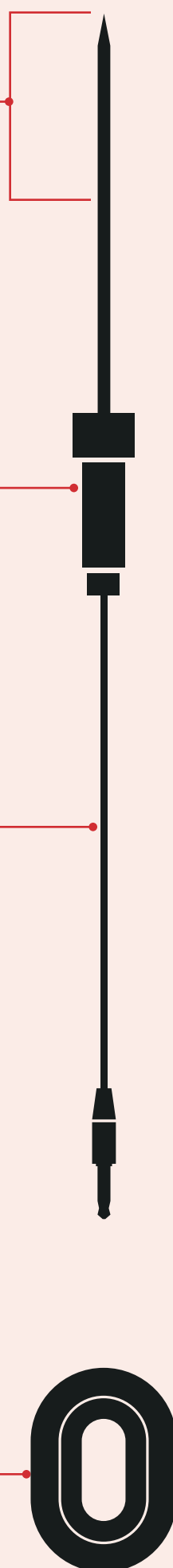
### Metal handle

Withstands heat up to  
380°C/716°F

### Teflon cable

with stainless steel mesh  
Withstands heat up to  
380°C/716°F

ABS Wrap 80°C



Operation is subject to the following two conditions:

- (1) This probe may not cause interference;
- (2) This probe must accept an interference, including interference that may cause undesired operation of this device.



# MANUAL

## 7. FCC CAUTION

08/08

This device complies with part 15 of the FCC Rules. Operation is subject to the following two conditions: (1) This device may not cause harmful interference, and (2) this device must accept any interference received, including interference that may cause undesired operation.

### 15.21 Information to user.

Any Changes or modifications not expressly approved by the party responsible for compliance could void the user's authority to operate the equipment.

### 15.105 Information to the user.

Note: This equipment has been tested and found to comply with the limits for a Class B digital device, pursuant to part 15 of the FCC Rules. These limits are designed to provide reasonable protection against harmful interference in a residential installation. This equipment generates uses and can radiate radio frequency energy and, if not installed and used in accordance with the instructions, may cause harmful interference to radio communications. However, there is no guarantee that interference will not occur in a particular installation. If this equipment does cause harmful interference to radio or television reception, which can be determined by turning the equipment off and on, the user is encouraged to try to correct the interference by one or more of the following measures:

- Reorient or relocate the receiving antenna.
- Increase the separation between the equipment and receiver.
- Connect the equipment into an outlet on a circuit different from that to which the receiver is connected.
- Consult the dealer or an experienced radio/TV technician for help.

This equipment complies with FCC radiation exposure limits set forth for an uncontrolled environment. This equipment should be installed and operated with minimum distance 20cm between the radiator & your body.