

Medallion 2 Architectural Display Systems



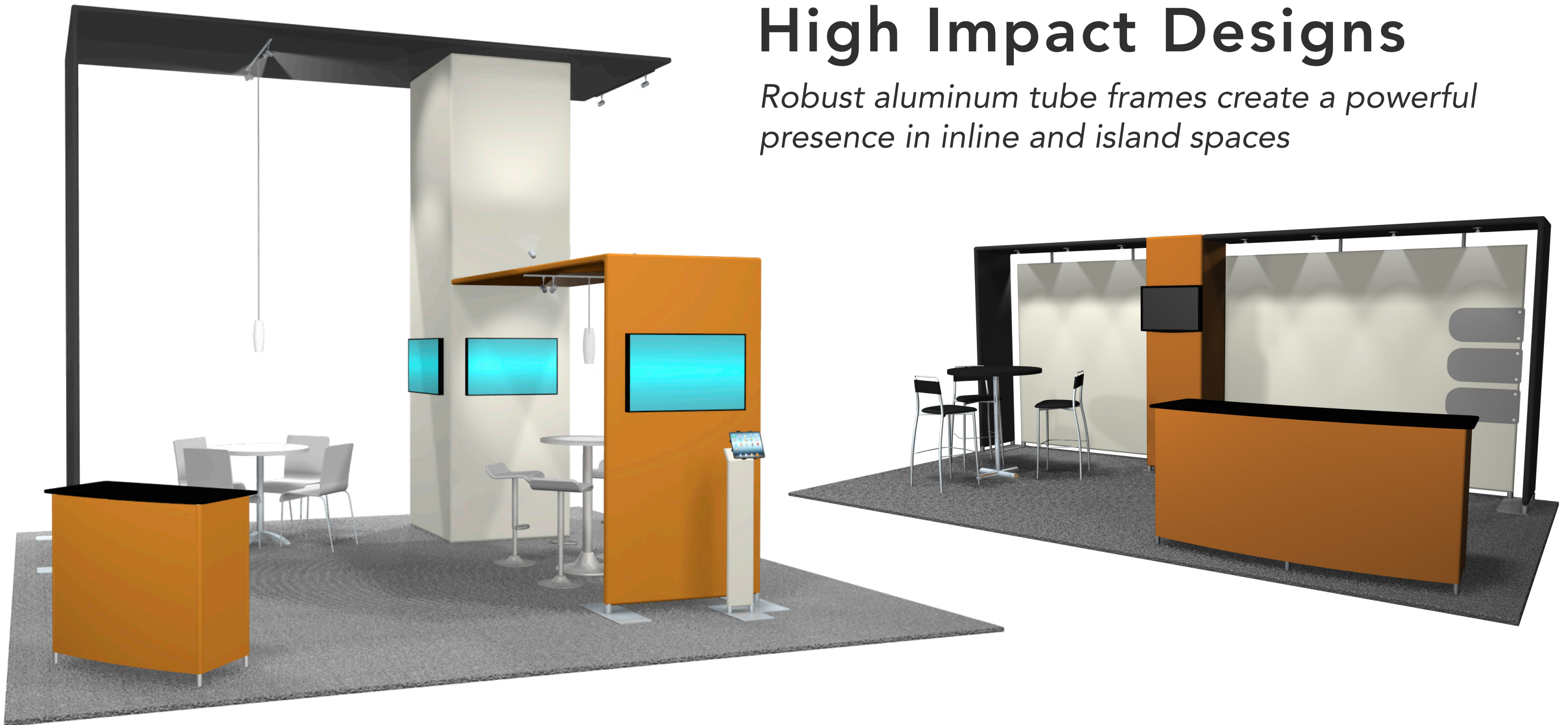
Bold & Dynamic

Lightweight & Compact

Tool-Less

High Impact Designs

Robust aluminum tube frames create a powerful presence in inline and island spaces



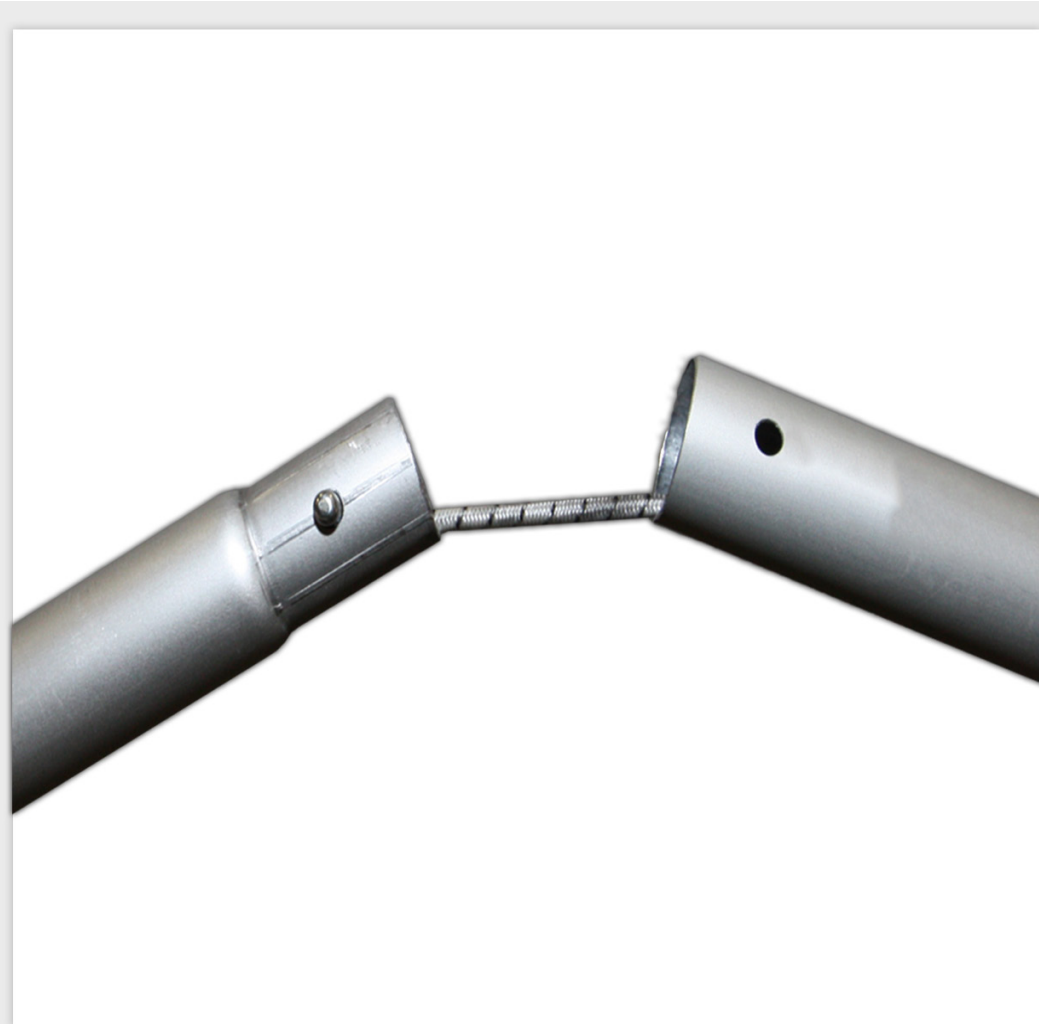
2" Tube Design Elements

Architectural elements with the convenience of pillowcase graphics

Add dimension with angles, canopies and recessed lighting



Simple Tool-less Setup



Spring Button Aluminum Tubes



Tension Fabric Graphics



Streamlined Zippers

Adjustable Layouts

Easily reconfigure your display for a larger or smaller booth space



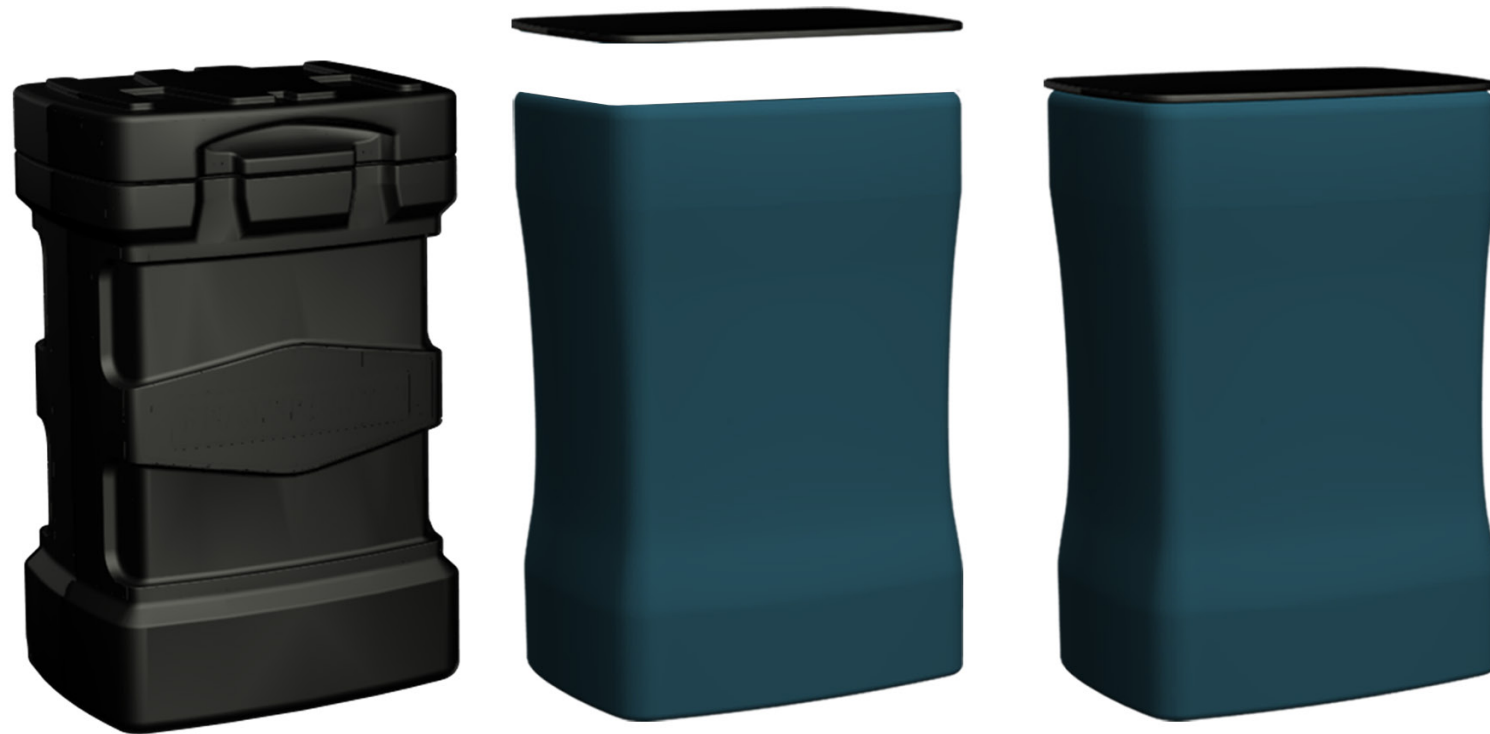


Accent your brand with unique accessories

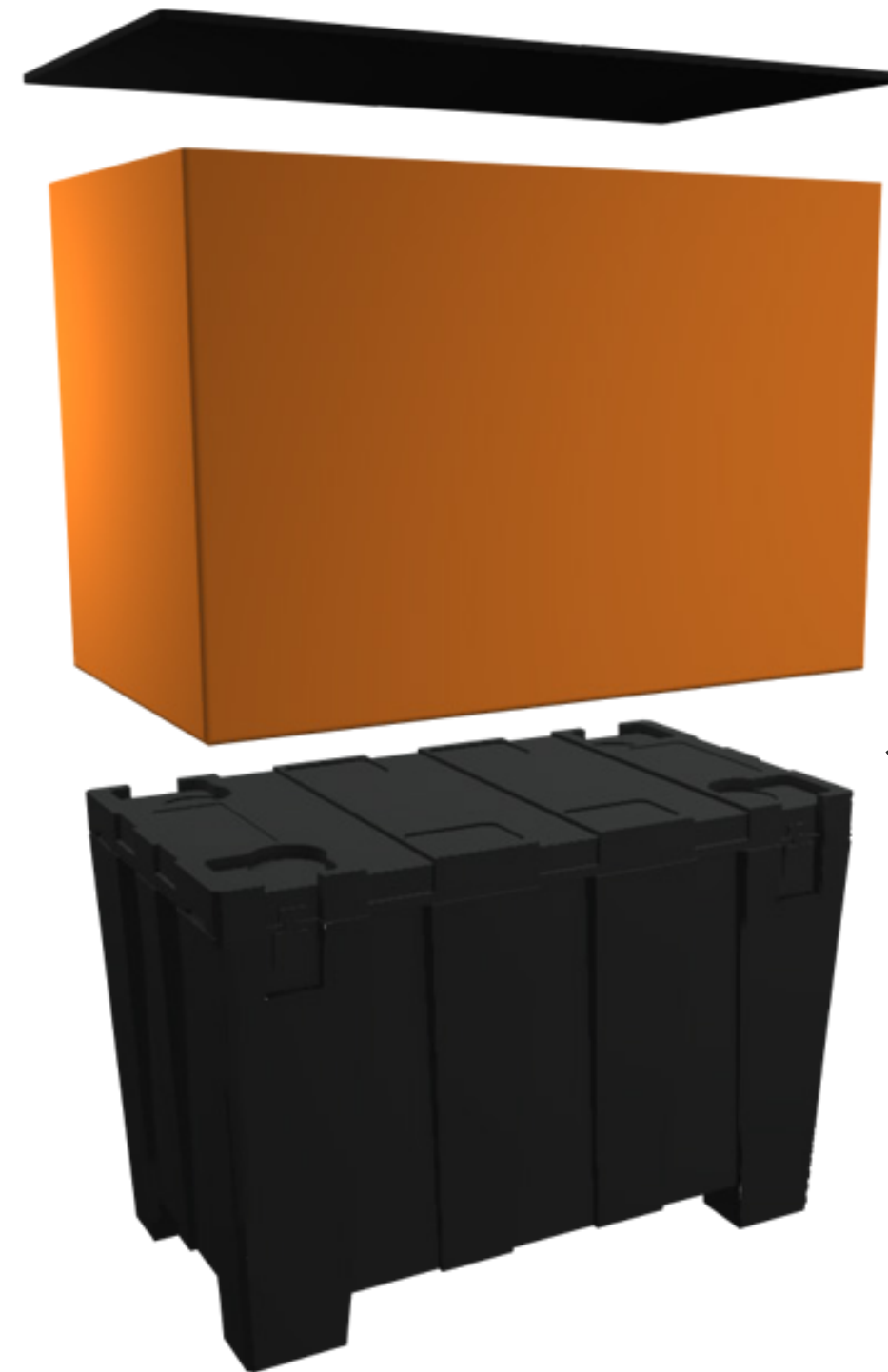
*Multiple counter, kiosk, monitor, and
lighting options*

Versatile Case-to-Counter Options

Cases conveniently stay in booth space



FX1000 UPS SHIPPABLE CASE



*MX2000 LTL
SHIPPING TUB*