



PIN MOUNTED BUCKET THUMBS

STANDARD HYDRAULIC AND PROGRESSIVE LINK HYDRAULIC

When your application requires precise load handling and material placement, a Rockland Pin Mounted Standard or Progressive Link Bucket Thumb is the right tool for the job. Pin mounted thumbs enable an excavator to pick, place, and handle all types of material that can't be handled with a bucket alone.

More Effective Material Placement And Superior Load Control

Rockland Pin Mounted Bucket Thumbs pivot on the stick pin of the excavator and the Progressive Link Hydraulic Thumb will rotate up to 180 degrees *with the bucket*. This means the operator can precisely pick and place material at maximum stick extension *and* securely clamp material when maneuvering the load.

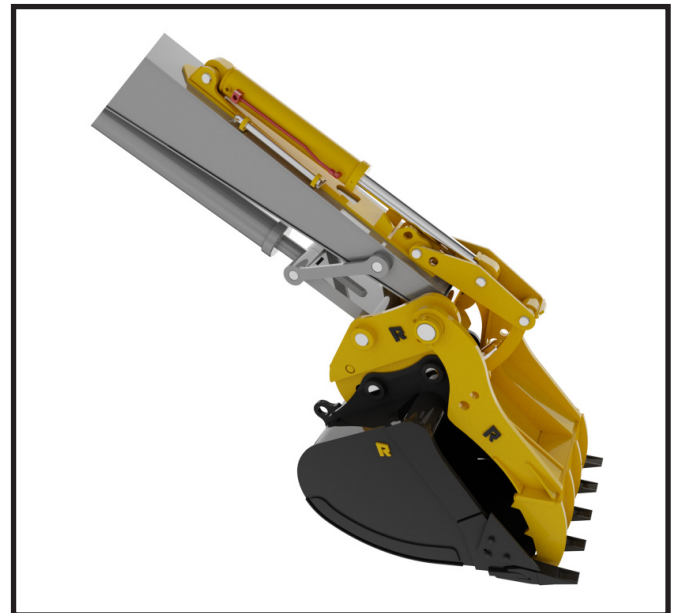
KEY FEATURES

- Up to 120° (pin mounted) or 180° (progressive link) rotation for material handling accuracy.
- Dual cushioned thumb cylinder.
- Cylinder transfer hose keeps jumper hoses shorter and less prone to damage.
- Easily pick and place material at maximum stick extension.
- Securely clamp loads when rotating thumb and bucket.
- No interference with bucket when thumb is not in use.
- Lubricated, replaceable heat-treated pins and bushings.
- Matched to your bucket's teeth.
- Coupler models available.
- High-strength alloy steel construction.
- 1 year, 2,000 hour Rockland warranty.

ACCURATELY HANDLE MATERIAL



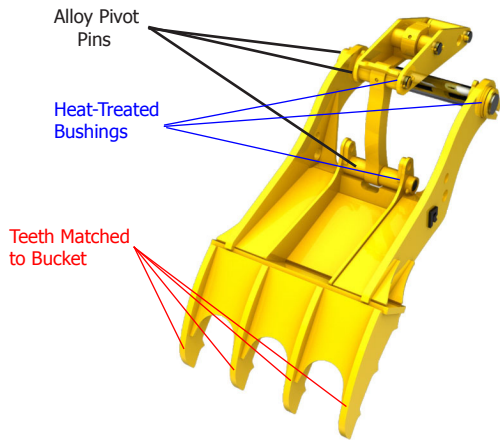
WHP Pin Mounted Hydraulic Thumb



WPL Pin Mounted Progressive Link Thumb

Designed For Your Machine

All Rockland Pin Mounted and Progressive Link Pin Mounted Thumbs are designed specifically to work with your machine and bucket. They feature replaceable, heat-treated bushings and alloy pivot pins at all pivot points, and typically are designed to mesh with the bucket teeth.



Progressive Link Schematic

SPECIFICATIONS

PIN MOUNTED

Excavator Category	AA	A	B1	B2	C	D	E	F
Excavator Weight Class (lbs.)	15,001 - 25,000 <small>4538 - 11343</small>	25,001 - 33,000 <small>11343 - 14973</small>	33,001 - 40,000 <small>14973 - 18149</small>	40,001 - 52,000 <small>18149 - 23594</small>	52,001 - 70,000 <small>23594 - 31760</small>	70,001 - 90,000 <small>31761 - 40835</small>	90,001 - 110,000 <small>40835 - 49909</small>	110,001 - 160,000 <small>49910 - 72595</small>
Standard Length (lbs.)	400 <small>181</small>	845 <small>383</small>	965 <small>438</small>	1375 <small>624</small>	1415 <small>642</small>	1770 <small>803</small>	2050 <small>930</small>	2525 <small>1145</small>
Coupler Length (lbs.)	455 <small>206</small>	900 <small>408</small>	1065 <small>483</small>	1455 <small>660</small>	1610 <small>730</small>	2155 <small>977</small>	2295 <small>1041</small>	2710 <small>1229</small>

(mm/kg)

Specifications subject to change without notice.

PROGRESSIVE LINK PIN MOUNTED

Excavator Category	AA	A	B1	B2	C	D	E	F
Excavator Weight Class (lbs.)	15,001 - 25,000 <small>4538 - 11343</small>	25,001 - 33,000 <small>11343 - 14973</small>	33,001 - 40,000 <small>14973 - 18149</small>	40,001 - 52,000 <small>18149 - 23594</small>	52,001 - 70,000 <small>23594 - 31760</small>	70,001 - 90,000 <small>31761 - 40835</small>	90,001 - 110,000 <small>40835 - 49909</small>	110,001 - 160,000 <small>49910 - 72595</small>
Standard Length (lbs.)	410 <small>186</small>	1010 <small>458</small>	1115 <small>506</small>	1560 <small>708</small>	1795 <small>814</small>	2365 <small>1073</small>	2900 <small>1315</small>	3350 <small>1519</small>
Coupler Length (lbs.)	470 <small>213</small>	1080 <small>490</small>	1220 <small>553</small>	1725 <small>782</small>	1835 <small>832</small>	2480 <small>1125</small>	2975 <small>1349</small>	3470 <small>1574</small>

(mm/kg)

Specifications subject to change without notice.

INSTALLATION INFORMATION

Rockland pin mounted thumbs are supplied with a longer bucket pin. The excavator must be equipped with the plumbing kit and a control valve providing pressure relief in all positions.

WARRANTY

Rockland Pin-Mounted Thumbs are guaranteed against failure due to defective design, materials or workmanship for a period of one year or 2000 hours.



FACTORY AUTHORIZED DISTRIBUTOR:

BOLTZ EQUIPMENT, INC.
 JACKSONVILLE, FLORIDA USA
 TOLL FREE USA/CANADA: +1 (888) 955-9779
 INTERNATIONAL DIRECT: +1 (904) 232-4448
 EMAIL: SALES@BOLTZEQUIPMENT.COM
 WEB: BOLTZEQUIPMENTPARTS.COM