



DOZER SLOPE BOARD

Clear and grade more than ever before!

Rockland Dozer Slope Boards dramatically increase dozer productivity. The Rockland dozer slope boards enable a dozer to move more material per pass and fine grade slopes. This saves time, fuel, and reduces cost.

Sloping work can also be done while the dozer stays on level ground. This reduces machine wear, operator fatigue, and increases safety.

Rockland dozer slope boards quickly lower into position and can be moved to the storage position in seconds.

All Rockland dozer slope boards feature heavy duty cushioned cylinders for years of dependable service and are covered by a one year 2,000 hour no-nonsense warranty.



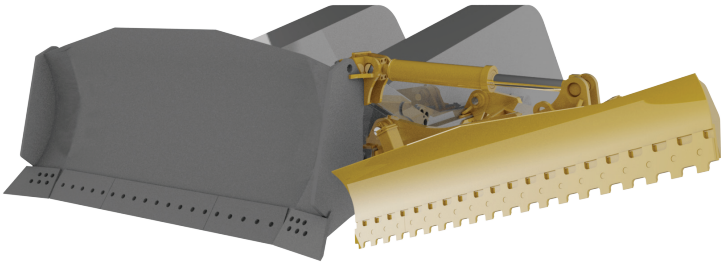
Features & Benefits

- Capable of fine grading with the blade in any position at an angle up to 82 degrees.
- Hydraulic controls allow for full control of grade adjustments without leaving the cab
- The cutting edge being visible from the cab increases safety and minimized grading errors
- Reduces machine wear and maintenance costs because the dozer can stay on level ground
- All parts manufactured from high strength alloy plate
- Available for any dozer with an inside mounted c-frame or push arm setup
- Optional blade extension available

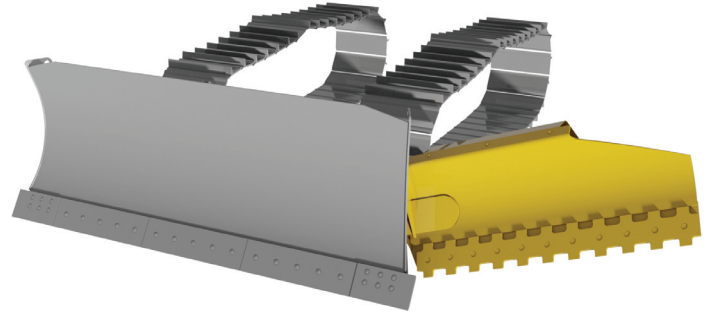


DOZER SLOPE BOARD

Rockland Dozer Slope boards are available for dozers with inside-mounted c-frames or outside-mounted push arms.



Outside Mount Option



Inside Mount Option

Technical Specifications

MACHINE CATEGORY	DOZER HP	PAT BLADE INSIDE MOUNTED C-FRAME	SEMI-U BLADE PUSH ARM SETUP (SINGLE TILT)	BLADE DIMS.	DSB FRAME & BLADE WEIGHT	EXTENSION DIMS.	EXTENSION WEIGHT
20/25	50-99	L.H. MOUNT	N/A	60"W x 26"H	1,375 Lbs	N/A	N/A
20/25	50-99	L.H. MOUNT	N/A	72"W x 26"H	1,450 Lbs	N/A	N/A
30	140-189	L.H. MOUNT	N/A	72"W x 26"H	1,650 Lbs.	N/A	N/A
30	140-189	N/A	L.H. MOUNT	84"W x 24"H	1,800 Lbs.	24"W x 18"H	170 Lbs.
40	190-249	N/A	L.H. MOUNT	84"W x 24"H	2,300 Lbs.	24"W x 18"H	190 Lbs.
50	250-319	N/A	L.H. MOUNT	96"W x 24"H	3,900 Lbs.	24"W x 20"H	240 Lbs.
60	320-389	N/A	L.H. MOUNT	96"W x 26"H	4,200 Lbs.	24"W x 22"H	300 Lbs.
70	390-454	N/A	L.H. MOUNT	96"W x 26"H	4,400 Lbs.	24"W x 22"H	315 Lbs.
80	455-504	N/A	L.H. MOUNT	96"W x 28"H	4,900 Lbs.	24"W x 24"H	370 Lbs.
						48"W x 24"H	680 Lbs.

**Specifications subject to change without notice.*

Increase dozer productivity & decrease maintenance costs while staying safer - all with a Rockland Dozer Slope Board.

 **Proudly Made in USA**

WARRANTY

Rockland Dozer Slope Boards are guaranteed against failure due to defective design, materials or workmanship for a period of two years or 4000 hours.



FACTORY AUTHORIZED DISTRIBUTOR:

BOLTZ EQUIPMENT, INC.
 JACKSONVILLE, FLORIDA USA
 TOLL FREE USA/CANADA: +1 (888) 955-9779
 INTERNATIONAL DIRECT: +1 (904) 232-4448
 EMAIL: SALES@BOLTZEQUIPMENT.COM
 WEB: BOLTZEQUIPMENTPARTS.COM