



**GROUSER<sup>®</sup>  
PRODUCTS**

**ATTACHMENTS**



*Over-The-Tire*  
**TRACK**  
**TRACKS**



**1300 Series**  
**DOZER BLADE**  
by GROUSER PRODUCTS

**BLADE**



**V3**  
**FLEX PLANE**  
**PLANE**



Grouser Products - 755 2nd Ave NW - West Fargo, ND 58078  
1-800-747-6182 • 701-282-7710  
Web: WWW.GROUSER.COM - Email: info@grouser.com

# Over-The-Tire TRACK

## Bar TRACK™

Grouser Products has been improving skid steer productivity for over two decades. Our fundamental track design continues to be the top choice among experienced operators. Get more out of your skid steer with **Grouser Tracks**.

### Features

- 1 Open bar design utilizes the tire to provide maximum traction and flotation
- 2 Contractor grade, heavy duty components
- 3 Large 1-1/4" hardened, field replaceable bushings
- 4 2" wide bars are 30% larger than previous tracks for longer life
- 5 Larger traction bars for improved track-to-tire grip
- 6 Patented open side plate for excellent clean out in the pivot area
- 7 Improved side wall design for today's heavy duty tires
- 8 Built-in length adjustment
- 9 Run loose design
- 10 Self cleaning
- 11 Reduces tire wear in abrasive conditions
- 12 Adds counterweight
- 13 Provides tire protection
- 14 May be installed in 30 minutes or removed in 10 minutes
- 15 Field serviceable
- 16 Rebuildable
- 17 Reduces ground pressure by as much as 50%

### Traction Pick

## Hard TRACK™

## Soft TRACK™

# 1300 Series DOZER BLADE™

by GROUSER PRODUCTS



- Designed for rubber tired and tracked skid steer loaders
- Fully assembled - ready to go!

### Features

Weights between 1400 & 1500 lbs.

- 1 Cast Moldboard - 5/16" thick x 24" high
- 2 Cutting Edge 5/8" x 6" reversible Universal Quick Attach
- 3 Hydraulic angle and tilt control
- 4 Electric valve allows control of angle and tilt using only one loader valve
- 5 Blade angles 30 deg. left and right
- 6 Blade tilts 10 deg.
- 7 Blade widths from 6' (72") to 9' (108")
- 8 Angle cylinders - 4"x8" with 2" rods
- 9 Tilt cylinders - 4"x8" with 2" rods
- 10 Adjustable skid shoes
- 11 Attractive design with exceptionally strong cast components
- 12 Cast design provides a cavity to protect the electric diverter valve
- 13 Cast design provides a cavity to protect the electric diverter valve
- 14 Cast design places the electric diverter valve closer to the cylinders making hose routing neat and efficient
- 15 Cast female quick attach meets SAE specifications
- 16 Full safety step area



## WWW.GROUSER.COM

Grouser Products - 755 2nd Ave NW - West Fargo, ND 58078  
 PH: 1-701-282-7710 / 1-800-747-6182 - Fax: 1-701-282-8131  
 Email: grouser@grouser.com - Web: WWW.GROUSER.COM

# FLEX V3 PLANE

With over two decades of experience manufacturing industrial-grade attachments that improve productivity, Grouser Products is a household name among skid steer owners. The latest example of innovation - the V3 Flex Plane - significantly cuts grading and leveling time, effectively increasing ROI and skyrocketing productivity. The patent pending V3 Flex Plane design, utilizes heavy-duty contractor grade components and materials to ensure maximum durability. With minimal wear components and self-correcting springs, the unit is easy to operate and maintain - even for the inexperienced operator. Grouser Product's V3 Flex Plane truly is in a class all its own and offers the ideal solution for increased productivity, especially on uneven or challenging terrain.

## Features

**1 PIVOTING MECHANISM** self-adjusts the V3 Flex Plane to varying terrains and ground conditions virtually eliminating any restrictions to travel direction. The design enables the V3 Flex Plane to adjust to the contour of the ground - preventing corners from digging in when moving to a different plane.

**2 EXCLUSIVE ACCU-TACH SYSTEM** provides a firm and accurate mounting design and allows the planer to be adjusted to the correct cutting angle for any tracked or wheeled skid loader, thus increasing cutting ability and boosting productivity.

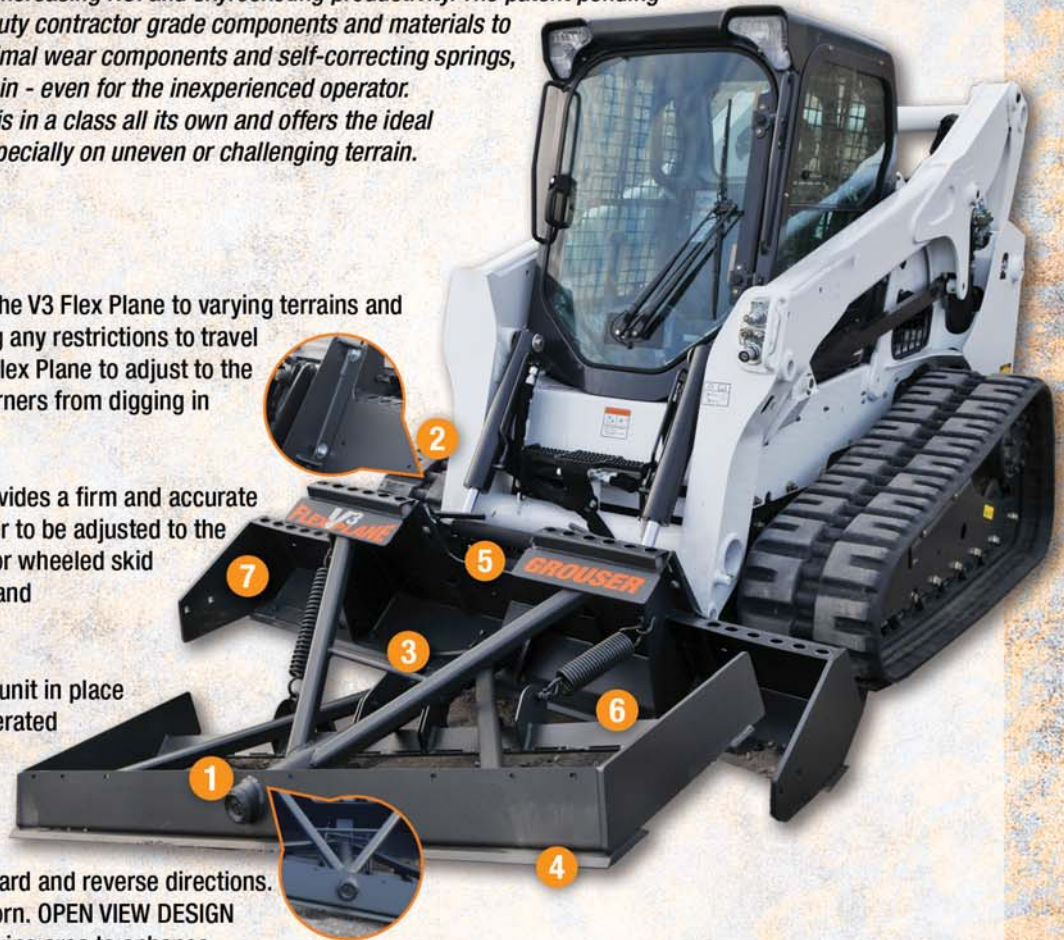
**3 SIMPLE LOCKING SYSTEM** locks the unit in place and allows the V3 Flex Plane to be operated as a standard rigid plane.

**4 TWO DOUBLE-BEVELED HARDENED STEEL CUTTING EDGES** deliver aggressive cutting action in both forward and reverse directions. Edges are easily replaceable when worn. **OPEN VIEW DESIGN** allows a clear view of the critical working area to enhance productivity and eliminate errors.

**5 OPEN VIEW DESIGN** allows a clear view of the critical working area to enhance productivity and eliminate errors.

**6 CROSS CRUMBLER BEAM** pulverizes clumps and clods of dirt for a smooth finished surface.

**7 LARGE REAR SIDE PLATES** offer enhanced material moving capabilities.



## specifications

Model	Length (A)	Width (B)	Height (C)	Weight
15290-72	54.25 in.	72 in.	22.75 in.	759 lbs.
15290-78	54.25 in.	78 in.	22.75 in.	790 lbs.
15290-84	54.25 in.	84 in.	22.75 in.	819 lbs.
15290-90	54.25 in.	90 in.	22.75 in.	850 lbs.
15290-96	54.25 in.	96 in.	22.75 in.	879 lbs.

