

ITEM# _____

PROJECT _____

DATE _____

Thermal Server Coffee Brewer

Features



Thermal Server Coffee Brewer

- Brews 3.8 gallons (14.4 litres) of perfect coffee per hour.
- Brewer measures only 9" (22.9 cm) wide.
- Convenient thermal servers keep coffee hot and fresh for hours.
- Thermal servers are easily transported to remote meeting rooms, breakfast bars, etc.
- Pourover feature included on automatic models.
- Internal components are constructed from stainless steel.
- Hot water faucet available.
- SplashGard® funnel deflects hot liquids away from the hand.
- Holds up to 4" (10.2 cm) cup.
- For information of additional international models, please contact the International division at international@bunn.com.

Model CWTF TS*
with Thermal Server
(Thermal Server sold separately)
 Dimensions: 27.6" H x 9" W x 18.5" D
 (70.1cm H x 22.9cm W x 47cm D)

For current specification sheets and other information, go to www.bunn.com.

* International models may vary in appearance.

Related Products

Easy Clear® EQ-17-TL
 Product No. : 30200.1000
 Dimensions:
 12⁷/₁₆" H x 2¹/₂" W x 3" D
 31.6 cm H x 6.35 cm W x 7.62 cm D



Easy Clear® ED-17-TL
 Product No. : 30201.1001
 Dimensions:
 8¹/₄" H x 2⁵/₁₆" Dia.
 20.95 cm H x 5.87 cm Dia.

230V Power Cord
 Product No.: 27728.0001

Paper Filter Pack
 Product No. : 20115.0000
 Packed per case: 1,000
 Dimensions:
 4¹/₄" Base x 2³/₄" Sidewall
 10.8 cm Base x 6.98 cm Sidewall



Thermal Server Booster*
 Product No. : 18010.6000
 Capacity: 1 Thermal Server
 Shipping Weight: 2 lbs. (.9 kg)
 Dimensions: 6" H x 9¹/₄" W x 8¹/₄" D
 15.2 cm H x 23.5 cm W x 21 cm D



Thermal Server-Black
 Product No. : 23300.0007
 Capacity: 84 oz. (2.5 L)

Power Cord: 27728.0001



*To be used in conjunction with Thermal Server without base. Product No. : 23300.0010 & 23300.0006

Model

Agency Listing

CWTF-A-TS



Patents Apply

5/05

A3.10

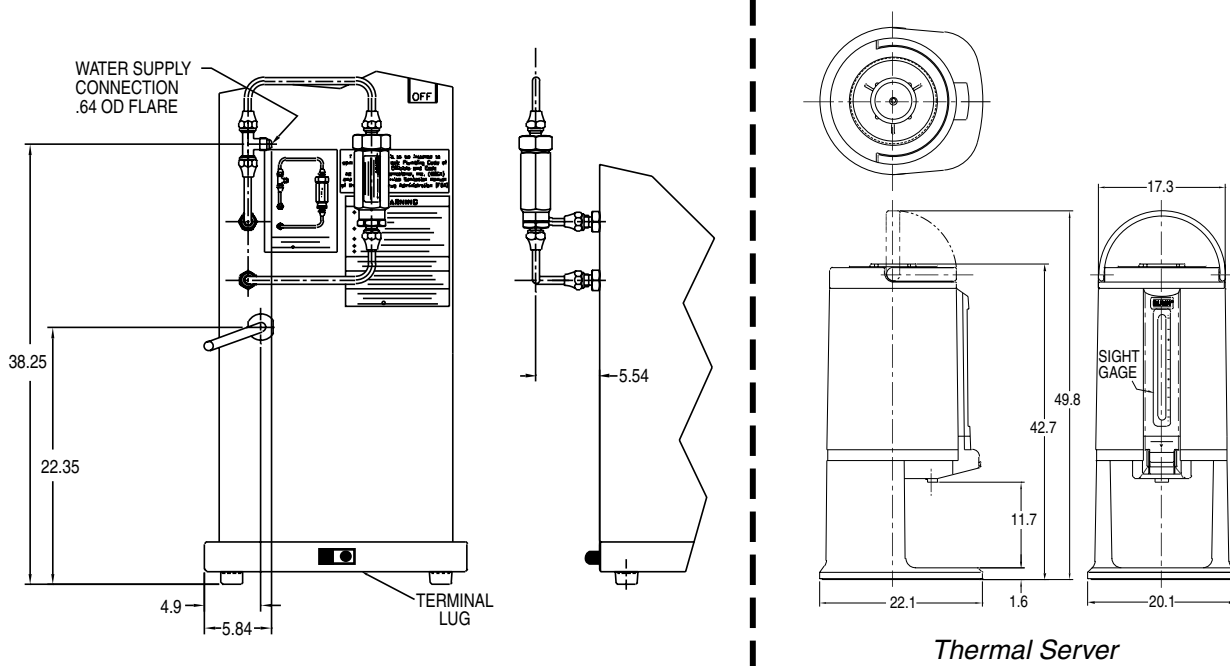
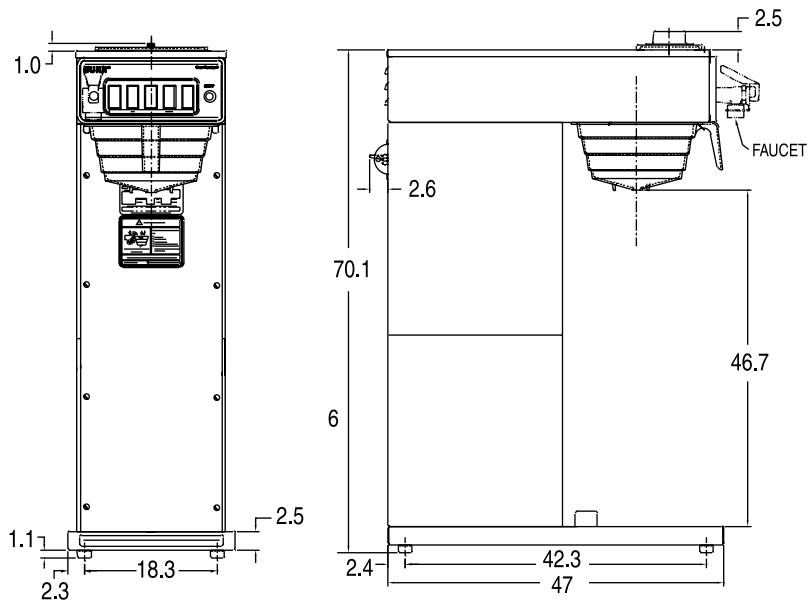
Dimensions & Specifications

Model	Product #	Volts	Amps	Tank Heater Watts	Total Watts	Brewing Capacity	Cu. Ft.	Shipping Weight	Cord Attached
CWTFA-TS	23000.0023	230	9	2000	2080	3.8 gal./hr. (14.76 L./hr.)	7.3 (.21 m ³)	32 lbs. (14.6 kg)	No
CWTFA35-TS	23000.0019	230	14.2	3200	3280	6.9 gal./hr. (26.12 L./hr.)	7.3 (.21 m ³)	32 lbs. (14.6 kg)	No

Brewing capacity: base on incoming water temp of 60°F/15°C (140°F/60°C rise) per 1/2 gallon.

Electrical: Model requires 2-wires plus ground service rated 220-240V, single phase, 50/60 hz.

Plumbing: 20-90 psi (69-621 kPa). Supplied with 1/4" (6.4 mm) male flare fitting.



Thermal Server

BUNN Corporation - 1400 Stevenson Drive Springfield, Illinois 62703 • USA • +1-217-529-6601 • Fax +1-217-529-2827 • www.bunn.com

BUNN® practices continuous product research and improvement. We reserve the right to change specifications and product design without notice. Such revisions do not entitle the buyer to corresponding changes, improvements, additions or replacements for previously purchased equipment.

All dimensions shown in centimeters. Bunn Corporation owns all copyrights relating to materials in this publication. Please contact Bunn Corporation to request permission to reproduce any portion of this publication.