

ITEM# \_\_\_\_\_

PROJECT \_\_\_\_\_

DATE \_\_\_\_\_

## iMIX® Silver Series® Hot Beverage System with 5 Hoppers

### Features



#### iMIX-5S+

Dimensions: 32.8" H x 19.3" W x 24" D  
(83.2cm H x 49.02cm W x 61cm D)

#### iMIX Silver Series Hot Beverage System

- Five Hoppers
- Hopper Capacity 8lb (3.6kg) each
- Lighted Display
- Iced Cappuccino display available
- 7gal (26.5L) hot water tank to meet peak serving times
- Alphanumeric display allows adjustments and service operational testing from front of machine. Also communicates advertising messages, machine status and technical support contact information
- Can be set as push and hold or single size portion control
- Capacity: Five 8lb (3.6kg) hoppers
- Cup clearance at 7.25" (18.4cm) to accommodate popular cup sizes [adjustable to 8.12" (20.6cm)]
- Easily removable side panels for complete access to service components
- Front of machine access to tank drain, dump valves, auger and whipper motors and control board for easy service set up and calibration
- High speed heavy-duty whipper for complete product mixing
- NEW! High efficiency LED lighted front graphics for merchandising
- Spring-loaded, all metal auger drive system for easy hopper installation
- Variable speed motors allow control of product consistency in mixing chamber (.75 to 6.6 grams of powder per second)

For current specification sheets and other information, go to [www.bunn.com](http://www.bunn.com).

### Related Products

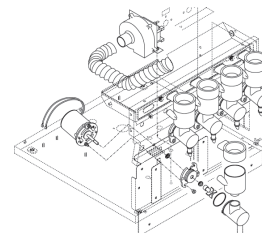
Easy Clear® EQHP-10  
Product No. : 39000.0004



Easy Clear® EQHP-10L  
Product No. : 39000.0001

#### Features deluxe whipper chambers:

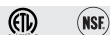
1. Robust whipper to ensure full flavor yield.
2. Specially designed self cleaning mixing chamber.
3. Exhaust fan to siphon off moisture that can cause powder buildup.
4. Hot water dispense for easy clean-out.
5. Quick disconnecting parts for thorough sanitizing.



#### Model

iMIX-5S+

#### Agency Listing



# Dimensions & Specifications



Model	Product #	Volts	Amps	Watts	Capacity per hour	Cubic ft <sup>3</sup> / m <sup>3</sup>	Shipping lbs / kg	Cord Attached
iMIX-5S+	38100.6330	120	12.5	1400	3.9 gal / 14.78 L	16.37 / .46	135 / 61.23	Yes*
iMIX-5S+	38100.6010	120	12.5	1400	3.9 gal / 14.78 L	16.37 / .46	135 / 61.23	Yes*

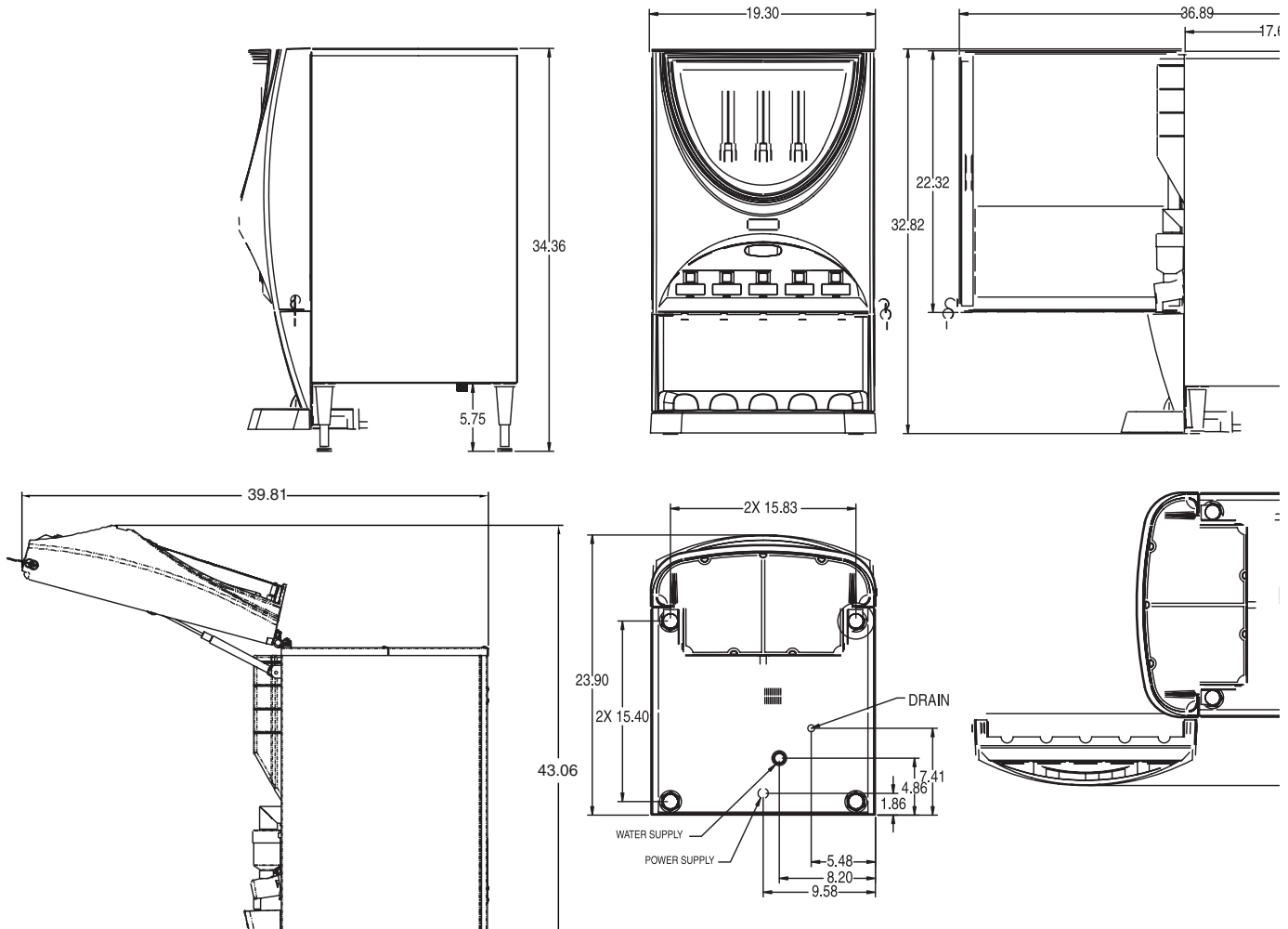
(Iced Coffee display)

\*Power cord (NEMA 5-15P) 15 Amp-120V machine only.

Burst Capacity: 68 - 12 oz. servings in 37 minutes. (to -10°F (-23.3°C) peak serving temperature)

Electrical: 120V model requires 2-wires plus ground service rated 120V, single phase, 60 Hz.

Plumbing: 20-100 psi (138-690 kPa) from a 1/4" or larger supply line. A shut-off valve should be installed in the line before the unit. Install a regulator in line when pressure is greater than 90 psi to reduce it to 50 psi. Supplied with 1/4" male flare fitting.



Bunn-O-Matic Corporation of Canada - 280 Industrial Pkwy. S. Aurora, Ontario L4G 3T9 • 905-841-2866 • Fax 905-841-2775 • www.bunn.com

BUNN® practices continuous product research and improvement. We reserve the right to change specifications and product design without notice. Such revisions do not entitle the buyer to corresponding changes, improvements, additions or replacements for previously purchased equipment.

All dimensions shown in inches. Bunn Corporation owns all copyrights relating to materials in this publication. Please contact Bunn Corporation to request permission to reproduce any portion of this publication.