

# BUNN®

## AXIOM 0/6 TWIN (6 Lower Warmers)

Medium volume brewing solution with simple switch controls

30.3 in x 20.5 in x 21.4 in

Capacity (Servings/Hour): 240  
(8 ounces servings)



- Cold brew lock-out and automatic warmer time-out ensure high quality, fresh tasting coffee
- Electronic diagnostics and built-in tank drain make service easier
- Front of machine programming simplifies installation
- For high lime areas, BrewLOGIC® technology calculates flow rate and adjusts brew time to maintain consistent pot levels
- All stainless steel construction
- Coffee extraction controlled with pre-infusion and pulse brew, digital temperature control, and large sprayhead; coffee strength controlled with variable by-pass.
- Energy-saver mode reduces tank temperature during idle periods
- Ensures coffee brew quality with cold brew lock out capability
- Hot water faucet
- Six individually controlled warming stations
- SplashGard® funnel deflects hot liquids away from the hand
- Twin brew head system

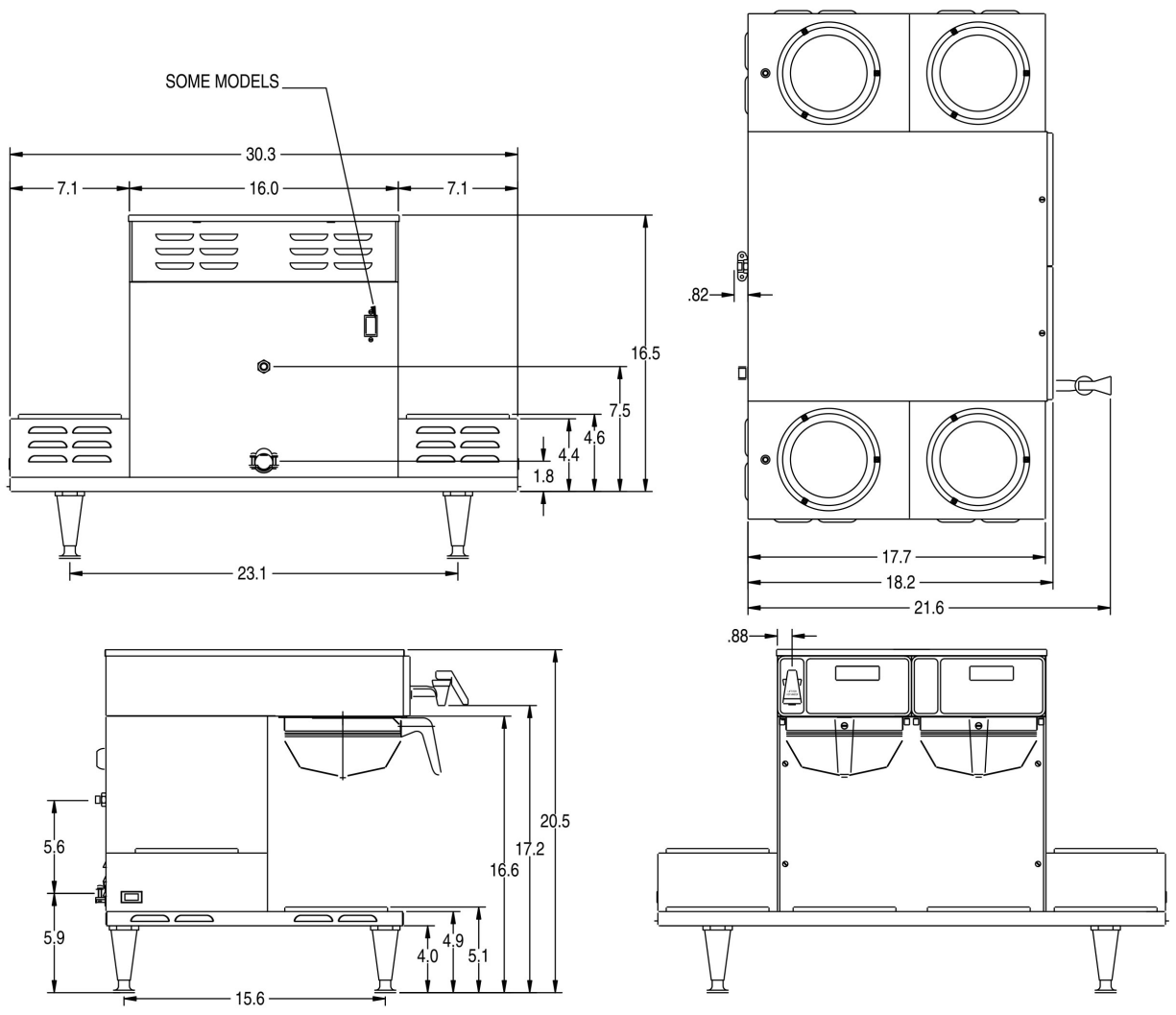
### Related products

- 20115.0000 Regular Paper Filters 1000/case
- 20157.0001 Gourmet C Funnel Paper Filters 1000/cs
- 20217.0000 Funnel
- 39000.0001 WATER FILTER, EQHP-10L
- 39000.0004 WATER FILTER, EQHP-10
- 39000.0010 WATER FILTER, SCALE-PRO



Product No	Channel	Product Category	Water Access	Electrical (Voltage)
38700.0015	Amusement and Leisure College and University Convenience Store Full Service Healthcare Lodging and Hospitality Quick Serve Restaurant	Coffee Brewer	Plumbed	120/208-240
UPC	Coffee Server Type	Coffee Capacity Range	Brewer Type	Number of Warmers
72504083681	Decanter	Medium	Automatics	Six Lower
Finish	Funnel Locks	Number of Wires (+GND)	Cord Attached	BrewLOGIC
Stainless	No	3	No	Yes

2D Format CAD Available	Minimum Input Pressure	Maximum Input Pressure	Inlet Water Fitting	Legs
Yes	20 PSI	90 PSI	3/8" Male Flare Fitting	4" Black Legs
Digital Brewer Control	Faucet Location	Funnel Type	Machine Depth	Machine Width
Yes	Upper	Stainless Steel	21.4 in	30.3 in
Machine Height	Shipping Box Length	Shipping Box Width	Shipping Box Height	Shipping Weight
20.5 in	32.9 in	24.9 in	22.8 in	74 lb
Volume of shipped box				
10.81 ft3				



**Electric & Capacity**

Electrical Configuration Option  
Volts-Factory Wired:120/208-240  
Phase-Factory Wired: 1  
Watts-Factory Wired: 6700  
Hertz-Factory Wired: 60  
Amps-Factory Wired: 27.9  
Capacity (Servings/Hour):240

*To see illustrated parts manuals, visit [bunn.com/support/manuals](http://bunn.com/support/manuals)*

BUNN® reserves the right to change specifications and product design without notice. Such revisions do not entitle the buyer to corresponding changes, improvements, additions, or replacements for previously purchased equipment. For most current specifications and other info visit [bunn.com](http://bunn.com). All dimensions shown in inches.