

Dual-Voltage Airpot Coffee Brewer

ITEM#

PROJECT

DATE



Model CWTF APS-DV with Airpot

(airpot sold separately)

Dimensions: 23.6" H x 9" W x 18.5" D
(59.9cm H x 22.9cm W x 47cm D)

Features

Dual-Voltage Airpot Coffee Brewer

- Easily convertible by flipping a switch to:
 - 120 volt, 15 amp
 - 120/208 volt, 20 amp
 - 120/240 volt, 20 amp
- Brews 3.8 to 7.5 gallons (14.4 to 28.4 liters) of perfect coffee per hour.
- Convenient airpots keep coffee hot and fresh for hours.
- Airpots are easily transported to remote meeting rooms, breakfast bars, etc.
- Brews directly into 1.9 to 3 liter airpots.
- All stainless steel construction.
- Hot water faucet and pourover feature.
- SplashGard® funnel deflects hot liquids away from the hand.

For current specification sheets and other information, go to www.bunn.com.

Related Products

Easy Clear® EQ-17-TL

Product No. : 30200.1000

Dimensions:

12⁷/₁₆" H x 2¹/₂" W x 3" D
31.6 cm H x 6.35 cm W x 7.62 cm D



Easy Clear® ED-17-TL

Product No. : 30201.1001

Dimensions: 8¹/₄" H x 2⁵/₁₆" Dia.

20.95 cm H x 5.87 cm Dia.

Paper Filter Pack

Product No. : 20115.0000

Packed per case: 1,000

Dimensions: 4¹/₄" Base x 2³/₄" Sidewall
10.8 cm Base x 6.98 cm Sidewall



2.2 liter Push-Button Airpot

Product No. : 28696.0002

Capacity: 74 oz. (2.19 L)



2.5 liter Push-Button Airpot

Product No. : 13041.0001

Capacity: 84 oz. (2.48 L)

2.5 liter Lever-Action Airpot

Product No. : 32125.0000

Capacity: 84 oz. (2.48 L)



3.0 liter Lever-Action Airpot

Product No. : 32130.0000

Capacity: 102 oz. (3.0 L)

Universal Airpot Racks

for push-button and lever-action airpots.

See page A3.9 for more information.



Gourmet C Funnel

Product No.: 34559.0000 (7.12 inch width)

34559.0001 (7.62 inch width)

- Universal design – handle may be moved to appropriate side
- Allows brewing with heavier throw weights of coffee.
- Paper Filter Pack
Product No. : 20100.0000
Packed per case: 1,000



Model	Agency Listing	International Model	Agency Listing
CWTF APS-DV	UL NSF	No International Model	

Dimensions & Specifications

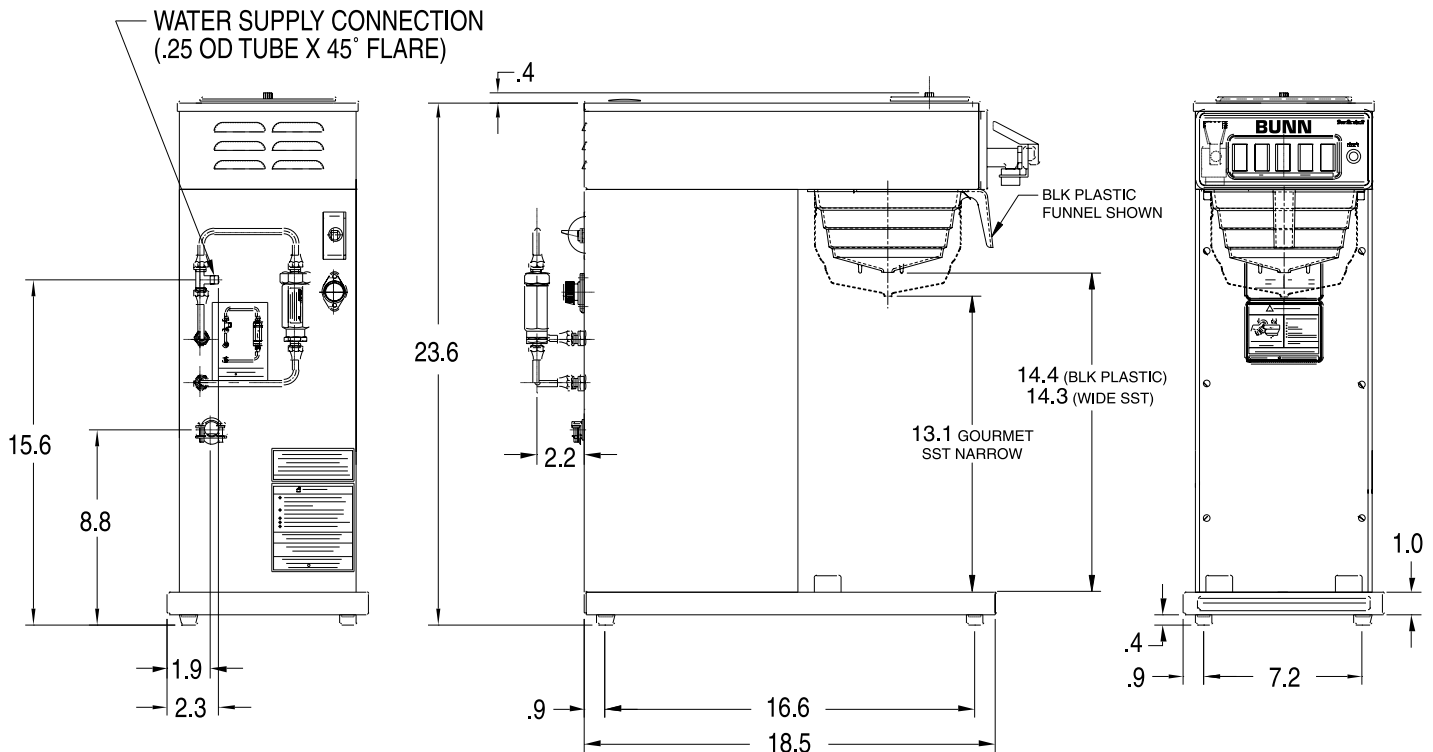
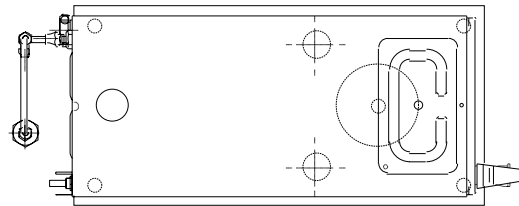
Model	Product #	Volts	Amps	Tank Heater Watts	Total Watts	Brewing Capacity	Cu. Ft.	Shipping Weight	Cord Attached
CWTF APS-DV	23001.0058	120	11.4	1320	1370	3.8 gal./hr.	5.2	36 lbs. (16.3 kg)	No
		120/208	11.4	2288	2340	6.5 gal./hr.	6.3	44 lbs. (20 kg)	No
		120/240	13.1	3046	3100	7.5 gal./hr.	6.3	44 lbs. (20 kg)	No
CWTF APS-DV*	23001.0059	120	11.4	1320	1370	3.8 gal./hr.	5.2	36.8 lbs. (16.7 kg)	No
		120/208	11.4	2288	2340	6.5 gal./hr.	6.3	44 lbs. (20 kg)	No
		120/240	13.1	3046	3100	7.5 gal./hr.	6.3	44 lbs. (20 kg)	No

*Plastic and stainless funnel

Brewing capacity: based upon incoming water temp of 60°F (140°F rise) per 1/2 gallon brew time of 4 minutes.

Electrical: If wired for 120V, requires 2-wires plus ground service rated 120V, single phase, 60 Hz.
If wired for 120/208V or 120/240V, requires 3-wires plus ground service rated 120/208V or 120/240V, single phase, 60 Hz.

Plumbing: 20-90 psi (138-621 kPa). Supplied with 1/4" male flare fitting.



BUNN Corporation - 1400 Stevenson Drive Springfield, Illinois 62703 • 800-637-8606 • 217-529-6601 • Fax 217-529-6644 • www.bunn.com

BUNN® practices continuous product research and improvement. We reserve the right to change specifications and product design without notice. Such revisions do not entitle the buyer to corresponding changes, improvements, additions or replacements for previously purchased equipment.

All dimensions shown in inches. Bunn Corporation owns all copyrights relating to materials in this publication. Please contact Bunn Corporation to request permission to reproduce any portion of this publication.