

Stitch Guide cont

Cable and Lace Pattern: (begins as multiple of 23 sts + 8; st count changes on Rows 1 and 7)

Row 1 (RS): K1,, p1, k4, p1, *k1, yo, k1, ssk, p1, k2tog, k1, p1, k1, ssk, p1, k2tog, k1, yo, k1, p1, k4, p1; rep from * to last st, k1 — multiple of 21 sts + 8.

Row 2: P1, *[k1, p4] 2 times, [k1, p2] twice, k1, p4; rep from * to last 7 sts, k1, p4, k1, p1.

Row 3: K1, p1, sl 2 to cn and hold in back, k2; k2 from cn, p1, *[k1, yo] 2 times, ssk, p1, k2tog, p1, ssk, p1, k2tog, [yo, k1] twice, p1, sl 2 to cn and hold in back, k2; k2 from cn, p1; rep from * to last st, k1.

Row 4: P1, *k1, p4, k1, p5, [k1, p1] 2 times, k1, p5; rep from * to last 7 sts, k1, p4, k1, p1.

Row 5: K1, p1, sl 2 to cn and hold in back, k2; k2 from cn, p1, *k1, yo, k3, yo, sk2p (see Glossary), p1, k3tog, yo, k3, yo, k1, p1, sl 2 to cn and hold in back, k2; k2 from cn, p1; rep from * to last st, k1.

Row 6: P1, *k1, p4, k1, p7, k1, p7; rep from * to last 7 sts, k1, p4, k1, p1.

Row 7: K1, p1, k4, p1, *k1, yo, k5, yo, sk2p, yo, k5, yo, k1, p1, k4, p1; rep from * to last st, k1 — multiple of 23 sts + 8.

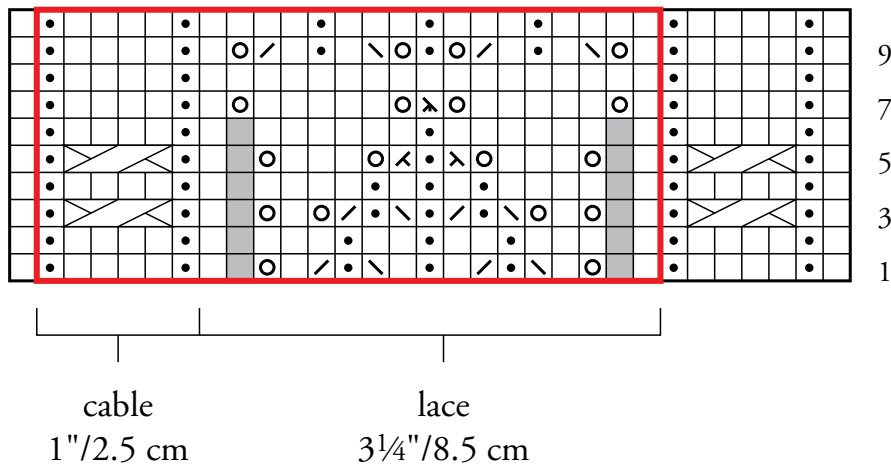
Row 8: P1, *k1, p4, k1, p17; rep from * to last 7 sts, k1, p4, k1, p1.

Row 9: K1, p1, k4, p1, *k1, yo, ssk, k1, p1, k1, k2tog, yo, p1, yo, ssk, k1, p1, k1, k2tog, yo, k1, p1, k4, p1; rep from * to last st, k1.

Row 10: P1, *[k1, p4] 2 times, [k1, p3] 2 times, k1, p4; rep from * to last 7 sts, k1, p4, k1, p1.

Rep Rows 1–10 for patt.

Cable and Lace Chart



- knit on RS, purl on WS
- purl on RS, knit on WS
- yo
- ssk
- k2tog

- ssk
- k3tog
- sk2p
- no stitch
- sl 2 to cn, hold in back, k2; k2 from cn