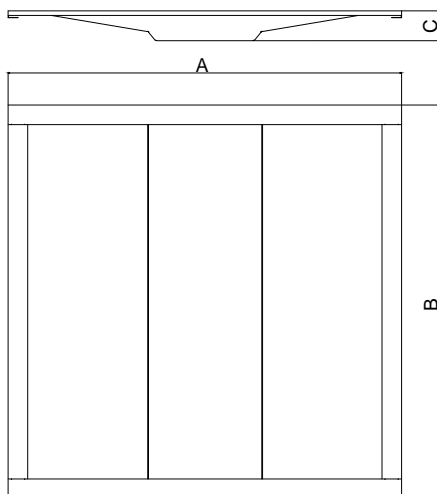
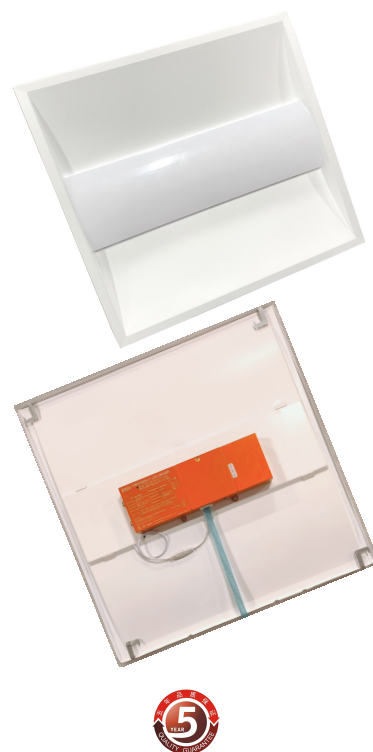


SPECIFICATION

LED TROFFER FIXTURE(New Construction)



Maximum overall	A	B	C
2*2ft	603mm	603mm	45mm
2*4ft	603mm	1213mm	45mm



FEATURES

Input voltage: AC100-277V

Operating frequency: 50/60Hz

Power factor: > 0.95

Ambient temperature range: -20°C ~+45°C

Color Temp: 3000K/4000K/5000K

Dimmable: 0-10V dimming

THD: ≤10%

IP Rating: IP40

CRI: >Ra80

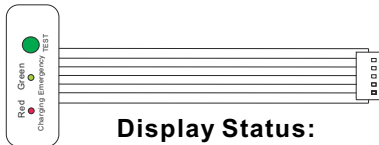
Beam angle: 120°

- Cloud series led troffer gives >130lm/W
- Selectable emergency power 10W by 2x2ft, and 10W by 2x4ft
- Standby for 90 minutes
- 5 years' warranty

PARAMETER

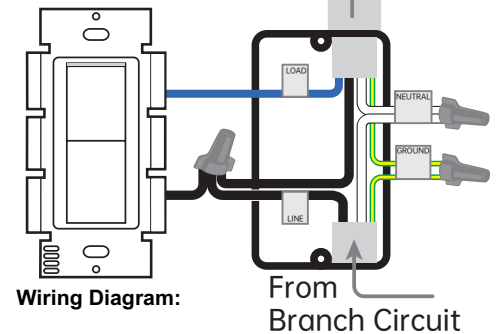
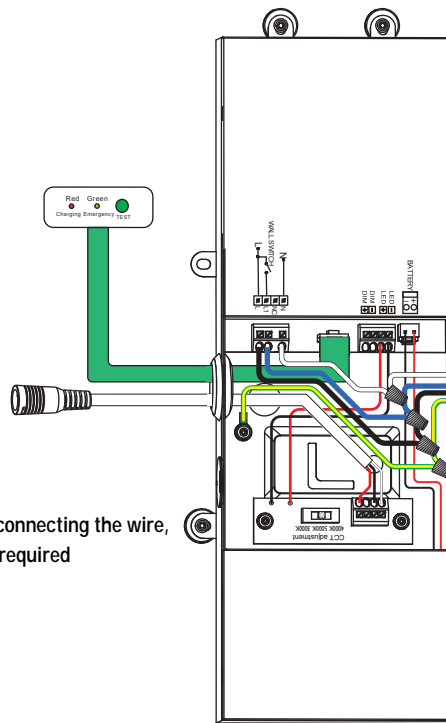
Description						
Length	Product code	CRI	Wattage	Function	Lumens 3000/4000/5000K	Packing/carton
2x2ft	ZS-TF2*2-Q01-K40-3050	>80	40W	dimming(0-10V) CCT Tunable	5200 LM	750*130*650mm 2 pieces 1*40HQ Loading=2280pcs
2x4ft	ZS-TF2*4-Q01-K60-3050	>80	50W	dimming(0-10V) CCT Tunable	6500 LM	1360*130*650mm 2 pieces 1*40HQ Loading=1230pcs

WIRING DIAGRAM



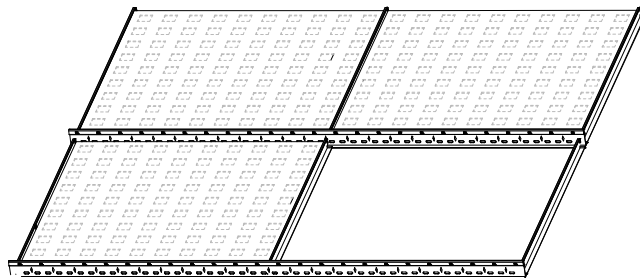
Electric Shock Attention

Ensure the power supply has been cut off before connecting the wire, and all wiring and installation of this product are required to be operated by professionals.

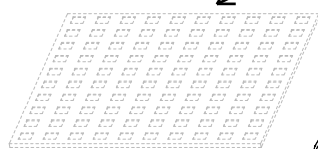


INSTALLATION INSTRUCTION

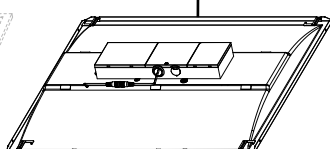
Step1



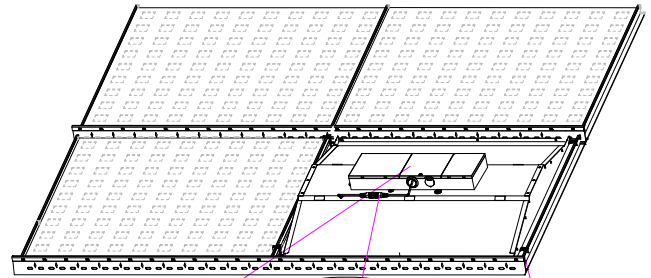
Step1-1



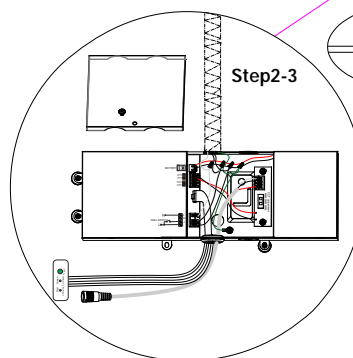
Step1-2



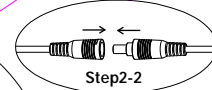
Step2



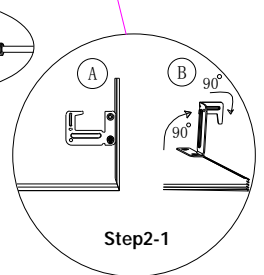
Step2-3



Step2-2



Step2-1



Step 1: Make sure of all the power is off before installing. Remove the one ceiling tile that you need to install light fixture on. Then place the light fixture on the T-bar carefully and make sure it is correctly in place and secure.

Step 2: Lift the 4 buckles on the back of the panel up by 90° then bend the top part of the buckles 90° towards the direction where you can anchor the light fixture to the T-bar.

Step 3: Open the driver's junction box and connect the AC wire to the driver correctly (L=black & N=white)

Warning:

Ensure the power supply has been cut off before connecting the wire, and all wiring and installation of this product are required to be operated by professionals.