



HOW TO CREATE A PRINT-READY FILE - SYNTHETIC FABRICS AND FLAGS

The following instructions are designed to help you create a print-ready file. If after reading them you are still unsure about anything, please download the template, visit the FAQ section of our website, request a professional File Check or contact customer support.

1 FILE FORMAT

Send your file in PDF **format (not password protected)**.

2 FILE ORIENTATION

The orientation of the file must match the choice made when filling in the order form (landscape or portrait). This is important to ensure accessories such as pole pockets, eyelets etc. are positioned correctly.

3 COLOURS

All files should be sent in **CMYK** (cyan, magenta, yellow, black) format with the **Fogra 39 colour profile**.

Images in RGB or with PANTONE colours will be converted automatically using a standard colour separation profile.

The same colour may vary slightly in appearance depending on the media onto which it is printed, as a result of the material's physical composition. For example, natural fabrics absorb much more ink than synthetic fabrics.

4 RESOLUTION

The optimal resolution for the print files is **between 100 and 150 ppi**.

5 TEMPLATE

Download the template for your chosen product from the website and use it as the basis for your work: **you will find the dimensions you gave when ordering, the bleed, other accessories** (pole pockets, reinforced stitching etc.) and other guidelines already correctly set up.

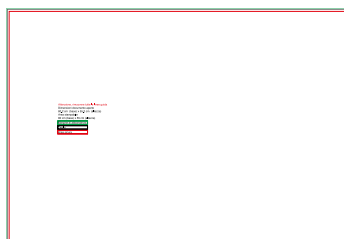
Insert your artwork, **delete all guidelines** and save the file as a high-quality PDF without crop marks.

6 BLEED AND SAFE AREA

Download the template for the product you have purchased; **the bleed of 0.1 cm on each side** will already be set up correctly.

Leave a 0.5 cm gap between text and the cut line, or a 5 cm gap if you have chosen to add **eyelets**.

GOOD TO KNOW - Synthetic fabrics and flags



DOWNLOAD THE
TEMPLATE



INSERT YOUR
ARTWORK



DELETE ALL
GUIDELINES



SAVE
THE PDF



PDF



100-150 ppi



CMYK



FOGRA 39

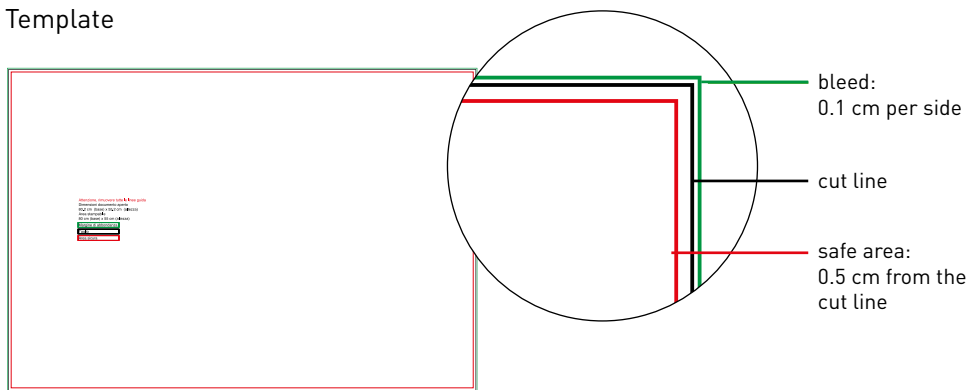


0,1 cm bleed



printer's marks

Template



E.g.:

Banner dimensions selected when ordering: 50x100 cm → send us a file with dimensions of 50.2x100.2 cm

7 TILING

Tiling is not available for this product type.

8 UNTRIMMED

If you have opted for the "untrimmed" cutting method, remember that the product you receive will have unprinted edges beyond the fabric dimensions ordered (because it has not been trimmed).

9 ADDITIONAL INFORMATION

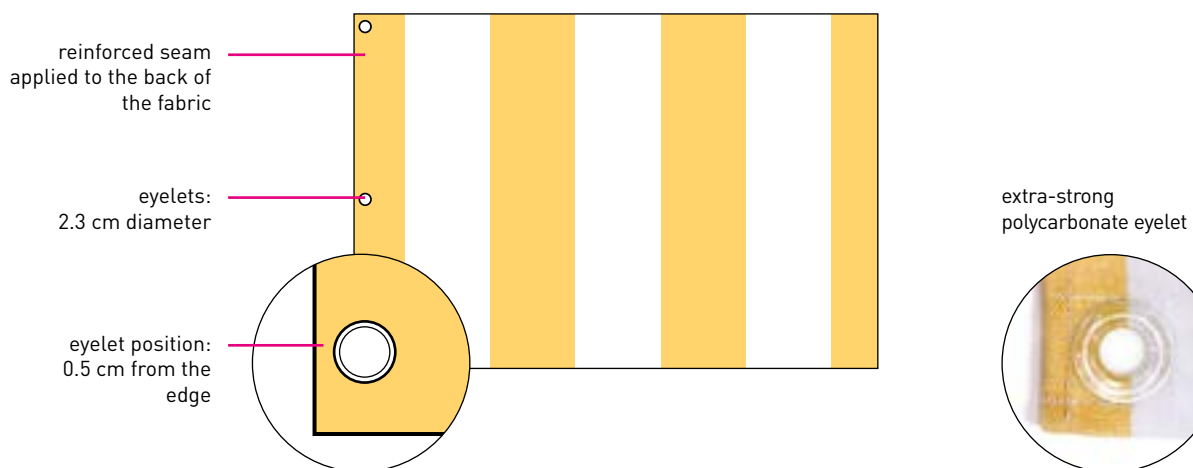
The minimum printable line weight is 0.5 pt. This product can **only be printed on one side**.

The ink coverage on synthetic fabrics varies depending on the weight and weave of your chosen material: order the **Advertising Banner Sample Pack** to compare the characteristics of the different materials.

10 ACCESSORIES

Accessories like **eyelets, pullbacks or hooks** are applied above the **reinforced seam**, a 2.7 mm-wide strip of non-printed fabric that is sewn along the edge of the product, on the back, to improve its strength.

The **eyelets** are 2.3 cm in diameter and are positioned 0.5 cm from the edge.



IF YOU HAVE CHOSEN NON-WOVEN FABRIC

Reinforced stitching, pole pockets and reinforced seams are not available for this product, and accessories like pullbacks and hooks cannot be added (only eyelets are available).



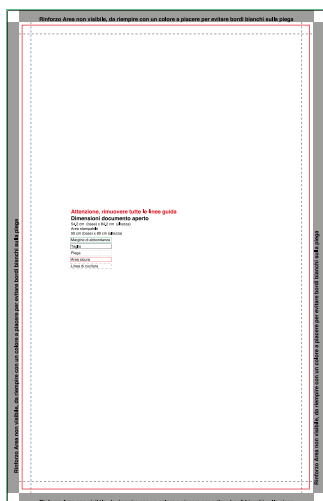
IF YOU HAVE CHOSEN ONE OF THE FOLLOWING FABRICS: ELASTIC FABRIC, 100% POLYESTER FABRIC, WINDPROOF OUTDOOR FABRIC, DELUXE INDOOR FABRIC

You will find all the guidelines relating to any accessories such as pole pockets and reinforced stitching already set up in the template. Here are the specific details:

Reinforced stitching: An extra 2 cm on each side with the stitching. Fill this space with a colour of your choice, to avoid white strips being visible.

Pole Pocket: An extra 5 cm on each side with a pocket. Fill this space with a colour of your choice, to avoid white strips being visible.

Reinforced stitching

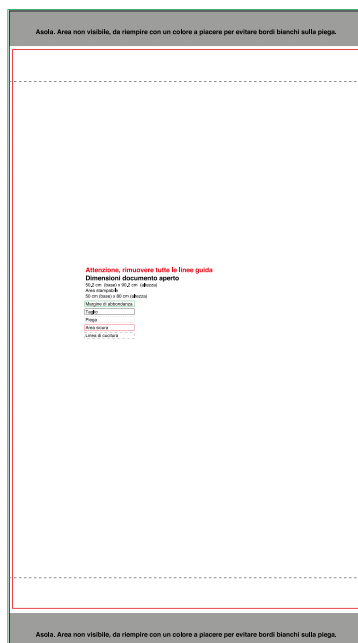


in this example:
reinforced stitching on all sides

ordered dimensions:
50x80 cm

file dimensions:
width= 54.2 cm → 50+2+2
(reinforced stitching)+0.1+0.1 (bleed)
height= 84.2 cm → 80+2+2
(reinforced stitching)+0.1+0.1 (bleed)

Pole pocket

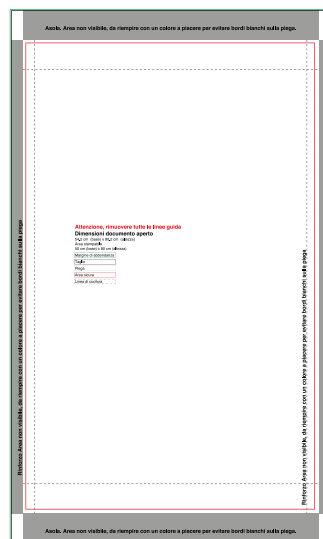


in this example:
pole pocket on top and bottom edge

ordered dimensions:
50x80 cm

file dimensions:
width= 50.2 cm
→ 50+0.1+0.1 (bleed)
height= 90.2 cm
→ 80+5+5 (pole pocket) +0.1+0.1 (bleed)

Pole pocket + reinforced stitching

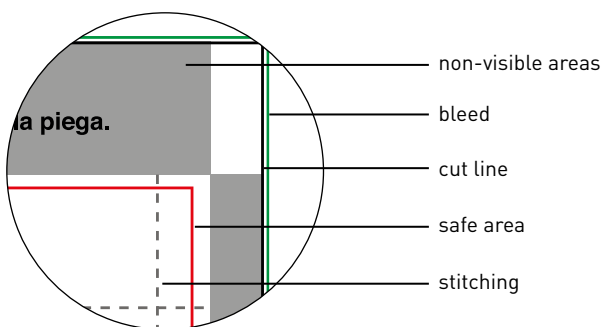


in this example:
pole pocket above and below +
reinforced stitching on all sides

ordered dimensions:
50x80 cm

file dimensions:
width= 54.2 cm → 50+2+2
(reinforced stitching)+0.1+0.1 (bleed)
height= 90.2 cm → 80+5+5 (pole pocket)+0.1+0.1 (bleed)

reinforced stitching is not required
on sides with a pole pocket



The folded over pole pocket is
suitable for poles with a diameter
of up to 3 cm.

