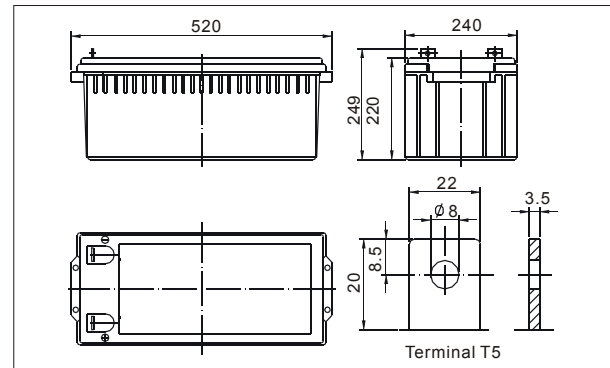


● Outer dimensions (mm)



ANETENERGY sealed lead-acid rechargeable battery (VRLA battery) is leak-proof and maintenance free. The Superiority of VRLA battery is derived from its uniquely efficient oxygen recombination technology. The oxygen evolved from the positive plates diffuses through the micro porous glass fiber mat to the negative plates where it is changed back to water by recombination reaction, eliminating the need for water addition. The result is a maintenance free battery.

● Battery Construction

Component	Positive plate	Negative plate	Container	Cover	Safety valve	Terminal	Separator	Electrolyte
Raw material	Lead dioxide	Lead	ABS	ABS	Rubber	Copper	Fiberglass	Sulfuric acid

● General Features

- Absorbent Glass Mat (AGM) technology for efficient gas recombination of up to 99% and freedom from electrolyte maintenance or water adding.
- Not restricted for air transport-complies with
- Can be mounted in any orientation.
- Computer designed lead, calcium tin alloy grid for high power density.
- Long service life, float or cyclic applications.
- Maintenance-free operation.
- Low self discharge.

● Application

- Alarm System
- Medical Equipment
- Cable Television
- Control Equipment
- UPS
- Communication Equipment
- Toys
- Emergency power System
- Power Tools
- Security System

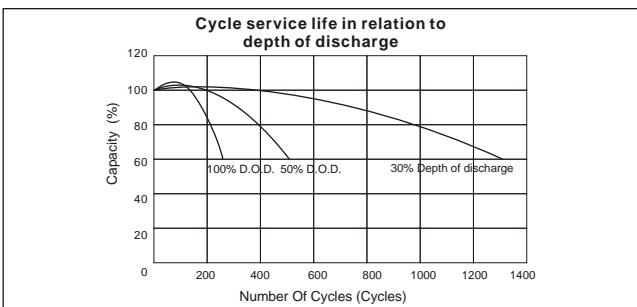
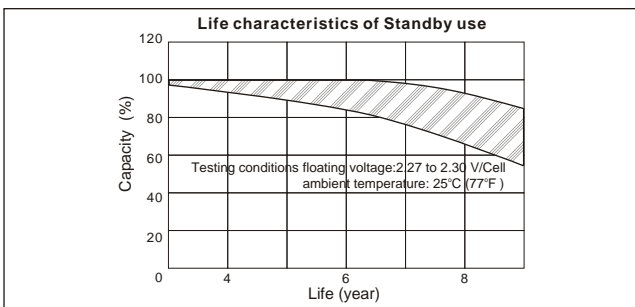
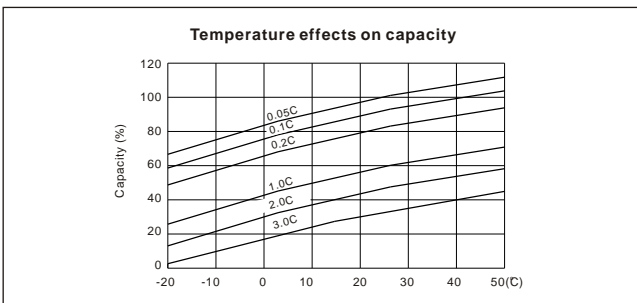
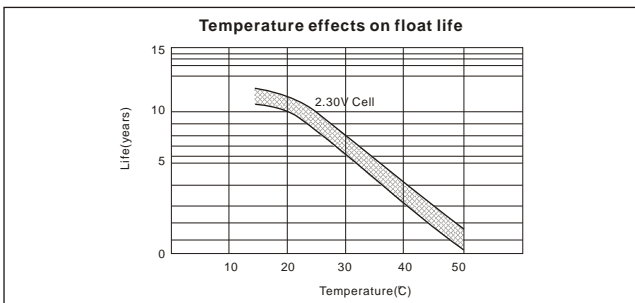
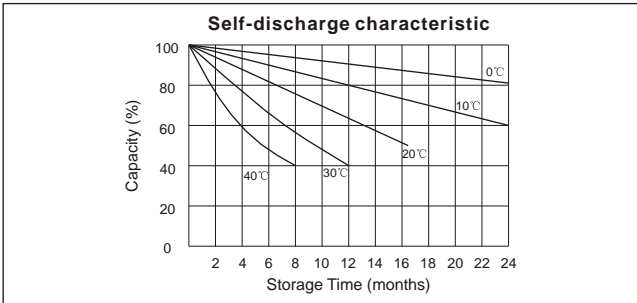
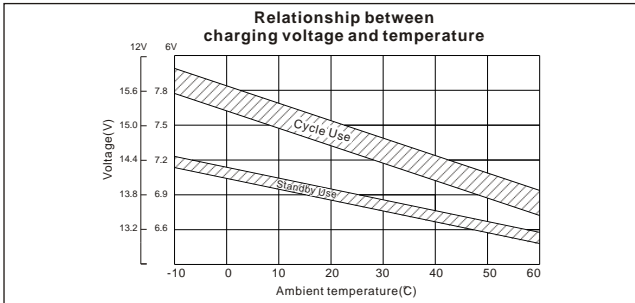
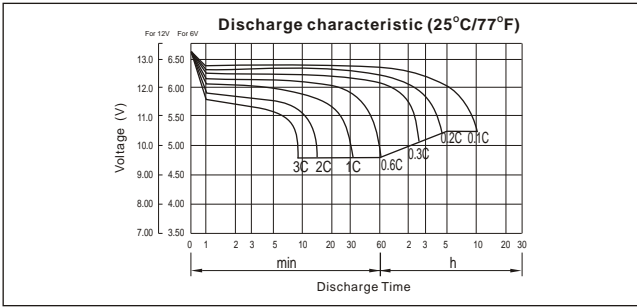
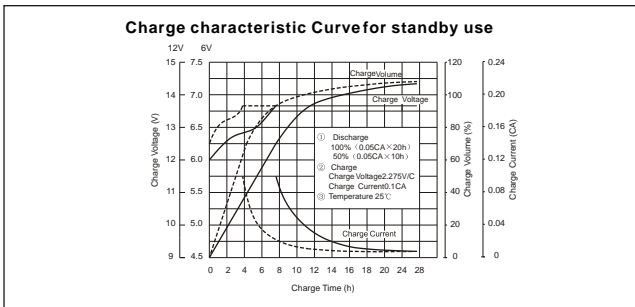
● Specifications

Nominal Voltage		12V
Capacity (10 hr 25°C)		260Ah
Design Life		10 Years
Dimensions	Length	520 mm (20.47inch)
	Width	240 mm (10.24 inch)
	Height	220 mm (8.66 inch)
	Total Height	249 mm (9.80 inch)
Approx. Weight		67 Kg (147.70lbs)
Capacity 25°C (77°F)	10 hr rate	260A h
	3 hr rate	200Ah
	1 hr rate	162.5Ah
Internal Resistance (Full charged Battery at 25°C (77°F))		2.6m Ω

Capacity affected by Temperature (20hr)	40°C	102%
	25°C	100%
	0°C	85%
	-15°C	65%
Self-Discharge at 25°C	3 month	Remaining capacity: 91%
	6 month	Remaining capacity: 82%
	12 month	Remaining capacity: 65%
Normal operating temperature		25°C ± 3°C (77°F ± 5°F)
Operating temperature range		-15°C ~ 50°C (5 ~ 122°F)
Float charging voltage (25°C)		13.60 to 13.80V
Cyclic charging voltage (25°C)		14.50 to 14.90V
Maximum charging current		75A
Terminal material		Copper
Maximum Discharge current		2000A (5sec)

ANTENERGY

12V260Ah



F.V/Time	Constant Current Discharge Characteristics(Amperes,25°C)								Constant Power Discharge Characteristics(Watts,25°C)							
	5min	10min	15min	30min	1h	3h	5h	10h	5min	10min	15min	30min	1h	3h	5h	10h
10.80V	665.0	477.3	360.0	220.0	155.0	62.50	42.00	25.00	7325.0	5151.5	3950.0	2500.0	1775.0	725.0	487.5	298.5
10.50V	700.0	496.2	412.5	245.0	157.5	65.00	43.60	25.25	7700.0	5318.2	4018.2	2800.0	1809.8	762.5	512.5	300.0
10.20V	750.0	511.4	439.8	270.0	160.0	66.25	44.50	25.50	8125.0	5484.8	4225.0	3075.0	1840.2	775.0	520.0	301.5
9.60V	875.0	534.1	487.5	300.0	162.5	67.50	44.50	25.75	9500.0	5772.7	4575.0	3450.0	1865.2	787.5	525.0	303.0

Packing Dimensions	524*284*280mm	Quantity Per Box	1 pcs	Net weight Per Box	67kg	Gross weight Per Box	68kg
Splint	Europe (1200*800mm)	Australia(1150*1100mm)	Standard(1100*950mm)	Nonstandard (1000*1150mm)			
20'DRY 8.5'	220PCS	230PCS	228PCS	230PCS			