

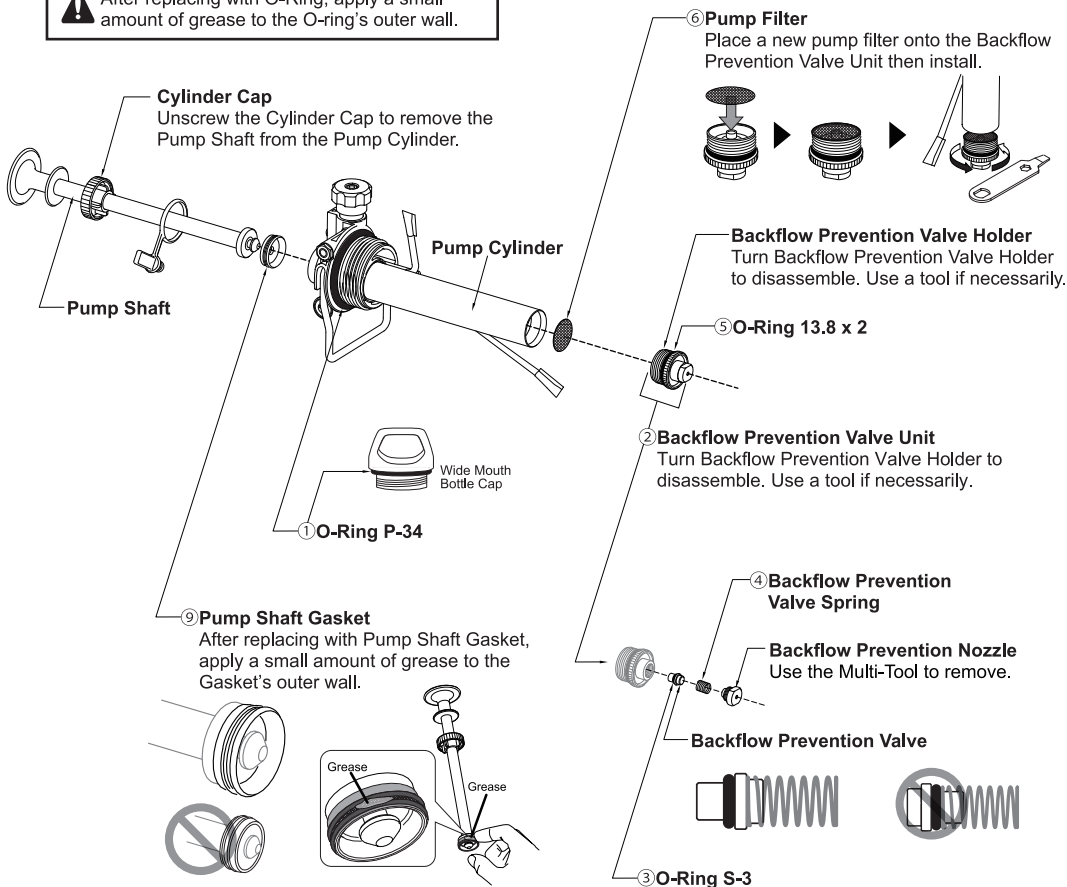
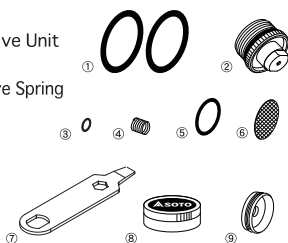
Disassemble and examine the pump unit when fuel leak is detected or when pressure does not accumulate with pumping. Keep gaskets and O-ring free of dust. Exchange gaskets and O-ring immediately when cuts, cracks, or deformations are found.

⚠ Do not use tools with O-ring surface to avoid scratching. Use fingers when replacing O-ring.

⚠ After replacing with O-Ring, apply a small amount of grease to the O-ring's outer wall.

- ① 2 O-Rings P-34
- ② Backflow Prevention Valve Unit
- ③ O-Ring S-3
- ④ Backflow Prevention Valve Spring
- ⑤ O-Ring 13.8 x 2mm
- ⑥ Pump Filter
- ⑦ Multi-Tool
- ⑧ Silicone Grease
- ⑨ Pump Shaft Gasket

MADE IN JAPAN



Shin Fuji Burner CO.,LTD.

1-1-3 Miyukihama, Mito-cho, Toyokawa-city,
Aichi-pref, 441-0314 Japan
Phone:+81 533 75 5000 FAX:+81 533 75 5033

SOTO USA Inc.

110 Rustic Place, Eugene, Oregon 97401 USA
Phone: 503-314-5119
info@sotooutdoors.com www.sotooutdoors.com