

INSTALLATION GUIDE

2015+ WRX DOWNPIPE

MAPPerformance.com

TOOLS REQUIRED:

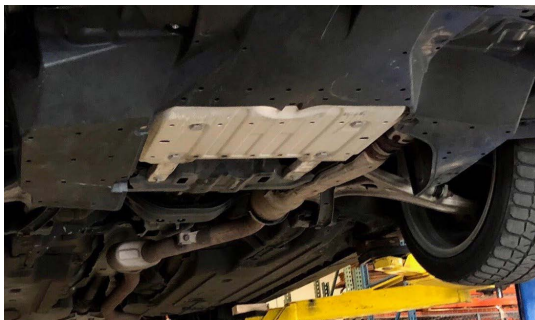
8mm, 10mm, 12mm, 13mm, 14mm, 17mm Sockets
3/8" Ratchet and Swivel
Various 3/8 Extensions
Impact if available
O2 socket or 22mm wrench
Penetrating Oil



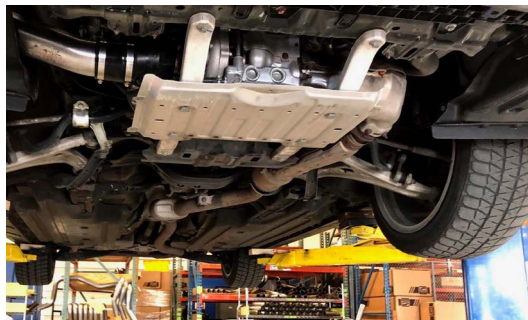
WHAT'S IN THE BOX:

1x MAP WRX Downpipe
1x 3" V-band Clamp
1x M6 Cap Screw
1x M6 Nut
1x 3" 2 Bolt Gasket
2x M10x1.25x40 Bolts
2x M10x1.25 Flange Nuts
1x Grimmspeed Flange adapter
for stock exhaust (Optional)

1. REMOVE SPLASH SHIELD



2. REMOVE LOWER ENGINE GUARD



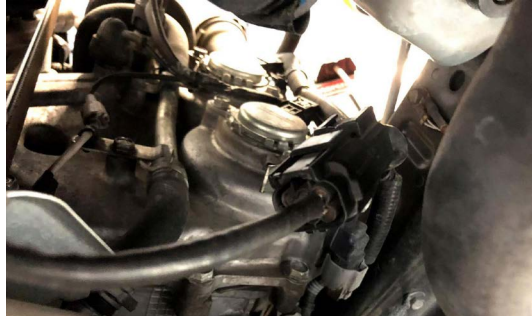
3. DISCONNECT PRE AND POST CAT O2 SENSORS CONNECTORS AND REMOVE THEM (22MM)



3. CONTINUED



3. CONTINUED



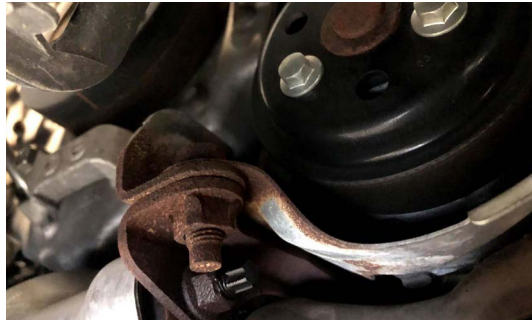
3. CONTINUED



**4. REMOVE GROUND STRAP BOLT,
MOVE GROUND STRAP ASIDE**



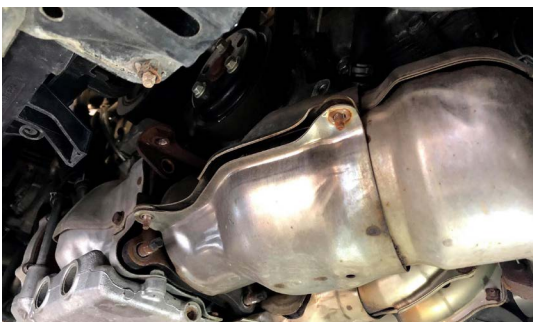
**5. REMOVE BRACKET AND HEATSHIELD
UNDER WATER PUMP (3 12MM AND 2 14MM)**



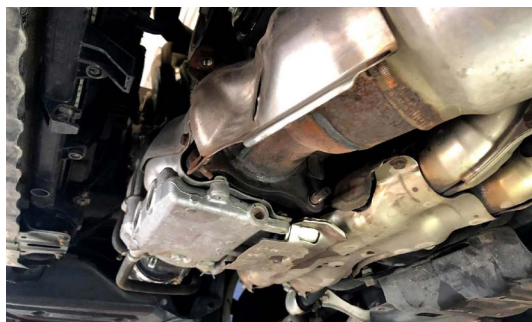
5. CONTINUED



**6. REMOVE FURTHEST FORWARD
DOWNPIPE HEAT SHIELD**



6. CONTINUED



**7. REMOVE 4 DOWNPIPE NUTS, USE OF EXTENSIONS
AND SWIVEL SOCKETS WILL MAKE THIS MUCH EASIER
(14MM NUTS) NOTE- IMPACT TOOLS, HEAT AND PENE-
TRATING OIL WILL MAKE THIS PART MUCH EASIER AND
WILL AID IN NOT SNAPPING THE STUDS, IT IS HOWEVER
COMMON THAT THE ENTIRE STUD WILL PULL OUT AND
NOT JUST THE NUT. THIS IS FINE**

7. CONTINUED



8. REMOVE TRANS BRACKET BOLT (14MM)



9. REMOVE SPRING BOLTS X2



10. REMOVE THE OLD DOWNPIPE, THIS MAY REQUIRE 2 PEOPLE AND SOME WIGGLING



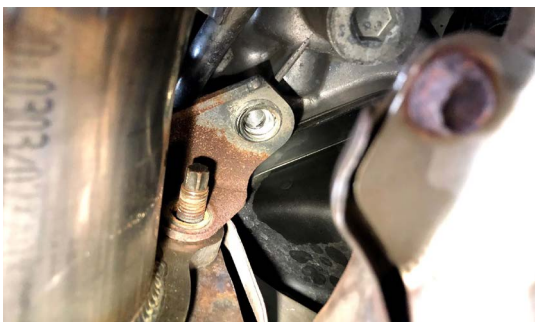
11. SLIDE FRONT HALF OF DOWNPIPE INTO PLACE, DO NOT INSTALL NUTS JUST YET



11. CONTINUED



12. INSTALL LOWER BRACKET YOU REMOVED EARLIER AND THREAD THE BOLTS IN BY HAND



13. REINSTALL DOWNPIPE BOLTS AND STUDS IF NEED BE BY HAND



14. SNUG ALL NUTS AND BOLTS DOWN THAT YOU JUST INSTALLED BY HAND



15. SLIDE 3 INCH V-BAND CLAMP OVER FRONT DOWNPIPE HALF



16. PLACE REAR HALF OF DOWNPIPE ONTO TRANS HANGER BRACKET, DO NOT INSTALL BOLT



**17. CONNECT BOTH ENDS TOGETHER VIA V-BAND CLAMP, DO NOT FULLY TIGHTEN V-BAND CLAMP YET
NOTE: IT MAY BE NEEDED TO USE AN ADAPTER TO ADAPT OUR DOWNPIPE TO THE FACTORY CATBACK
-INSTALL 2 BOLT GASKET AND BOLTS INTO THE 2 BOLT FLANGE (WE HAVE OPTED TO ALSO USE A GRIMMSPEED ADAPTER) TIGHTEN THESE BOLTS AND THE V-BAND CLAMP**

17. CONTINUED



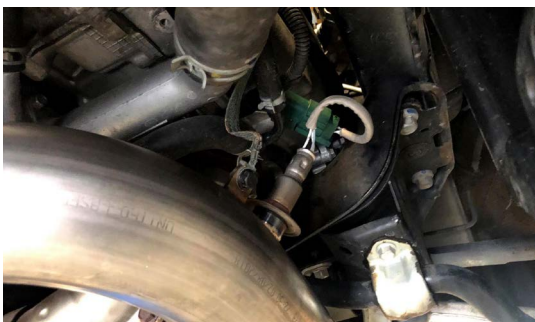
17. CONTINUED



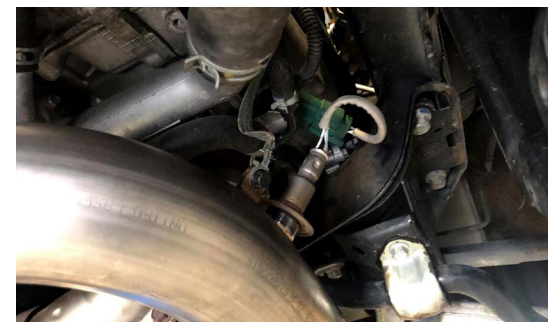
18. INSTALL BOLT INTO TRANSMISSION HANGER BRACKET (14MM)



19. INSTALL GROUND STRAP W/ PROVIDED HARDWARE ONTO TAB ON DOWNPIPE



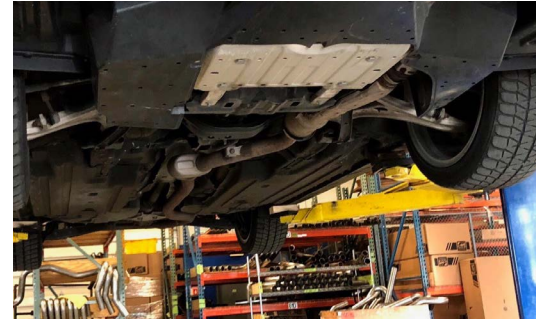
20. INSTALL O2 SENSORS INTO NEW DOWNPIPE, BE SURE TO PUT THEM IN THE SAME SPOT YOU REMOVED THEM FROM. THE CONNECTORS ARE DIFFERENT IF YOU MANAGE TO MIX THEM UP



21. INSTALL WATER PUMP HEAD SHIELD AND BRACKET, BE SURE TO THREAD ALL THE BOLTS IN BY HAND BEFORE SNUGGING ANY OF THEM UP



22. START THE VEHICLE AND CHECK FOR LEAKS, ONCE FINISHED REINSTALL ENGINE OIL PAN GUARD AND ENGINE SPLASH SHIELD



THANK YOU FOR CHOOSING MAPERFORMANCE!

If you have any problems or concerns during installation of this product, feel free to call or email us:

1-888-MAPERFORMANCE

ajohnson@maperformance.com

Show us some photos! [@maperformance](#) / [#maperformance](#)