

# INSTALLATION GUIDE

## MK5 SUPRA CATBACK EXHAUST

**MAP** Performance *Redefining Fast*

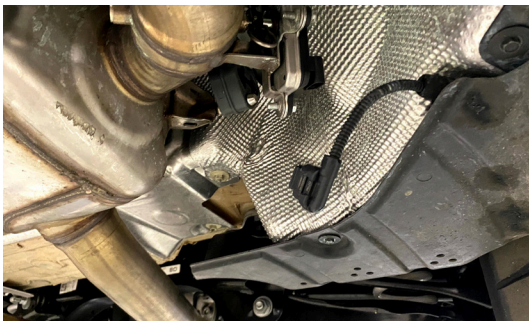
### TOOLS REQUIRED:

13mm Deep socket  
10mm socket  
8mm  
Long extension  
Allen wrench

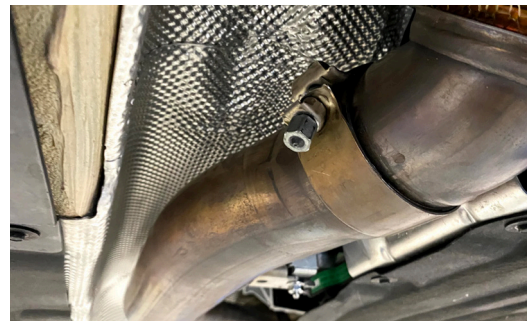
### WHAT'S IN THE BOX:

1x MAP Oval front pipe  
1x 3.5" MAP midpipe  
1x 3.5" MAP valved muffler section  
1x 3.5" Vband clamp  
1x 3.5" Slip clamp  
8x 5mm Cross member spacers  
2x Hanger clamps  
1x 3" Clamp for factory downpipe connection  
2x Tips

**1. REMOVE EXHAUST VALVE CONNECTOR AT THE REAR OF THE EXHAUST**



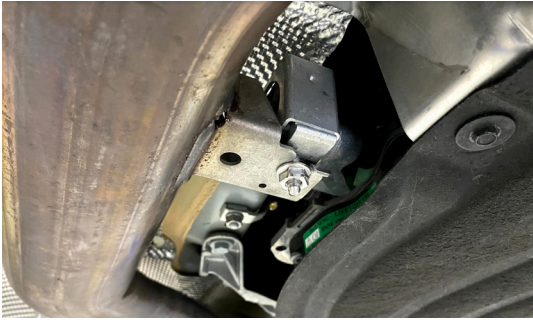
**2. REMOVE THE PINCH CLAMP HOLDING THE EXHAUST TO THE DOWNPIPE**



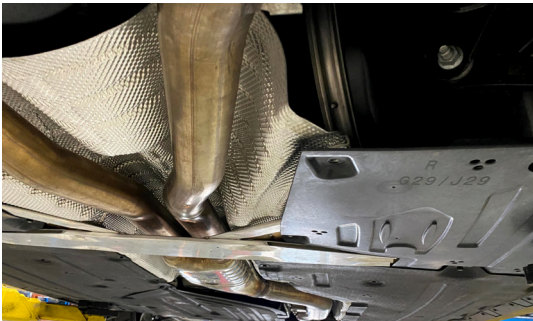
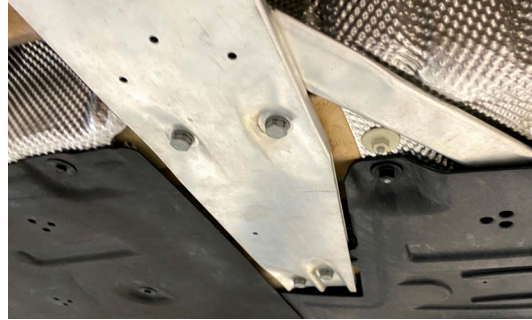
**3. REMOVE 13MM HOLDING THE CENTER EXHAUST HANGER TO THE CAR**



**4. REMOVE FRONT HANGER 13MM NUT**



**5. REMOVE THE UNDER CHASSIS BRACE, 8 13MM BOLTS AND 2 8MM SCREWS ON THE ENDS**



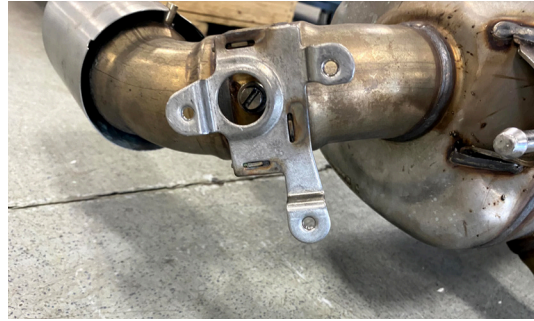
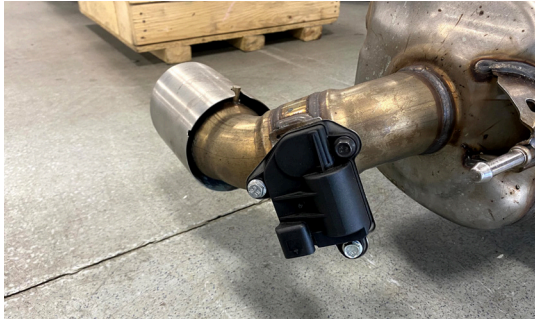
**6. REMOVE THE 4 13MM NUTS HOLDING THE MUFFLER SECTION TO THE CAR, THEN REMOVE THE ENTIRE EXHAUST FROM THE CAR**



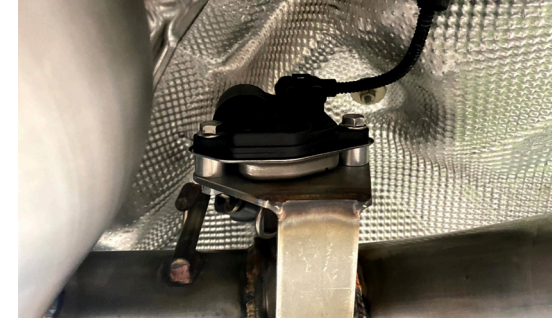
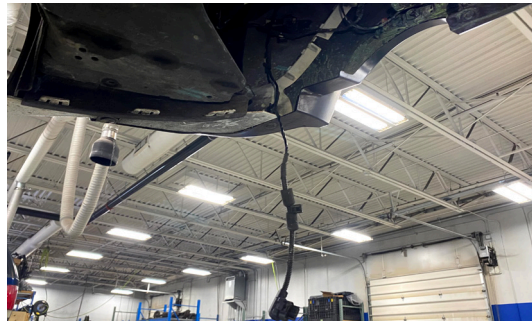
**7. REMOVE THE EXHAUST HANGERS FROM THE REMOVED EXHAUST**



**8. REMOVE EXHAUST VALVE ACTUATOR FROM THE REMOVED EXHAUST**



**9. REMOVE REAR RIGHT SIDE HEAT SHIELD, ALLOWING YOU TO MOVE THE EXHAUST VALVE ACTUATOR WIRING HARNESS UP AND OVER THE CRASH BAR. THIS WILL MOVE THE CONNECTOR TO SPACE YOU SEE IT PICTURED**



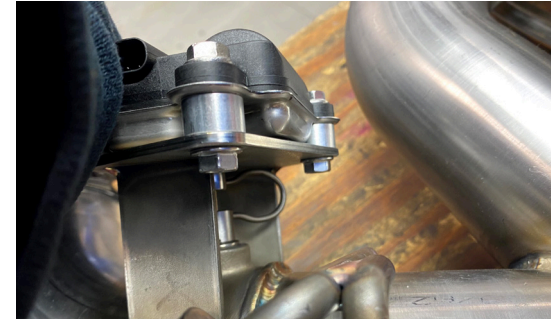
**10. REINSTALL THE REAR HEAT SHIELD**

**11. INSTALL THE FRONT PIECE OF THE MAP CATBACK, SECURE IT WITH FRONT HANGER BRACKET (13MM) AND THE DOWNPIPE PINCH CLAMP. BE SURE THE EXHAUST IS FULLY SLIPPED IN PLACE IN THE DOWNPIPE BEFORE SECURING THE CLAMP**

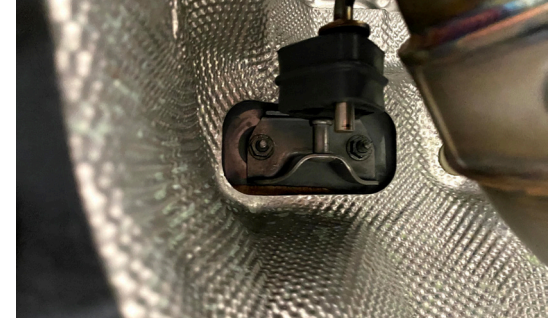
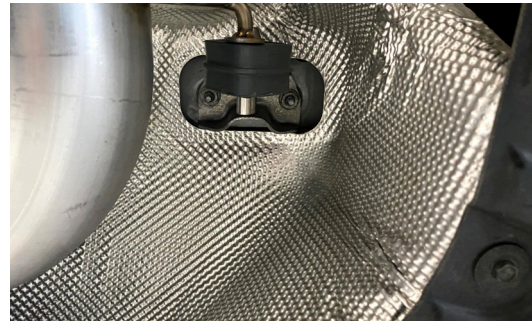




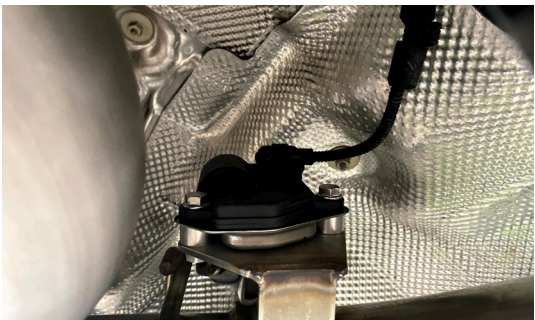
**12. INSTALL EXHAUST VALVE ACTUATOR TO MAP SUPRA CATBACK MUFFLER SECTION, BE SURE TO INSTALL THE INCLUDED SPACER AND HARDWARE AS PICTURED, INSTALL THE OEM EXHAUST VALVE ACTUATOR SPRING IN THE POSITION PICTURED - IT WILL BE OBSTRUCTED IF INSTALLED BACKWARDS**



**13. INSTALL THE MUFFLER SECTION OF THE SUPRA CATBACK ONTO THE CAR, SECURING THE MUFFLER WITH THE OEM HANGERS BY REINSTALLING THE 4 13MM BOLTS**



**14. INSTALL CENTER SECTION OF THE CATBACK, SECURING IT WITH 1 OEM EXHAUST HANGER**



**15. ENSURE THAT ALL PIECE OF THE CATBACK ARE ROTATED IN THE ORIENTATION PICTURED SO THERE ARE NO ISSUES WITH CLEARANCE OR THE FITMENT OF THE TIPS IS UNDESIRABLE.**



**16. ONCE YOU ARE HAPPY WITH FITMENT AND IT APPEARS AS PICTURED, THEN TIGHT THE 2 VBAND CLAMPS FULLY HOLDING THE CATBACK TOGETHER.**

**17. REINSTALL UNDERCHASSIS BRACE, INSTALL INCLUDED SPACERS AND INSTALL THE IN THE 8 FRONT HOLES AS PICTURED**



**18. START AND CHECK FOR LEAKS DONE!**



**THANK YOU FOR CHOOSING MAPERFORMANCE!**

If you have any problems or concerns during installation of this product, feel free to call or email us:

1-888-MAPERFORMANCE

support@maperformance.com

Show us some photos! @maperformance / #maperformance