



MAP Q60 Rear Muffler Delete Install Instructions



What's in the box?

- 2x Muffler Delete Pipes
- 2x Axle-Back Gaskets
- 2x Bolt-On Tips
- 4x M10 Flange Nuts

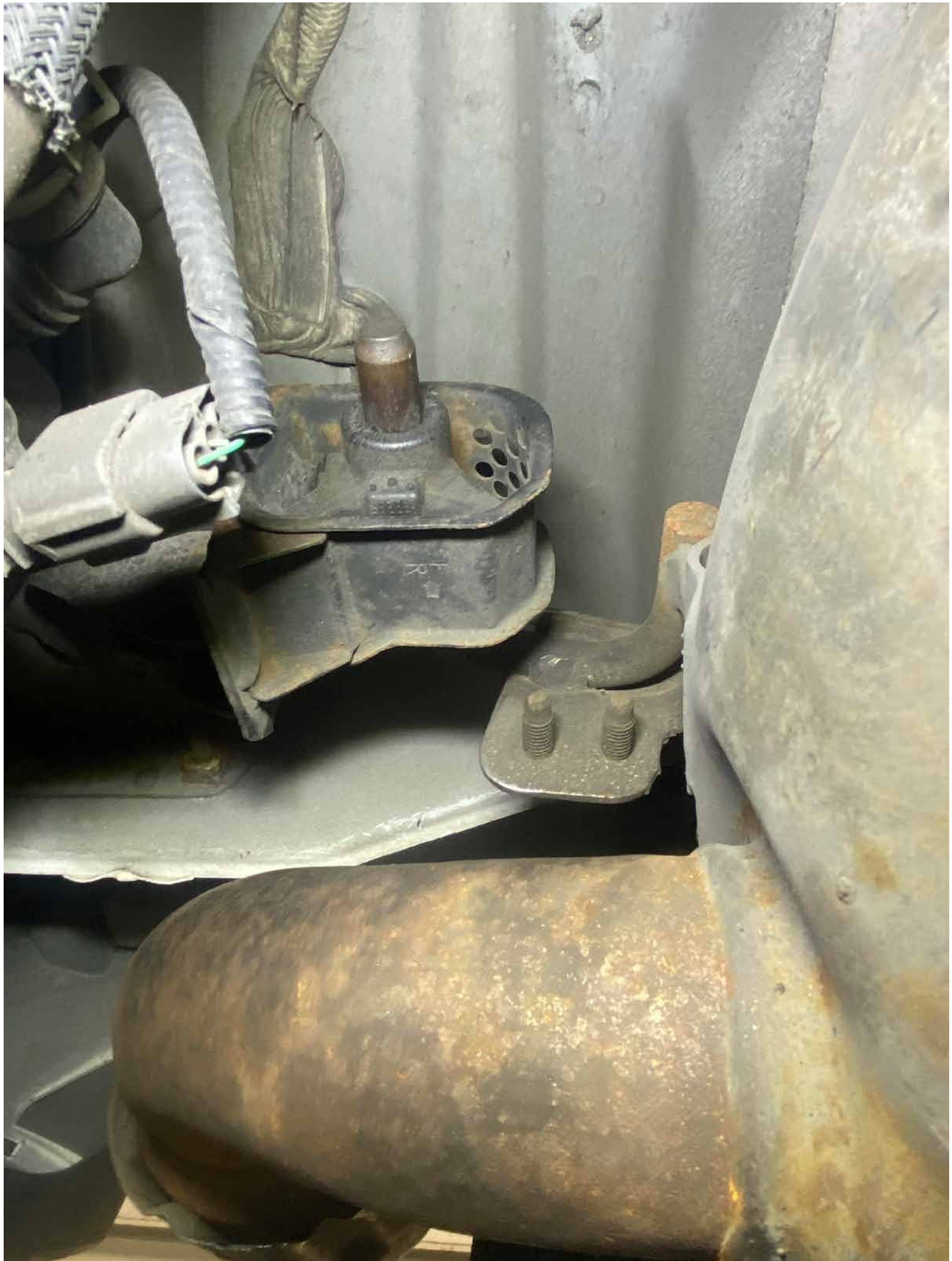
Tools needed



You will need:

- 3/8ths ratchet
- 3/8ths 12mm socket
- 3/8ths 14mm socket

Step 1



Remove 6 12mm bolts holding exhaust hanger to the vehicle

Step 2



Remove 4 14mm nuts securing the factory muffler to the factory exhaust

Step 3



Remove factory muffler

Step 4



Remove exhaust hangers from the factory muffler and reinstall onto the vehicle

Step 5



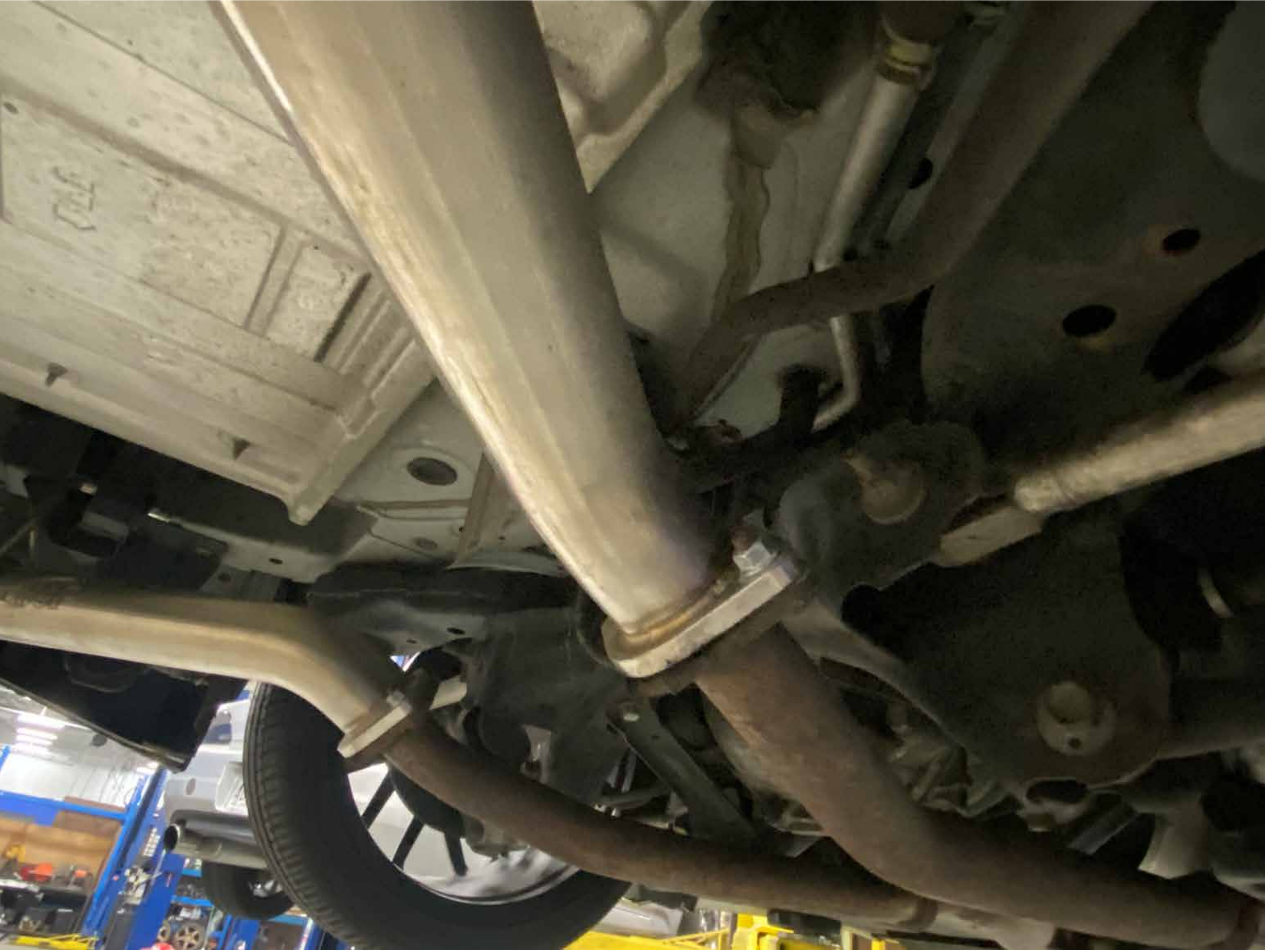
Install new included gaskets onto factory exhaust, then slide MAP Q60 Rear Muffler deletes into place

Step 5.1



Install new included gaskets onto factory exhaust, then slide MAP Q60 Rear Muffler deletes into place

Step 6



Secure to factory exhaust with included hardware and tighten to 35 FTLBS

(We include extra bolts incase your factory studs become stripped, if your studs are in good working order these will not be used)

Step 7

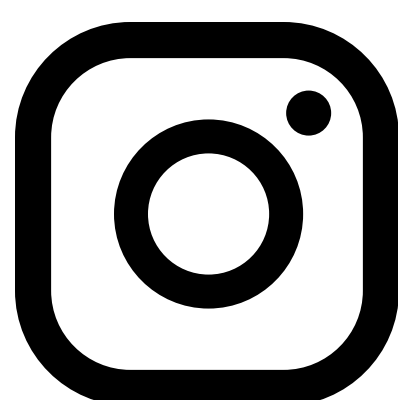


Install included tips and secure with included clamps. Be sure to use a dab of anti seize on the clamp threads to prevent galling

We hope you enjoy your purchase! Reach out to us with any issues or concerns.



1-888-627-3736



@



support@maperformance.com



www.facebook.com/modernautomotiveperformance/

