



## MAP INFO-DPC

### Install Instructions



## What's in the box?

2x Catted Downpipes

2x Lower Downpipe Gaskets

4x M10 Flange Nuts

4x M10 Flange Bolts

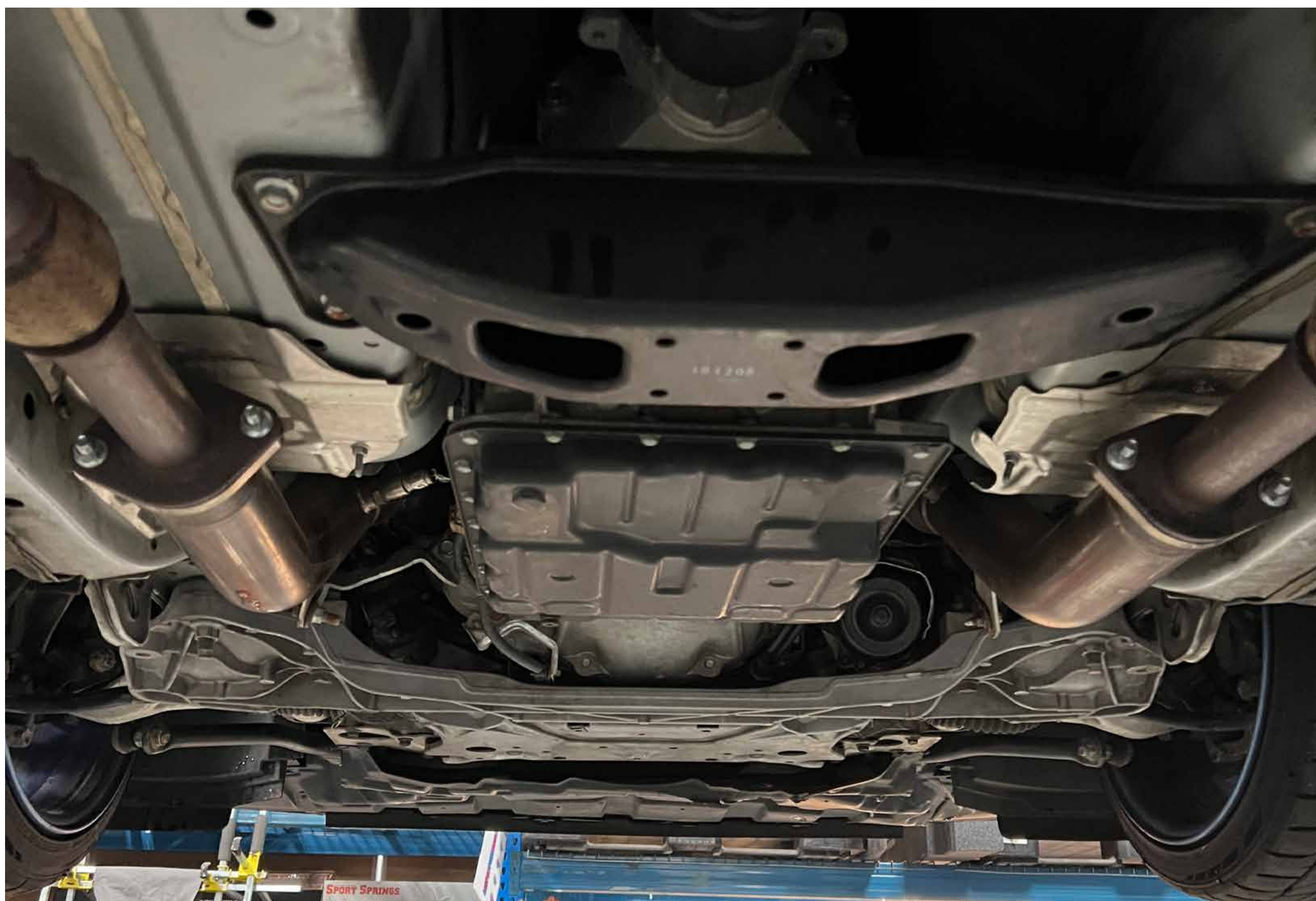
# Tools needed



## You will need:

- 14mm socket
- 14mm wrench
- 3/8" ratchet
- 3/8" extension
- 3/8" swivel socket
- 02 Sensor socket

# Step 1



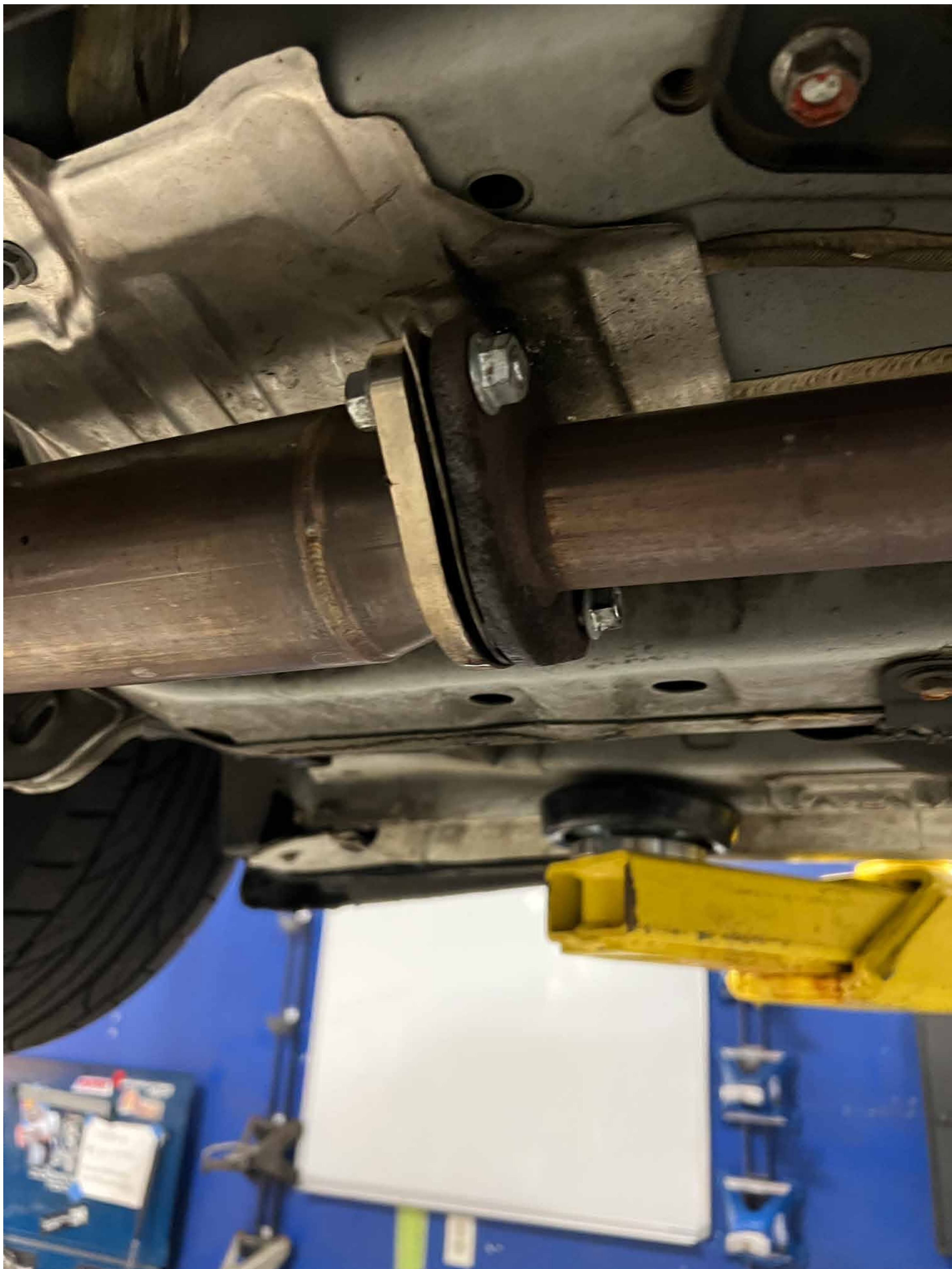
To remove OEM downpipes, follow these instructions in reverse order of this installation guide

## Step 2



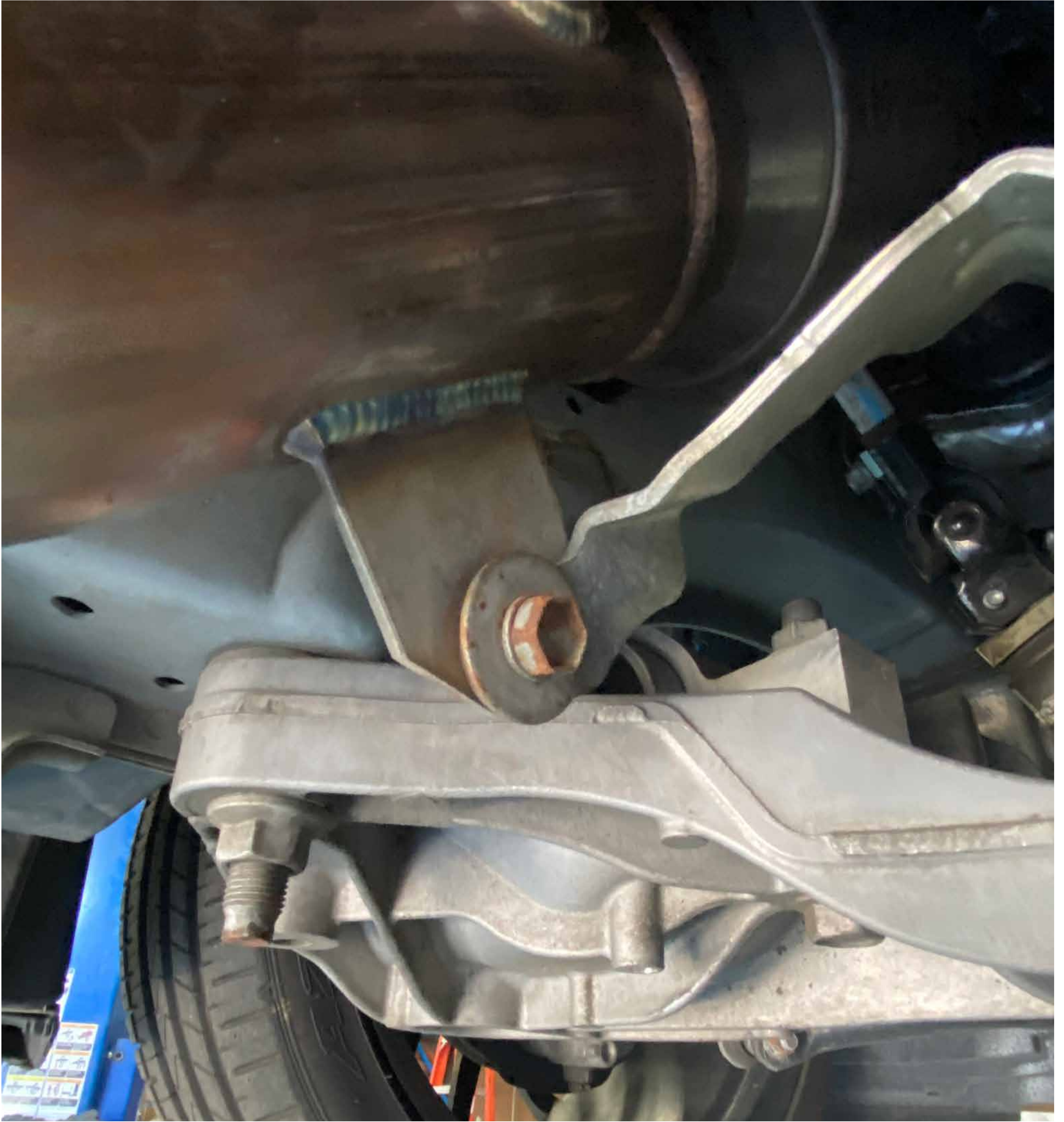
Install O2 sensors into the downpipes with O2 sensor socket to avoid damaging the sensor

## Step 3



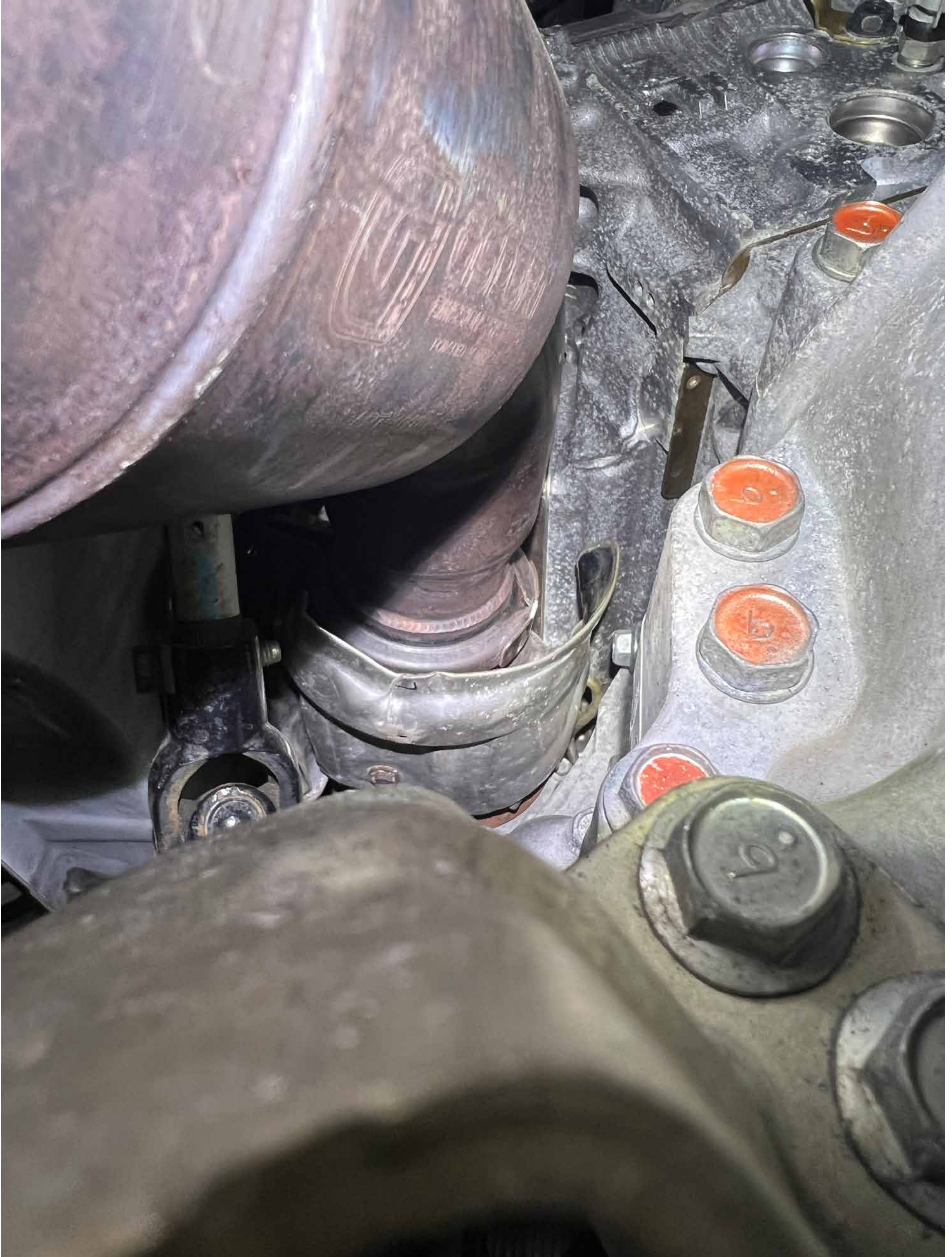
Attach MAP downpipes to the mid-pipes with included hardware, and leave the connection loose until a later step

## Step 4



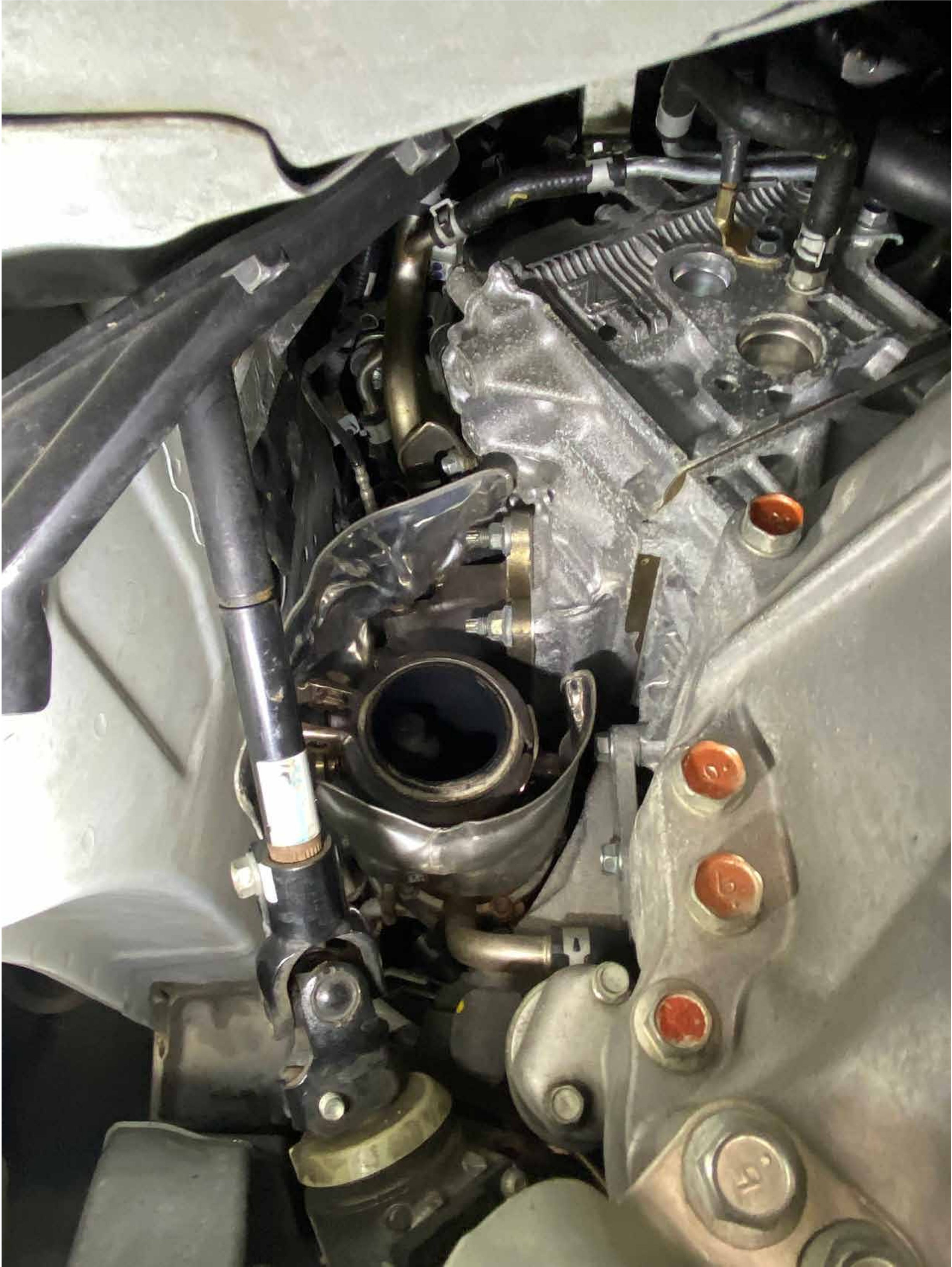
Attach downpipes to OEM downpipe hanger brackets and leave the hardware loose until a later step

# Step 5



Push the downpipe upwards until the vband on the MAP downpipe meets with the outlet flange on the turbo

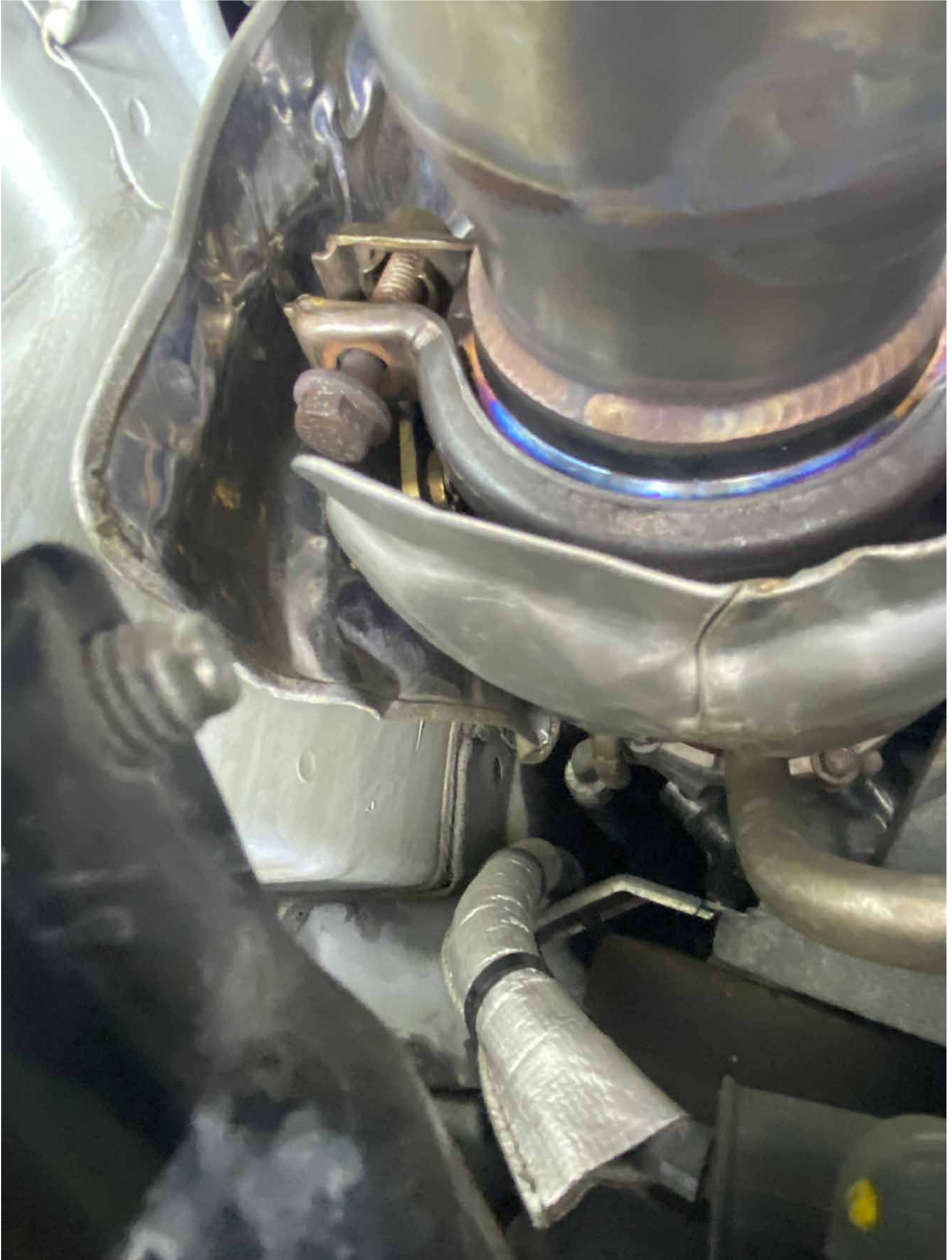
## Step 6



Slip vband clamp over the MAP downpipe, we have found it to be easier with the bolt removed from the downpipe



# Step 7



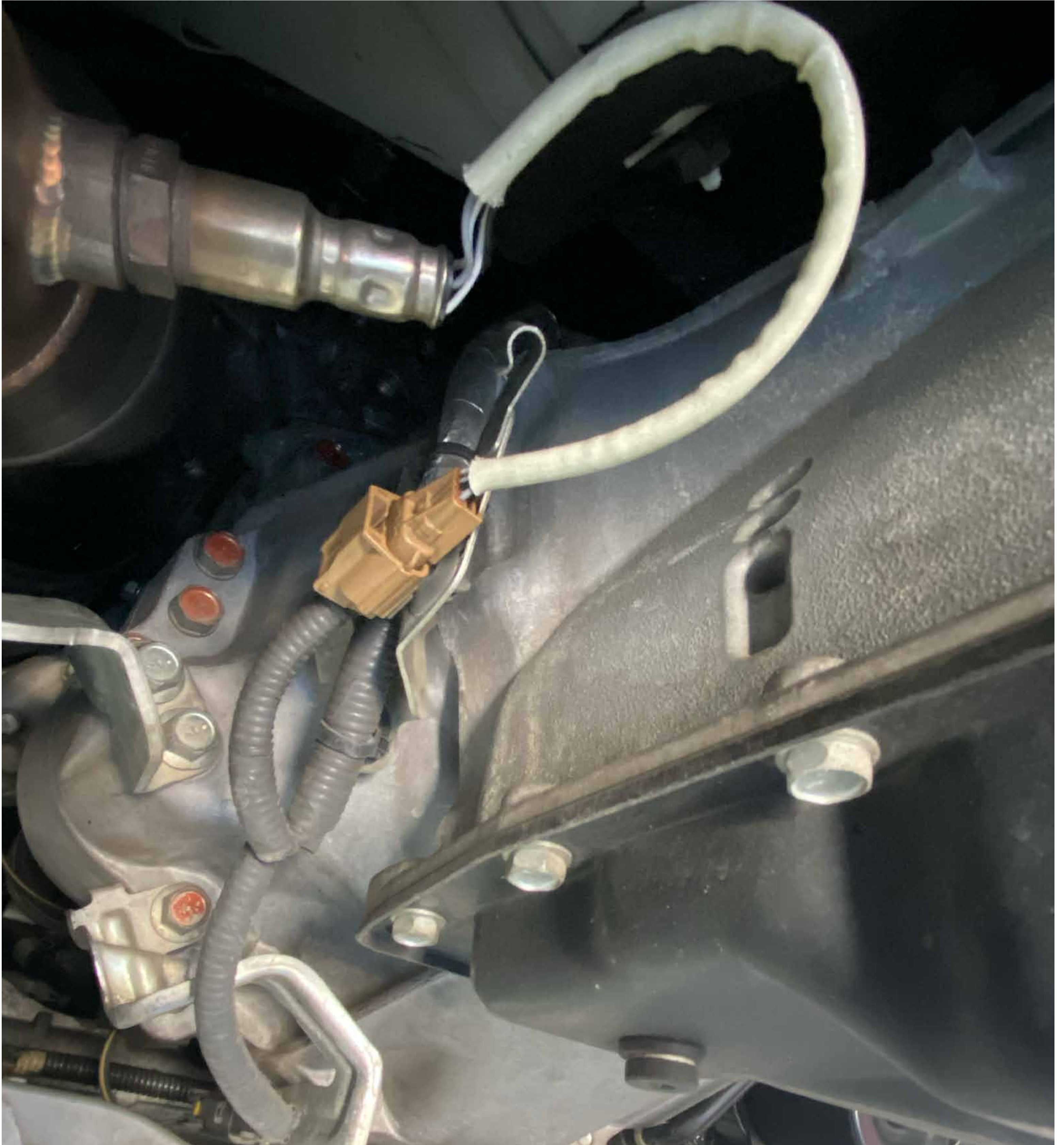
Using an extension and a 14mm socket, reinstall the vband bolt and tighten, it may be needed to pry the heat shield around the turbo open slightly to allow room for hands and tools

# Step 8



Tighten the midpipe connection and hanger connection

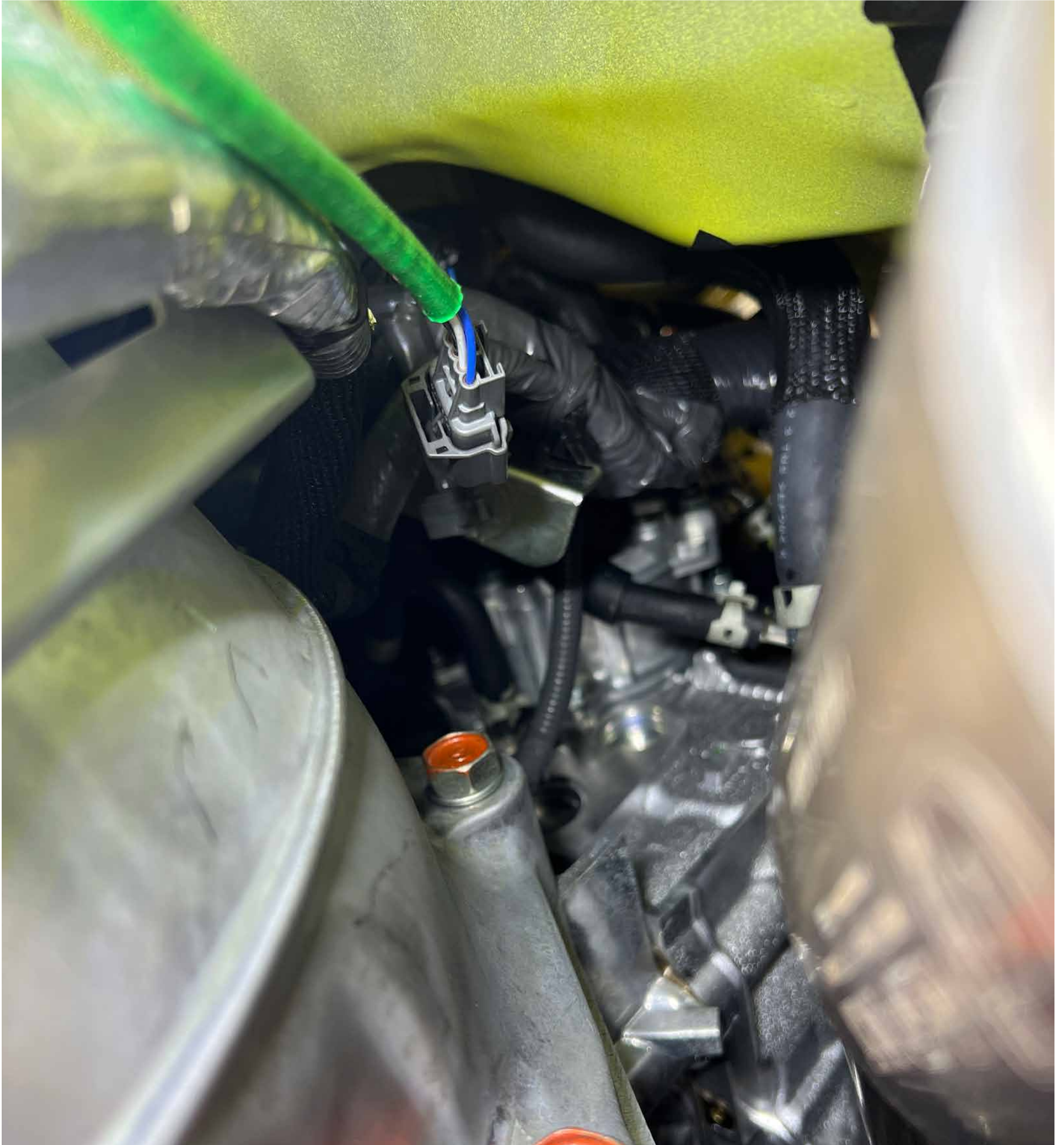
# Step 9



Plug in 02 sensors

IF installing on 2023+ Nissan Z you must unclip the passenger side 02 sensor connector from its mount to allow for enough slack to connect 02 sensor

# Step 9.1



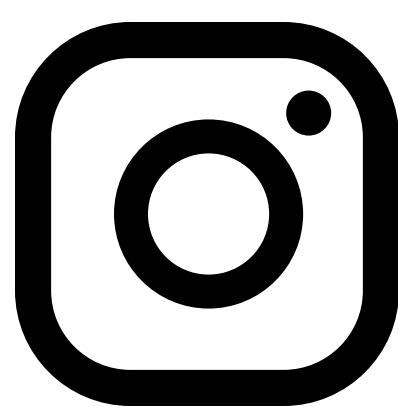
Plug in O2 sensors

IF installing on 2023+ Nissan Z you must unclip the passenger side O2 sensor connector from its mount to allow for enough slack to connect O2 sensor

We hope you enjoy your purchase! Reach out to us with any issues or concerns.



1-888-627-3736



@maperformance



support@maperformance.com



www.facebook.com/modernautomotiveperformance/

