



MAP FIST-AI

Install Instructions



What's in the box?

Custom MAP Fabricated intake pipe
5-ply silicone coupler
K&N RU-2820 Air Filter
Clamps
2016 models Come w/
necessary additional lines.

Tools needed



You will need:

- 3/8ths ratchet
- 8mm socket
- 10mm socket
- Allen wrench

Step 1



*** Some steps are only applicable for 2016 and beyond Fiesta ST's, if you have an older vehicle you can ignore these steps***

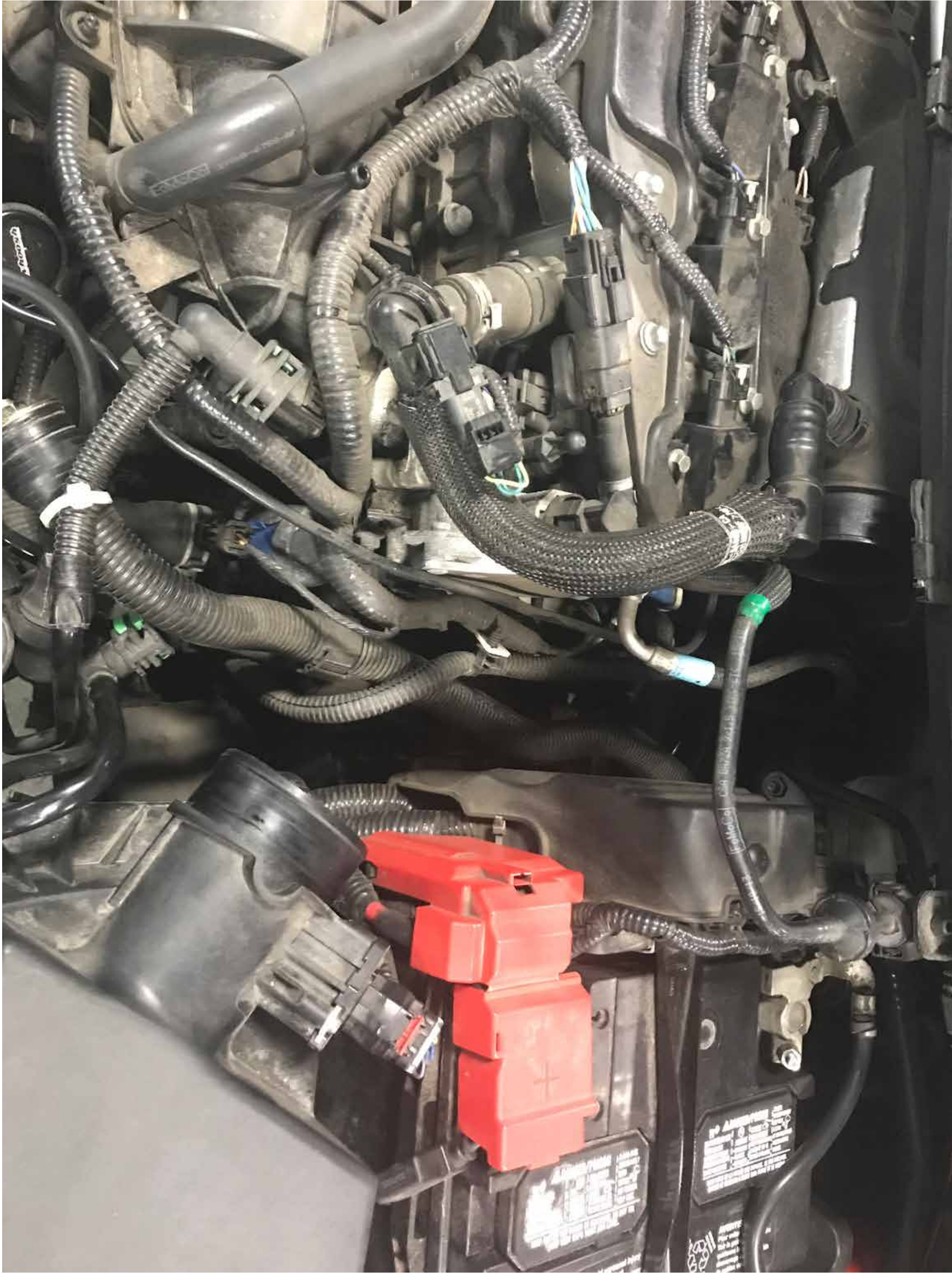
Remove 2 worm clamps holding intake tube to the airbox

Step 2



If 2016+ Remove 2 lines attached to the valve connected to the intake tube. The connectors are secured by a clip that needs to be lifted up on both sides to slide up, this will allow you to remove the fittings from the valve

Step 3



Remove intake tube, it should compress and slide out easily

Step 4



Unplug MAF sensor

Step 5



Remove intake filter box, you will need to unclip the intake snorkel and then the entire box will lift up and out with some force

Step 6



If 2016+ Use a razor blade to cut a slit in the hose at the T fittings, this would be the hose you disconnected earlier. Then install the included (and pictured) hose onto the T fitting

This can be done without removing the hose, however we opted to show you out of the car to get a better idea of what is being removed

Step 6.2



If 2016+ Use a razor blade to cut a slit in the hose at the T fittings, this would be the hose you disconnected earlier. Then install the included (and pictured) hose onto the T fitting

This can be done without removing the hose, however we opted to show you out of the car to get a better idea of what is being removed

Step 7



If 2016 + Removed the hose connected to the lower charge pipe and cap the charge pipe with the included fitting (as pictured)

Step 7.2



If 2016 + Removed the hose connected to the lower charge pipe and cap the charge pipe with the included fitting (as pictured)

Step 8



Install included coupler on the intake tube,
tighten the included worm drive clamp

Step 9



Install the MAF sensor onto the intake pipe, then install the intake onto the vehicle. secure the intake to the engine via the stud located under the vacuum pump. You will need to remove the nut and reuse it

Step 10

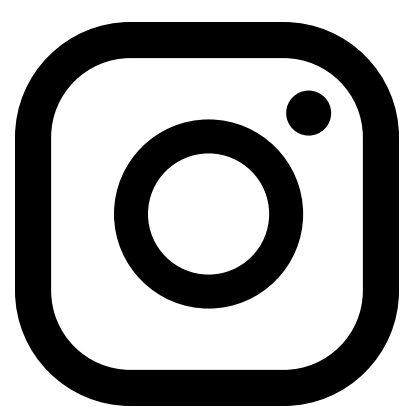


Connect the hose you installed earlier onto the intake, plug the maf sensor in and ensure all worm clamps are tight

We hope you enjoy your purchase! Reach out to us with any issues or concerns.



1-888-627-3736



@maperformance



support@maperformance.com



www.facebook.com/modernautomotiveperformance/

