



# MAP EVOX-PSR

## Install Instructions



### What's in the box?

- 1 MAP Billet power steering tank assembled with all fittings and screen
- 2 M6 stainless hold-down Allen head flange bolts.

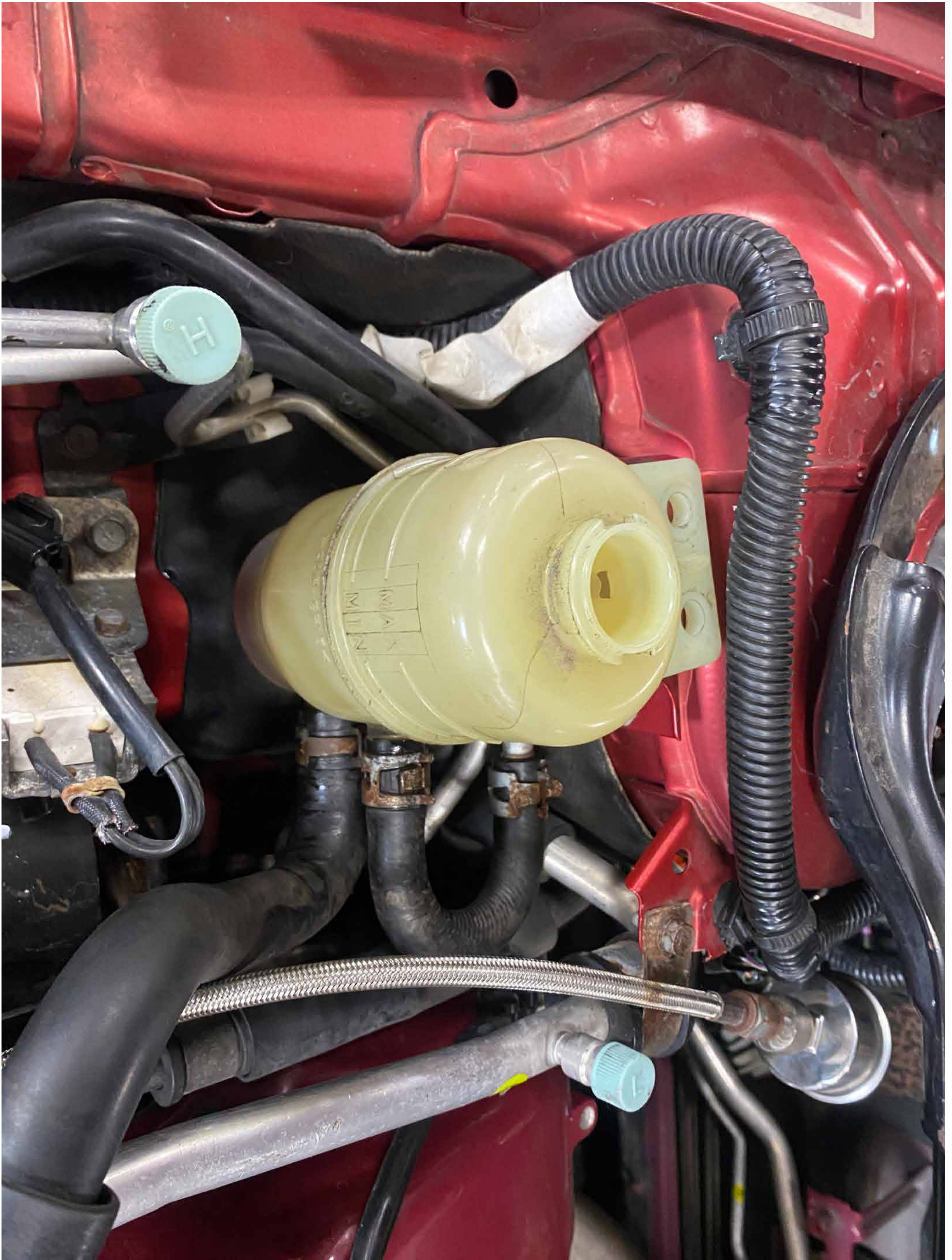
# Tools needed



## You will need:

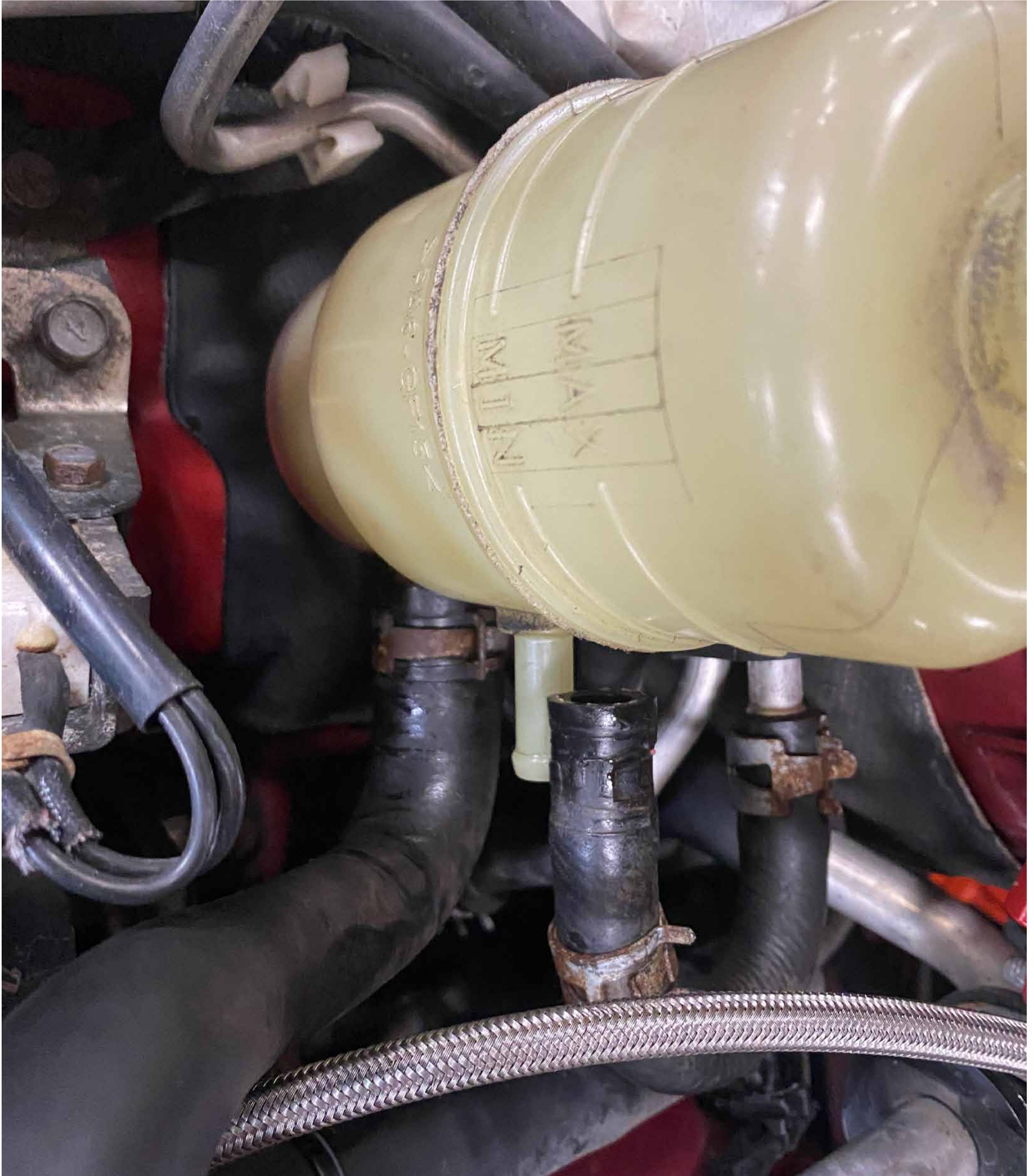
- Needle nose pliers
- 5mm allen wrench
- 10mm socket

# Step 1



Remove 2 10mm bolts holding factory power steering reservoir to the vehicle

## Step 2



Remove upper power steering reservoir hose from the reservoir. If you own a fluid suction pump now would be the time to remove as much of the power steering fluid in the reservoir as possible

# Step 3



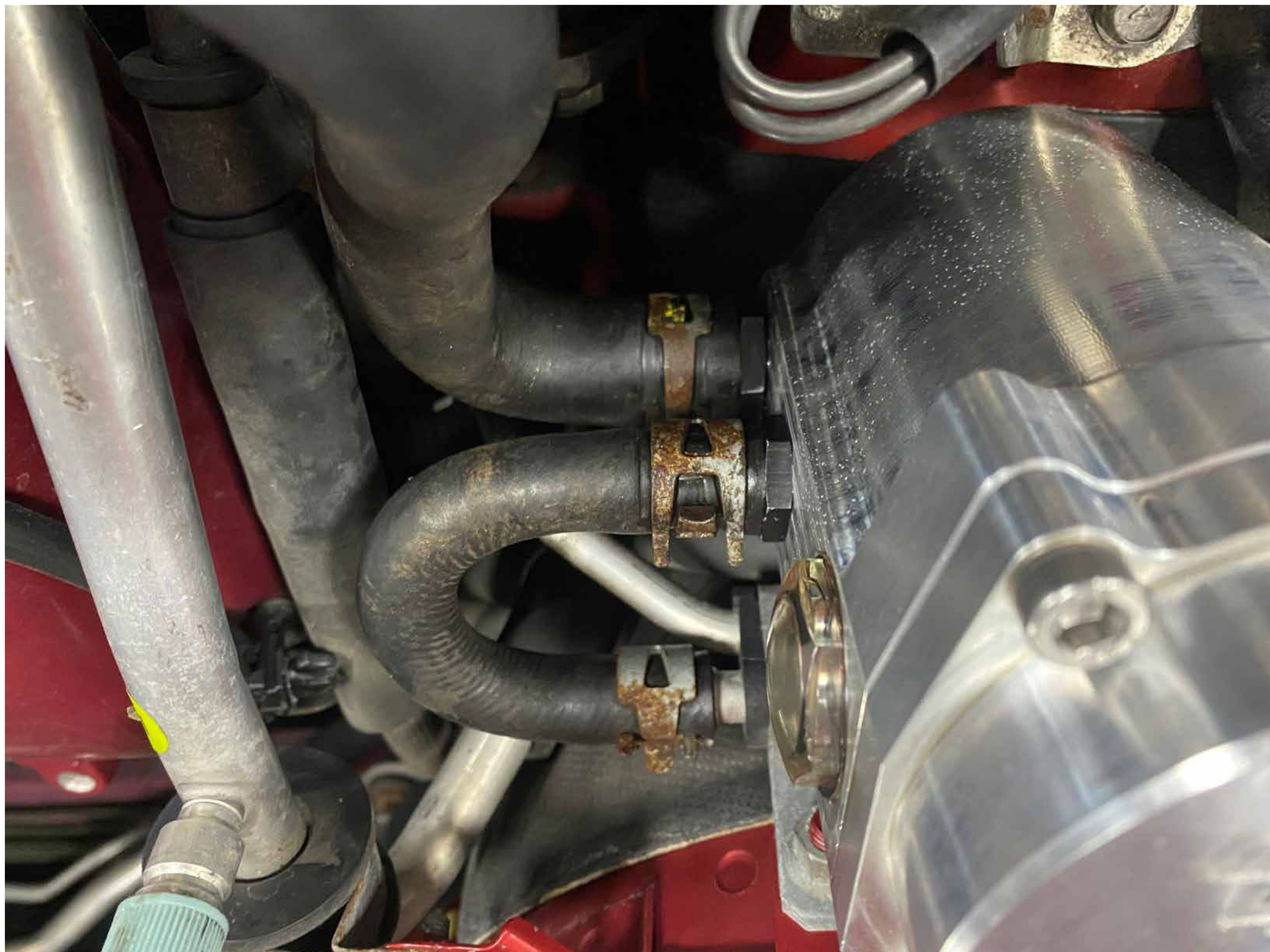
Move reservoir to the side and remove the lower hose

# Step 4



Attach lower hose to MAP evox power steering reservoir

# Step 5



Attach upper hose to MAP evox power steering reservoir

# Step 6



Attach MAP evox PSR to the factory reservoir mounting bracket using uncluded 5mm allen head bolts



# Step 7

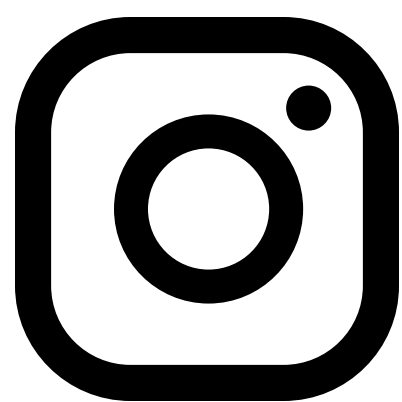


Fill PSR to the halfway point in the sightglass. It is important after install that you start the car, move the wheel side to side a few times and recheck the level to ensure the system is full.

**We hope you enjoy your purchase! Reach out to us with any issues or concerns.**



**1-888-627-3736**



**@maperformance**



**support@maperformance.com**



**www.facebook.com/modernautomotive-performance/**

***MAP Performance***