

INSTALLATION GUIDE

CIVIC X DOWNPIPE



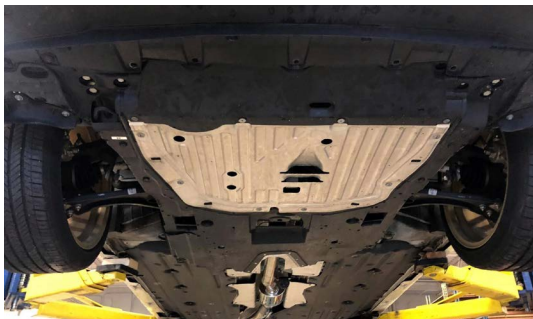
TOOLS REQUIRED:

Trim removal tool
5mm Allen socket
5.5mm socket
10mm socket
14mm socket
3/8ths Ratchet
Variety of swivels and extensions
3/8ths impact (recommended not necessary)
O2 Socket or 22mm Wrench

WHAT'S IN THE BOX:

(1) MAP Civic X Downpipe
(3) M10x1.25 x 42mm Stud
(3) M10x1.25 Flange Nut
(4) M10x1.25 Copper Flange Locking Nut
(1) (OPTIONAL) Honda Turbo Gasket
(3) (OPTIONAL) Heat Shield Clip Nuts
(3) (OPTIONAL) Heat Shield M6 Bolts

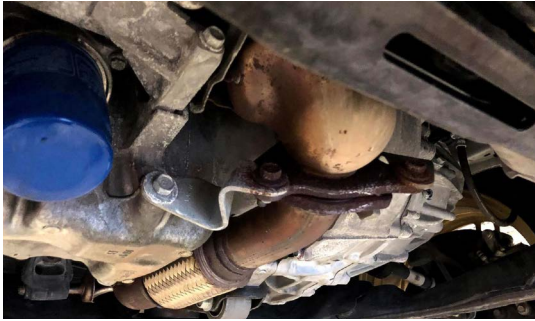
1. REMOVE UNDERTRAY (TRIM TOOL, 10MM, AND 5MM ALLEN SOCKET)



2A-B. REMOVE 3 DOWNPIPE TO FRONT PIPE NUTS (14MM)



3A-C. REMOVE 4 BRACKET BOLTS AND BRACKET HOLDING THE DOWNPIPE TO THE ENGINE BLOCK (14MM)



4A-B. MOVE UPTOP AND REMOVE THE INTAKE TUBE (2 5.5MM CLAMPS)



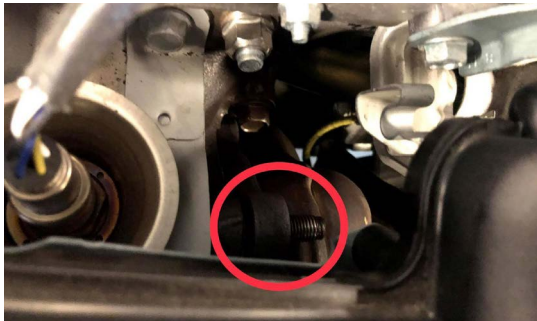
5A-B. NEXT YOU REMOVE THE 3 10MM BOLTS HOLDING THE DOWNPIPE HEAT SHIELD ON. ONE IS UNDER THE INTAKE TUBE AND THE OTHER 2 ARE LOWER DOWN IN THE FRONT. THEY SHOULD BE EASY TO SPOT, BUT WE WERE UNABLE TO GET A GOOD PICTURE OF THEM INSIDE THE CAR



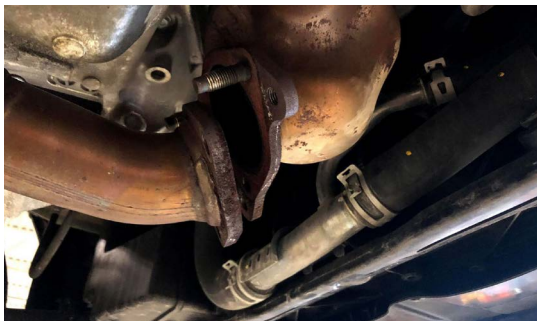
6A-B. DISCONNECT THE O2 SENSOR CONNECTORS



7. REMOVE 4 DOWNPIPE-TO-TURBO BOLTS AND NUTS (14MM) NOTE WE HAVE EXPERIENCED THESE STUDS HAVE A TENDENCY TO SNAP. THE USE OF IMPACT TOOLS HAS PROVED TO BE SUCCESSFUL IN NOT BREAKING THESE STUDS



8A-D WIGGLE THE STOCK DOWNPIPE OUT, THIS IS EASIEST FROM THE BOTTOM AS YOU WILL NEED TO MOVE THE FRONT PIPE OUT OF THE WAY IT MAY BE NEEDED TO UNHOOK THE FRONT PIPE FROM ITS HANGER TO GIVE YOU MORE ROOM TO MOVE



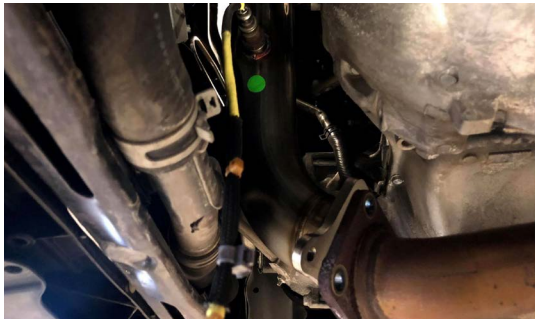
8A-D. CONTINUED



9. REMOVE O2 SENSOR AND INSTALL IT INTO YOUR NEW DOWNPIPE - IF YOU ARE USING OUR DOWNPIPE WITH A HEAT SHIELD, WAIT ON INSTALLING THE O2 SENSOR UNTIL YOU HAVE INSTALLED THE HEAT SHIELD



10A-D. INSTALL NEW DOWNPIPE, REPLACE THE USED NUTS WITH INCLUDED HARDWARE AND REINSTALL BOLTS. BE SURE THE GASKET IS IN PLACE AND ALL NUTS AND BOLTS ARE TIGHT



10A-D. CONTINUED



OPTIONAL HEAT SHIELD INSTALL:

10-1. INSTALL CLIP NUTS ONTO THE TABS



10-2. REMOVE O2 SENSOR BRACKET



10-3. SLIDE OEM HEAT SHIELD IN THE THROUGH THE BOTTOM

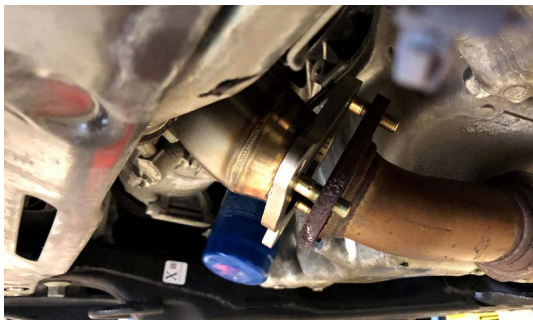
10-4. SECURE USING PROVIDED HARDWARE

10-5. REINSTALL O2 SENSOR

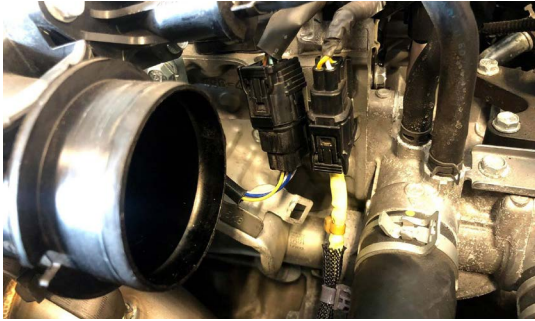
11. INSTALL INCLUDED DOWNPIPE STUDS

12. INSTALL INCLUDED DOWNPIPE NUTS

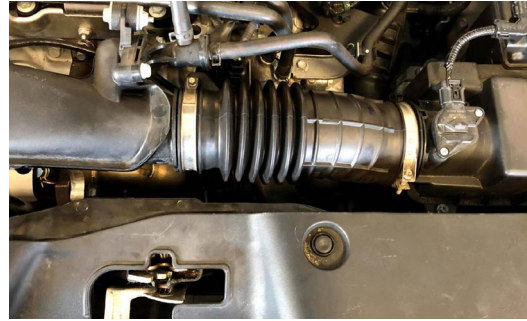
13. REINSTALL DOWNPIPE BRACKET AND BOLTS



14. RECONNECT O2 SENSOR CONNECTORS



15. REINSTALL INTAKE TUBE



16. REINSTALL LOWER SPLASH SHIELD



THANK YOU FOR CHOOSING MAPERFORMANCE!

If you have any problems or concerns during installation of this product, feel free to call or email us:

1-888-MAPERFORMANCE

sales@maperformance.com

Show us some photos! @maperformance / #maperformance