

# INSTALLATION GUIDE

## CIVIC X 1.5T EXHAUST INSTALL

**MAP**Performance.com

### TOOLS REQUIRED:

10mm Socket  
13mm Socket  
14mm Socket  
14mm box end wrench  
3/8" Ratchet

### WHAT'S IN THE BOX:

1x MAP Civic X Catback Front Connection  
1x MAP Civic X Catback Resonated Midpipe Front Section  
1x MAP Civic X Catback Resonated Midpipe Rear Section  
1x MAP Civic X Catback Exhaust Tip Section (Different options)  
2x 3" V-Band Clamps  
1x 3" 3 Bolt Gasket  
1x 3" Slip Fit Exhaust clamp



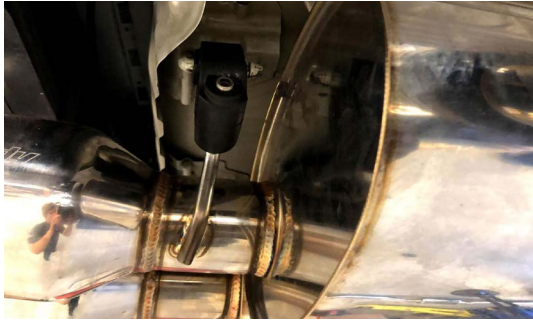
**1. REMOVE 4 REAR 10MM BOLTS ON THE SPLASH SHIELD, THIS WILL GIVE SOME SLACK ON THE SPLASH SHIELD WITHOUT TAKING IT COMPLETELY OFF**



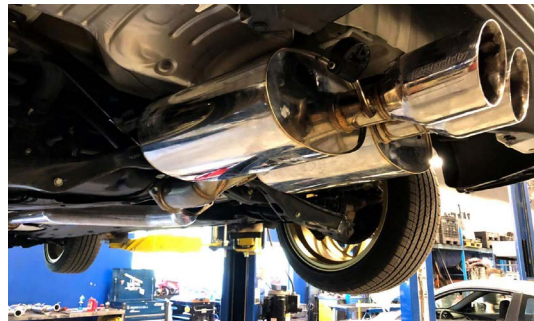
**2. REMOVE THE MUFFLER FROM THE RUBBER HANGERS, AND REMOVE THE MUFFLER**



**2. CONTINUED**



**2. CONTINUED**



**3. REMOVE 3 NUTS HOLDING THE FRONT PIPE TO THE AXLE BACK**



**3. CONTINUED**



**4. REMOVE REMAINING RUBBER HANGER AND REMOVE THE REST OF THE EXHAUST**

**5. INSTALL MID PIPE TO FRONT PIPE, BE SURE GASKET IS INSTALLED AND NUTS ARE TIGHTENED**



**5. CONTINUED**



**6. INSTALL RUBBER HANGER ONTO (FROM YOUR OLD AXLE BACK) ONTO YOUR NEW AXLE BACK RESONATED PORTION**

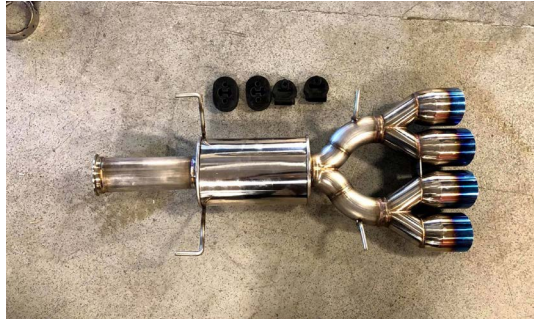




**7. INSTALL FRONT SECTION ONTO THE MIDPIPE FRONT CONNECTION SECURING IT LOOSELY**



**8. INSTALL RUBBER HANGERS ONTO MUFFLER SECTION (THESE SHOULD ALSO BE REMOVED FROM YOUR FACTORY EXHAUST)**



**9. INSTALL MUFFLER SECTION ONTO THE BODY**



**10. INSTALL SLIP CLAMP ONTO FRONT RESONATED SECTION**



**11. INSTALL REAR SECTION OF RESONATED PIPE ONTO MUFFLER LOOSELY WITH V-BAND CLAMP**



**11. CONTINUED**



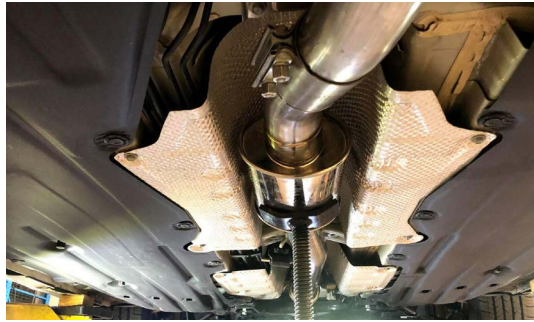
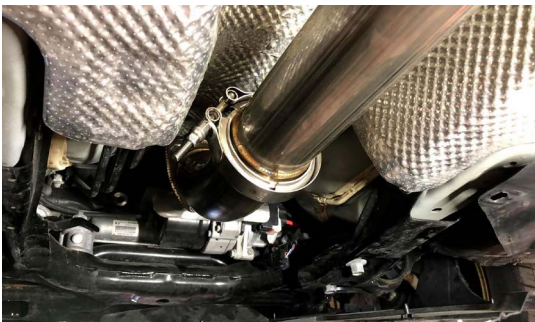
**12. SLIDE SLIP CLAMP ONTO REAR SECTION OF THE RESONATED PIPE, SNUG THE CLAMP UP BUT BE SURE IT CAN STILL MOVE SLIGHTLY**



**13. GO THROUGH AND CLOCK ALL SECTIONS OF THE CAT BACK ENSURING IT IS NOT BOUND UP OR HANGING IN THE WRONG POSITION. IT SHOULD SIT HOW IT APPEARS IN THE PICTURES**



**14. ONCE SATISFIED WITH FITMENT OF THE EXHAUST, GO THROUGH AND TIGHTEN BOTH V-BAND CLAMPS AND SLIP CLAMP. BE SURE AFTER TIGHTENING THAT THE EXHAUST IS STILL IN THE IDEAL POSITION**

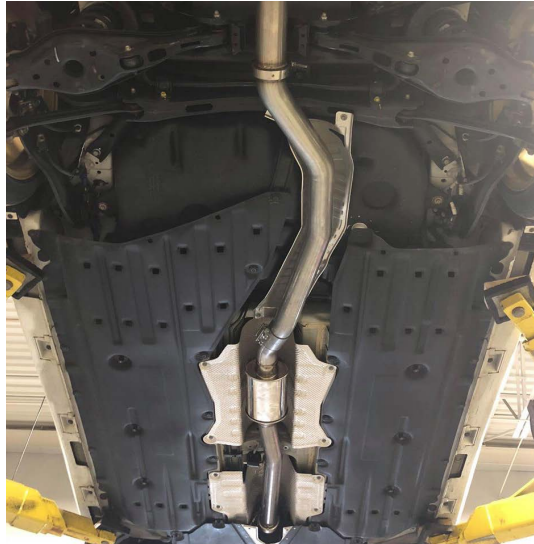


**15. REINSTALL THE 4 10MM BOLTS HOLDING THE SPLASH GUARD UP IN THE REAR**





## 16. START AND CHECK FOR LEAKS



---

**THANK YOU FOR CHOOSING MAPERFORMANCE!**

If you have any problems or concerns during installation of this product, feel free to call or email us:

1-888-MAPERFORMANCE

[ajohnson@maperformance.com](mailto:ajohnson@maperformance.com)

Show us some photos! [@maperformance](#) / [#maperformance](#)