

INSTALLATION GUIDE

EVO X HEAT SHIELD



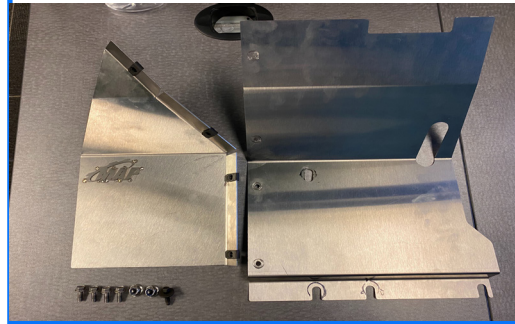
TOOLS REQUIRED:

- 10mm socket
- 14mm socket (3/8ths)
- 3/8ths ratchet

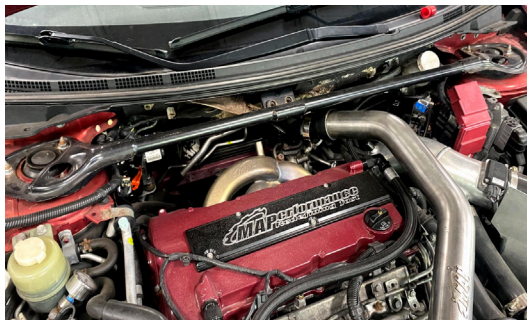


WHAT'S IN THE BOX:

- 2x MAP Stainless Heat Shields
- 4x m6 clip nuts
- 4x m6 10mm head stainless flange bolts
- 1x M8 stainless flange locking nut
- 2x M6 8mm head washer bolts



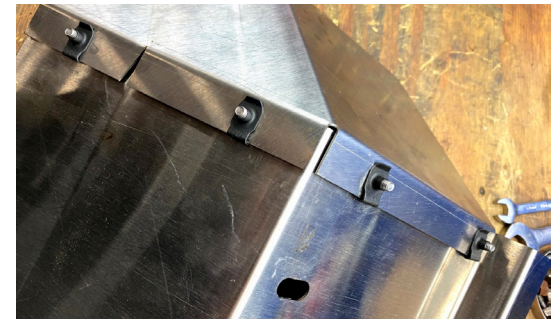
1. REMOVE STRUT BAR BY REMOVING 6 14MM NUTS AND 2 14MM BOLTS



2. REMOVE FACTORY HEAT SHIELD BY REMOVING 3 10MM BOLTS AND SLIDING HEAT SHIELD OUT



3. PUT MAP HEAT SHIELD TOGETHER BY USING INCLUDED HARDWARE (10MM BOLTS AND CLIP NUTS) TO ATTACH BOTH PIECES OF THE MAP HEATSHIELD TOGETHER



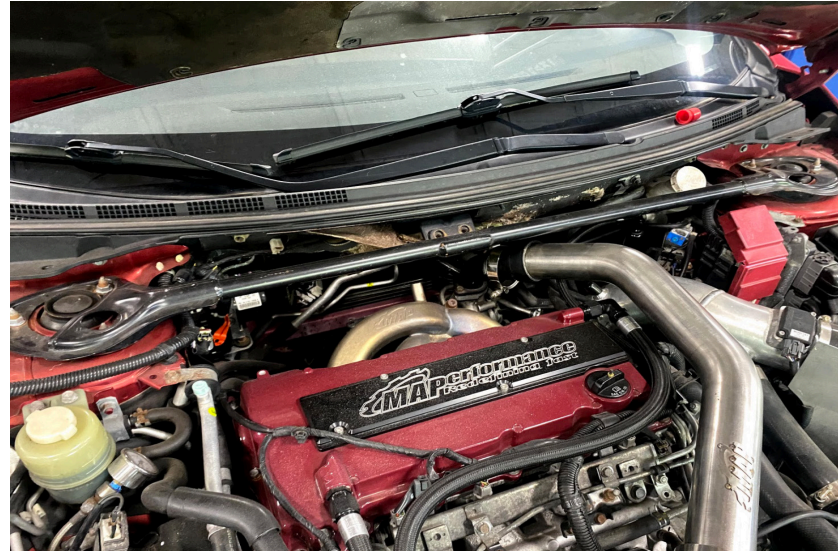
CURRENTLY, WE HAVE TESTED ASSEMBLING THIS OUT OF THE CAR AND THEN PUTTING IT IN THE CAR WITH THE FACTORY MANIFOLD, MAP INVESTMENT MANIFOLD, AND A FEW TUBULAR STOCK FRAME MANIFOLDS. YOU MAY HAVE TO ASSEMBLE HEAT SHIELD IN 2 PIECES INSIDE THE ENGINE BAY IF YOU CANNOT FIT IT PAST YOUR MANIFOLD RUNNERS.

4. SLIDE ASSEMBLED HEAT SHIELD PAST MANIFOLD AND ONTO THE EXPOSED STUDS ON THE FIREWALL TO HOLD IT IN PLACE

5. INSTALL NUTS AND BOLTS INCLUDED (2 NUTS 2 BOLTS) AS PICTURED



6. REINSTALL STRUT BAR



THANK YOU FOR CHOOSING MAPERFORMANCE!

If you have any problems or concerns during installation of this product, feel free to call or email us:

1-888-MAPERFORMANCE

ajohnson@maperformance.com

Show us some photos! [@maperformance](#) / [#maperformance](#)