

INSTALLATION GUIDE

EVO X TUBULAR EXHAUST MANIFOLD

*MAP*Performance.com

TOOLS REQUIRED:

14mm Socket
3/8" ratchet
Medium length extension
14mm Wrench
10mm Stud removal tool

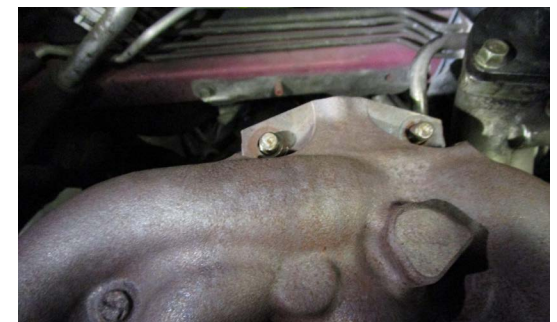
WHAT'S IN THE BOX:

1x MAP Tubular Exhaust manifold
1x MAP Cam angle sensor heat shield
1x MAP Cam angle sensor heat shield bolt

1. REMOVE ENGINE COVER, AND STRUT BAR. SET TO THE SIDE, REMOVE UPPER INTERCOOLER PIPE (NOT REQUIRED, JUST MAKES IT EASIER) REMOVE THE FACTORY HEAT SHIELD IF EQUIPPED



2. REMOVE TWO TURBO TO MANIFOLD NUTS, THEN TWO STUDS (EITHER A STUD EXTRACTOR FOR 8MM STUDS, OR THE "DOUBLE NUT" TECHNIQUE TO REMOVE. THESE CAN BE VERY DIFFICUL TO REMOVE, SO COATING IN PENETRATING OIL AHEAD OF TIME IS NOT A BAD IDEA). REMOVE TWO BOLTS ON THE TURBO TO MANIFOLD FLANGE



3. REMOVE THE TEN MANIFOLD TO HEAD NUTS AND LIFT THE MANIFOLD UP, AND TOWARDS THE FIREWALL TO REMOVE. REMOVE THE GASKET IF IT DID NOT COME OFF WITH THE MANIFOLD, AS YOU CAN RE-USE IT IN MOST CASES UNLESS DAMAGED. LIFT THE MANIFOLD UP, AND TOWARDS THE FIREWALL TO REMOVE

4. INSPECT THE MANIFOLD AND TURBO GASKET IF THEY DID NOT COME OFF WITH THE MANIFOLD, AS YOU CAN RE-USE IT IN MOST CASES UNLESS DAMAGED. REINSTALL THE GASKETS, AND SLIDE THE NEW TUBULAR MANIFOLD BACK IN THE SAME WAY THE STOCK ONE WAS REMOVED, BY TILTING AND SLIDING FROM THE REAR OF THE ENGINE BAY



5. MAKE SURE TURBO GASKET IS ON THE HOUSING AND INSTALL THE LOWER/INNER DRIVERS SIDE BOLT FROM THE MANIFOLD TO THE TURBO FIRST, AND SNUG THE BOLT DOWN, AS OTHERWISE YOU WILL NOT BE ABLE TO GET TO IT IN THE CAR EASILY WITH ALL OTHER BOLTS IN. INSTALL THE REMAINING BOLT, AND THE TWO STUDS IN THE MANIFOLD AND TIGHTEN THEM ALL DOWN



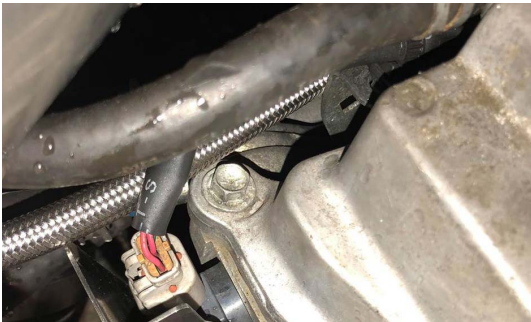
6. REINSTALL THE TEN MANIFOLD TO HEAD NUTS AND TIGHTEN THEM ALL



7. YOU CAN NOW INSTALL THE CAM ANGLE SENSOR HEAT SHIELD, BY REMOVING THE FACTORY LIFT HOOK AND USING THE SUPPLIED HARDWARE TO INSTALL THE SHIELD AS PICTURED



7. CONTINUED



8. START THE CAR AND CHECK FOR LEAKS, IF LEAK FREE REINSTALL THE ENGINE COVER AND STRUT TOWER BAR AND YOU ARE READY TO DRIVE!

THANK YOU FOR CHOOSING MAPERFORMANCE!

If you have any problems or concerns during installation of this product, feel free to call or email us:

1-888-MAPERFORMANCE

ajohnson@maperformance.com

Show us some photos! @maperformance / #maperformance