

INSTALLATION GUIDE

EVO X OIL COOLER KIT

MAPPerformance.com

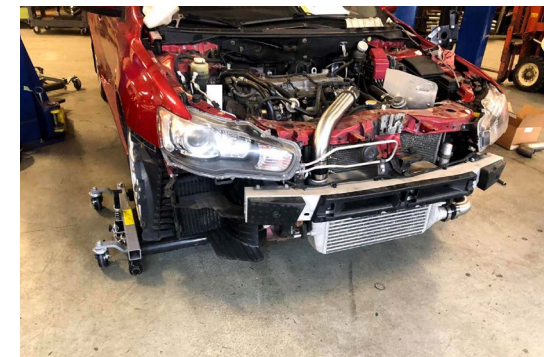
TOOLS REQUIRED:

- Trim clip removal tool
- 10mm socket
- 12mm socket
- 24mm socket
- Various extensions
- Swivel adapters
- 1/2 ratchet
- 3/8" ratchet

WHAT'S IN THE BOX:

- 1x MAP Setrab Cooler
- 3x 90° -10AN Fittings
- 1x Straight -10AN Fitting
- 2x M22 to -10 Banjo Fittings
- 2x M18 to -10 Banjo Fittings
- 1x Roll -10AN Black Braided Line
- 3x MAP Evox Oil Cooler Brackets
- 10x 1/4-20 Nuts
- 10x 1/4" Washers
- 8x 1/4-20 Screw 3/4" Long
- 2x 1/4-20 Screw 1" Long

1. REMOVE THE BUMPER COVER BY TAKING OUT THE UPPER SHROUD HELD IN BY TRIM CLIPS, THEN TWO 10MM SCREWS HOLDING IT TO THE CORE SUPPORT, THEN 2 SCREWS AND TWO TRIM CLIPS HOLDING TO THE FENDER LINER, REMOVING CLIPS HOLDING THE BUMPER TO THE UNDERSHROUD WILL BE REQUIRED IF STILL EQUIPPED.



2. REMOVE AIR RAM FROM FACTORY OIL COOLER ASSEMBLY



3. REMOVE BRACKET BOLTS HOLDING THE FACTORY OIL COOLER TO THE VEHICLE



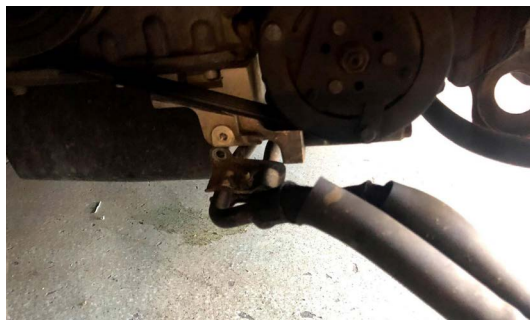
3. CONTINUED



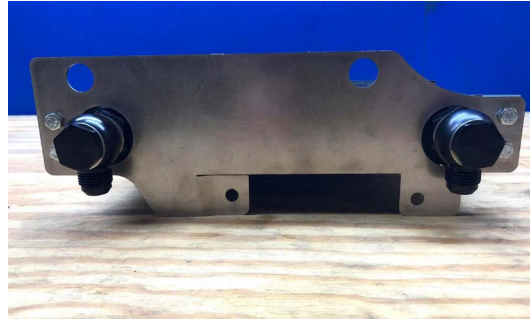
4. REMOVE TWO 24MM BANJO FITTINGS FROM THE OIL FILTER HOUSING, YOU WILL NEED TO USE A VARIETY OF EXTENSIONS AND SWIVELS TO ACHIEVE THIS. WE FOUND TO GET THE MOST REARWARD FITTING, IT'S EASIEST TO RUN THE EXTENSION THROUGH THE INTAKE MANIFOLD



5. REMOVE OIL COOLER LINES BRACKET FROM VEHICLE, THE FACTORY OIL COOLER SHOULD BE COMPLETELY FREE FROM VEHICLE. SET YOUR FACTORY COOLER AND LINES ASIDE



6. ATTACH INCLUDED BRACKETS TO YOUR NEW OIL COOLER AS SHOWN, MAKE SURE TO USE THE INCLUDED WASHERS TO SPACE THE BRACKET AWAY FROM THE COOLER. THE ORDER SHOULD BE, BOLT, BRACKET, WASHER, OIL COOLED, NUT. THIS WILL ENSURE THE BEST POSSIBLE FITMENT



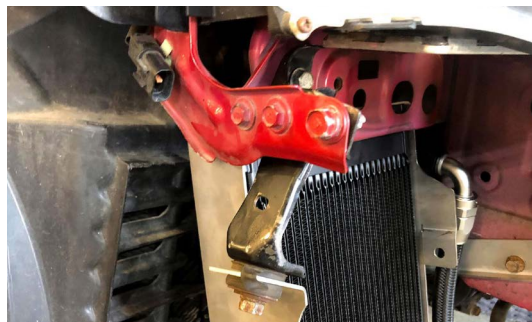
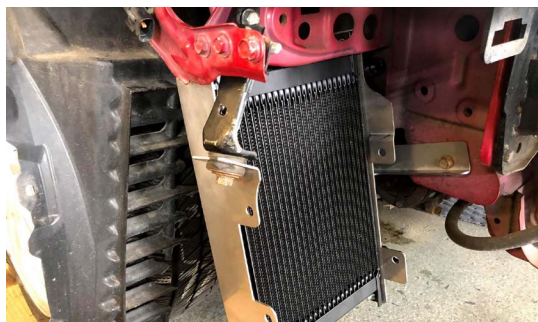
7. ATTACH THE BRACKET PICTURED TO THE CHASSIS



8. REUSE THE RUBBER GROMMETS FROM YOUR OLD OIL COOLER (OR REPLACE), INSTALL THEM INTO THE BRACKET AS SHOWN



9. ATTACH YOUR NEW MAP OIL COOLER ASSEMBLY TO THE VEHICLE



10. MEASURE YOUR FACTORY OIL COOLER LINES FOR REFERENCE, AND INSTALL THE BANJO TO -10 FITTINGS ON THE BLOCK. NOW ASSEMBLE ONE OF THE 90* FITTINGS ON THE END OF THE HOSE, ROUTE THAT HOSE AS IT WILL RUN TO VERIFY LENGTH TO THE COOLER. CUT AND ASSEMBLE LINE, AND REPEAT FOR SECOND LINE. NOTE, THE DRIVERS SIDE PORT WILL USE THE STRAIGHT FITTING ON THE BLOCK.



11. INSTALL YOUR NEW HOSES FOLLOWING THE FACTORY ROUTING PATH.



12. START AND CHECK FOR LEAKS

13. RE INSTALL AIR DUCTS

14. REINSTALL BUMPER AND UPPER SHROUD



THANK YOU FOR CHOOSING MAPERFORMANCE!

If you have any problems or concerns during installation of this product, feel free to call or email us:

1-888-MAPERFORMANCE

sales@maperformance.com

Show us some photos! @maperformance / #maperformance