

INSTALLATION GUIDE

EVO X CLUTCH MASTER CYLINDER



TOOLS REQUIRED:

6mm allen socket,
10mm Socket
12mm Socket
13mm Socket
3/8th's ratchet
Various 3/8ths extensions
10mm line wrench
11mm line wrench
Needle nose pliers
Flat head (various)
21mm socket and either breaker
bar or impact (not pictured)
Die grinder and sharp carbide bit
12mm open end wrench
14mm open end wrench

WHAT'S IN THE BOX:

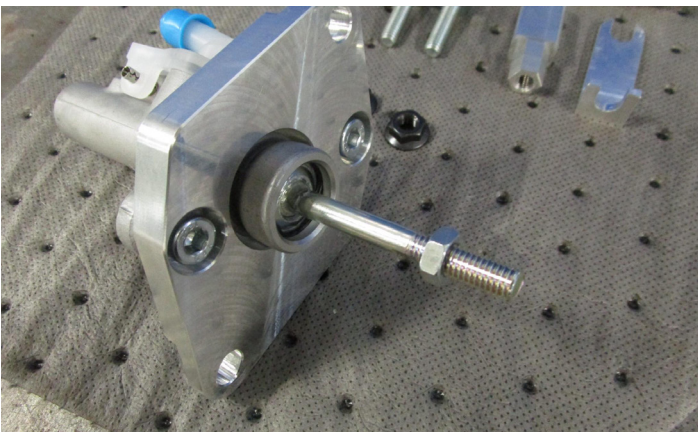
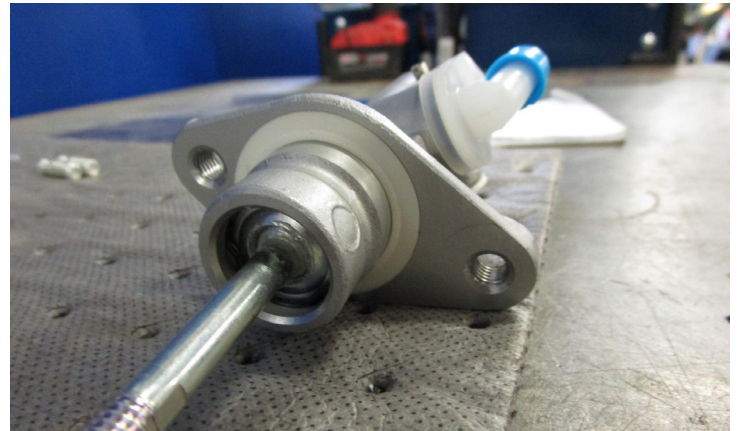
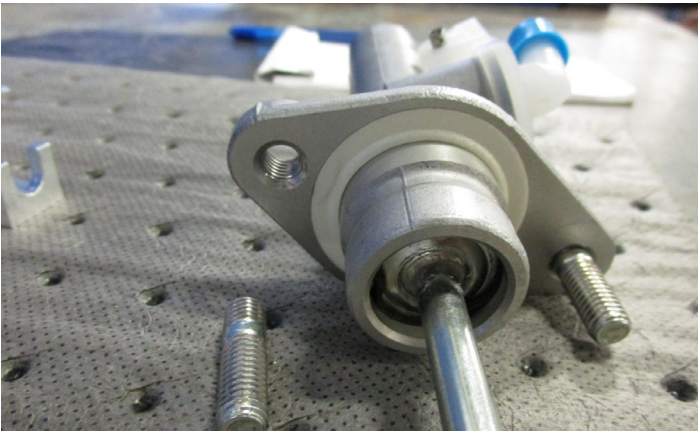
1x Evo 8/9 Master Cylinder
1x MAP Adapter Plate
1x Pedal adapter (Two pieces)
2x M8x1.25x12 Bolts
(Pre-revision has one long bolt, one short bolt)
2x M8x1.25x30 Bolts
2x M8x1.25 Flange Nuts
2x Banjo Bolts
4x Crush Washers
1x Braided clutch line



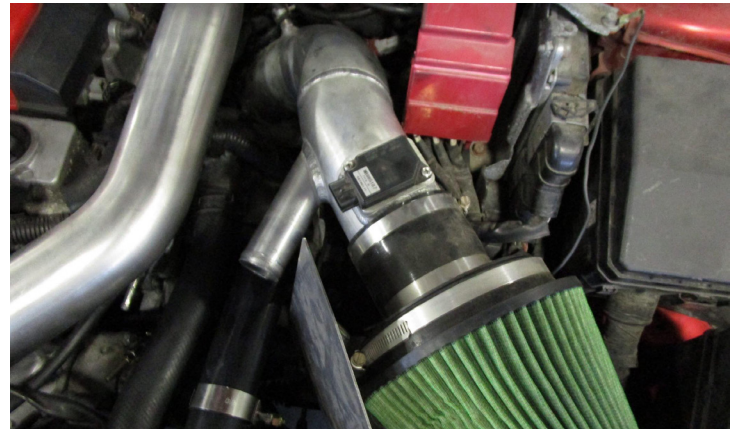
1. ASSEMBLE THE CMC UPGRADE KIT OUT OF THE CAR, START BY REMOVING THE FACTORY CLEVIS AS YOU WILL NOT NEED THIS.



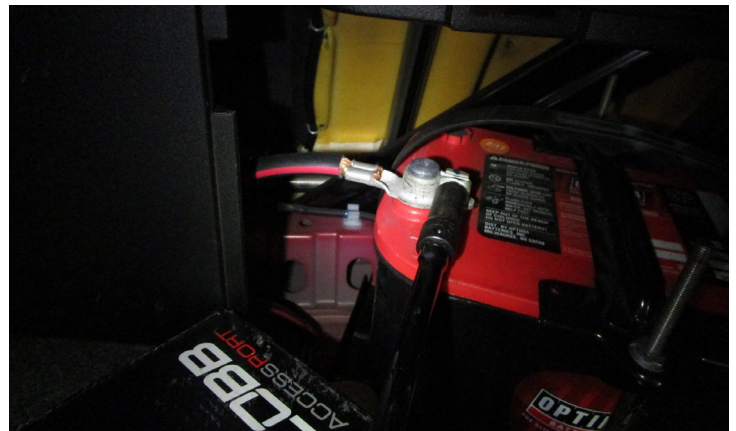
2A-C. REMOVE THE FACTORY M8 STUDS ON THE MASTER CYLINDER USING EITHER A STUD REMOVAL TOOL OR TWO M8X1.25 NUTS. INSTALL THE CMC TO THE ADAPTER UTILIZING THE 2 SHORTER M8 SCREWS



3A-C. PLACE VEHICLE ON A LIFT, OR FOUR JACK STANDS. REMOVE THE STRUT TOWER BAR, INTAKE AND UPPER INTERCOOLER PIPING, AND SET TO THE SIDE.



4. REMOVE THE NEGATIVE THEN POSITIVE BATTERY TERMINAL (BATTERY LOCATED IN TRUNK OF CAR)



5. REMOVE THE BOOST CONTROL SOLENOID LINES AND ASSEMBLY, SET TO THE SIDE



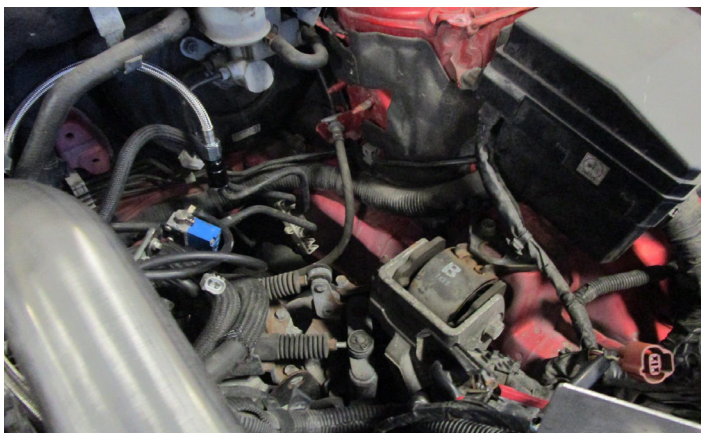
6. REMOVE POSITIVE CABLES FROM TERMINAL POST



7. UNBOLT ECU BRACKET, AND PULL ASSEMBLY TO THE SIDE WHILE STILL CONNECTED.



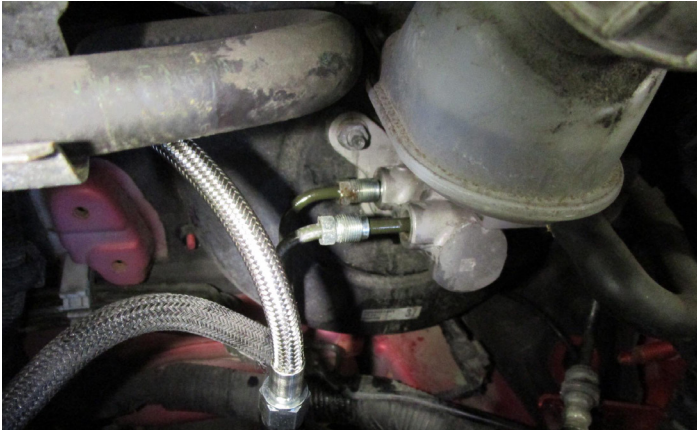
8A-B. REMOVE BRACKET TRAY, 3 BOLTS WILL HOLD IT IN, SET TO THE SIDE.



9. REMOVE CLUTCH LINE RETAINING CLIP, TAP WITH A FLATHEAD SCREWDRIVER AND A Mallet TO UNSEIZE THE CLIP, REMOVE WITH A PLIERS OR CHANNEL LOCKS.



**10. REMOVE BRAKE LINES FROM BRAKE MASTER CYLINDER,
USE A 10MM LINE WRENCH TO PREVENT ROUNDING THE NUTS,**



11. REMOVE VACUUM LINE FROM BOOSTER.



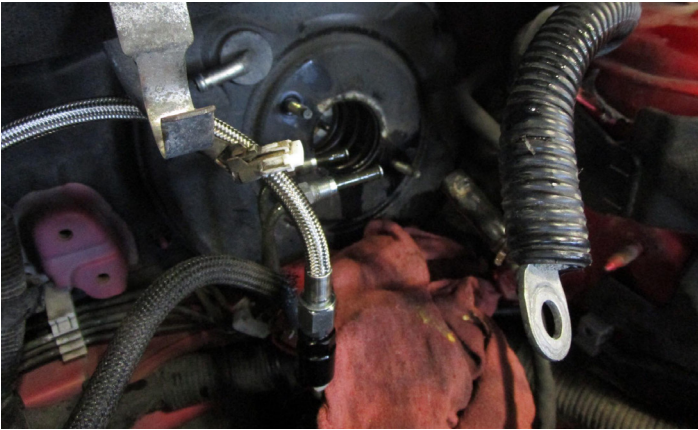
**12. REMOVE CLUTCH MASTER FLUID FEED LINE FROM
BRAKE MASTER CYLINDER.**



**13. REMOVE COTTER PIN AND PIN FROM THE BRAKE PEDAL AND MASTER CYLINDER CLEVIS, AND THE FOUR NUTS
AROUND THE PEDAL HOLING IN THE BOOSTER.**



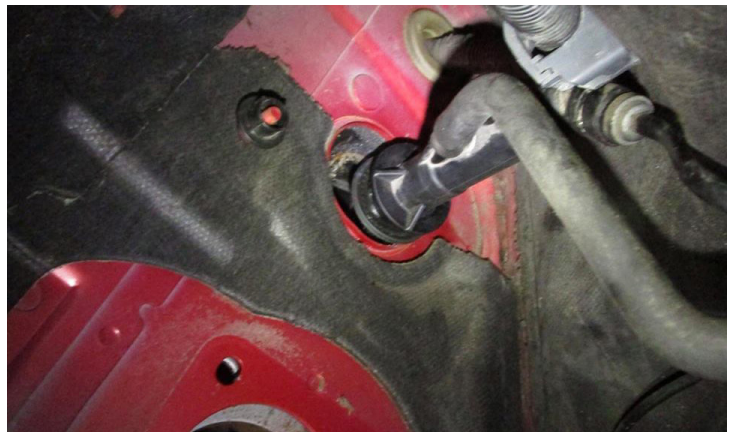
14. REMOVE LEVEL SENSOR CONNECTOR AND THE TWO NUTS HOLDING THE MASTER TO THE BOOSTER, PULL MASTER, AND THEN BOOSTER FROM THE CAR.



15. REMOVE CLEVIS ON CLUTCH MASTER CYLINDER TO CLUTCH PEDAL, A FLATHEAD SCREWDRIVER AND LIGHT FORCE WILL POP IT OFF.



16A-B. TWIST THE MASTER CYLINDER COUNTER CLOCKWISE AND PULL TO REMOVE



17A-B. REMOVE MODULE FROM LEFT OF CLUTCH PEDAL TO GAIN ACCESS TO FIREWALL.



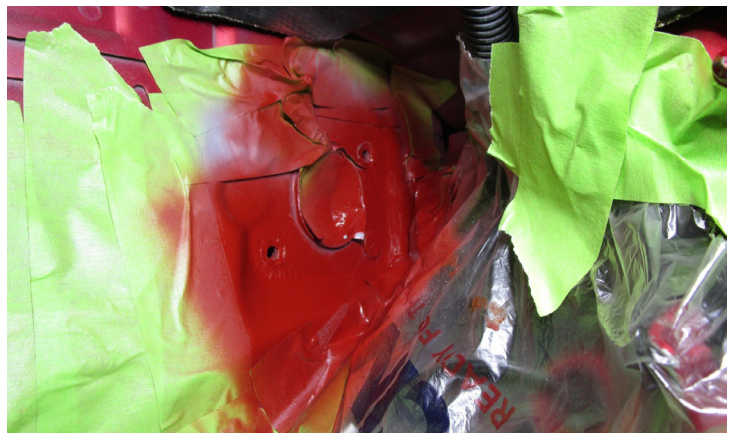
18A-B. CONTINUED



19A-D. UTILIZING A SHARP CARBIDE BURR GRINDER REMOVE THE UPPER RIGHT, AND LOWER LEFT STUDS FROM THE BACK SIDE. LEAVING ROUGHLY 9MM HOLES TO PUT THE NEW BOLTS THROUGH.



20A-D. AFTER GRINDING, WE RECOMMEND PRIMING AND PAINTING THE AREA TO PREVENT ANY CORROSION IN THE FUTURE. LET DRY.



21. WHILE DRYING, INSTALL THE LINES FOR THE FLUID FEED, AND SLAVE CYLINDER ONTO MASTER, LEAVE THE BANJO BOLT LOOSE AS YOU WILL HAVE TO POSITION IT TO CLEAR THE BOOSTER ONCE ASSEMBLED IN THE CAR.



22. FOR THIS STEP, A SECOND SET OF HANDS WILL MAKE IT MUCH EASIER. INSTALL THE MASTER AND MOUNTING PLATE TO THE FIREWALL, YOU WILL USE THE TWO LONGER M10 BOLTS, AND 2 M10 FLANGE NUTS TO ASSEMBLE. TIGHTEN ONCE INSTALLED.



23. WITH THE PEDAL ALL THE WAY OUT, SLIP THE BALL END OF THE ADAPTER CLEVIS OVER THE BALL ON THE PEDAL. MAY NEED TO WIGGLE THE ADAPTER TO GET IT ALL TO SEAT RIGHT. SECONDARY LOCKING PIN NOT NEEDED



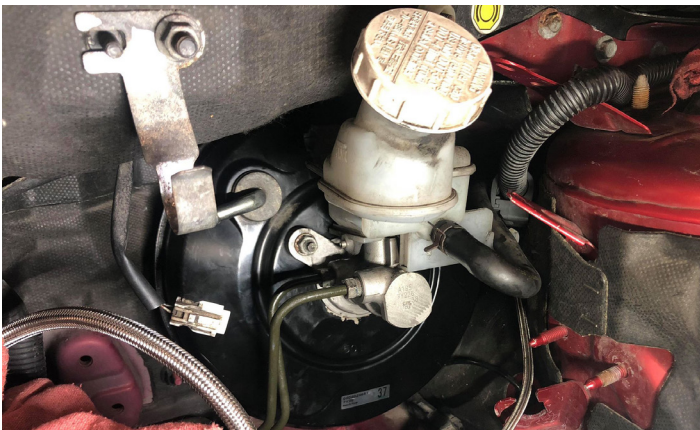
24. REINSTALL FIREWALL HEAT SHIELD, AND CLOCK SLAVE LINE AS PICTURED. TIGHTEN DOWN THE BANJO BOLT.



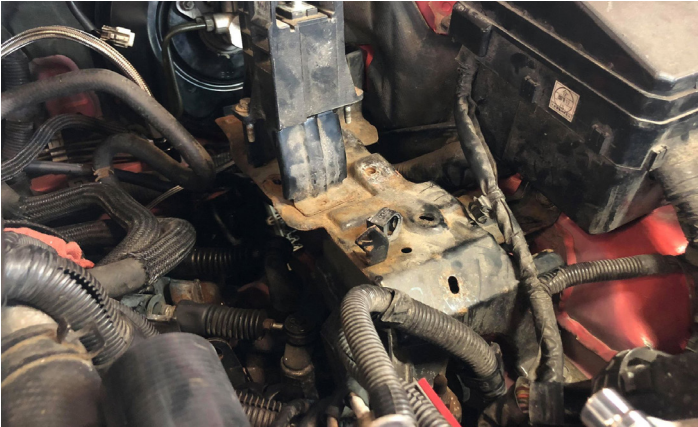
25. SLIDE BOOSTER BACK INTO CAR, REINSTALL THE 4 NUTS, AND THE REMOVED PIN AND COTTER PIN.



26. INSTALL THE MASTER BACK ONTO THE BOOSTER, ATTACH FEED LINE TO CLUTCH MASTER AND BRAKE LINES TO MASTER, THEN PLUG IN LEVEL SENSOR.



27. REINSTALL BRACKET FOR BATTERY TERMINAL, AND BOOST CONTROL SOLENOID.



28. REINSTALL BOOST CONTROL SOLENOID AND PLUMB LINES BACK IN



29. REINSTALL POSITIVE BATTERY CABLES AND TIGHTEN DOWN.



30. INSTALL SLAVE CYLINDER LINE WITH NEW BANJO BOLT AND TIGHTEN DOWN.



31. BLEED BRAKES AND CLUTCH, CHECK FOR LEAKS IN SYSTEM.

32. ASSEMBLE INTAKE, UPPER INTERCOOLER PIPE, AND STRUT BAR BACK ONTO CAR.



33. REINSTALL MODULE TO LEFT OF CLUTCH PEDAL



34. INSTALL BATTERY CABLES BACK TO BATTERY.



35. TEST DRIVE AND ADJUST CLUTCH PEDAL IF NEED BE!

THANK YOU FOR CHOOSING MAPERFORMANCE!

If you have any problems or concerns during installation of this product, feel free to call or email us:

1-888-MAPERFORMANCE

support@maperformance.com

Show us some photos! @maperformance / #maperformance