



# STEEDA

## 2013-2014 Ford Fusion EcoBoost

### Cold Air Intake

555-3174



#### Tools Needed:

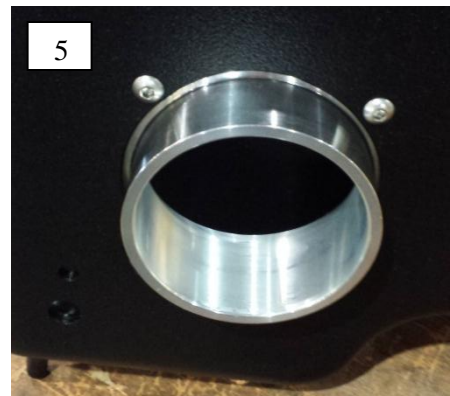
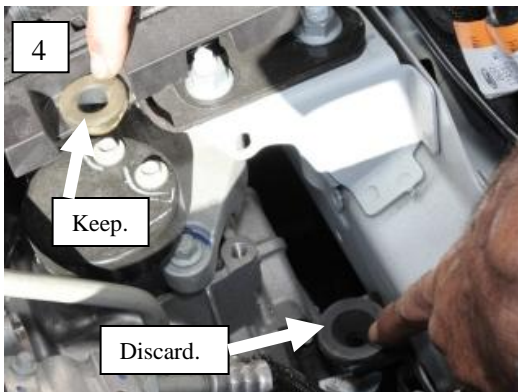
1. flat head screwdriver
2. 8mm and 10mm socket, and ¼" drive or 3/8" drive ratchet
3. 1/8" and 4mm allen wrenches

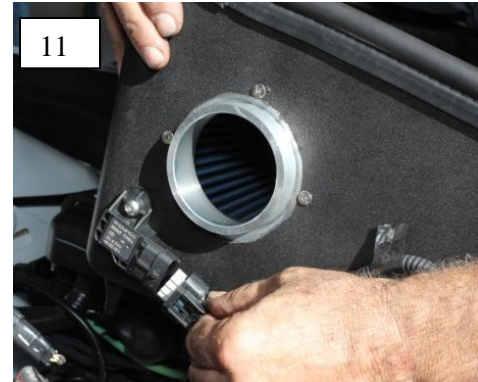
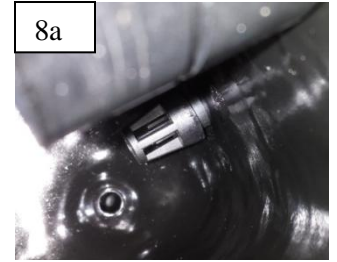
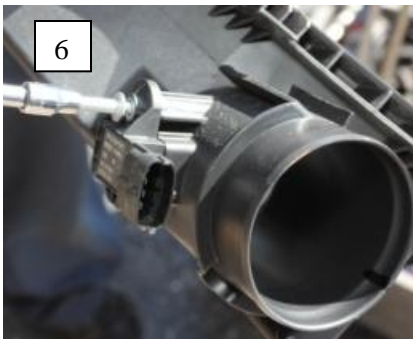
#### Removal of the stock intake assembly:

1. Raise the hood.
2. Disconnect the IAT sensor and remove sensor harness routing from air box.
3. Remove air box lid and filter.
4. Using an 8mm socket, remove the two bolts securing the cold air duct to the car. Gently pull up on the air box to remove it and the duct from its rubber grommets.
5. Remove and discard the lower rubber grommet from the car. See figure 4.

#### Installation of Steeda Cold Air Intake:

6. Install the velocity stack onto the Steeda air box. Use the supplied 10-32 x ½" screws. Start all four before tightening any of them to ensure correct alignment. See figure 5.





### **Installation of Steeda Cold Air Intake:**

**See attached addendum for IAT sensor instructions.**

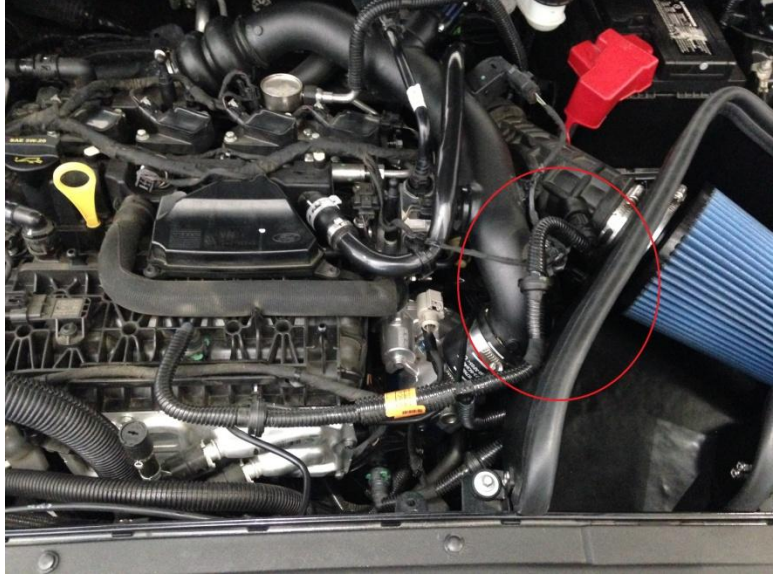
Note: The hole on the bottom of the box is intended as a drain, and will not require a plug.

7. Install the supplied 5/8" rubber grommets into the L-brackets. See figure 9.
8. Install the mounting brackets onto the Steeda air box. The base (grommet area) of the bracket should be facing towards the bottom of the box. Use the supplied 10-32 x 1/2" bolts and lock nuts. Insert the bolts in from the inside of the air box with the nuts on the outside of the air box. Do not tighten them completely at this time. See figure 9 & 10.
9. Install the air filter over the velocity stack. Secure it in place with the provided hose clamp.
10. Install the edge molding onto the Steeda air box. Difficult corners may require the use of a rubber mallet to get the trim all the way down. If the trim is loose, it can be tightened by squeezing it lightly with pliers.
11. Install the Steeda air box into the car. Reconnect the IAT sensor before getting the box all the way in. Make sure the peg on the bottom of the box lines up with the rear rubber grommet. The opening of the air box will line up with the factory air duct. See figure 11.
12. Reinstall the 2 factory bolts into the L-brackets at the front of the air box and tighten. Be sure to start both of them by hand before tightening completely. Tighten the four lock nuts securing the brackets at this time.
13. Install the intake hose onto the velocity stack and tighten the band clamp.
14. Re-check all clamps, bolts and the sensor connector before starting your engine.

## 2015+ Fusion model addendum

### **For all 2015+ 1.5L engines the vacuum line will require re-routing**

1. Remove the engine cover to gain easier access to the vacuum line.
2. Remove the vacuum line from the vehicle, until you have followed the above steps 7-13. Once these steps are complete re-install the vacuum line, twisting the end which clips onto the intake tube as shown.
3. Re-install your engine cover and continue on with step 13 of the above instructions.



**Warning: Not approved for sale in California or states that require a California E.O. #. This part has been designed and is intended for off-road application only. Installation of this part on a vehicle that is driven on public roads may violate U.S. and Canadian laws and regulations.**

**Note: Federal and several state and provincial laws prohibit the removal, modification or rendering inoperative of any part that affects emissions or safety on motor vehicles used on public streets or highways. Steeda Autosports assumes no liability for any violations arising out of any federal, state or provincial emissions or safety requirements on motor vehicles arising out of the customer's modifications and/or use of Steeda products. It is the responsibility of the customer to determine if their modified vehicle complies with applicable laws.**

**This limited warranty is the only express warranty applicable to Steeda Autosports products. Other rights may arise or vary from state to state in the United States. Steeda is not responsible for any time for which you may lose the use of your vehicle, any inconvenience you might be caused, the loss of your transportation or any part thereof, or any other incidental or consequential damages you may have.**