

INSTALLATION GUIDE

SUBARU WRX MUFFLER DELETE

*MA*Performance.com

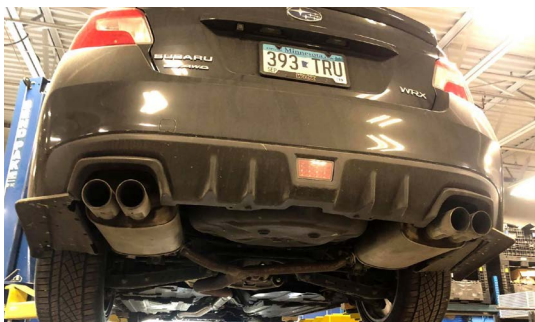
TOOLS REQUIRED:

14mm Shallow socket - 3/8"
3/8" Ratchet
14mm wrench
3/8" torque wrench

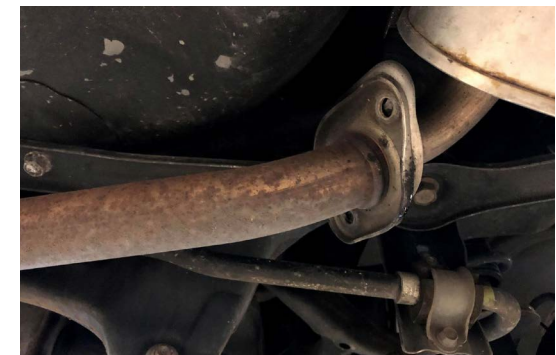
WHAT'S IN THE BOX:

1x Left Exhaust Tip Assembly
1x Right Exhaust Tip Assembly

**1. PLACE CAR ON LIFT, OR JACK UP REAR.
CAN BE DONE ON THE GROUND BUT A LITTLE
MORE SPACE IS NICE TO HAVE**



**2. START REMOVING THE 2 14MM BOLTS HOLDING THE FACTORY MUFFLERS TO THE Y PIPE
DO THIS TO BOTH MUFFLERS**



3. REMOVE THE 2 RUBBER HANGERS HOLDING THE MUFFLERS UP. THEY MAY REQUIRE SOME SILICONE LUBRICANT TO MAKE REMOVAL EASIER.



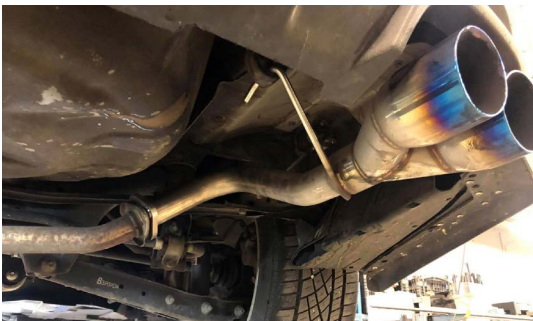
4. REMOVE THE MUFFLERS FROM THE VEHICLE (BOTH SIDES)



5. INSTALL THE RUBBER HANGERS ONTO MAP MUFFLER DELETES



6: INSTALL MUFFLER DELETES INTO THE VEHICLE AND HANG THEM WITH THE RUBBER HANGERS, SILICONE LUBRICANT WILL MAKE THIS MUCH EASIER



7. INSTALL NEW GASKETS BETWEEN THE MUFFLER AND FACTORY Y PIPE



8. REINSTALL 14MM HARDWARE SECURING THE MUFFLERS



9. START AND CHECK FOR LEAKS

THANK YOU FOR CHOOSING MAPERFORMANCE!

If you have any problems or concerns during installation of this product, feel free to call or email us:

1-888-MAPERFORMANCE

sales@maperformance.com

Show us some photos! [@maperformance](#) / [#maperformance](#)