

INSTALLATION GUIDE

WRX EL HEADER



TOOLS REQUIRED:

- 10mm socket 3/8ths drive
- 12mm socket 3/8ths drive
- 14mm socket 3/8ths drive
- 17mm combination wrench
- 3/8ths ratchet
- Pliers

WHAT'S IN THE BOX:

- 1 - MAP EJ25 Header
- 10 - M10x1.25 Flanged Nuts
- 3 - Grimmspeed Gaskets (Optional)



1. REMOVE UNDERTRAY



2. REMOVE METAL UNDERTRAY



3. DISCONNECT O2 SENSOR CONNECTORS



4. REMOVE DOWN PIPE COMPLETELY BUT UNBOLTING IT FROM TURBO AND THE REST OF THE EXHAUST



5. REMOVE INTAKE FROM PLASTIC INTAKE COLLECTOR



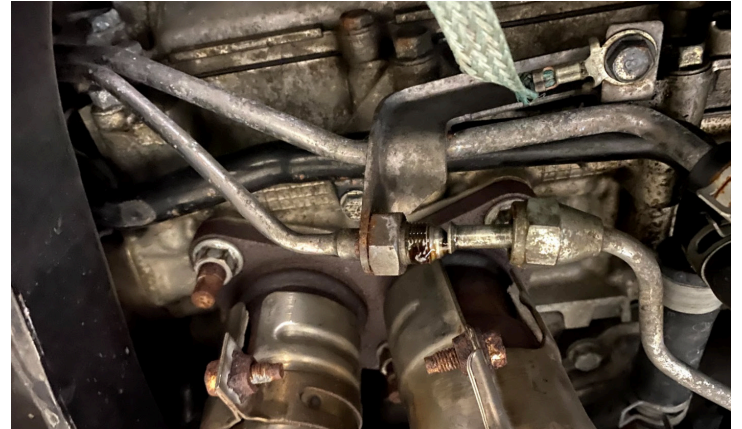
6. REMOVE INTAKE COLLECTOR FROM TURBO AND MOVE TO THE SIDE



7. REMOVE 2 12MM BOLTS HOLDING THE CHARGE INLET PIPE TO THE TURBO



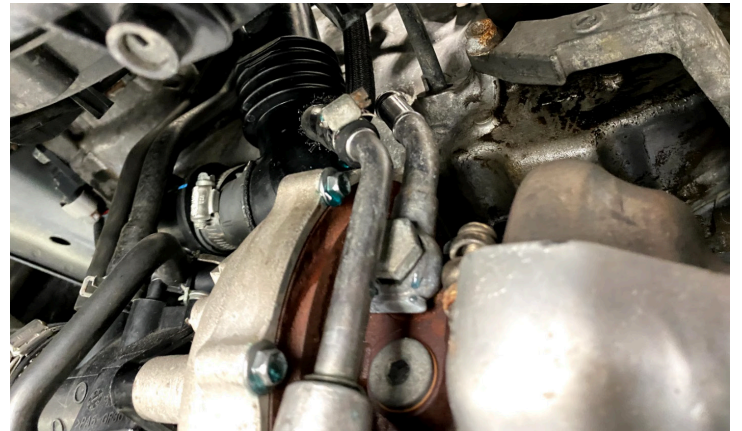
8. REMOVE TURBO FEED LINE AT THE CONNECTION PICTURED (17MM)



9. REMOVE OIL RETURN RESERVOIR



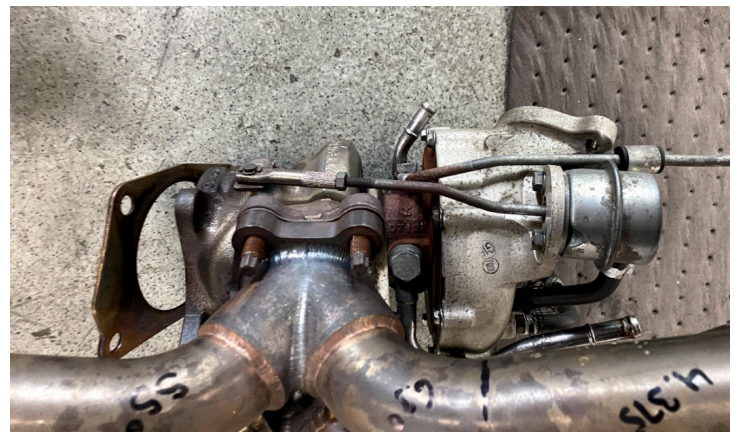
10. DISCONNECT COOLANT LINE FROM TURBO



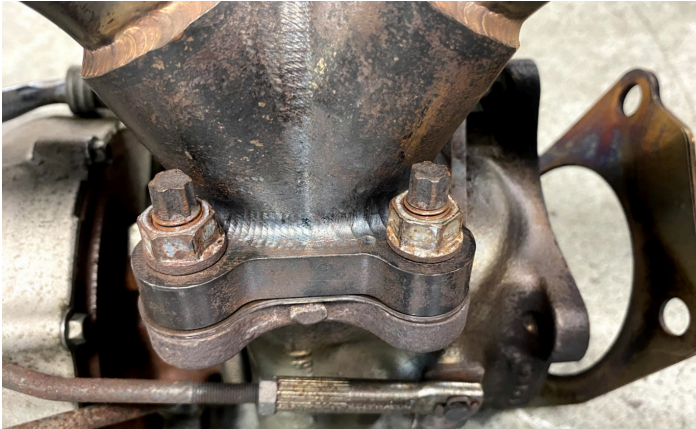
11. REMOVE ENTIRE TURBO AND MANIFOLD ASSEMBLY FROM ENGINE BY REMOVING 6 14MM NUTS FROM THE STUDS HOLDING IT IN PLACE



12. REMOVE 4 14MM NUTS HOLDING THE TURBO ONTO THE MANIFOLD



13. INSTALL TURBO ONTO THE MAP HEADER, REUSING THE NUTS YOU REMOVED OFF FACTORY MANIFOLD, YOU NEED TO USE A COMBINATION WRENCH TO TIGHTEN THESE NUTS



14. INSTALL MAP HEADER ASSEMBLY ONTO THE ENGINE AND SECURE WITH THE 6 14MM NUTS YOU REMOVED EARLIER



15. CONNECT COOLANT LINES TO TURBO AND SECURE WITH CLAMPS



16. INSTALL OIL RETURN RESERVOIR AND SECURE WITH 10MM BOLTS



17. RECONNECT OIL FEED LINE AND BE SURE TO TIGHTEN



18. REINSTALL INLET CHARGE PIPE ONTO THE TURBO



19. REINSTALL INTAKE COLLECTOR



20. REINSTALL DOWNPIPE TO THE ENTIRE EXHAUST SYSTEM



BE SURE TO INSTALL ALL THE HARDWARE BEFORE TIGHTENING THE DOWNPIPE, THE FACTORY BRACKETS THAT INSTALL WITH THE DOWNPIPE ARE SLOTTED TO ASSIST WITH FITMENT, YOU WILL HAVE DIFFICULTY INSTALLING IF YOU DO NOT PARTIALLY THREAD ALL HARDWARE IN BEFORE TIGHTENING

21. RECONNECT O2 SENSOR CONNECTOR



22. REINSTALL BOTH UNDERTRAYS



23. START AND CHECK FOR ANY LEAKS



THANK YOU FOR CHOOSING MAPERFORMANCE!

If you have any problems or concerns during installation of this product, feel free to call or email us:

1-888-MAPERFORMANCE
support@maperformance.com