

#PI-FM  
Fish mount, iron

Due to the hand-carving of each piece, small variances in shape and size are to be expected.

SIZE **A** DWG. NO. PI-FM Fish mount iron cm

REV. **A**

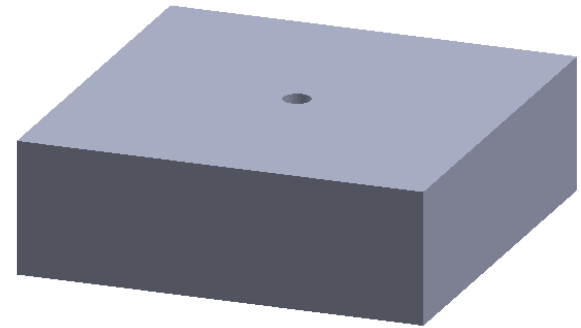
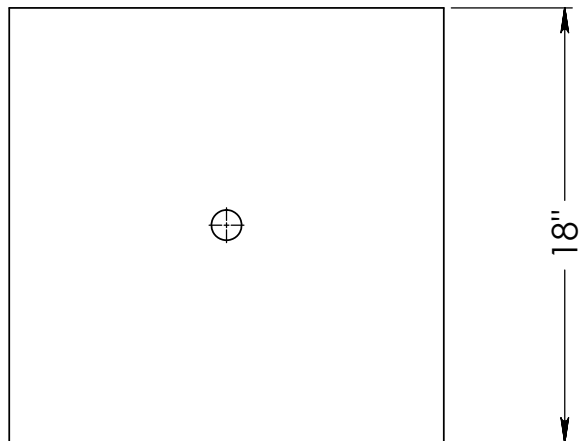
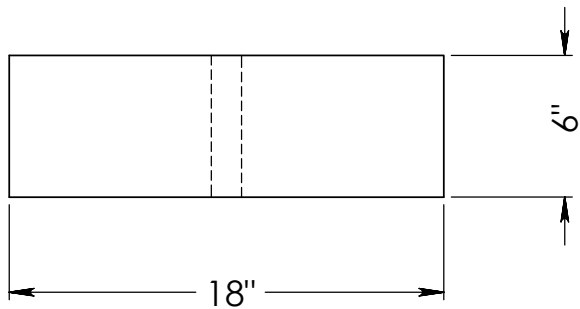
MATERIAL

WEIGHT: lbs SHEET 1 OF 1

FINISH Powder coated

©2010 Stone Forest, Inc.

DO NOT SCALE DRAWING



Fish Mount Stone

Due to the hand-carving of each piece, small variances in shape and size are to be expected.

SIZE **A** DWG. NO. Fish mount stone

REV. **A**

WEIGHT: lbs SHEET 1 OF 1

©2010 Stone Forest, Inc.

DO NOT SCALE DRAWING