

WALZ CAPS - TEMPLATE - 3 PANEL CAP

Trim Line (Full bleed must extend beyond)
 Elastic Region
 Bleed (Art must extend to this area)

We recommend the following value for a true black (CMYK: C=75% M=68% Y=68% K=90%) but will honor whatever black you designate in the file.

Colors are subject to variation on product and may not match 100%. If PMS colors are provided they will be matched as close as possible, however we do not guarantee exact PMS matching.

Indicate Pantones: (Fill box **and** type ID)

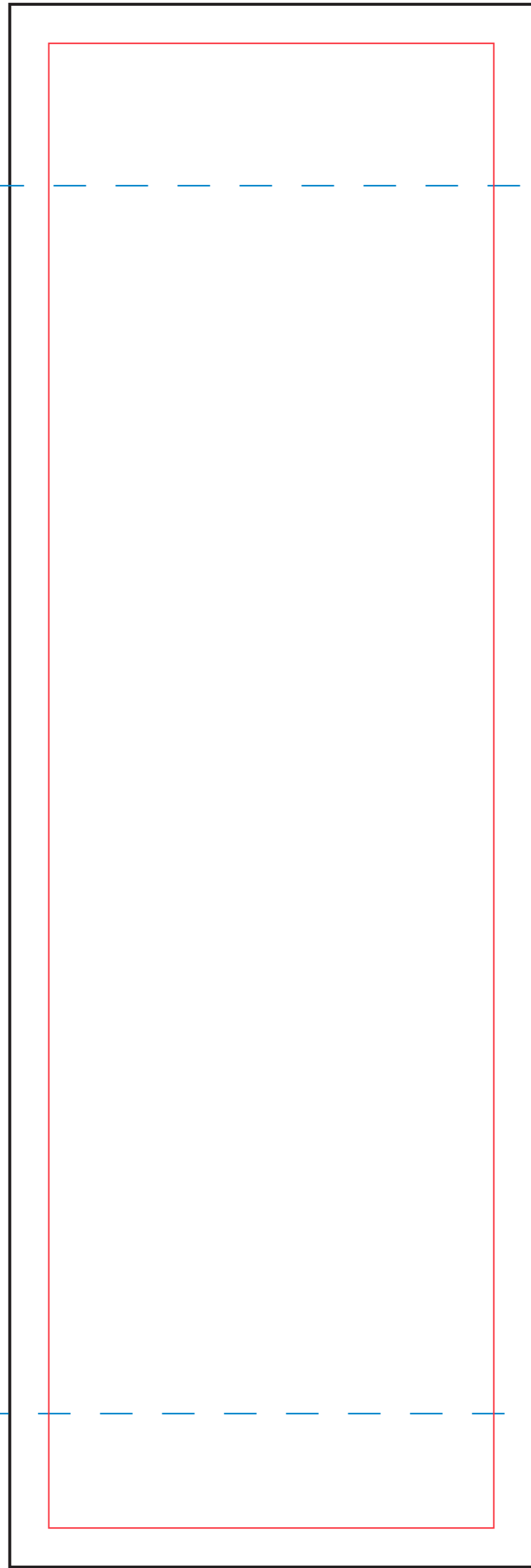
_ID?	_ID?	_ID?	_ID?	_ID?

MIDDLE PANEL (BACK)

This is the elastic region on back of cap. You may encounter legibility issues near here.



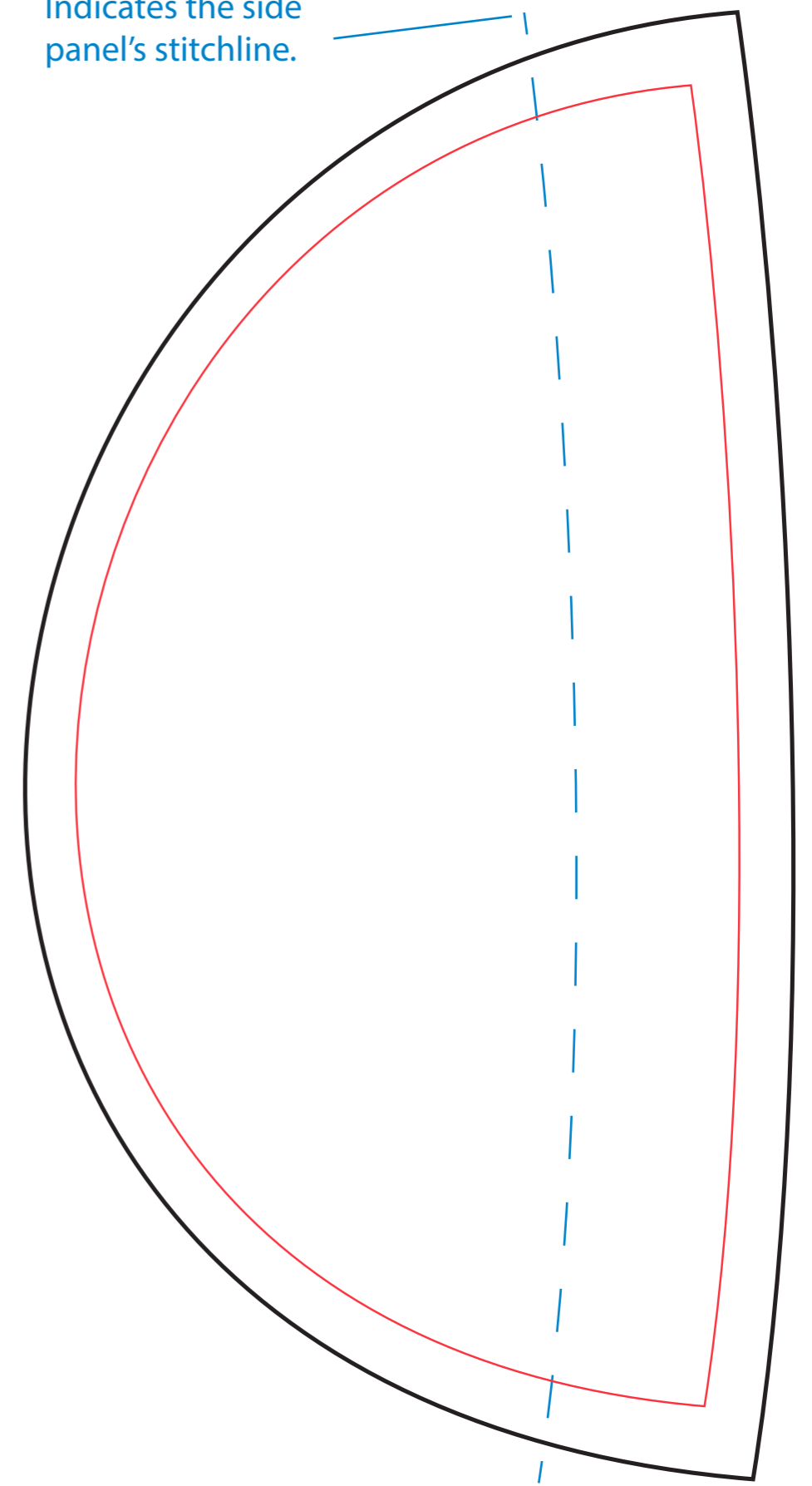
WALZ



Indicates the middle panel's front stitchline.

LEFT SIDE PANEL

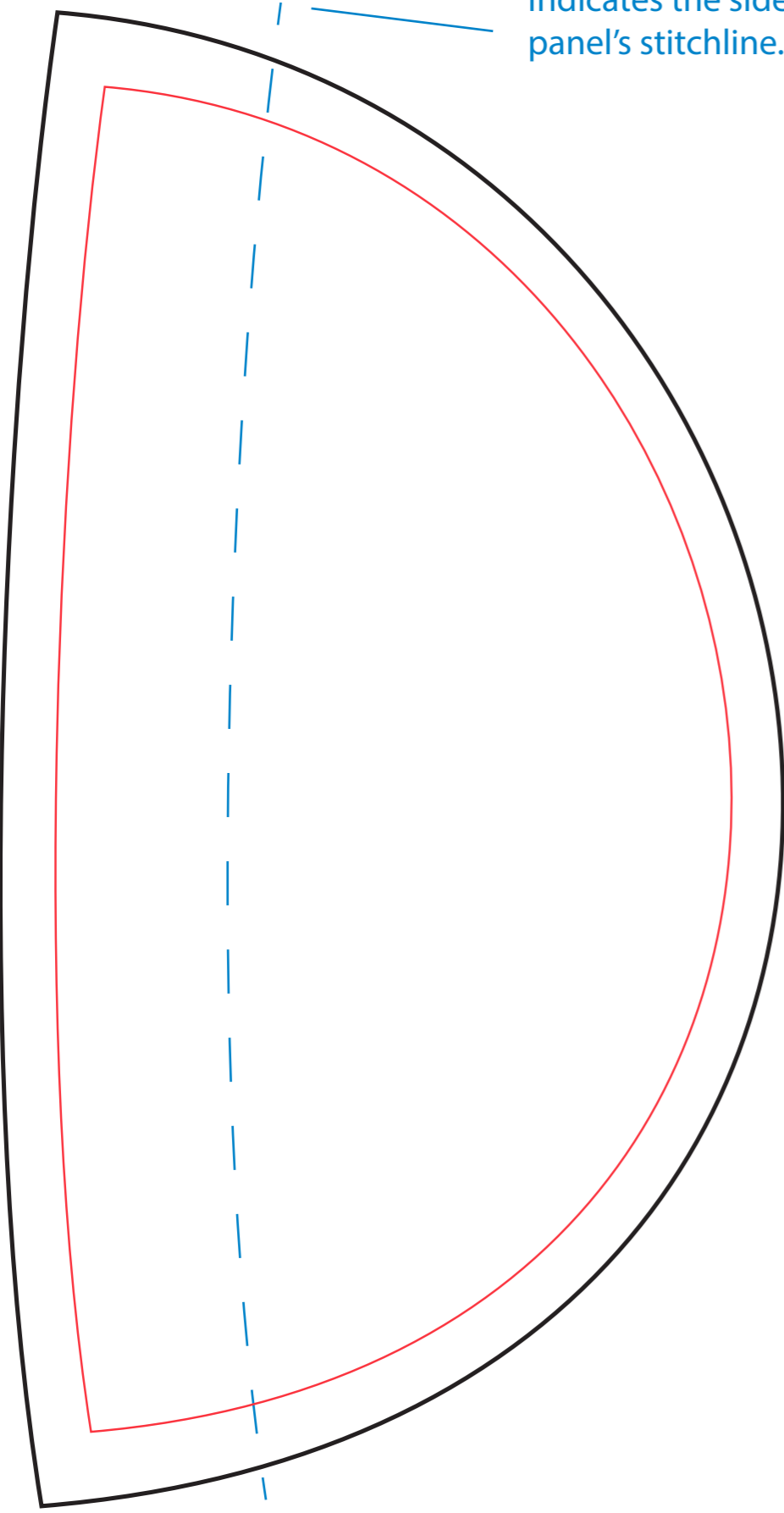
Indicates the side panel's stitchline.



< top bottom >

RIGHT SIDE PANEL

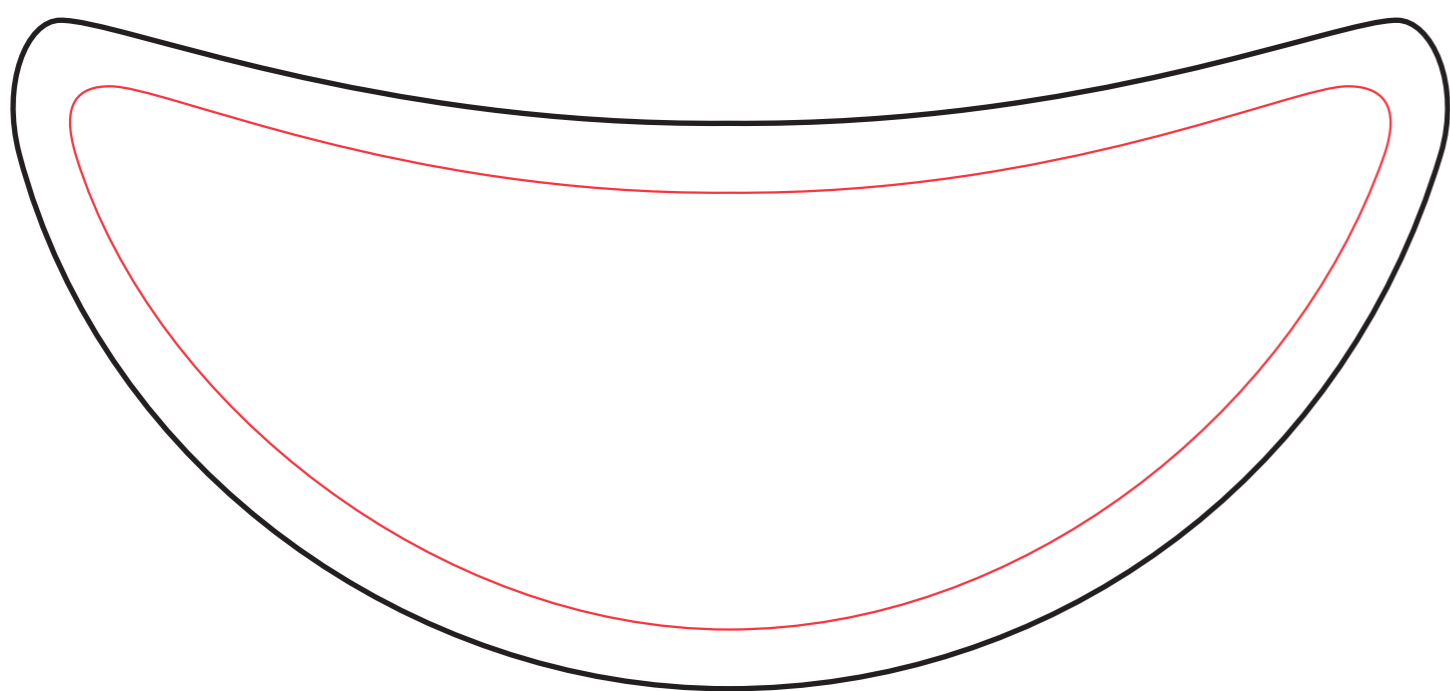
Indicates the side panel's stitchline.



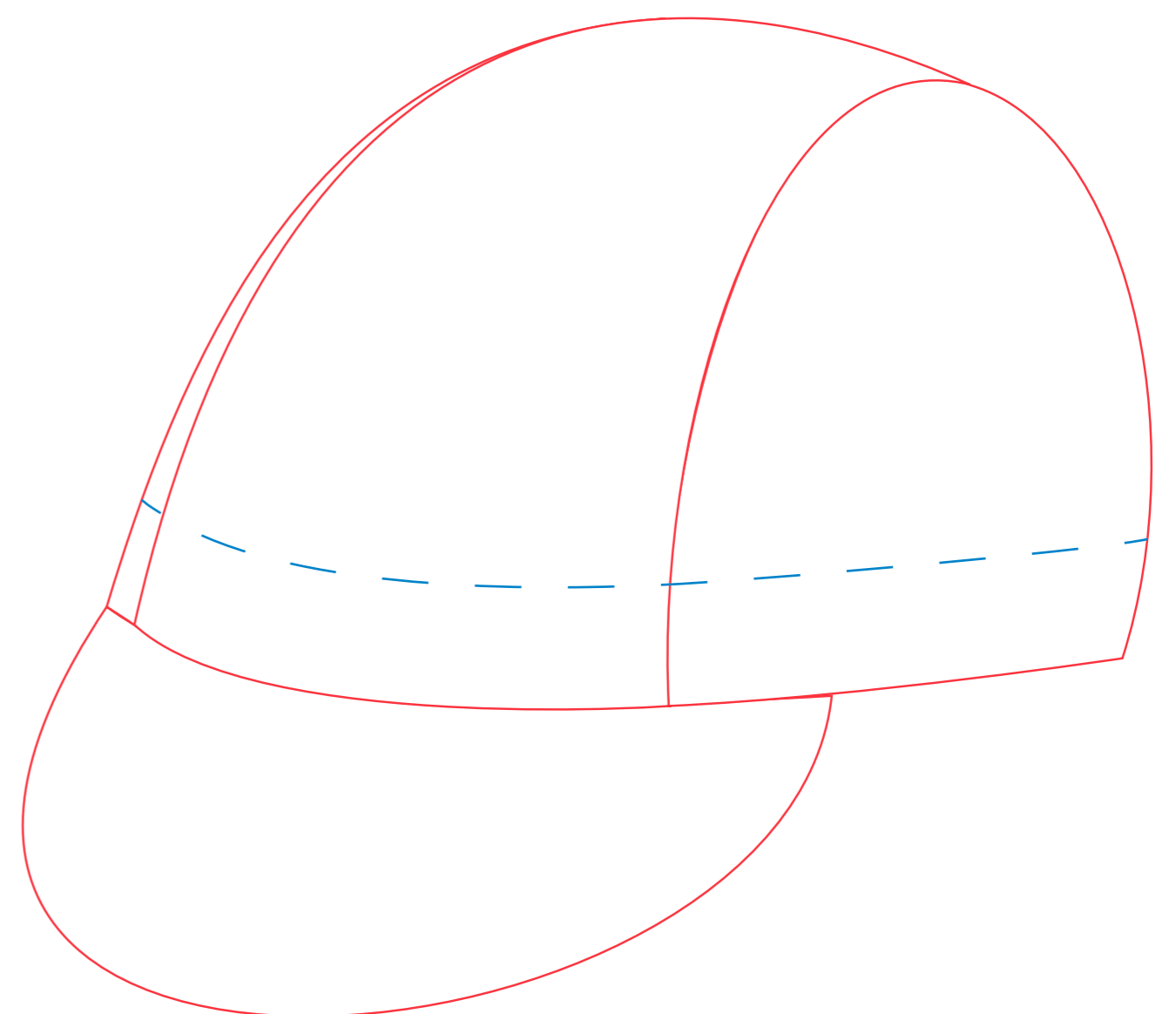
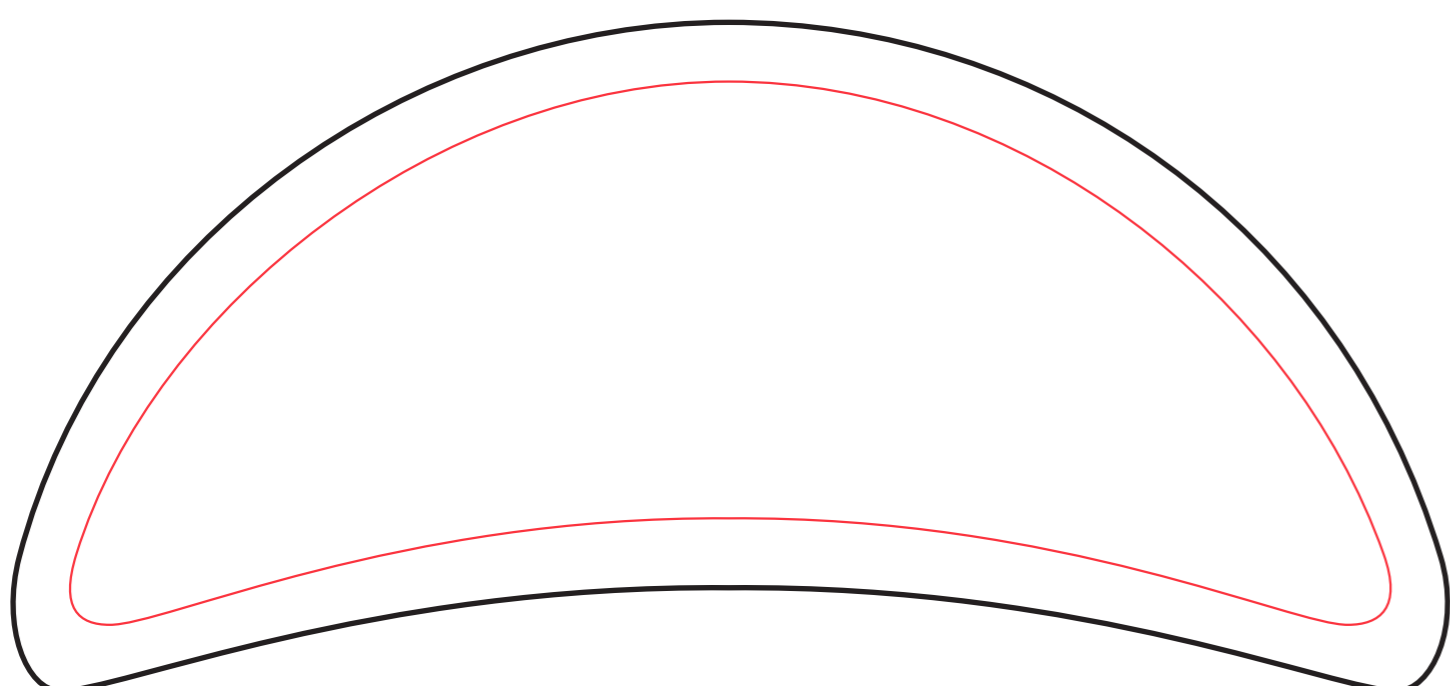
< bottom top >

MIDDLE PANEL (FRONT)

BRIM TOP



BRIM BOTTOM



At time of approval, please check this proof carefully before you take responsibility of approving. Take note of scale, color, placement, and spelling. By approving this proof, you are declaring it "Approved for Production".