

Jigglypuff Free Pattern

Catmigurumi.com





Hi, I'm Jane - the face behind Catmigurumi!
Thank you for choosing my pattern.

I'm an amigurumi enthusiast and pattern designer. I also love all things cute! I hope my design will help you make a cute and lovely plushie that will bring more smiles into your life.

If you have any questions or any comments, just drop me a message!

Again, thank you for choosing my pattern.
Enjoy and have fun!



IMPORTANT

This amigurumi pattern is designed by Catmigurumi and is for personal use only.
DO NOT duplicate, sell, distribute or translate this pattern in any way.

This character is licensed and copyright by Pokémon.
This amigurumi pattern is not affiliated with, endorsed by, or sponsored by Pokémon.



Tools & Material

**** You can use any yarn of your choice with appropriate size hook ****

- Scissors
- Yarn Needle
- Felt Sheet (Black)
- Stuffing

Abbreviation (U.S. Terms)

Rd. / Row	Round / Row #
Stitch	Stitch instruction for each round/row
Total	Total # of stitches for each round/row
MR	Magic Ring (with Single crochet, unless told otherwise)
SC	Single Crochet
INC	Increase
DEC	Decrease
BLO	Back Loop Only
SL	Slip Stitch
(.....)*n	Repeat instruction in brackets n times

This plushie is crocheted in spiraling, continuous rounds without slip stitches or turning chains, unless told otherwise.

Do not join last stitch of rounds to first stitch with a slip stitch.

Do not turn at beginning of rounds.



Head / Body Light Pink

Rd.	Stitches	Total
1	MR 8	8
2	8 INC	16
3	(SC, INC)*8	24
4	(3 SC, INC)*6	30
5	(2 SC, INC, 2 SC)*6	36
6	(5 SC, INC)*6	42
7	(3 SC, INC, 3 SC)*6	48
8-16	48 SC	48
17	(3 SC, DEC, 3 SC)*6	42
18	42 SC	42
19	(5 SC, DEC)*6	36
20	36 SC Start stuffing	36
21	(2 SC, DEC, 2 SC)*6	30
22	(3 SC, DEC)*6	24
23	(SC, DEC, SC)*6	18
24	(SC, DEC)*6	12
25	6 DEC	6

SL in the next stitch & fasten off.
Weave the yarn tail through the front loop of each of the remaining stitches and pull tight to close it.
Weave in the yarn end.



Stuff the Head/Body firmly with stuffing

Head Swirl Light Pink

Rd.	Stitches	Total
1	MR 6	6
2	(SC, INC)*3	9
3-7	9 SC	9
8	(2 SC, INC)*3	12
9	12 SC	12
10	(3 SC, INC)*3	15
11-17	15 SC Start stuffing	15
18	14 SC, INC	16
19	Flatten the piece 8 SC both sides together	8
SL in the next stitch & fasten off. Leave a long tail for sewing.		

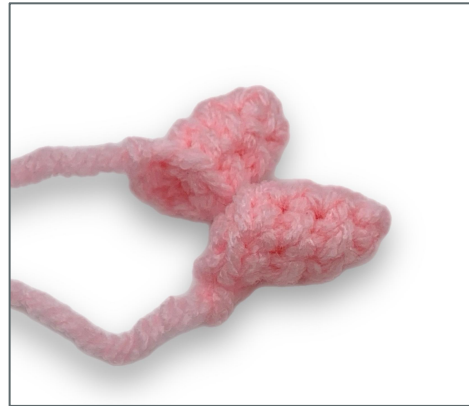
**Ear x2** Light Pink

Rd.	Stitches	Total
1	MR 5	5
2	5 INC	10
3	10 SC	10
4	(SC, INC)*5	15
5	15 SC	15
6	14 SC, INC	16
7	Flatten the piece 8 SC both sides together	8
SL in the next stitch & fasten off. Leave a long tail for sewing. No Stuffing.		



Hand x2 Light Pink

Rd.	Stitches	Total
1	MR 4	4
2	(SC, INC)*2	6
3-4	6 SC	6
SL in the next stitch & fasten off. Leave a long tail for sewing. Add stuffing.		

**Foot** x2 Light Pink

Rd.	Stitches	Total
1	MR 6	6
2	(SC, INC, SC)*2	8
3	(3 SC, INC)*2	10
4	(2 SC, INC, 2 SC)*2	12
5-6	12 SC	12
7	(2 SC, DEC, 2 SC)*2 Stuffing is optional	10
8	5 DEC	5
SL in the next stitch & fasten off. Stuffing is optional. Weave the yarn tail through the front loop of each of the remaining stitches and pull tight to close it. Weave in the yarn end.		

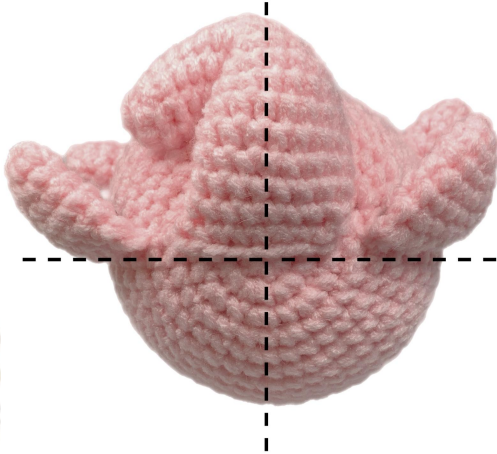
**Eye** x2 2 Turquoise, White (Optional)

Rd.	Stitches	Total
1	MR 6	6
2	6 INC	12
SL in the next stitch & fasten off. Leave a long tail for sewing. No Stuffing		
3	Now with White Color BLO 12 SL on Rd. 2	12
SL in the next stitch & fasten off. Leave a long tail for sewing. No Stuffing		

Assemble

Head Swirl

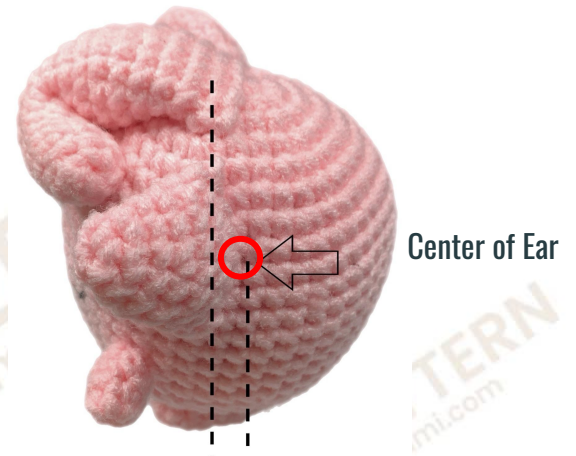
- Sew on the top of Head / Body in the middle starting on Rd. 1
- Bend the tip to the right, around Rd. 8-9 and secure it in place



Assemble

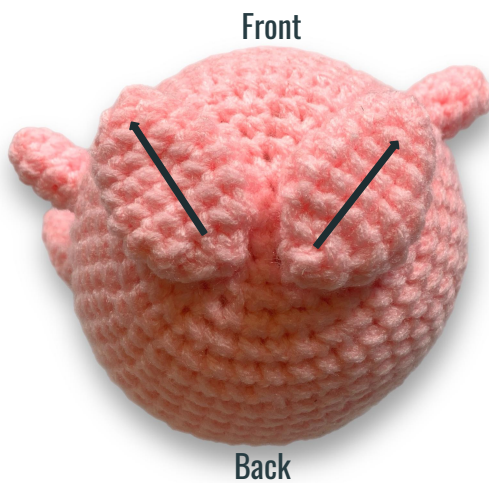
Ear

- Cut 2 black triangles from felt and glue them to the ears.
- Sew on Head/Body between Rd. 5-11 on both sides.
- Line up the bottom two corners of the ears with the Swirl (Rd. 1), and push the center of the ear inward slightly.



Foot

- Sew the foot to the of the bottom of Head / Body, with the front sides pointing slightly outwards.



Hand

- Sew the hands onto the Head/Body between Rd. 14-16 on both sides.



Assemble

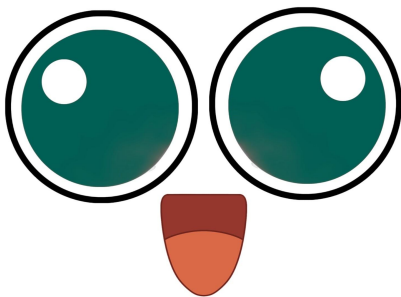
Facial

There are a several options for the eyes

1. Ready Made Felt Facial Set is available for purchase on my website.
www.catmigurumi.com
2. Pin eyes and mouth into position and then attach to your Jigglypuff with strong craft glue or fabric glue.
3. Make your own felt facial using the template provided below
4. Embroidery
5. Crochet eye

If you are using my template below

- The eye size should be around **4.5 rounds tall**
- Attach eyes to Face/Body between rd. 12-16, 6 stitches apart
- Mouth should be around **3 rounds tall**
- Attach mouth to Face/Body between rd. 15-17



* You will need to adjust the size to fit your finished work*



Good Job!!!

You just finished the cutest plushie.
Give yourself a round of applause!



I would love to see your cute plushies, share your pictures
and tag me!

 [Instagram](#)

 [Youtube](#)

 www.Catmigurumi.com