

BOLT 5G

User Guide

Contents

I. CAUTIONS ON MOBILE PHONE USE.....	4
1.1 INTERFERENCE.....	4
1.2 REASONABLE USE.....	4
1.3 QUALIFIED MAINTENANCE SERVICE	4
1.4 WATER-RESISTANCE.....	4
1.5 EMERGENCY CALLS.....	4
2 PRECAUTIONS FOR USE OF BATTERY	4
3 CAUTIONS FOR CHILDREN.....	5
II. KEYS AND PARTS.....	6
III. START TO USE	7
3.1 To INSERT SIM CARD(S):	7
3.2 CHARGE THE BATTERY	9
IV. BASIC FUNCTIONS	10
1. LOCK AND UNLOCK THE SCREEN	10
2. MAKE IT YOURS	11
3. SWITCH TO RECENTLY USED APPLICATION	17
4. MAKE A CALL	18
5. CALL LOG.....	19

6. ANSWERING PHONE CALLS AND REJECTION	20
7. ADD A CONTACT	21
8. SEND AND RECEIVE MESSAGE(S)	22
9. BROWSER THE WEB	24
10. ENJOY MUSIC	24
11. DOWNLOAD APPLICATIONS ON GOOGLE PLAY	25
12. MANAGE APPLICATIONS	26
13. APPLICATIONS & UTILITIES	27
14. SETTINGS	27
15. FEDERAL COMMUNICATION COMMISSION INTERFERENCE STATEMENT	327

I. Cautions on mobile phone use

1.1 Interference

All phones may be interfered, which affect phone calls.

1.2 Reasonable use

Use only in the normal position. Do not touch the antenna area unnecessarily.

1.3 Qualified maintenance service

Only qualified personnel may install or repair this product.

1.4 Water-resistance

Your device is non water-resistant. Keep it dry.

1.5 Emergency calls

Ensure the phone is switched on and in service. Enter the emergency number and press the Dialer icon.

2 Precautions for use of battery

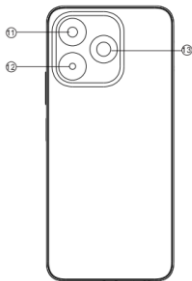
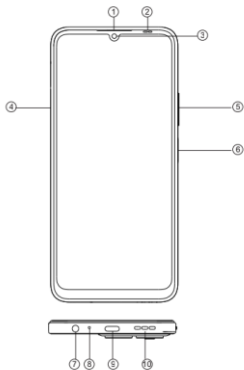
2.1 Do not dispose of batteries near or in a fire to avoid dangers.

2.2 Do not dispose of batteries in the garbage. Dispose of batteries to assigned battery recycling center.

3 Cautions for children

Keep your device out the reach of children in case of accidental injury caused by incorrect use of the device as toys.

II. Keys and parts



- 1. Receiver
- 2. Light Sensor / Proximity Sensor
- 3. Front Camera
- 4. SIM Card Tray
- 5. Volume Key
- 6. Power Key
- 7. Audio Jack
- 8. MIC
- 9. Type C Connector
- 10. Speaker
- 11. Rear Camera
- 12. Rear Camera
- 13. Flashlight

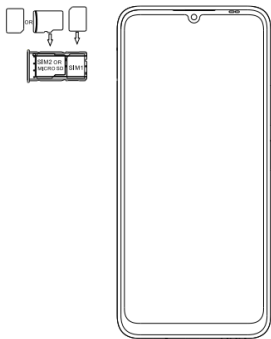
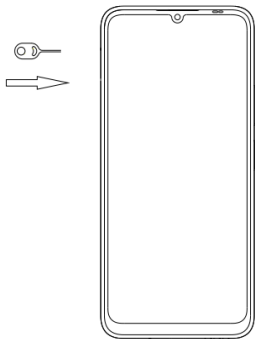
III. Start to use

3.1 To insert SIM card(S):

Insert the SIM card correctly in the card slot(s) (See figure below), suggest switch off the phone when you insert SIM card.

Insert the Micro SD card into the slot with the correct direction (See figure below), suggest switch off the phone when you insert Micro SD.

Note: Use only compatible memory cards with this device. Incompatible memory cards may damage the card or the device and corrupt the data stored in the card.



3.2 Charge the battery

During charging, the battery indicator on the phone is a thunder icon. If the device is switched off during charging, there will still be a charging indication on the screen that shows the phone is being charged. If the device is overused when the battery is low, the charging icon might take some time to appear.

When the battery indicator on the screen display 'Battery is full', thunder icon will disappear, which means the completion of charging. If the phone is switched off during charging, the screen will display ' Battery is full '. During charging, the battery, the device and the charger will get hot. This is normal.

Unplug the charger from the AC electrical outlet and disconnect the wiring between the phone and the charger after charging. .

Cautions: Charge the phone in a well ventilated place in which the temperature is between -10°C to +55°C. Use the charger provided by the manufacturer only. The use of unconfirmed charger may lead to dangers and violate the manufacturer's warranty clause. If the temperature is too high or too low during charging, the device will automatically send a warning and stop charging to avoid damage to the battery or any danger.

IV. Basic functions

1. Lock and unlock the screen

Press power button to enter Sleep mode and meanwhile the screen will be locked; press power button again to wake up and then swipe up for unlock.



2. Make it yours

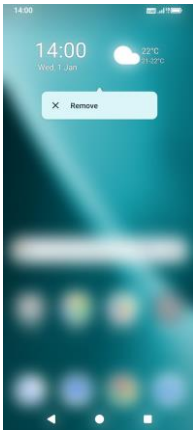
2.1 Home screen: It is your starting point to access all the features on your phone. It displays application icons, widgets, shortcuts, and other features. Long press home screen and Modify Wallpaper.



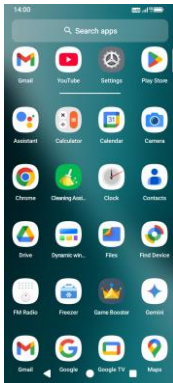
2.2 Long press Home screen, and then you can Modify Wallpaper; or enter Launcher and long press and hold an application till the screen vibrates, and then loosen your hold finger.



Long press the widget or icon, after the phone vibrates, select delete or uninstall (select delete for widget, select uninstall for APP)



Swipe up and enter to application list.

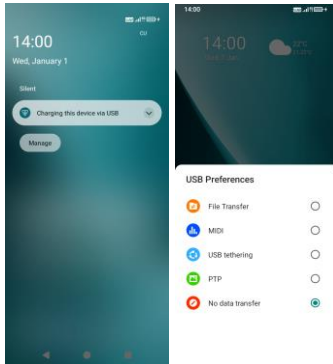


2.3 Notification Bar: At the top of the screen, the Status Bar displays the time, status, and notifications. If there is a new message, missed call or something in the notification bar, you can drag it down to open notification panel and click the desired one to have a view. When you finished, you can close it by dragging the panel up or pressing “Back”.



2.4 Android™ and computer connection

If you connect your phone to PC via USB, you can find the USB options, choose This Device file Transfer option, you can see your phone memory in PC, this is same function like USB storage.



3. Switch to Recently Used Application


Press menu key.

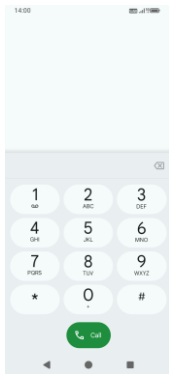


Touch and slide this place
can choose to open the
history application

Touch this icon to close
all history application

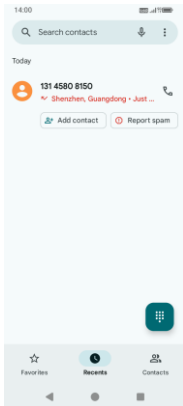
4. Make a call

Click  and enter a complete phone number to make a call. Your phone supports smart search.



Swipe to right to view Call history and Contacts.

5. Call log

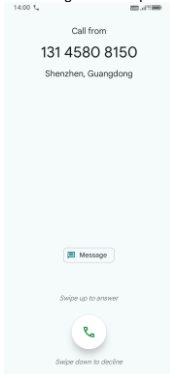


Press the number if you want to see the details , send message or call back, there are three options for you.

Press the number, you can view the contact details, send a message or call back.


6. Answering phone calls and rejection

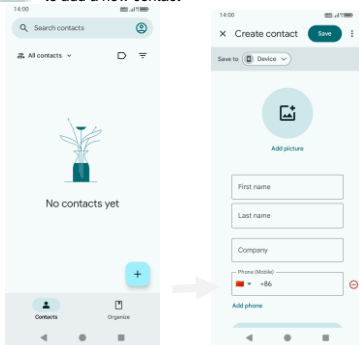
When there is an incoming call, you can drag the icon up or down to answer or hang up it directly.



7. Add a contact

Touch  to enter contact

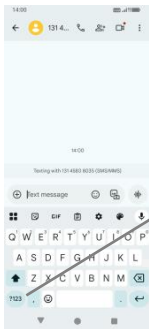
Touch  to add a new contact



Click here to add new contact and in this page press menu key to enter menu view, setting, etc.

8. Send and Receive message(s)

Touch  enter to messaging, touch "Start chat".



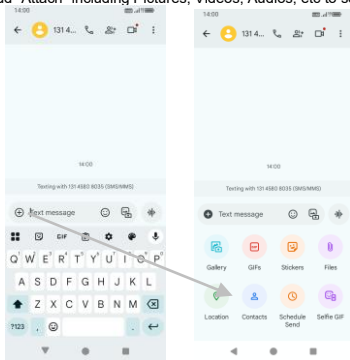
Tap this icon to select desired contact from phone book.

Touch to switch the digital input and symbols

Press space or a punctuation mark to enter the highlighted suggestion

When you are composing a new text message, you can select text for cutting or copying. The selected text is highlighted in blue

Tap  to add “Attach” including Pictures, Videos, Audios, etc to send MMS.SMS



When a new message comes, you can read by dragging notification panel and click the message, or entering Message to read it directly.
Long press one of the all message threads, you can delete it”.

9. Browser the Web

9.1 Set up Internet/Data connection

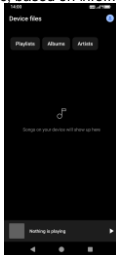
Enter Settings > More..., scroll down to find out Mobile network, and then enter "Access Points Names, choose the desired WAP account.

9.2 Switch on Data connection or Wi-Fi

To browse the web, you need to switch on Data connection. If there is Wi-Fi around, you can switch on Wi-Fi to use it browse the web.

10. Enjoy music

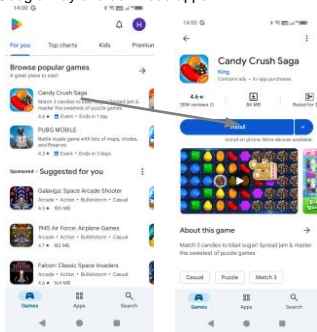
When you copy music to your SD card, the Music player searches the card for music files and builds a catalog of your music, based on information about each file that is stored in the file itself.



11. Download applications on Google Play

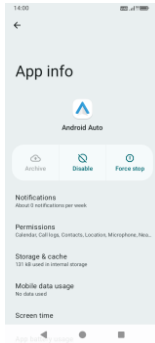
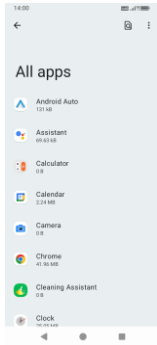
11.1 Add Google Account

11.2 Enter Google Play and download apps



12. Manage Applications

Enter Settings > Apps.
You can see app info.



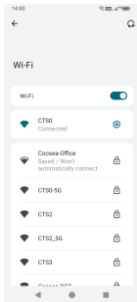
13. APPLICATIONS & UTILITIES

For your entertainment purpose, your device is provided with several interesting games, applications and utilities, such as Gmail, Email, Google Play. Before accessing the applications, please turn on the data connection or connect to wifi

14. Settings

14.1 Wi-Fi

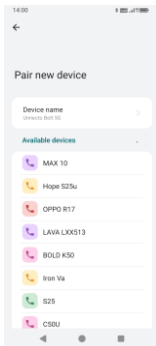
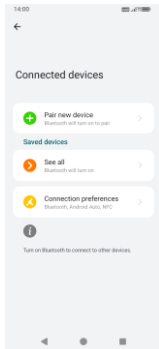
Open Wi-Fi, search nearby Wi-Fi and connect it, then you can use Internet or download apps for free.



14.2 Bluetooth

Settings> Connected devices> Pair new device

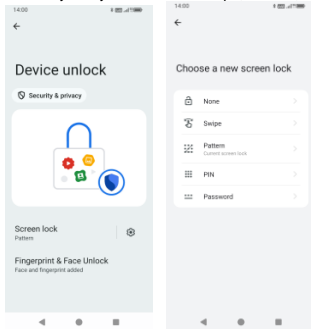
Open Bluetooth, connect to other phone, you can share something like music, photos, movies etc to other people.



14.3 Security

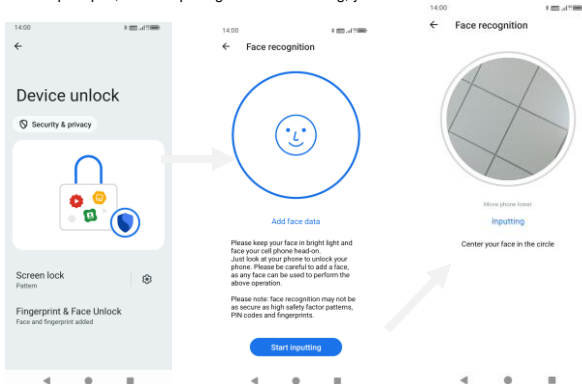
Click Settings –**Security & privacy**–Device unlock –Screen lock.

There are four screen lock ways for you to choose :Swipe, Pattern, PIN, Password.



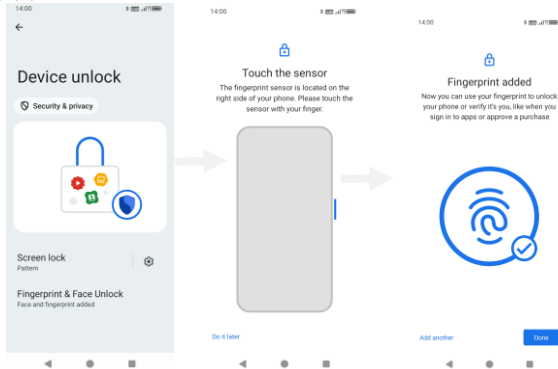
14.4 Face ID

Click Settings –**Security & privacy** –Device unlock - Fingerprint & Face Unlock-Face Unlock, follow the prompts ,after completing the face recording, you can use the face unlock function.



14.5 Fingerprint

Click Settings –**Security & privacy** –Device unlock - Fingerprint & Face Unlock-Fingerprint, follow the prompts ,after completing the fingerprint recording, you can use the fingerprint unlock function.



15. Federal Communication Commission Interference Statement

FCC ID: 2ADR3UB501

This device complies with Part 15 of the FCC Rules. Operation is subject to the following two conditions: (1) This device may not cause harmful interference, and (2) this device must accept any interference received, including interference that may cause undesired operation.

This equipment has been tested and found to comply with the limits for a Class B digital device, pursuant to Part 15 of the FCC Rules. These limits are designed to provide reasonable protection against harmful interference in a residential installation. This equipment generates, uses and can radiate radio frequency energy and, if not installed and used in accordance with the instructions, may cause harmful interference to radio communications. However, there is no guarantee that interference will not occur in a particular installation. If this equipment does cause harmful interference to radio or television reception, which can be determined by turning the equipment off and on, the user is encouraged to try to correct the interference by one of the following measures:

- Reorient or relocate the receiving antenna.
- Increase the separation between the equipment and receiver.
- Connect the equipment into an outlet on a circuit different from that to which the receiver is connected.
- Consult the dealer or an experienced radio/TV technician for help.

FCC Caution: Any changes or modifications not expressly approved by the party responsible for compliance could void the user's authority to operate this equipment.

Radiation Exposure Statement:

This device meets the government's requirements for exposure to radio waves.

This device is designed and manufactured not to exceed the emission limits for exposure to radio frequency (RF) energy set by the Federal Communications Commission of the U.S. Government.

The exposure standard for wireless device employs a unit of measurement known as the Specific Absorption Rate, or SAR. The SAR limit set by the FCC is 1.6W/kg. Tests for SAR are conducted using standard operating positions (10mm) accepted by the FCC with the device transmitting at its highest certified power level in all tested frequency bands.

To maintain compliance with radio frequency exposure guidelines and limits, keep the smartphone at least 10mm away from your body. When you carry the smartphone on your body, use only accessories equipped with an integrated belt clip that are supplied or approved by the manufacturer. If you use a body-worn accessory not supplied by the manufacturer, verify that the accessory does not contain metal and keep the smartphone at least 10 mm from your body.

Google,Android,Google Play,YouTube and other marks are trademarks of Google LLC.