



## Contents

<b>WHAT YOU'LL NEED</b> .....	2
<b>PROCEDURES</b> .....	2
1) Go to the VF Tuner website .....	2
2) Getting to the Download Page .....	3
3) Download Page. Choosing your VF Tuner version .....	3
4) Download Pop-Up .....	4
5) V2.0+ Installer .....	5
V1.7.X+ Installer .....	17
6) Driver Installer: WiFlash Device .....	29
Driver Installer: Legacy Device .....	32



### WHAT YOU'LL NEED

---

- 1) Laptop using Windows
- 2) WiFlash Device or Legacy Device connected to the laptop
- 3) Internet connection

Reminder:

If you're updating your VF Tuner from an old version, you may want to:

- a) uninstall your old version of VF Tuner,
- b) delete the installation folder, and
- c) restart your laptop before proceeding with installation of a fresh/new copy
- d) some anti-virus software may be too aggressive in flagging files during the installation. We recommend that you temporarily disable them during the set-up to prevent any errors later on.

### PROCEDURES

---

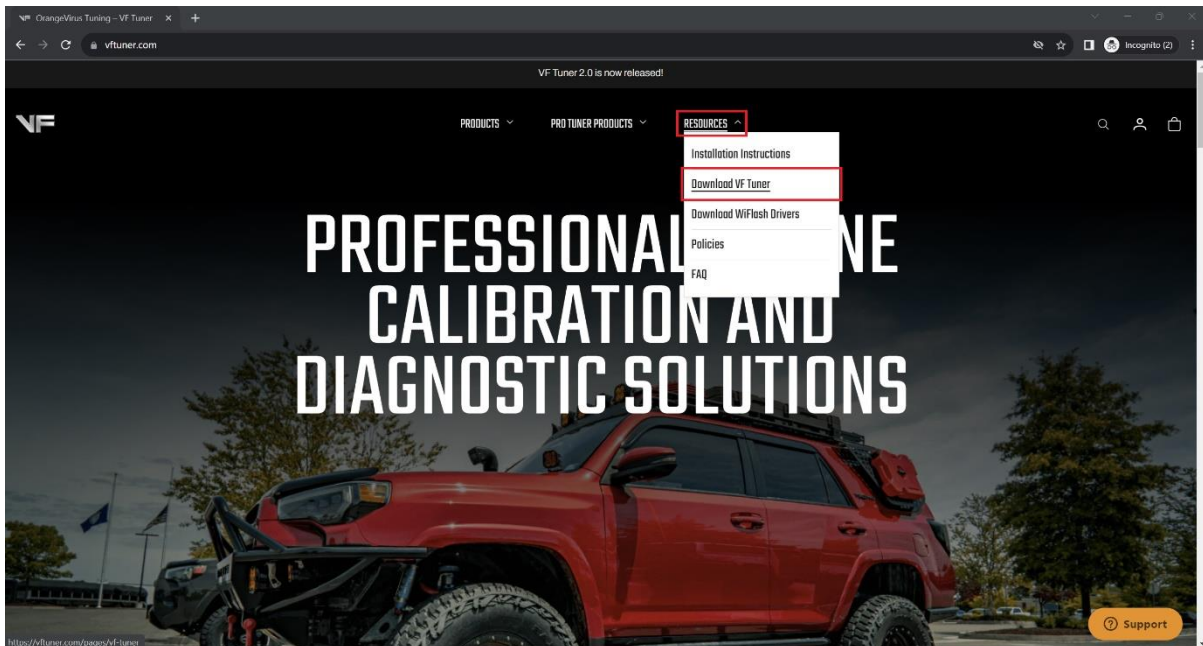
- 1) Open your laptop's browser (Google Chrome, Mozilla Firefox, Microsoft Edge, Safari, Opera, etc) and go to [www.vftuner.com](http://www.vftuner.com)





# VF TUNER INSTALLING VF TUNER and DEVICE DRIVERS

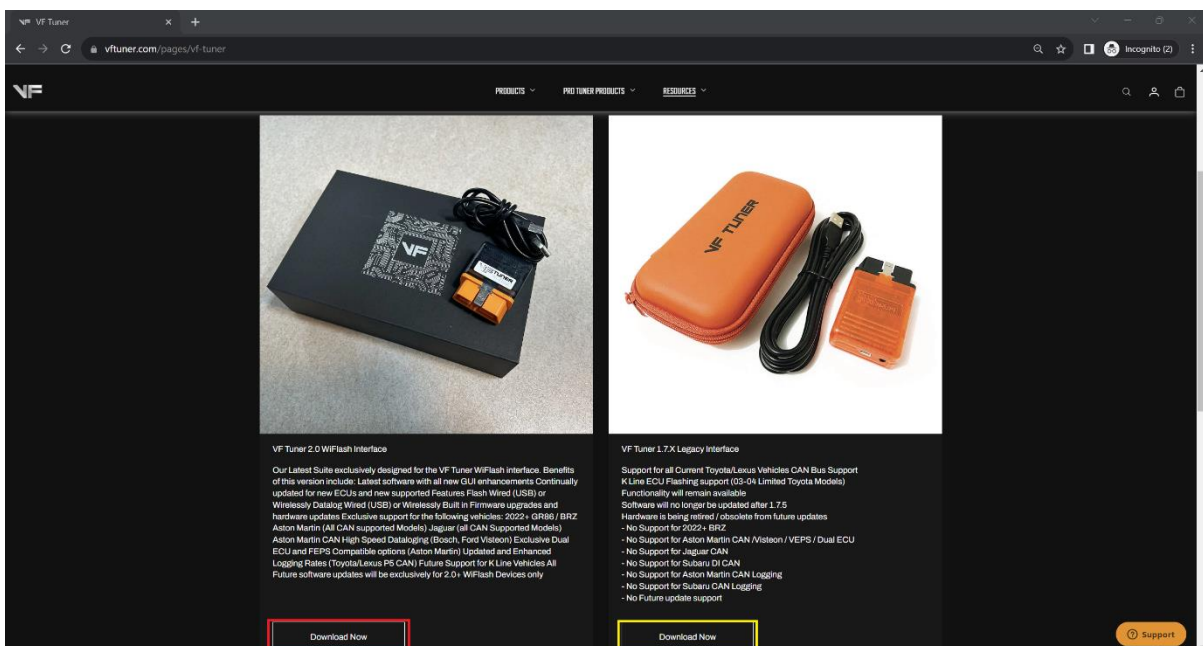
2) Hover your pointer over “Resources”, and a dropdown menu will open. Select “Download VF Tuner.”



3) The download page will open. You will have to choose which version of VF Tuner you will install. Click the “Download Now” of the appropriate version for you.

**If you have our WiFlash device, you need to download and install V2.0+**

**If you have our Legacy device, you need to download and install V1.7.X+**



Please send all your questions to: [support@ovtune.zendesk.com](mailto:support@ovtune.zendesk.com)

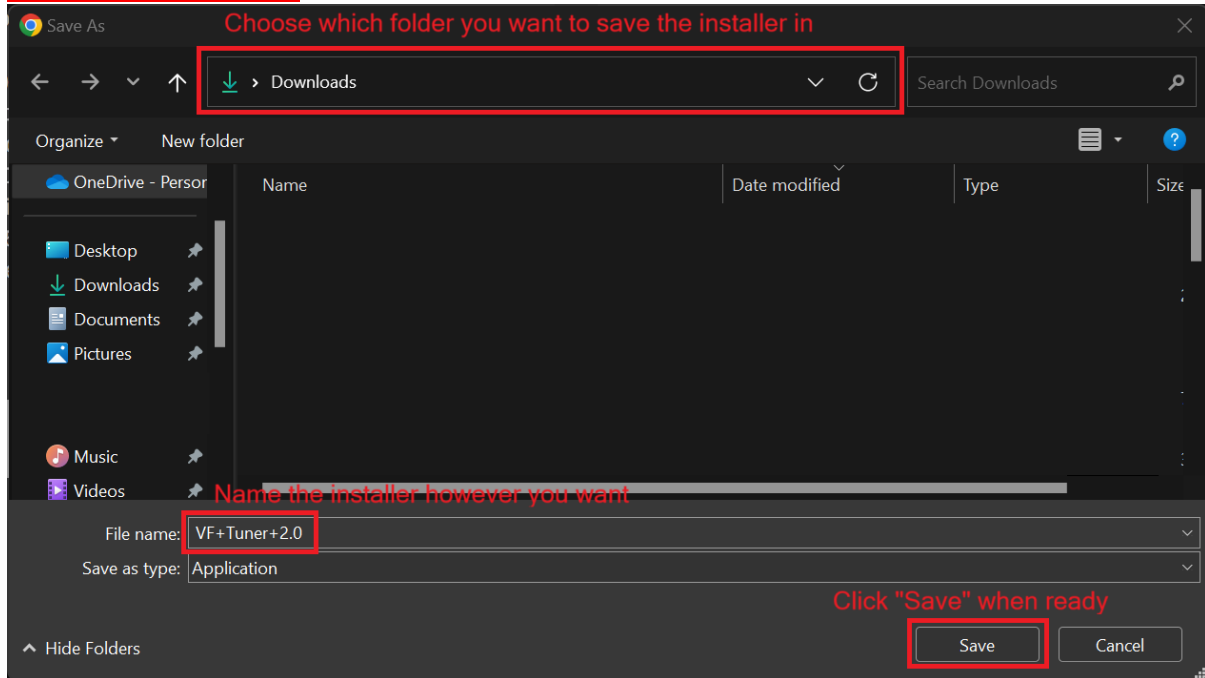


# VF TUNER

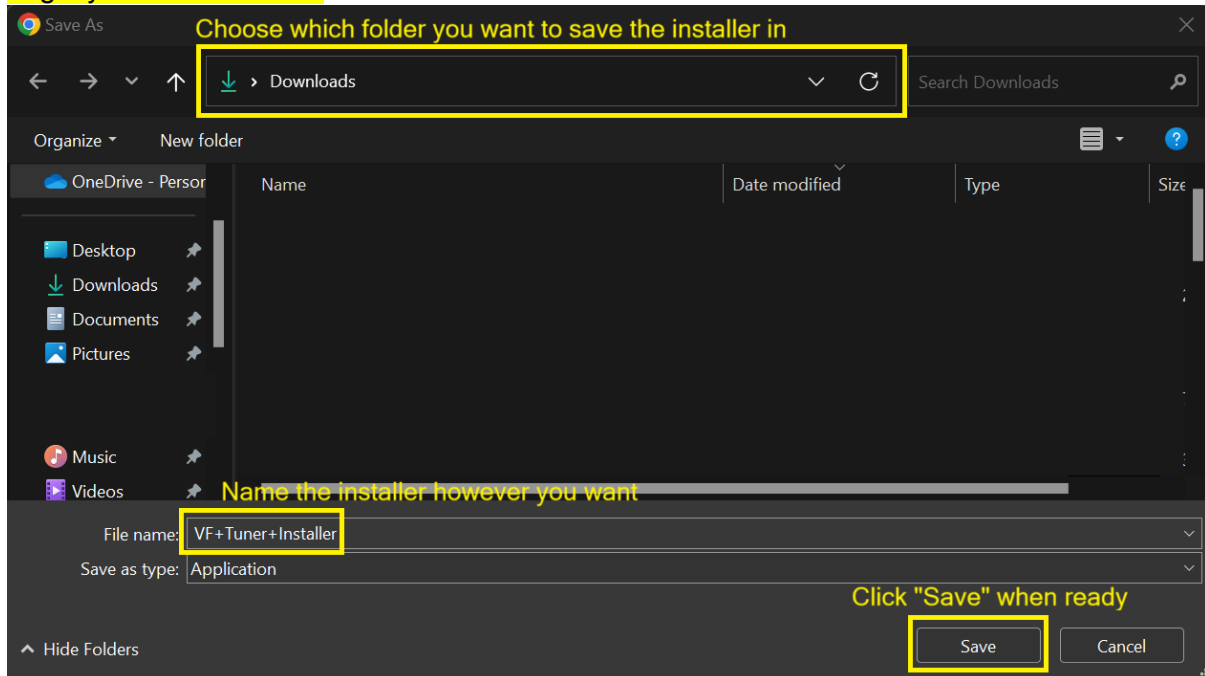
## INSTALLING VF TUNER and DEVICE DRIVERS

4) Clicking the “Download Now” button will open a window that will ask you to save the installer.

### WiFlashDevice / v2.0+



### Legacy Device / v1.7.X+

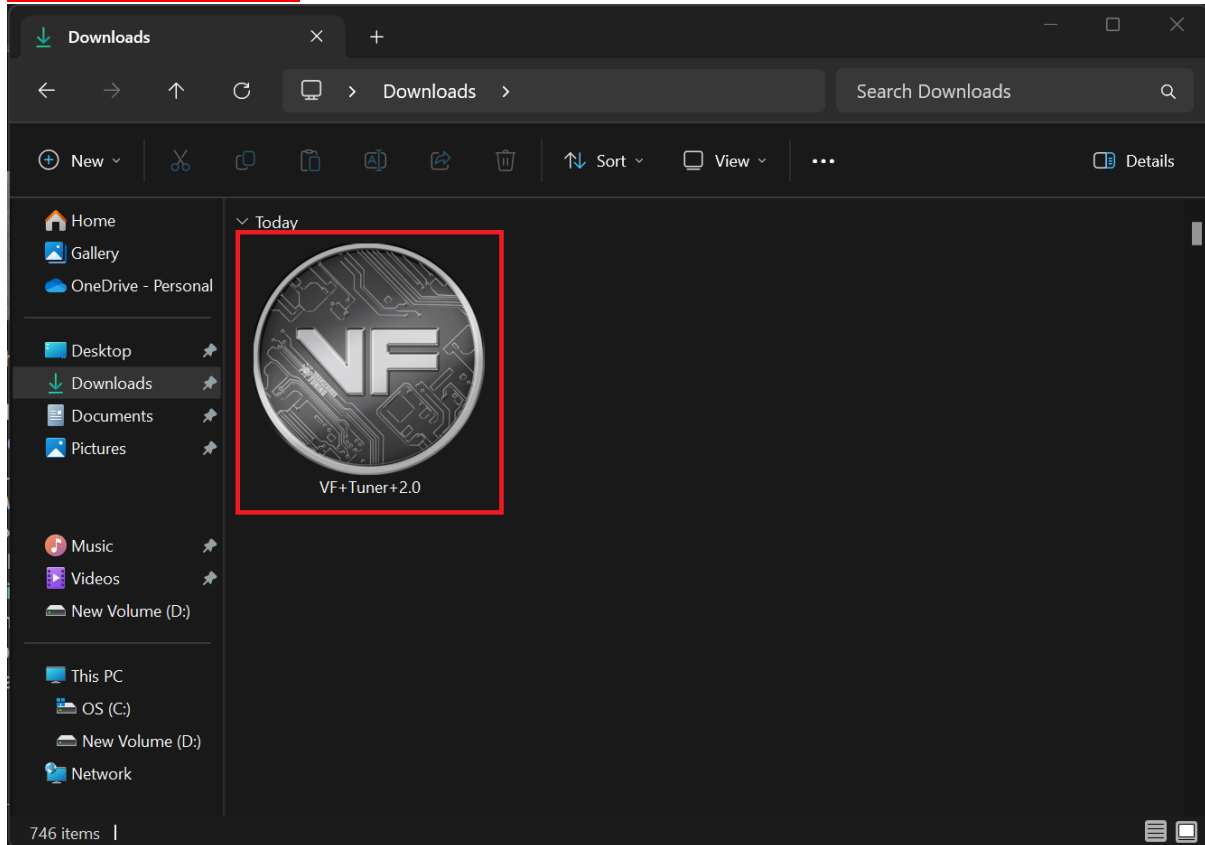




## VF TUNER INSTALLING VF TUNER and DEVICE DRIVERS

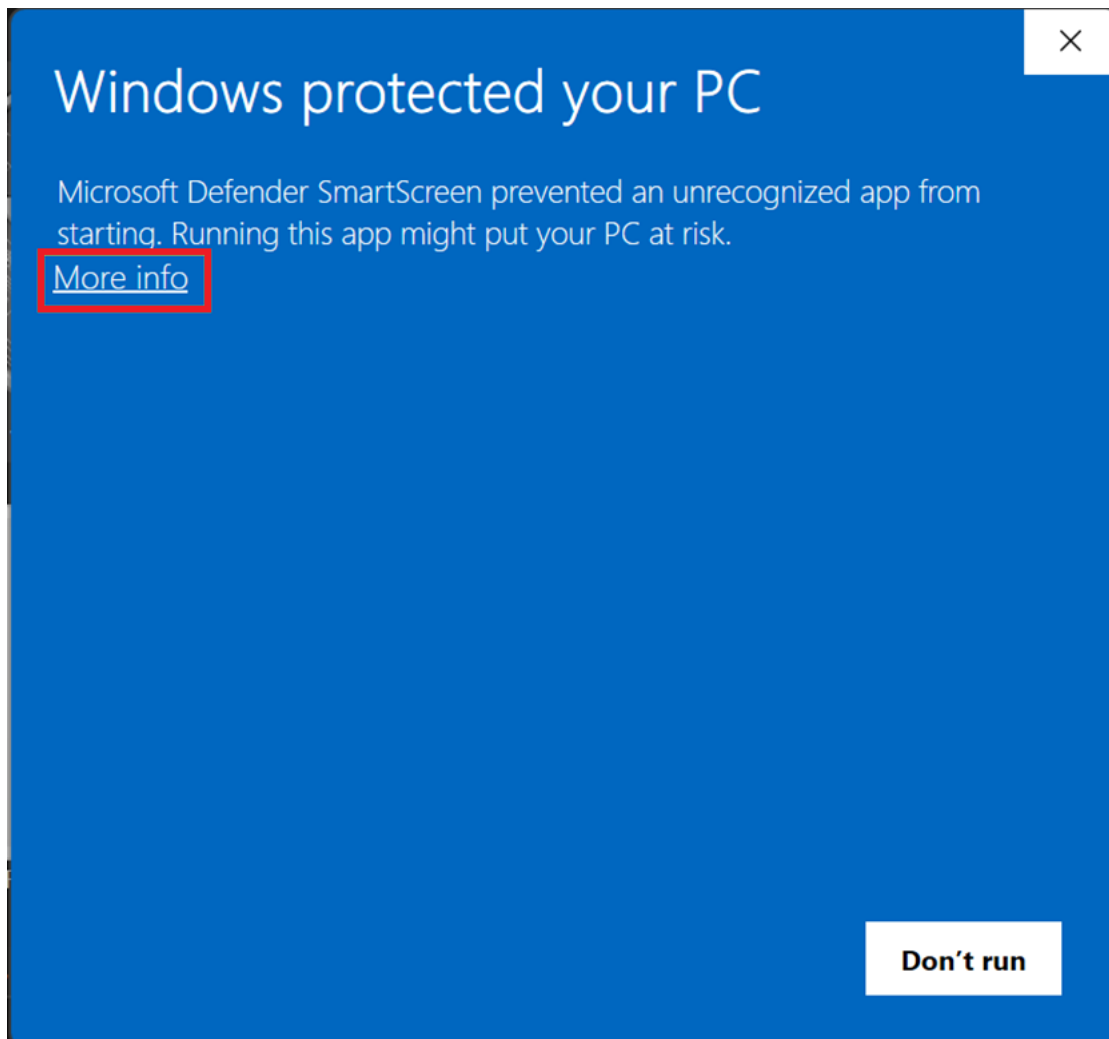
5) The downloaded installer will appear in the folder of your choice. Double click it to run the installer. Please follow the screenshots below on how to install it.

### WiFiFlashDevice / v2.0+



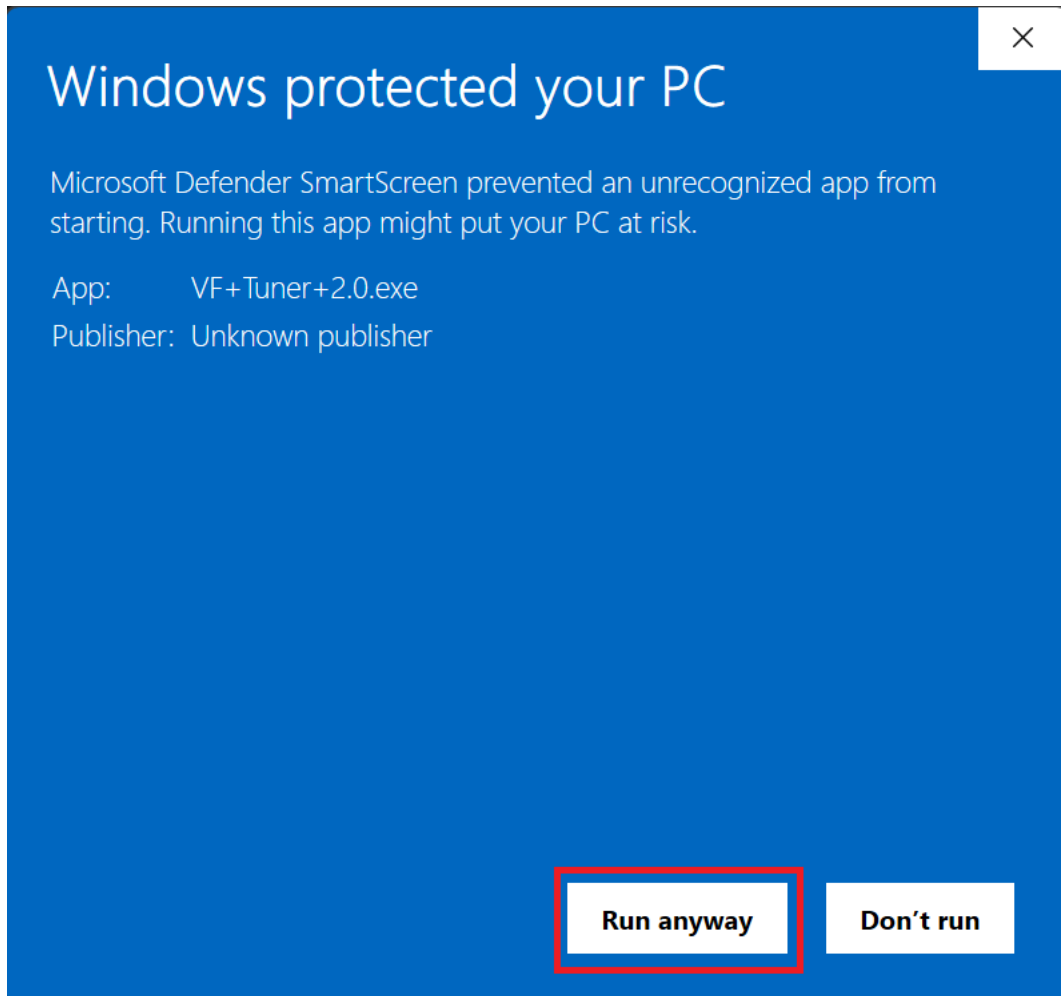


Click "More info"



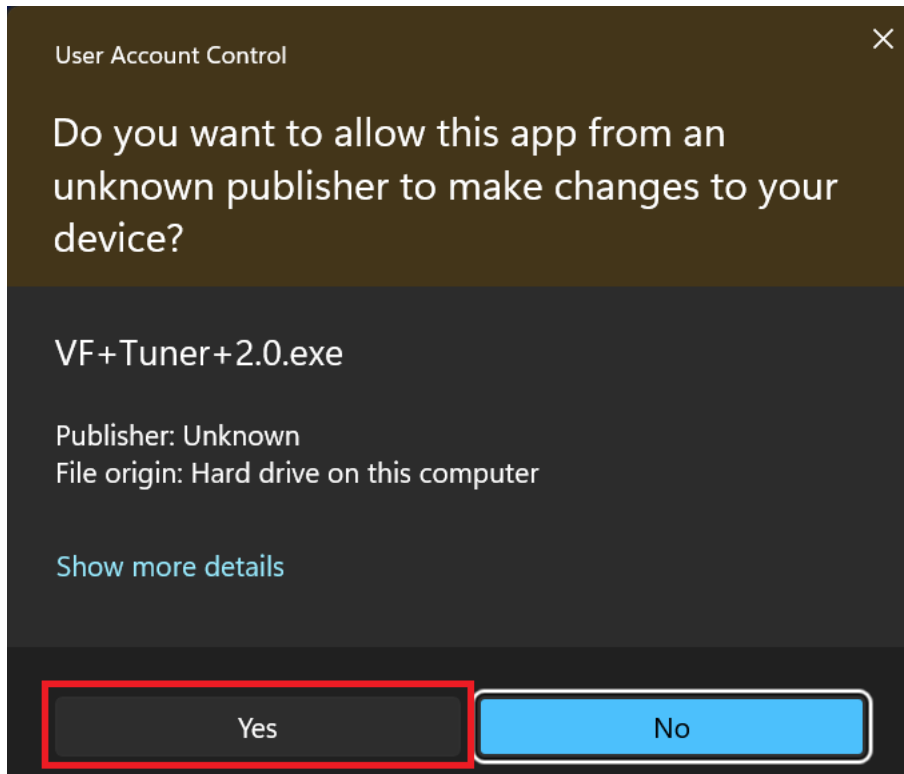


Click "Run anyway"





Click "Yes"



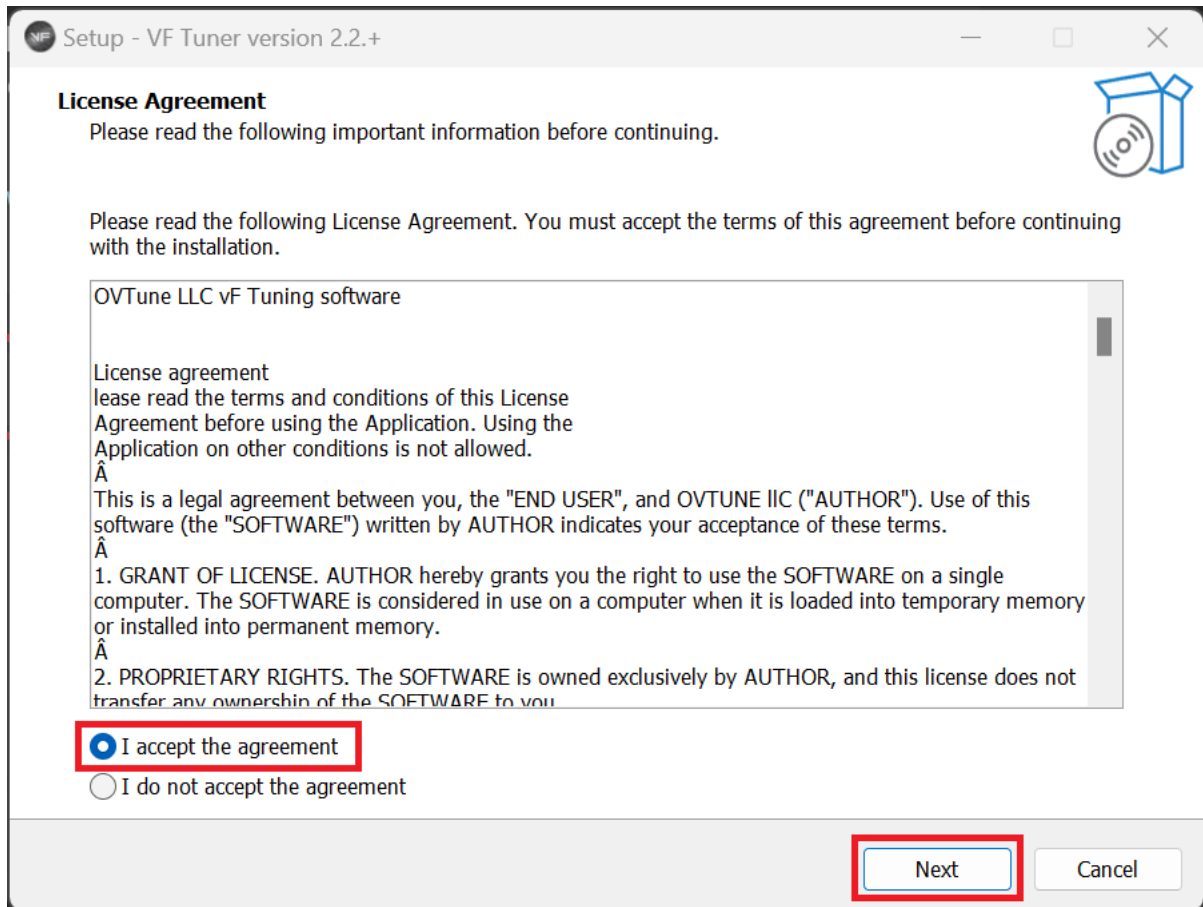




# VF TUNER

## INSTALLING VF TUNER and DEVICE DRIVERS

Make sure the “I accept the agreement” is selected, then click “Next”

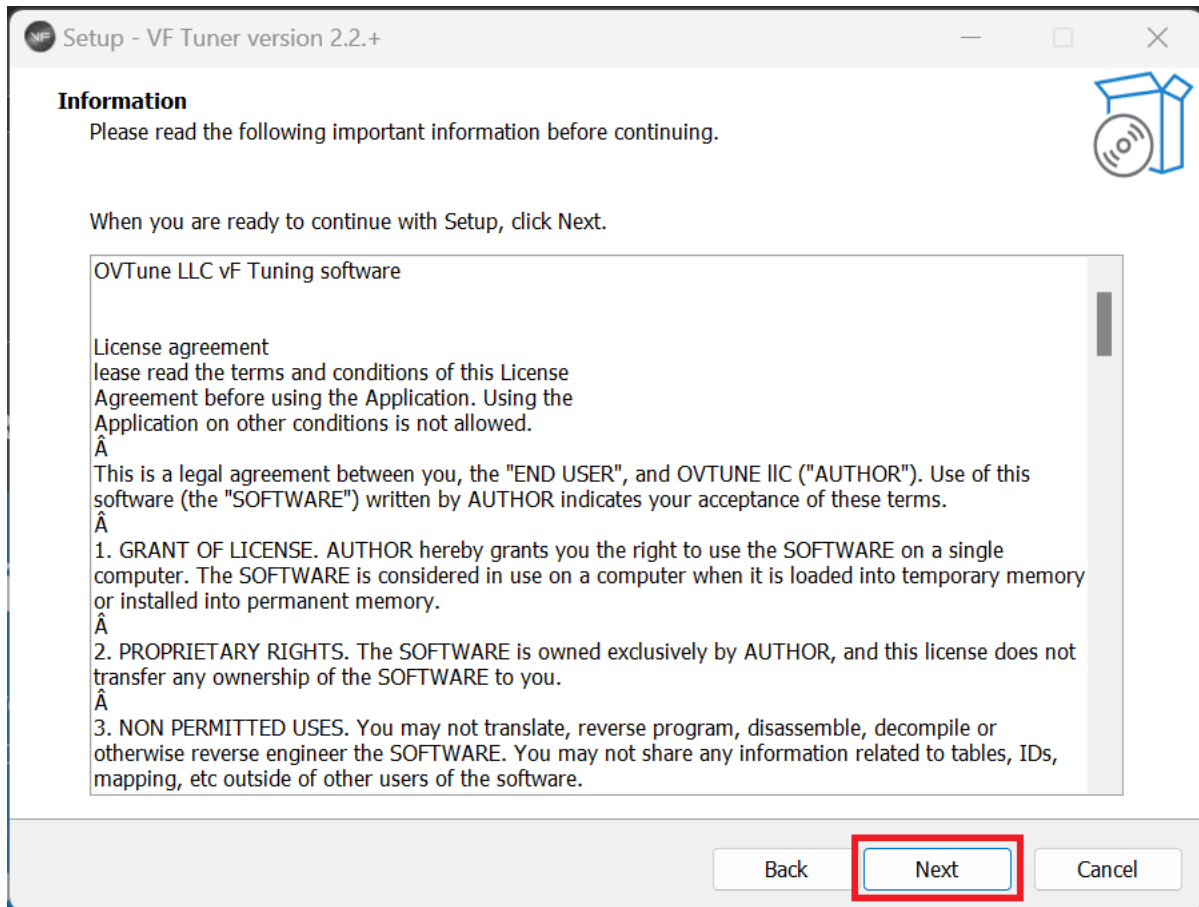




# VF TUNER

## INSTALLING VF TUNER and DEVICE DRIVERS

Click "Next"

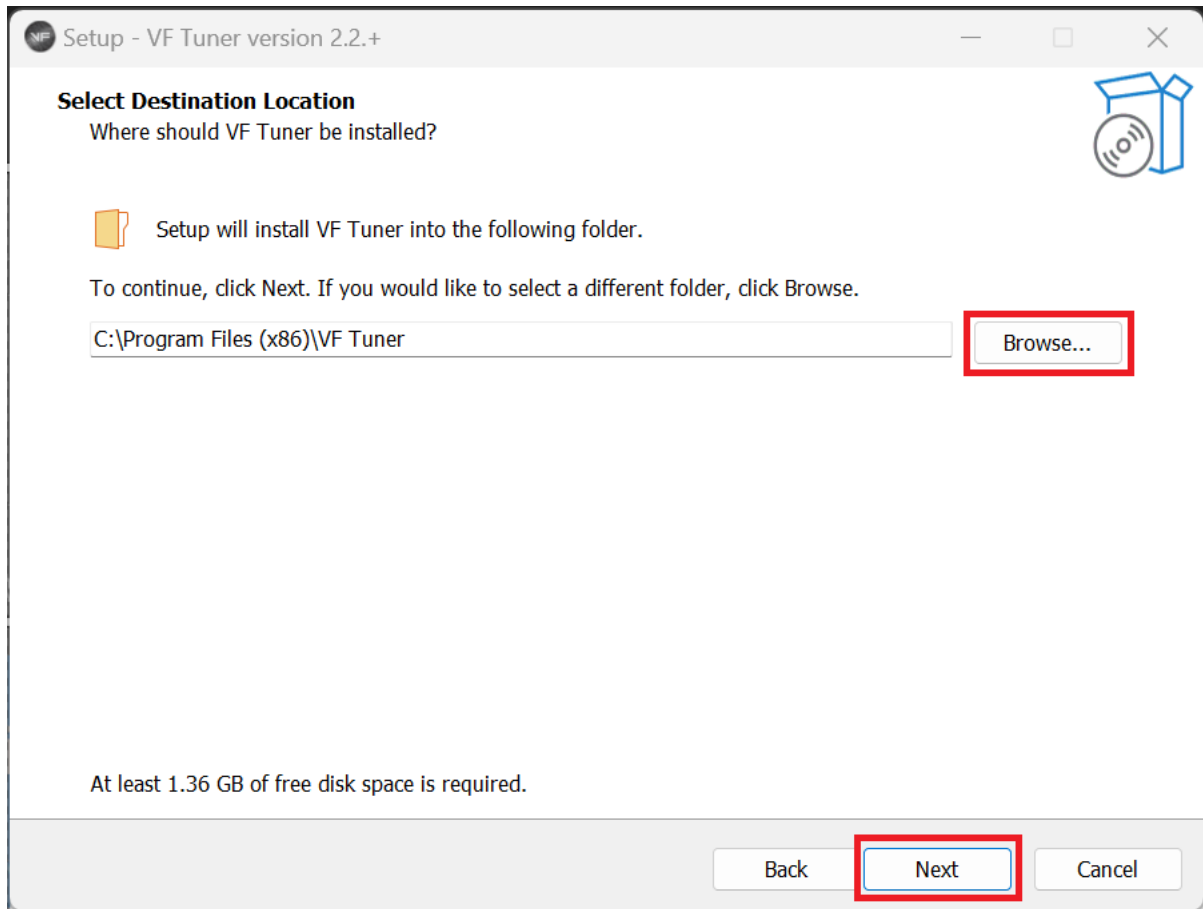




# VF TUNER

## INSTALLING VF TUNER and DEVICE DRIVERS

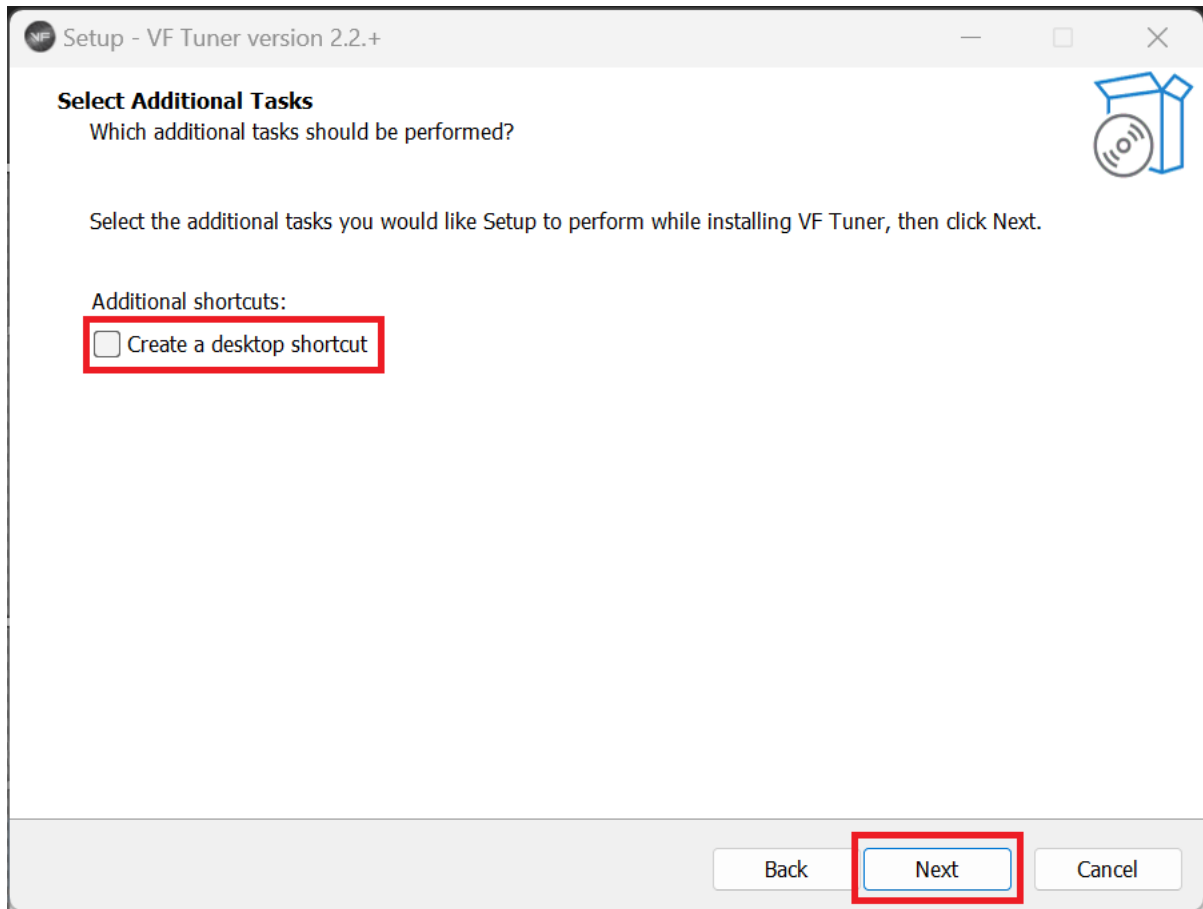
Click "Browse" if you want to install VF Tuner in another folder. We recommend leaving it as is. Click "Next" when ready.





## VF TUNER INSTALLING VF TUNER and DEVICE DRIVERS

Select the “Create a desktop shortcut” if you want a shortcut to VF Tuner on your desktop or, leave it unchecked if you do not want the shortcut on your desktop. Click “Next”.

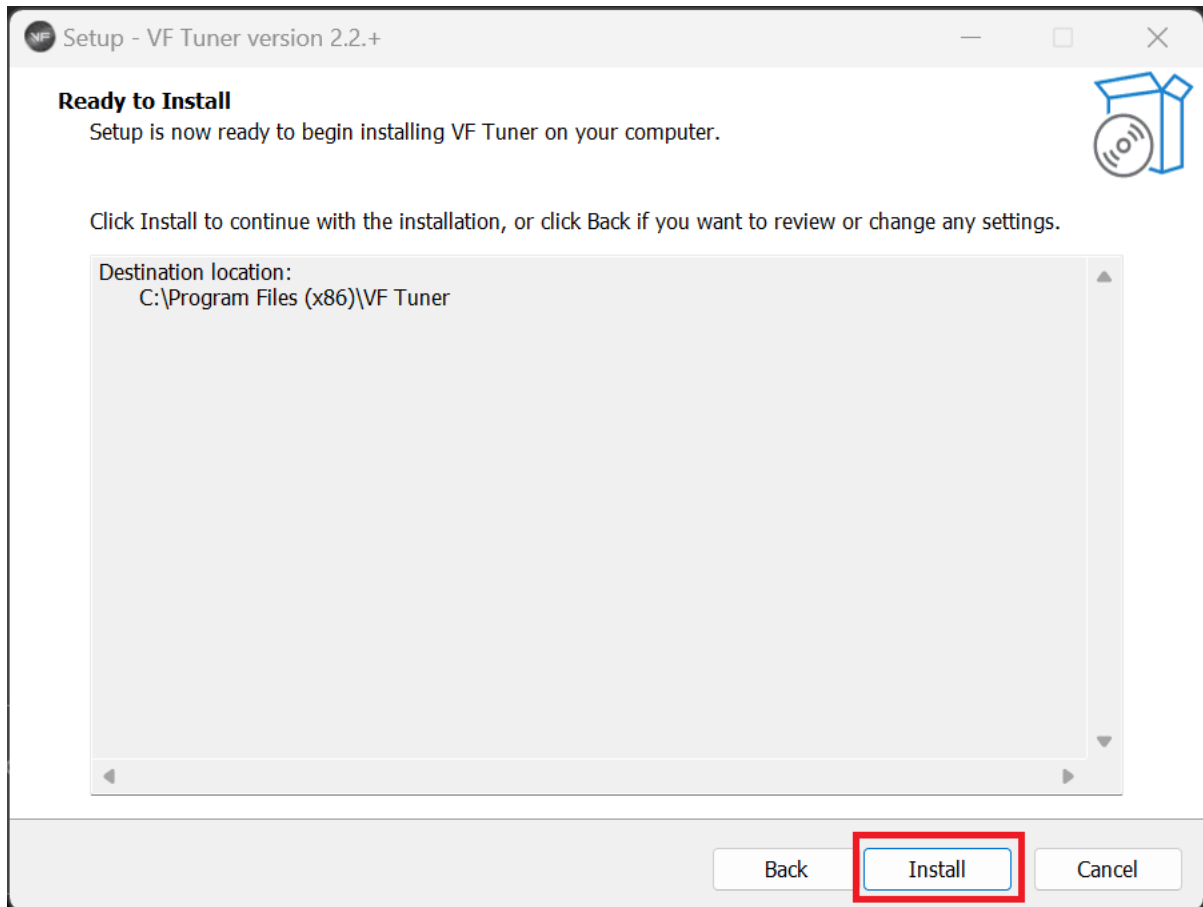




# VF TUNER

## INSTALLING VF TUNER and DEVICE DRIVERS

Click "Install"

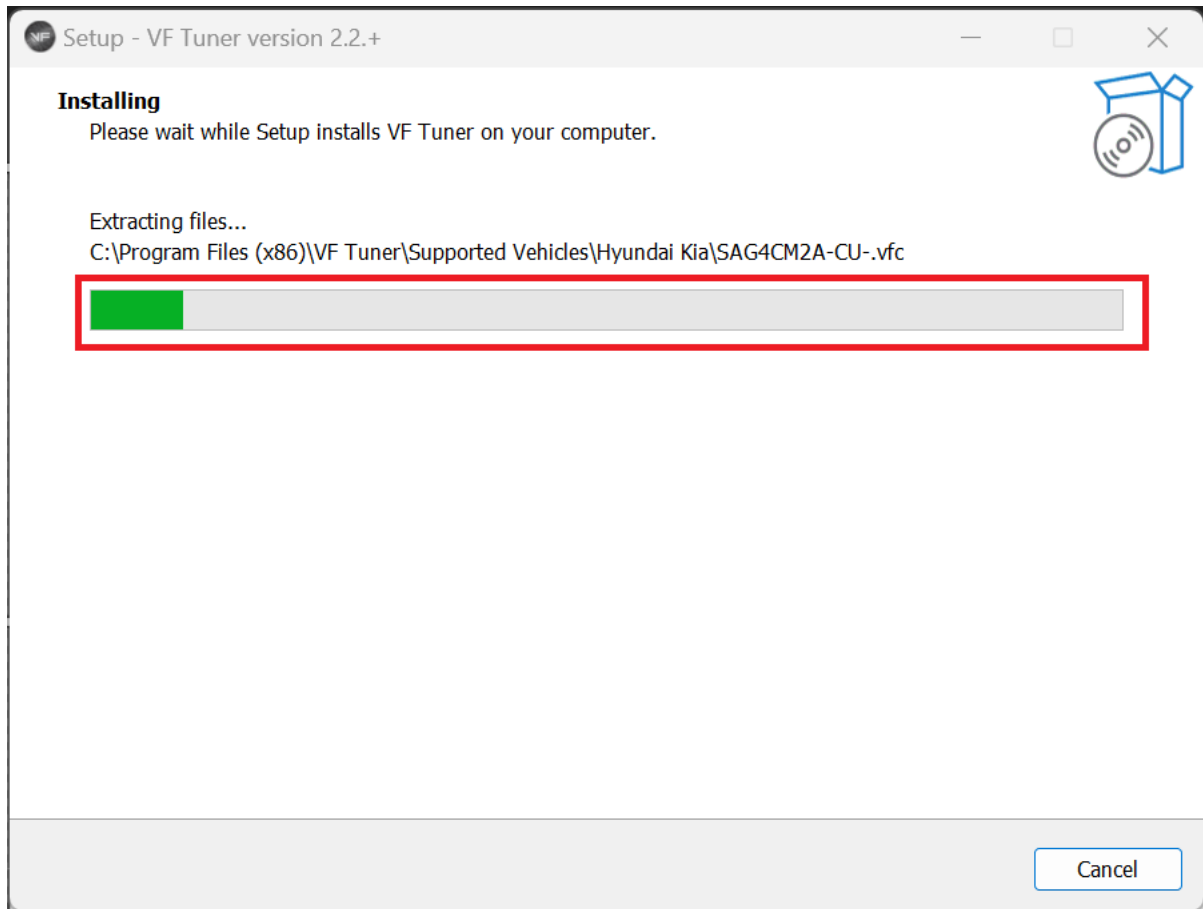




# VF TUNER

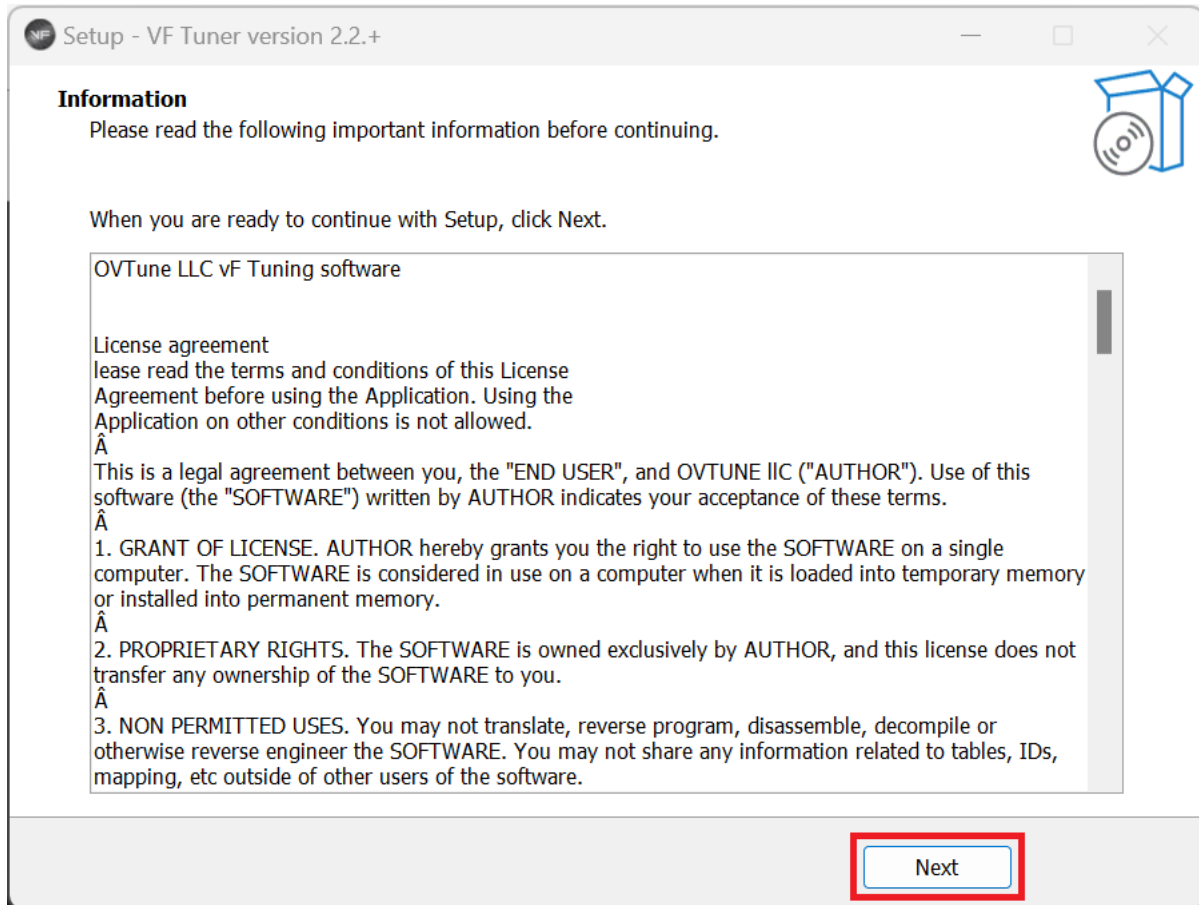
## INSTALLING VF TUNER and DEVICE DRIVERS

Let the process finish





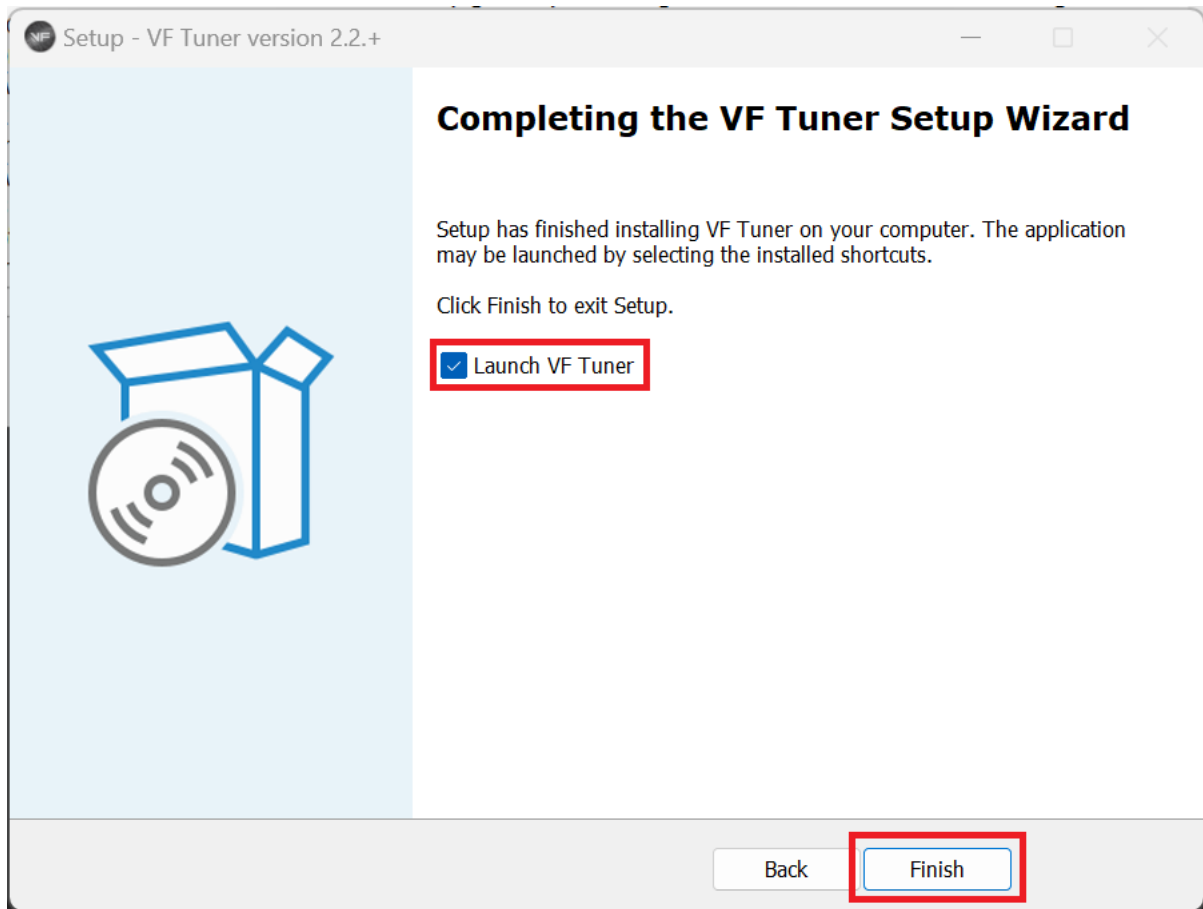
Click "Next"





## VF TUNER INSTALLING VF TUNER and DEVICE DRIVERS

Select "Launch VF Tuner" if you want to open/run VF Tuner or uncheck it to launch it later. Click "Finish".



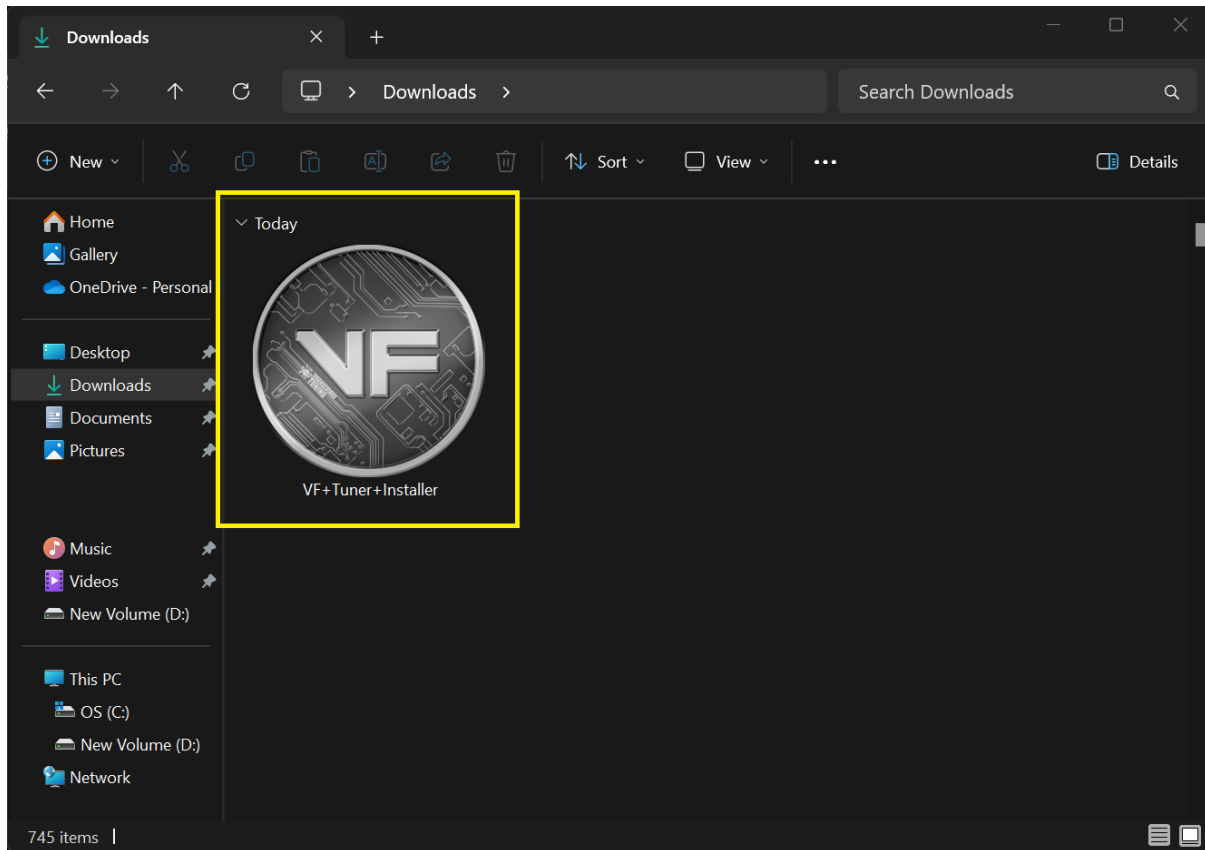




# VF TUNER

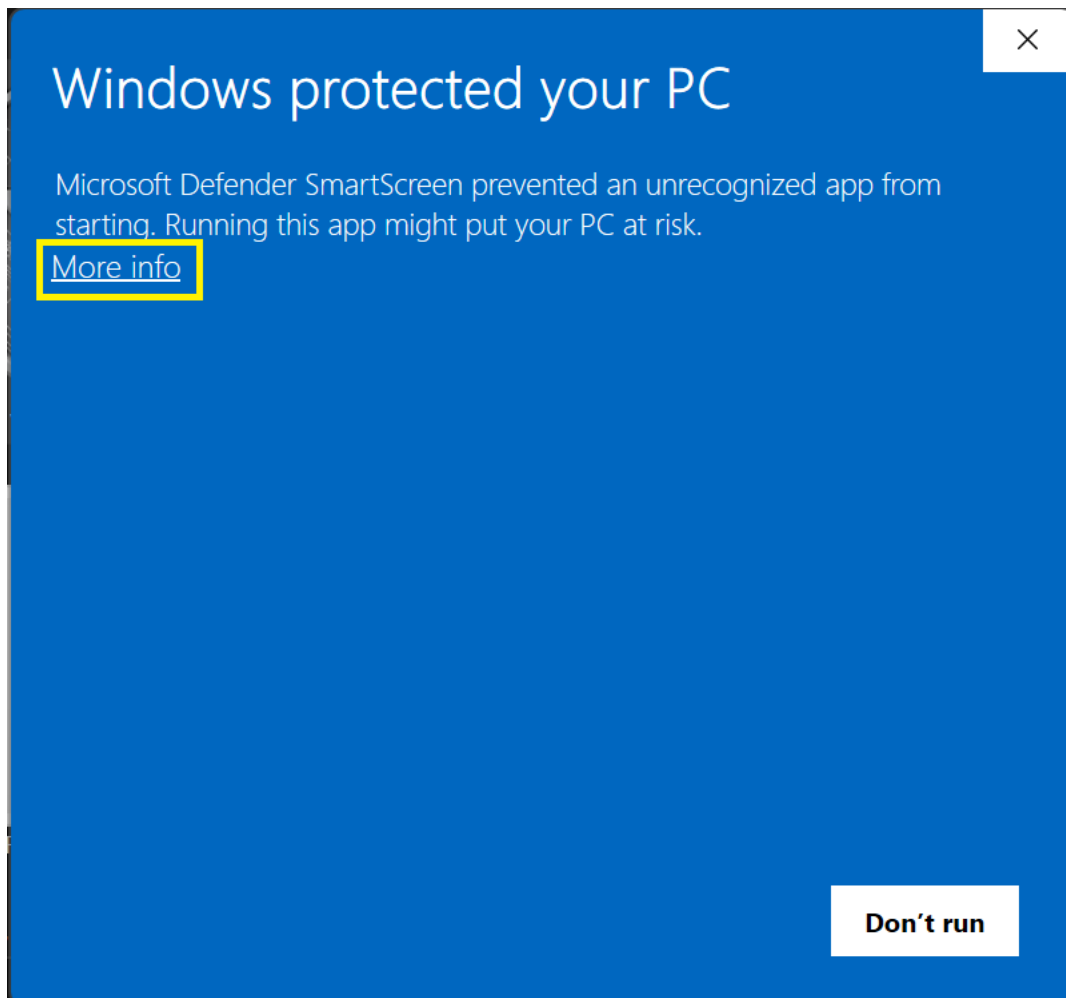
## INSTALLING VF TUNER and DEVICE DRIVERS

### Legacy Device / v1.7.X+



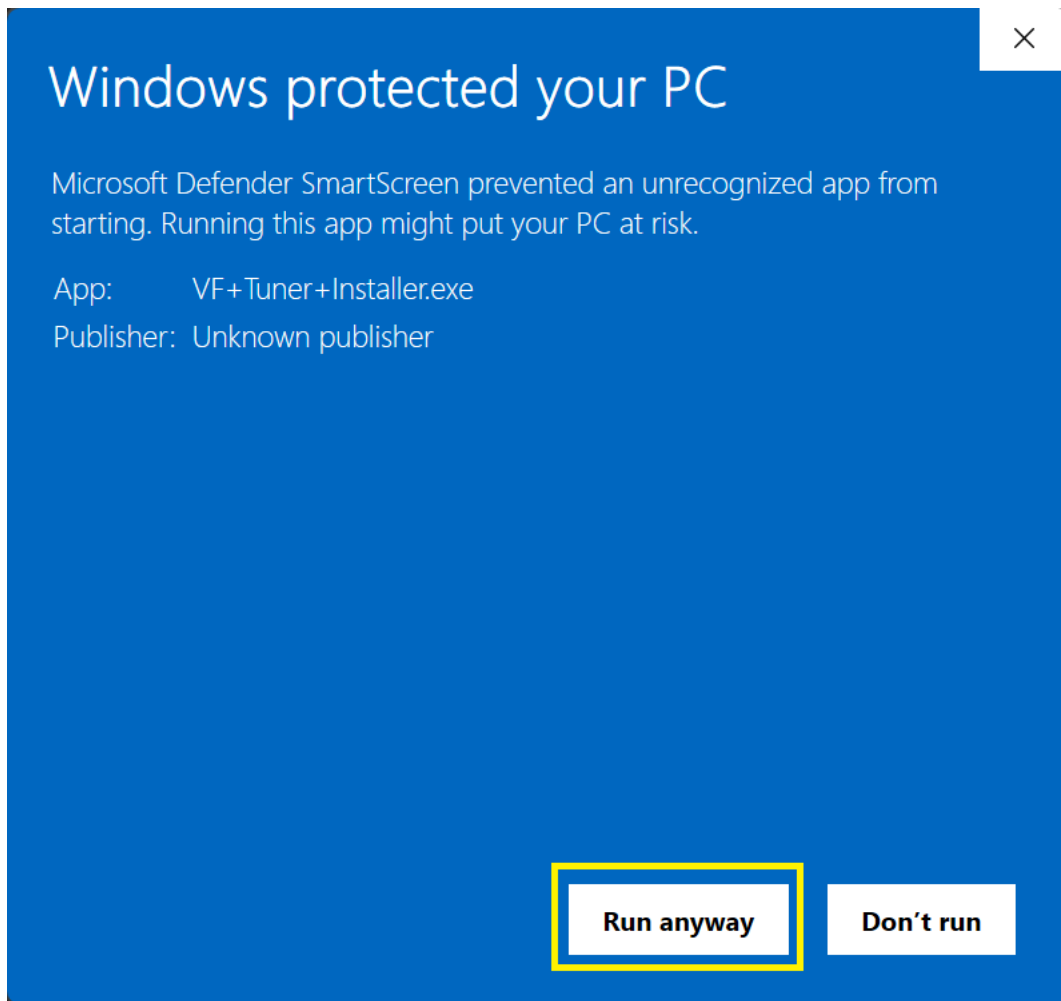


Click "More info"



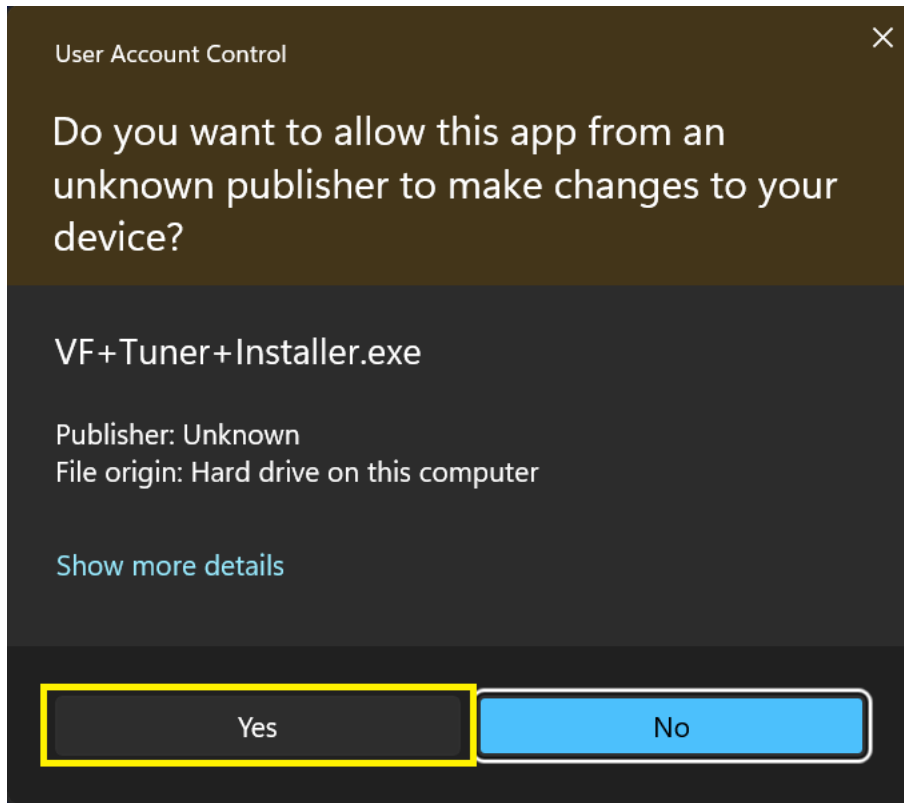


Click "Run anyway"





Click "Yes"

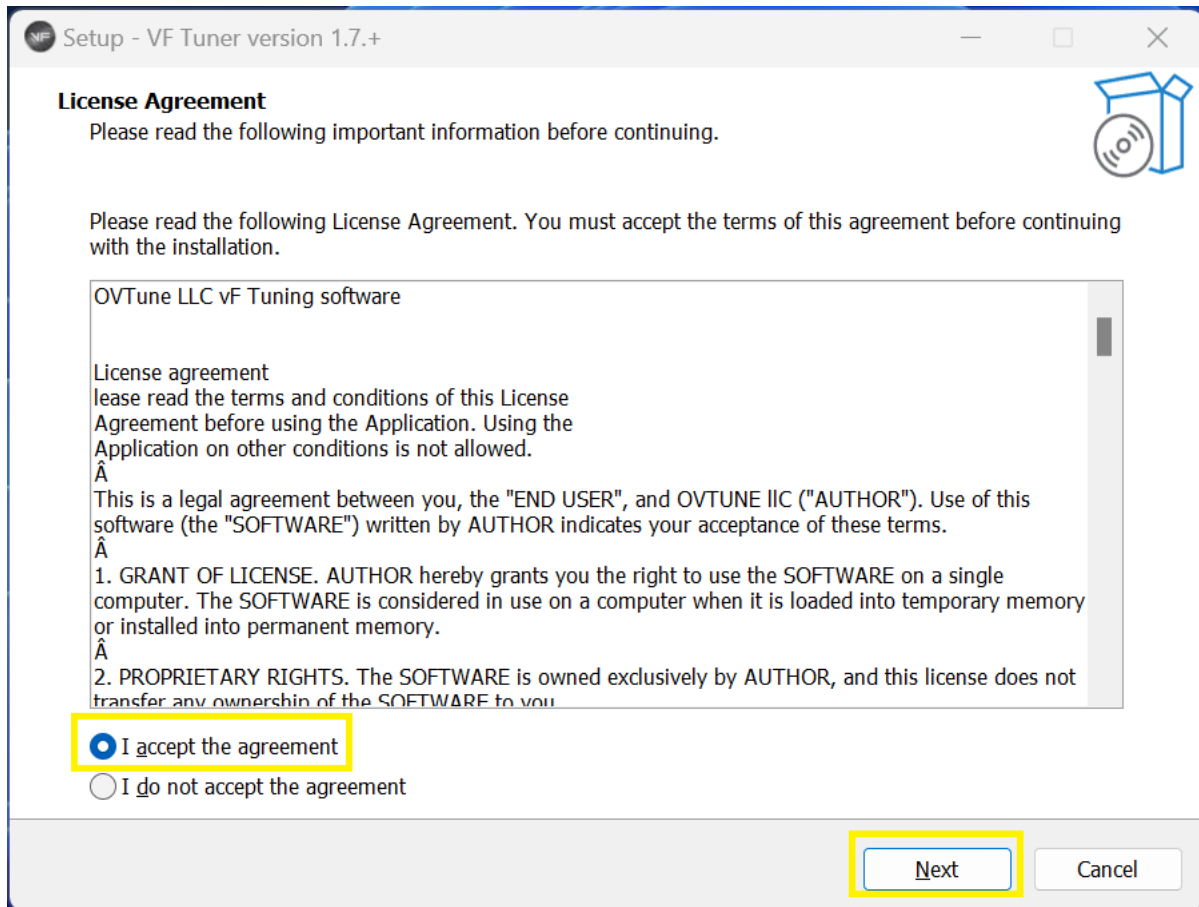




# VF TUNER

## INSTALLING VF TUNER and DEVICE DRIVERS

Make sure the “I accept the agreement” is selected, then click “Next”

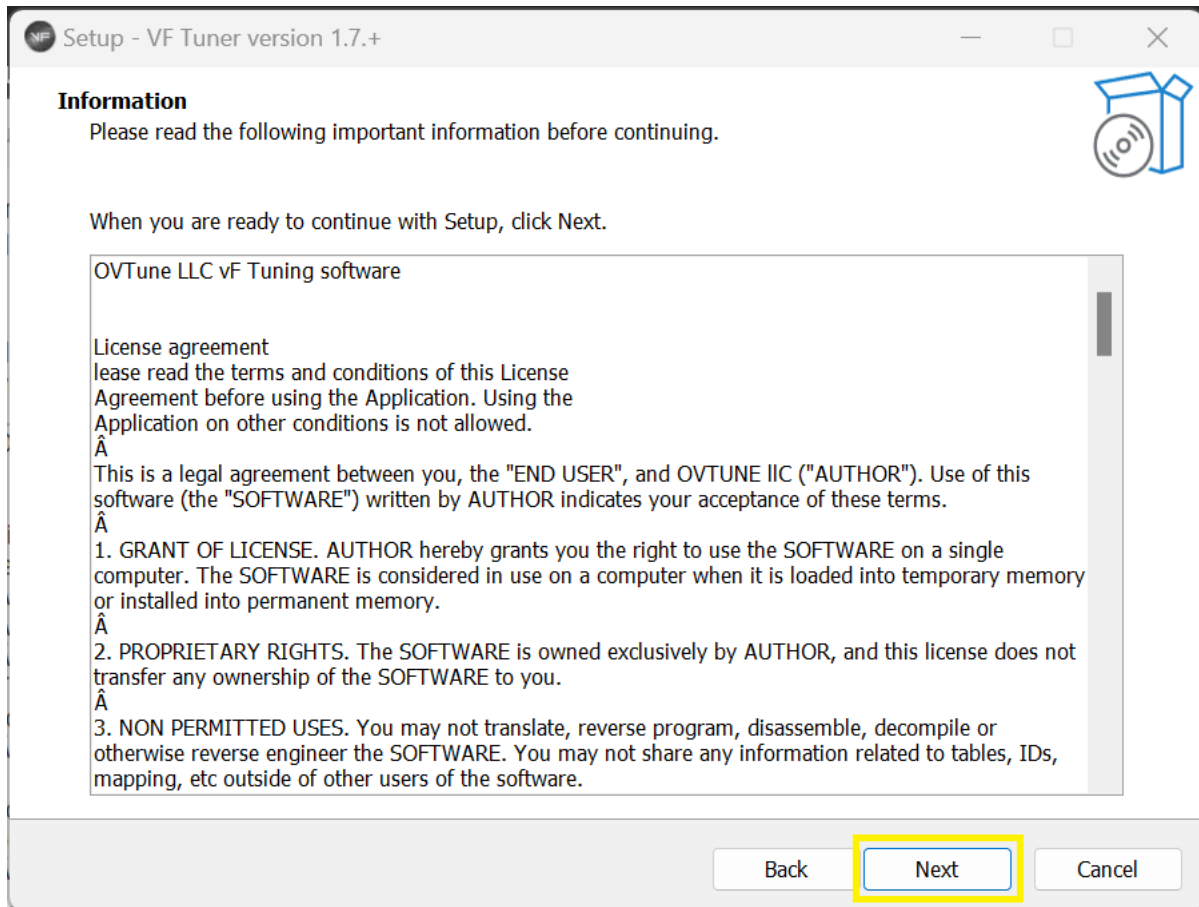




# VF TUNER

## INSTALLING VF TUNER and DEVICE DRIVERS

Click "Next"

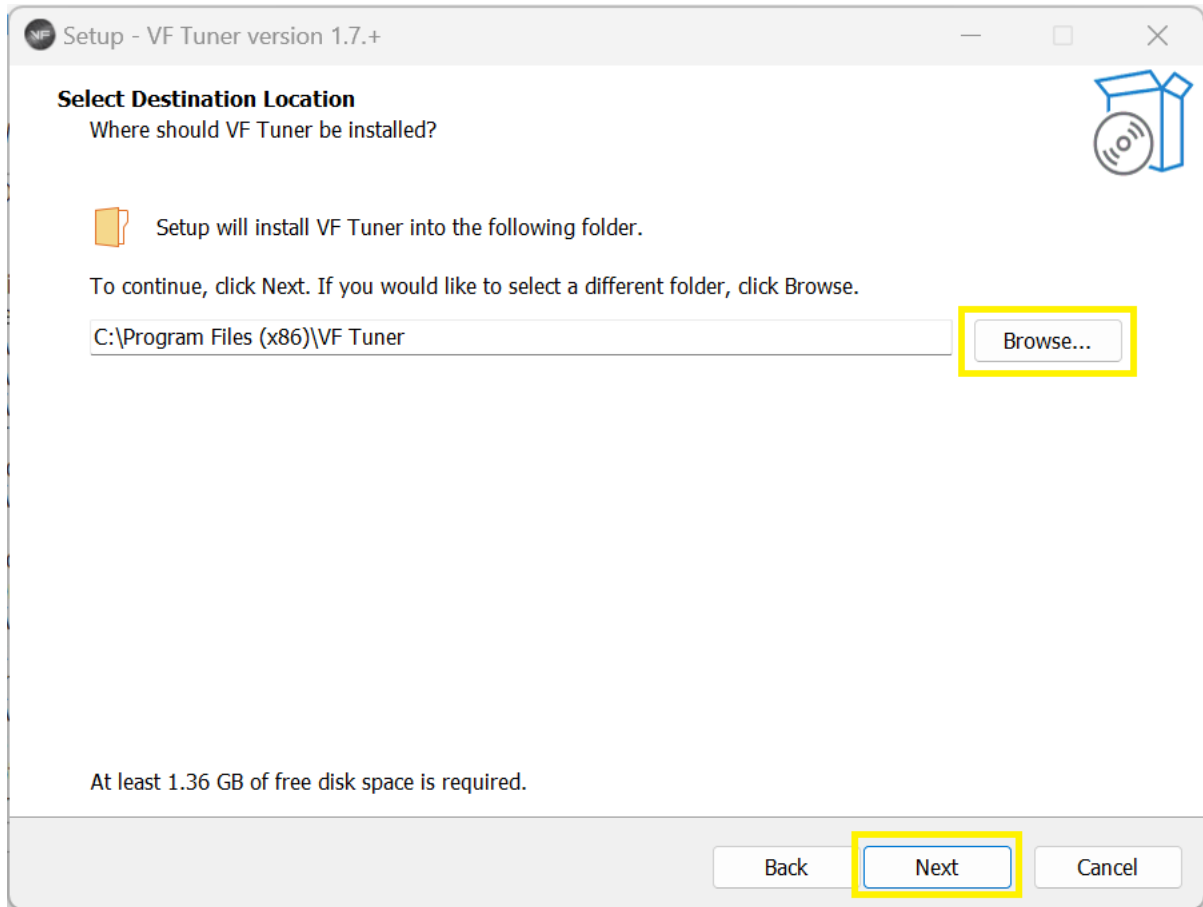




# VF TUNER

## INSTALLING VF TUNER and DEVICE DRIVERS

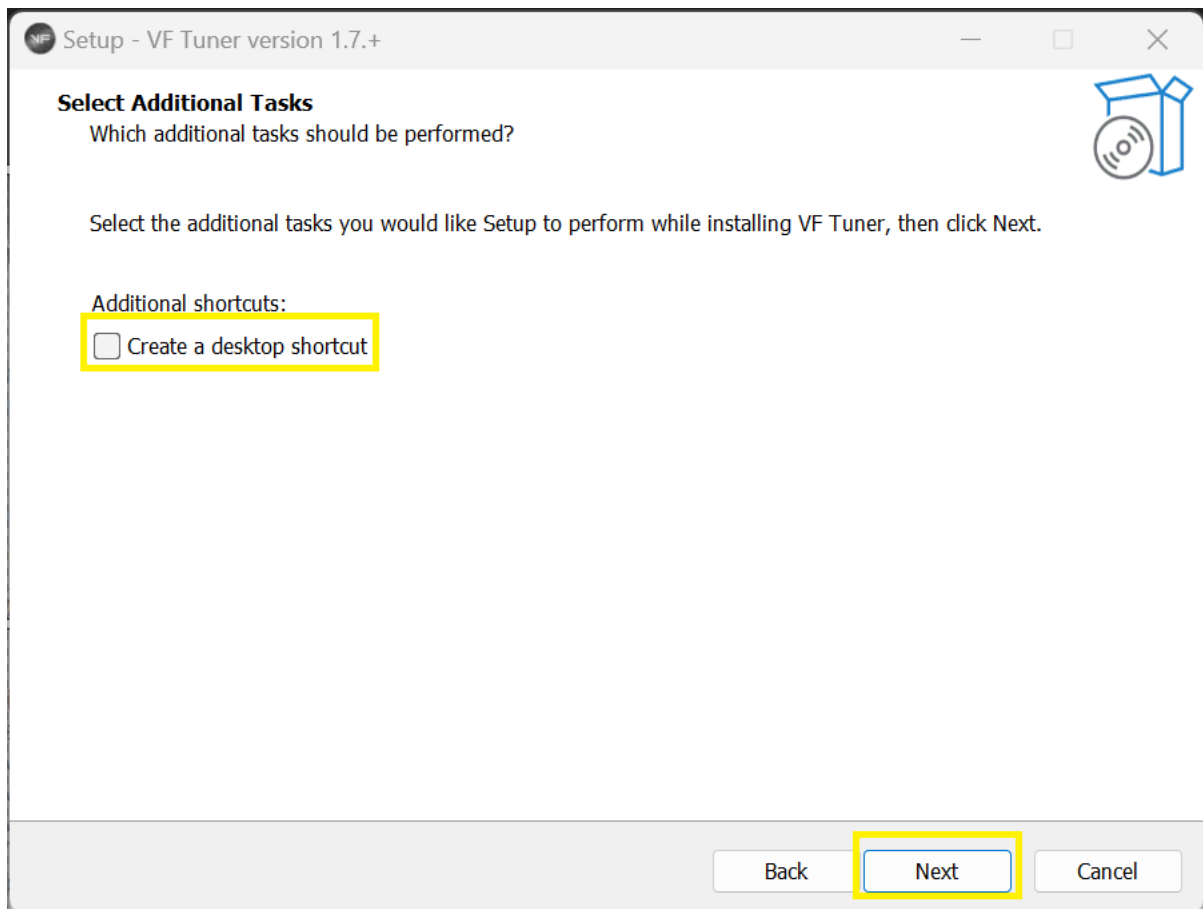
Click “Browse” if you want to install VF Tuner in another folder. We recommend leaving it as is. Click “Next” when ready.





## VF TUNER INSTALLING VF TUNER and DEVICE DRIVERS

Select the “Create a desktop shortcut” if you want a shortcut to VF Tuner on your desktop or, leave it unchecked if you do not want the shortcut on your desktop. Click “Next”.



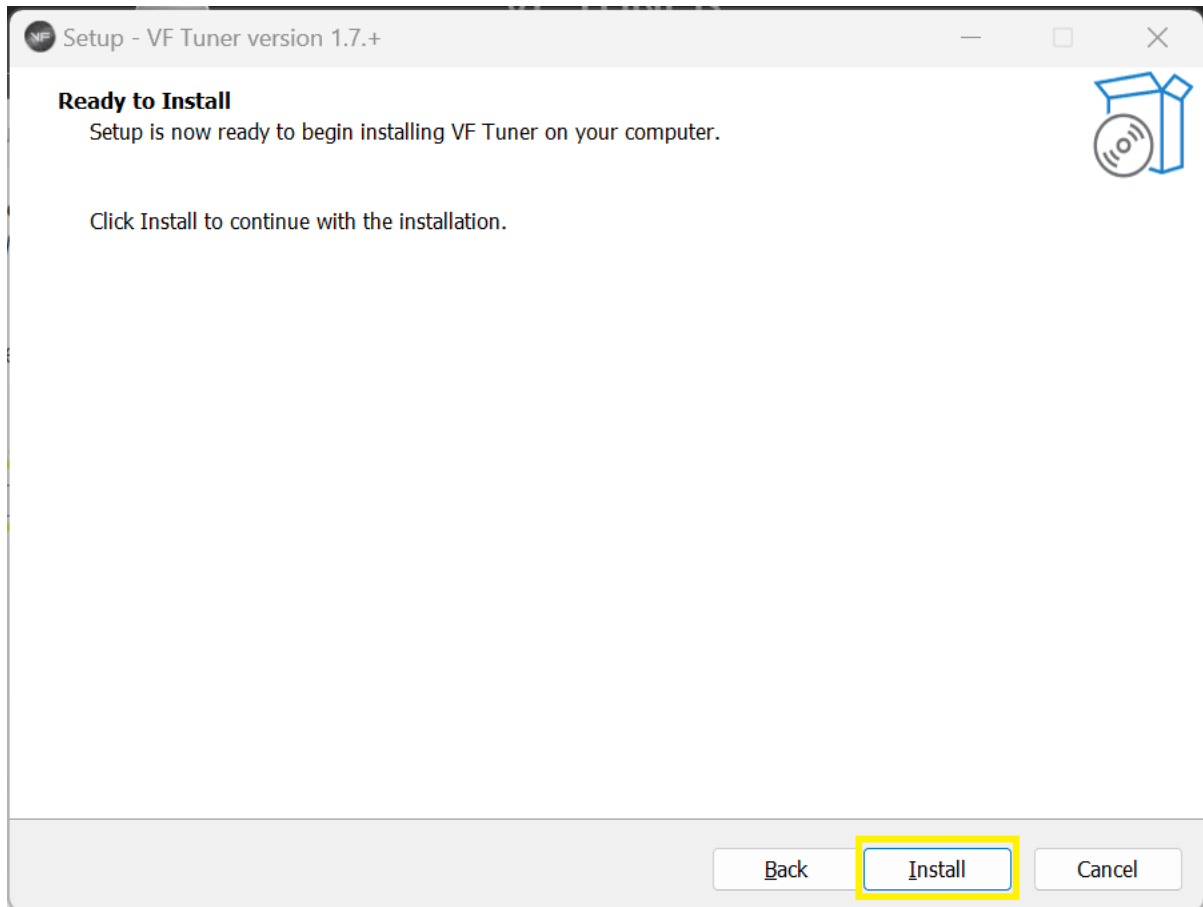




# VF TUNER

## INSTALLING VF TUNER and DEVICE DRIVERS

Click "Install"

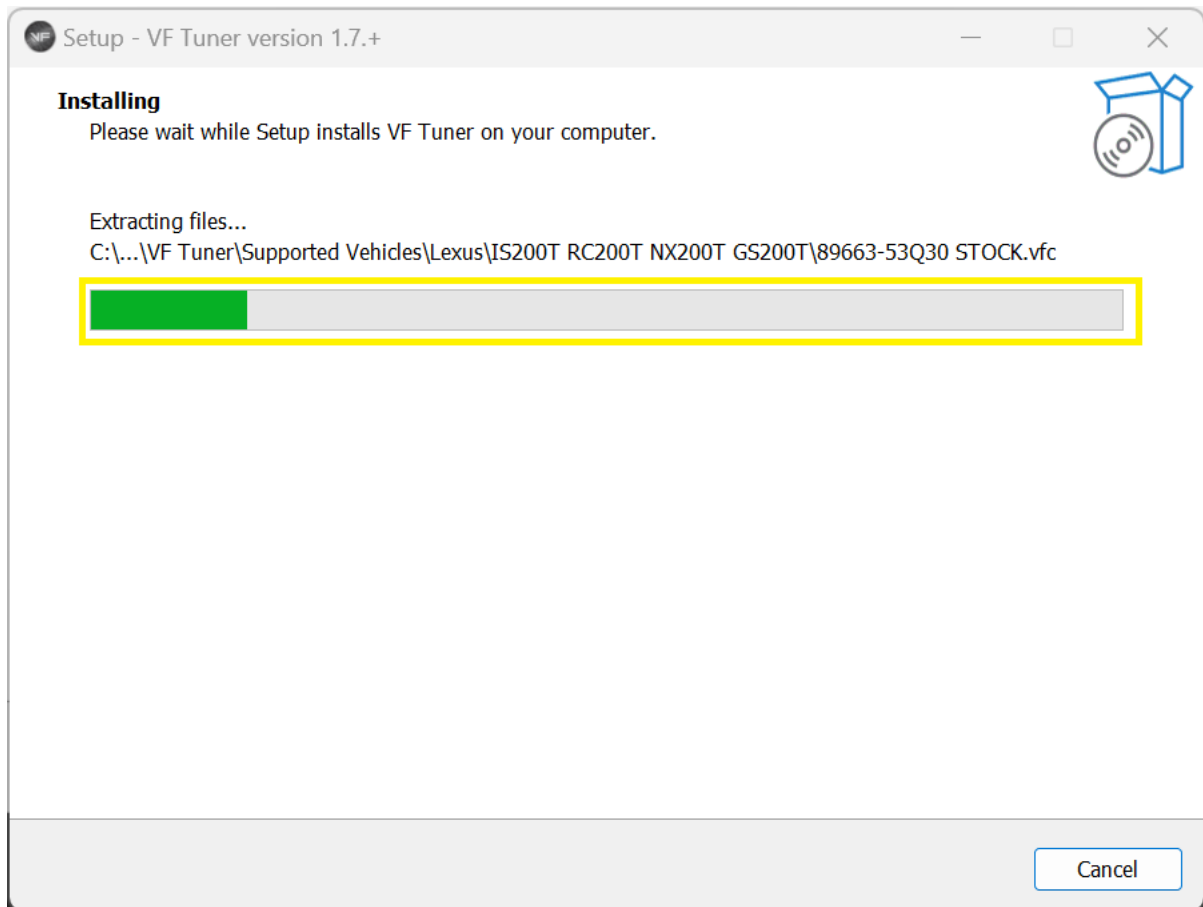




# VF TUNER

## INSTALLING VF TUNER and DEVICE DRIVERS

Let the process finish

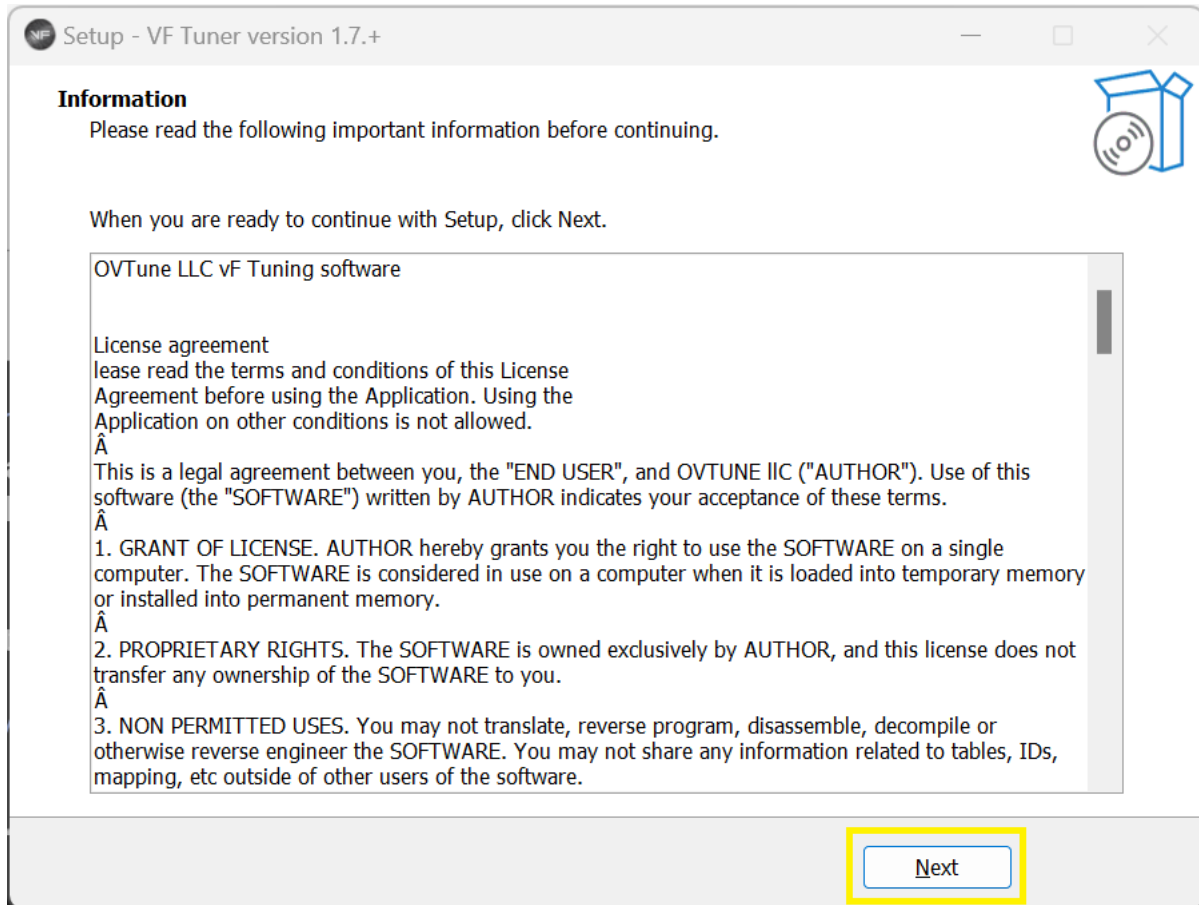




# VF TUNER

## INSTALLING VF TUNER and DEVICE DRIVERS

Click "Next"

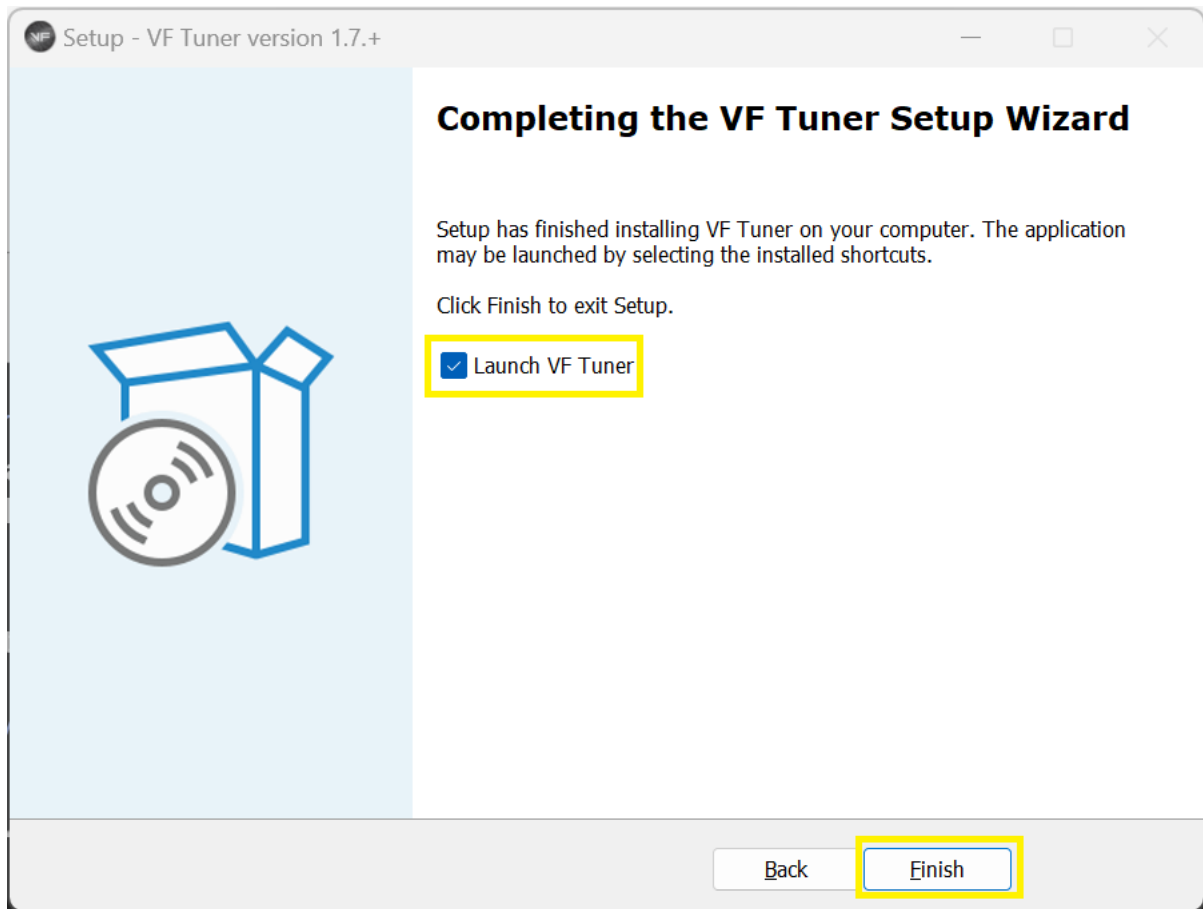




# VF TUNER

## INSTALLING VF TUNER and DEVICE DRIVERS

Select "Launch VF Tuner" if you want to open/run VF Tuner or uncheck it to launch it later. Click "Finish".





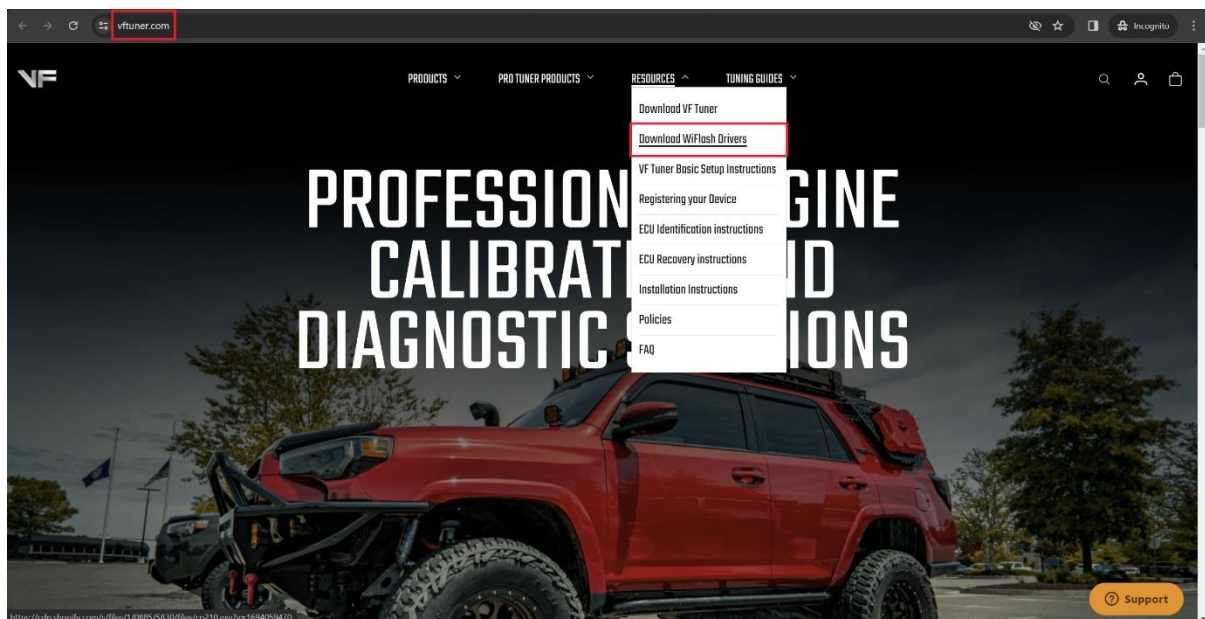
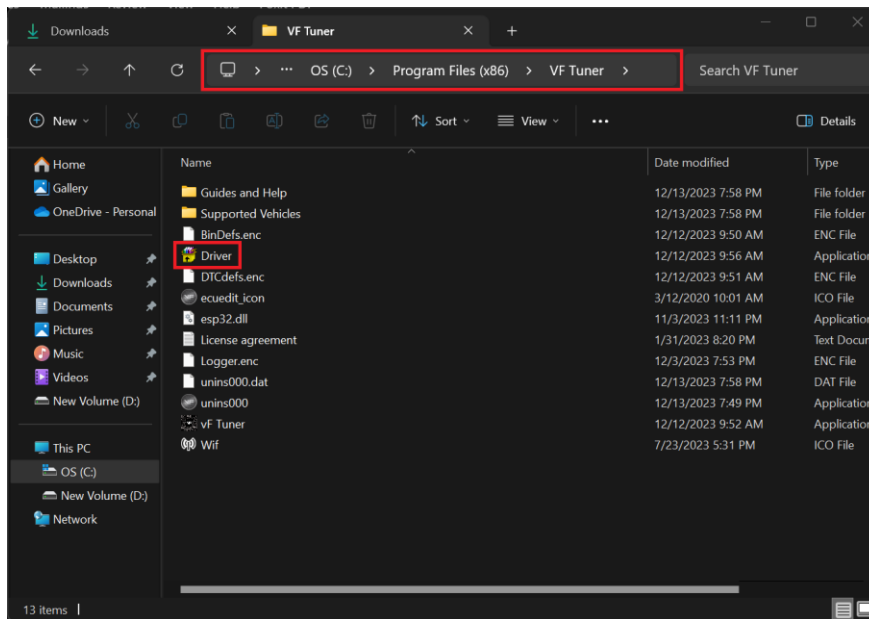
# VF TUNER INSTALLING VF TUNER and DEVICE DRIVERS

6) Installing the drivers of your WiFlash/Legacy device. Follow the screenshots below.

## WiFlash Device / V2.0+

Find the installation folder of your VF Tuner (see page XX to recall the folder name). Look for the “Driver” installer and double click on it to run the driver installer.

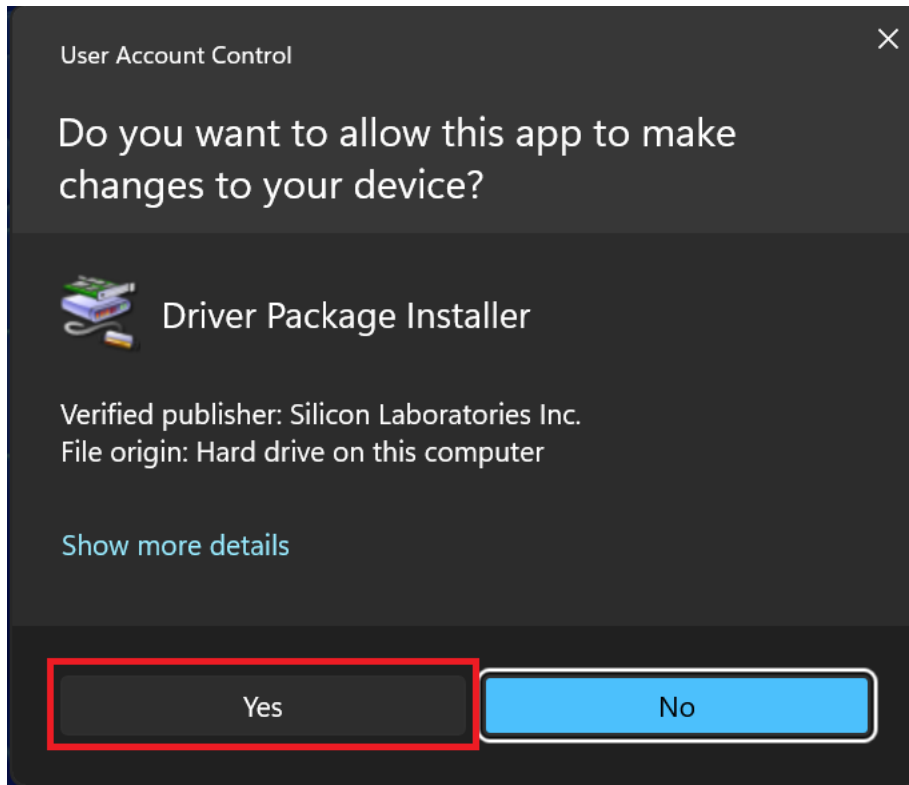
IF the “Driver” installer is not present. It may have been automatically removed by Windows or your anti-virus software. In this case, please go to [www.vftuner.com](http://www.vftuner.com) and under the “Resources” drop-down menu, there’s a “Download WiFlash Drivers” option.



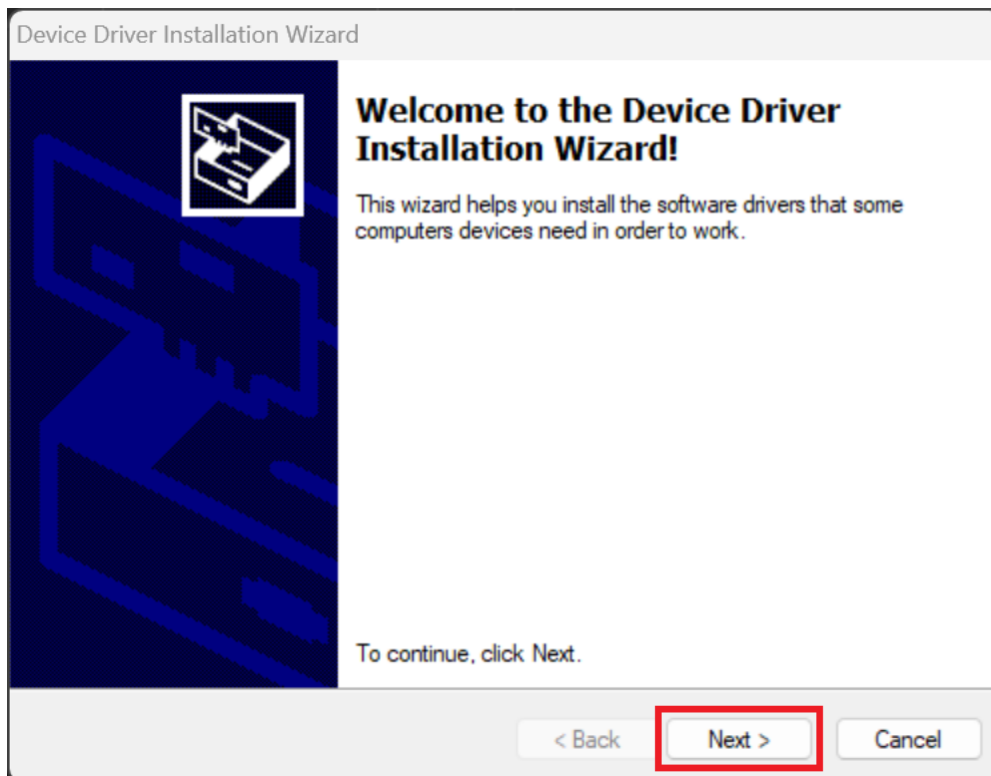
Please send all your questions to: [support@ovtune.zendesk.com](mailto:support@ovtune.zendesk.com)



Click "Yes"

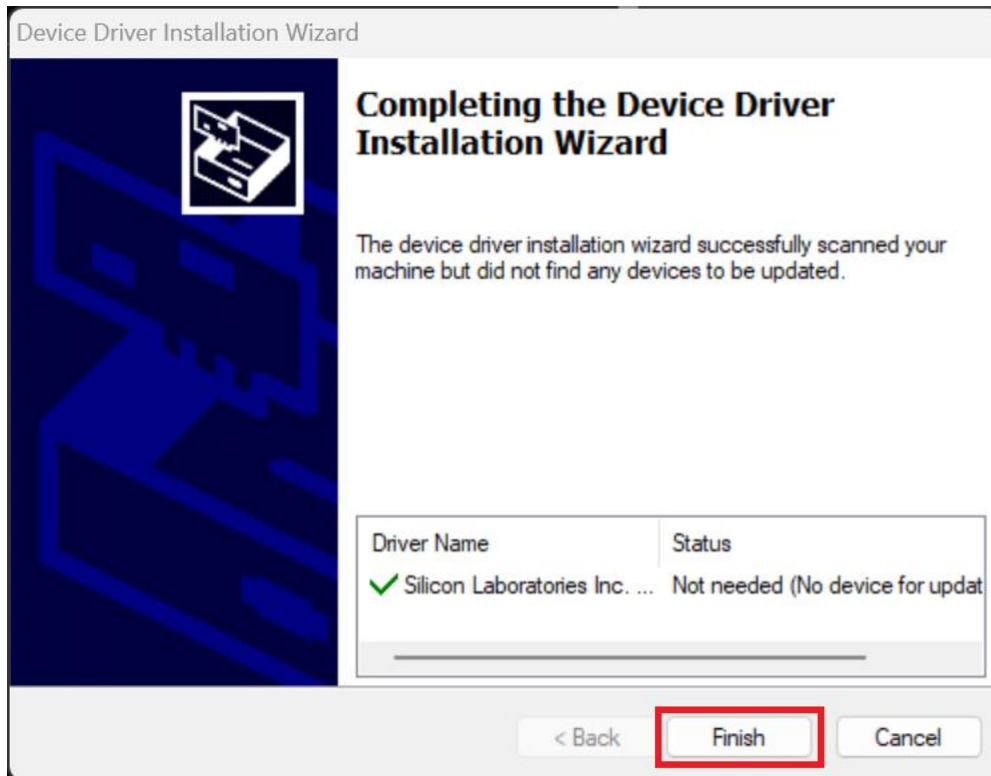


Click "Next" and follow the next steps.





Click "Finish"



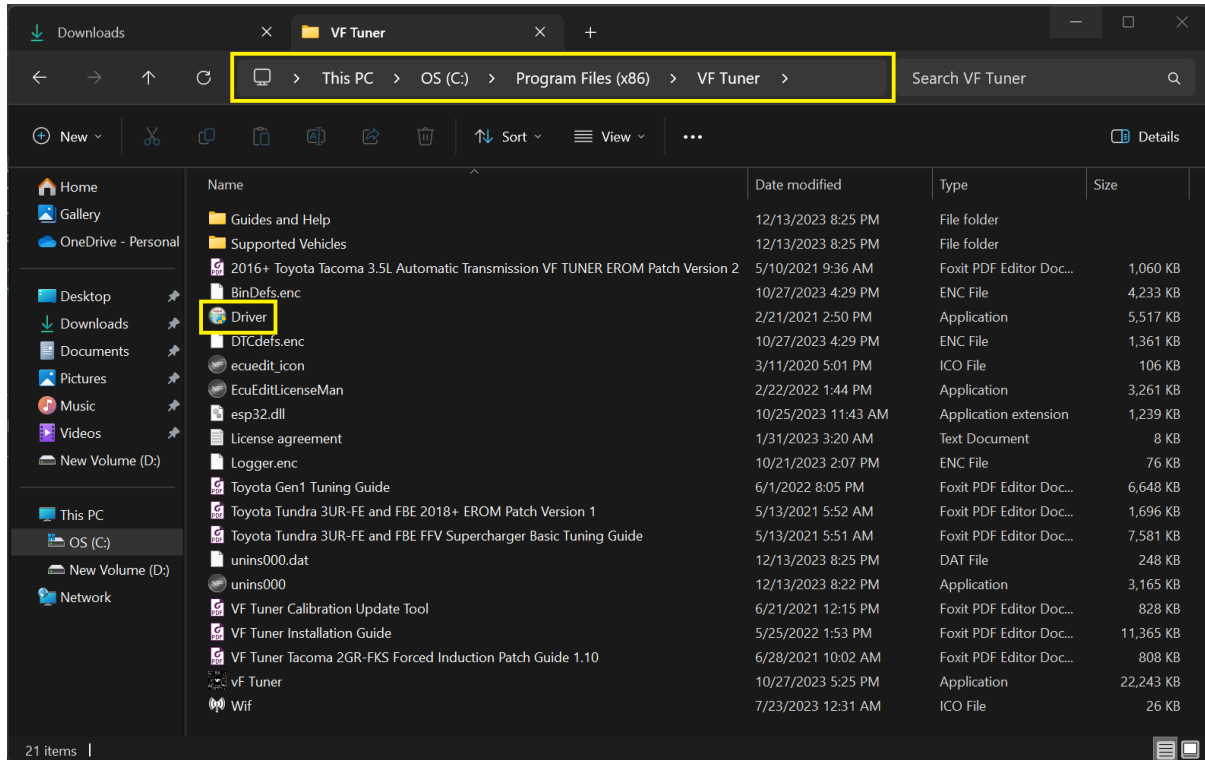


# VF TUNER

## INSTALLING VF TUNER and DEVICE DRIVERS

### Legacy Device / V1.7.X+

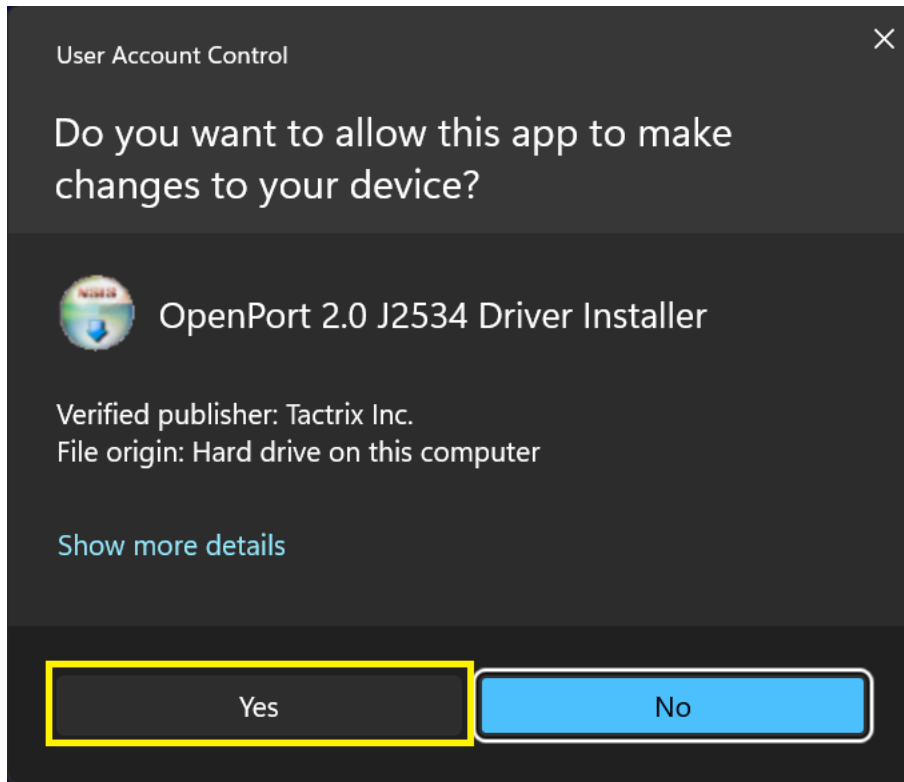
Find the installation folder of your VF Tuner (see page XX to recall the folder name). Look for the “Driver” installer and double click on it to run the driver installer.



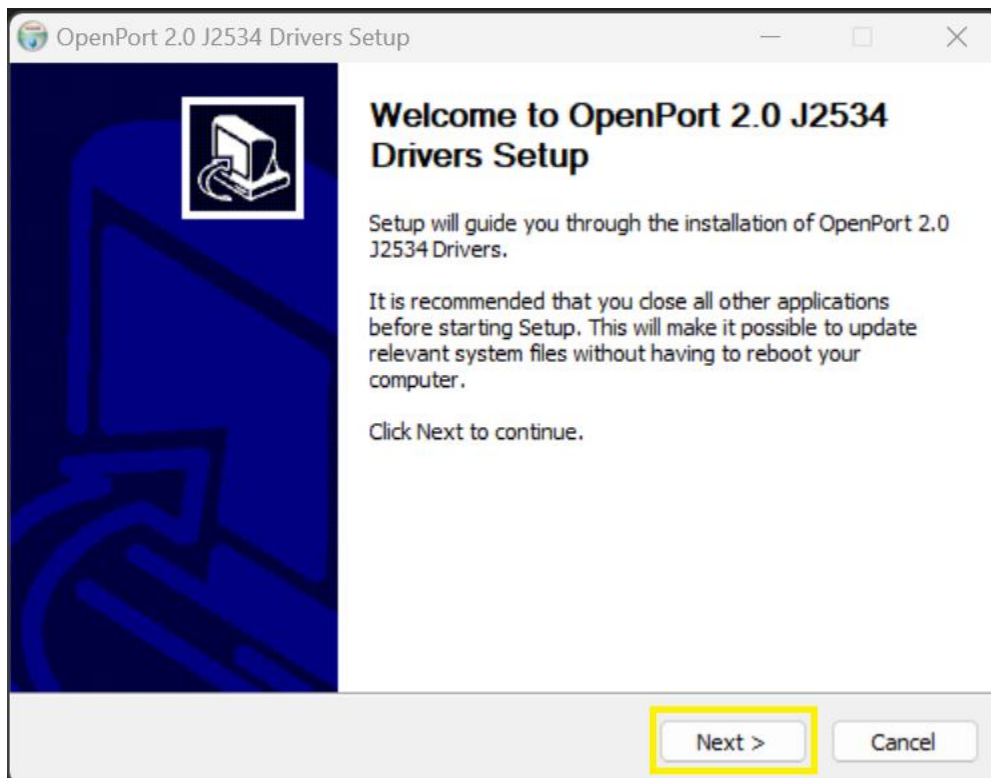




Click "Yes"

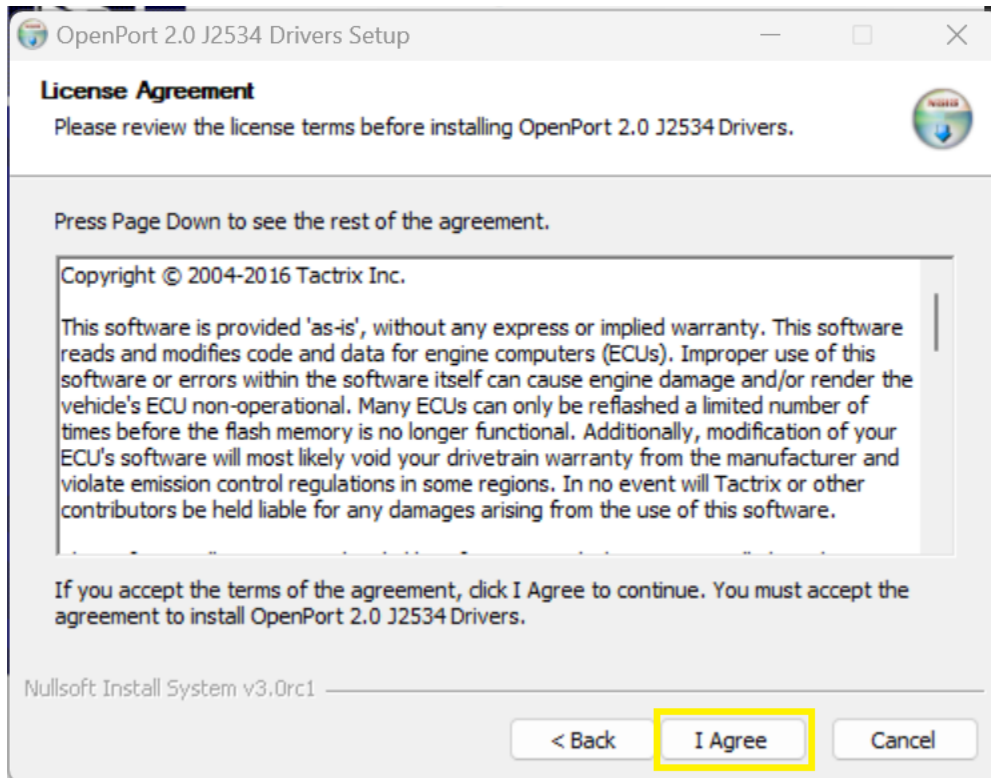


Click "Next"

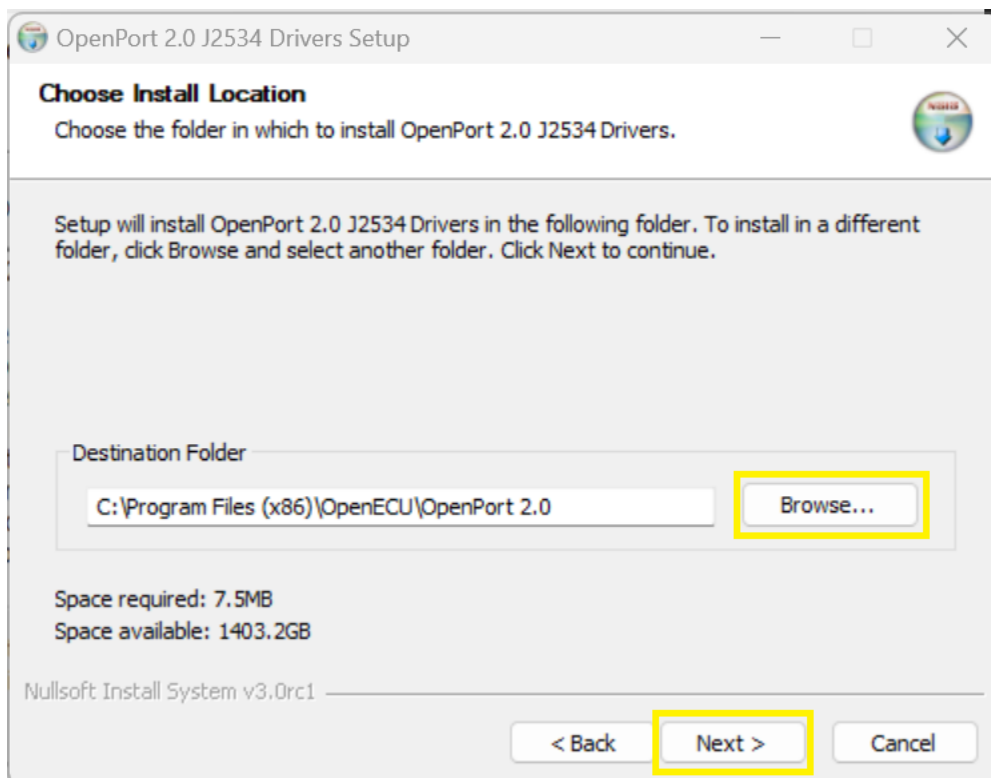




Click "I Agree"

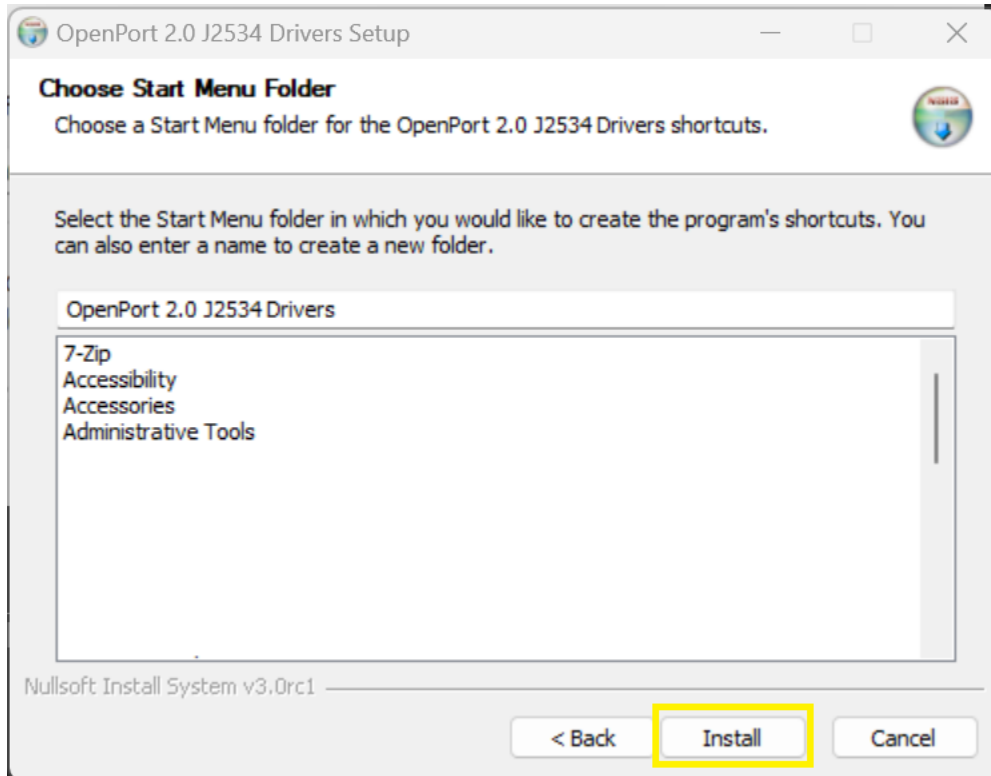


Click "Browse" if you want to install the driver in another folder. We recommend leaving it as is. Click "Next" when ready.

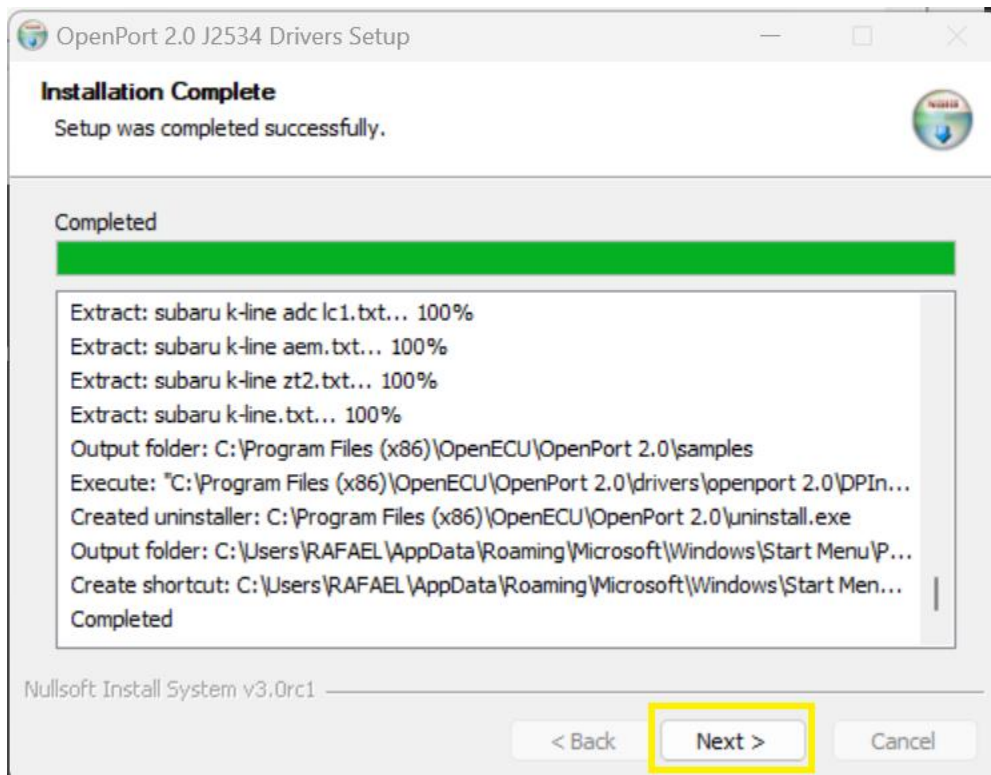




Click "Install"



Let the install finish and then click "Next"





Click "Finish"

