

OVTune Toyota Flash Manager - Tacoma 3.5L Instructions v4.1



**These instructions will cover the
entire setup process for our
flashing kit with our new dongle-
less setup**

**note if you own a kit with the
DONGLES (USB STICK, purple, or
mini - black) THESE
INSTRUCTIONS ARE NOT FOR**

YOUR KIT. PLEASE SEE OUR DONGLE SETUP INSTRUCTIONS.

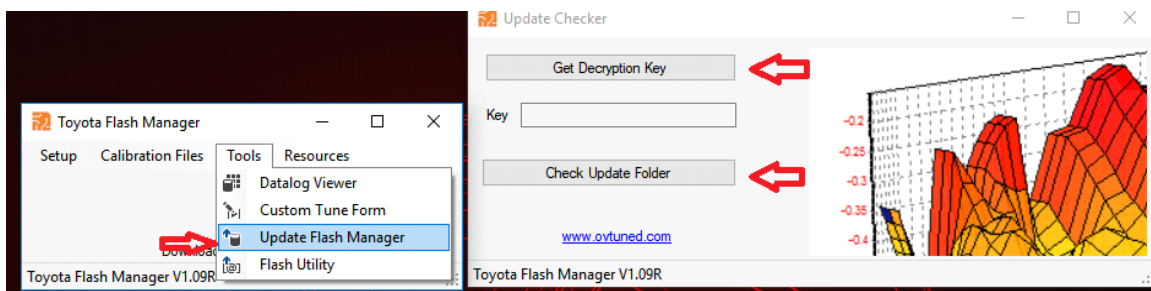
To Begin download our Toyota Flash Manager Software:

https://cdn.shopify.com/s/files/1/0885/5830/files/Toyota_Flash_Manager_V1.09R_0eb6e033-9bb7-42f8-897d-3f7439cb3098.exe?17680786388467004585

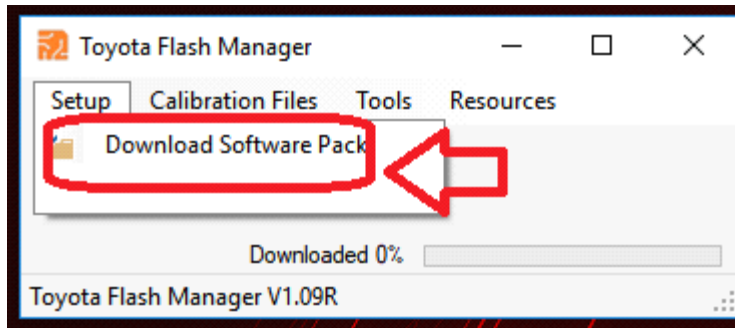
After you have downloaded flash manager, ensure you are on the latest version by running our updater.

Open the updater form, build an encryption key, then click check for updates.

This will bring you to a page to enter your decryption key. Inside will be the latest version Flash manager



Once you have ensured you are up to date, download all the tools and install the drivers (openport 2.0 drivers)



Then, run the program "P5Flash.exe (ToyFlash 1.0.0)"

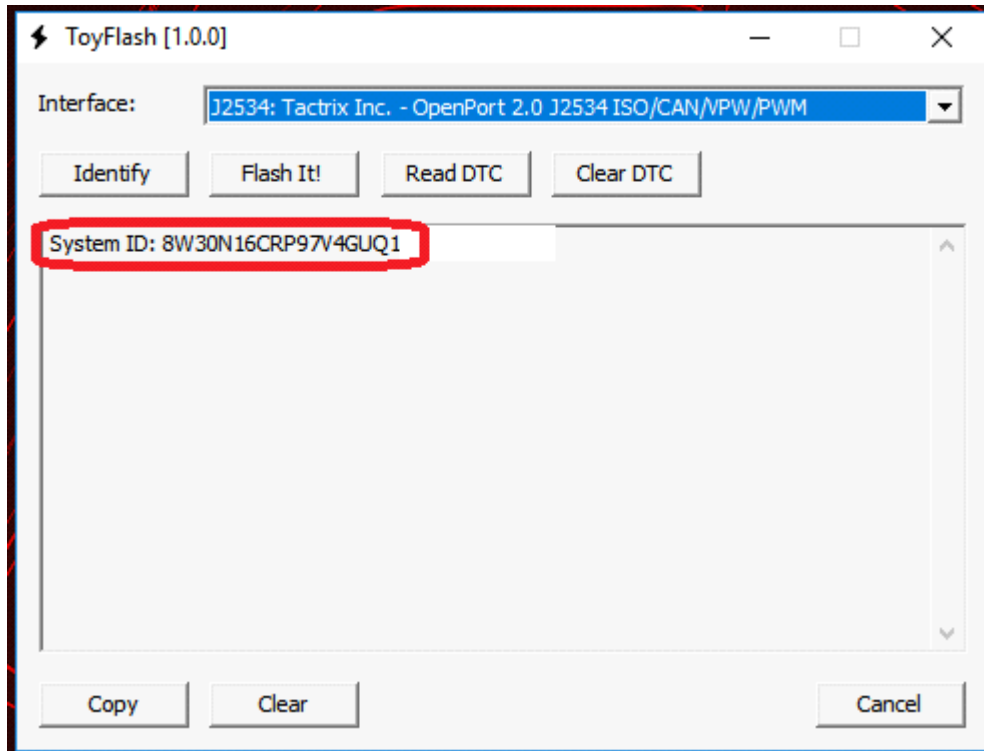
NOTE, if the file gets deleted, or will not open, etc. This means your anti-virus is interfering with the file. You need to at minimum disable WINDOWS DEFENDER.

TRUCK FLASHING LICENSE

Next, your software will need to be registered to you.

IMPORTANT: Note this software can only be registered ONE TIME to ONE computer (no expiration on use). Ensure that the computer you register your license on is RELIABLE and easily / long term accesible. WINDOWS XP IS NOT SUPPORTED. Virtual windows / Mac VM NOT supported

EMAIL US YOUR SYSTEM ID CODE:



email to:

support@ovtune.zendesk.com

IN YOUR EMAIL PLEASE INCLUDE:

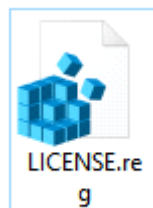
YOUR NAME: ex **JOHN DOE**

YOUR ORDER NUMBER: ex **9999**

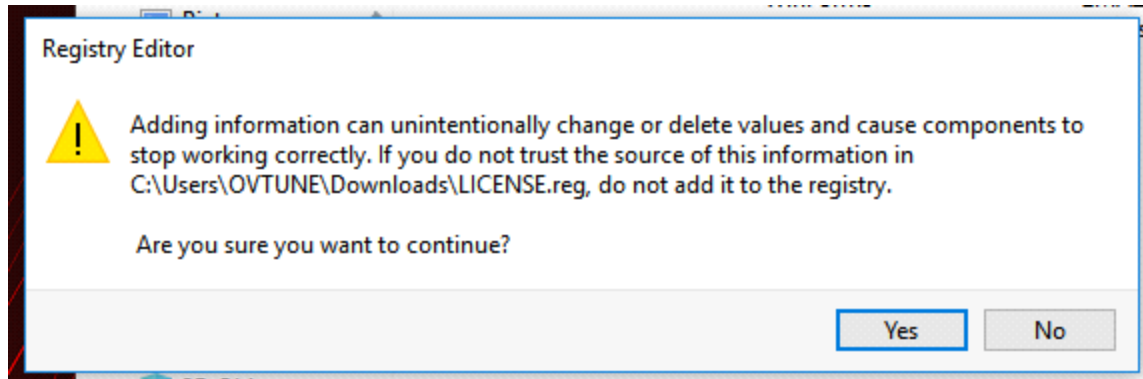
YOUR TRUCK DETAILS: ex **2017 Tacoma TRD auto 2x4**

We will send you a registry file.

Double click this file and select to ADD TO REGISTRY



double click



select YES.

Registration is complete! All done!

IDENTIFYING YOUR ECU

First, connect to your truck :

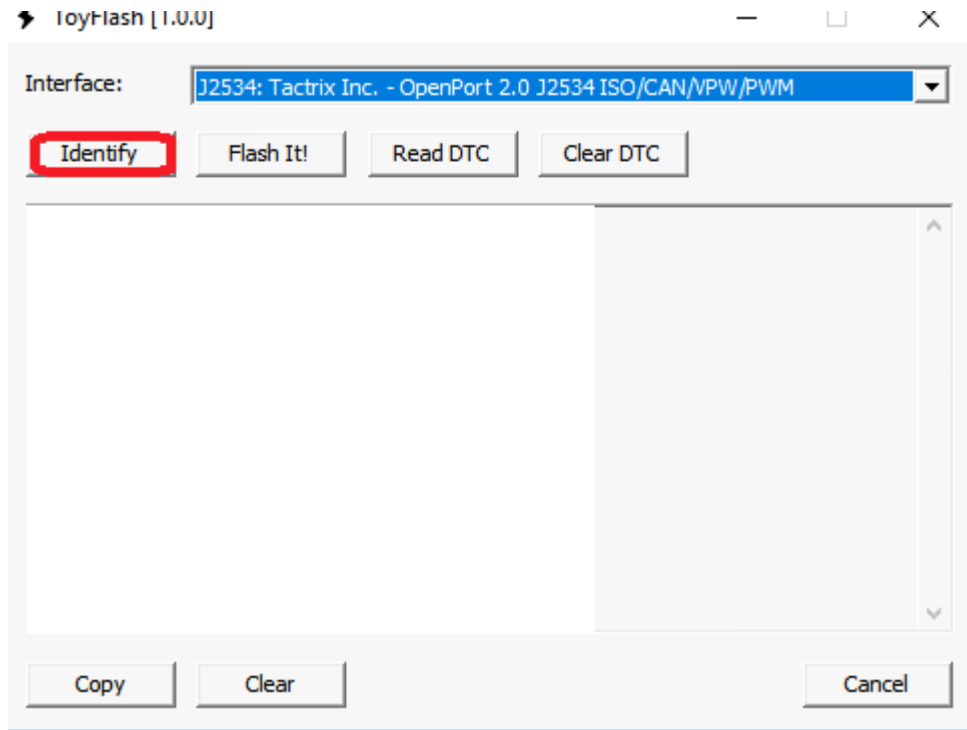
ensure your **truck is ON, engine OFF**. (not accesory mode). If you have the push button start, press it **2** times.

make sure your radio volume is low and your head lights are off (any battery drains).

Connect your OBDII cable to the trucks OBD, and plug the dongle in and run P5Flash (ToyFlash)



Check your ECU ID



(make sure truck is ON, engine OFF, if you have push start press 2 times)

Truck must be in PARK, headlights off, other battery drains OFF

Click the **IDENTIFY** Button

once the software identifies your truck, **check your ECU version (for example in this, 89663-04B03)**

Please EMAIL US THESE DETAILS (COPY THE OUTPUT INFO)

email to: support@ovtune.zendesk.com

We will then send you files prepared for your specific license.

use these files to flash the ECU/TCU

READING AND FLASHING THE ECU

Once you have downloaded the tune file for your truck, you will need to flash

it.

to Flash, reconnect to your truck Run P5Flash (ToyFlash), turn the truck on the same way you would for identification

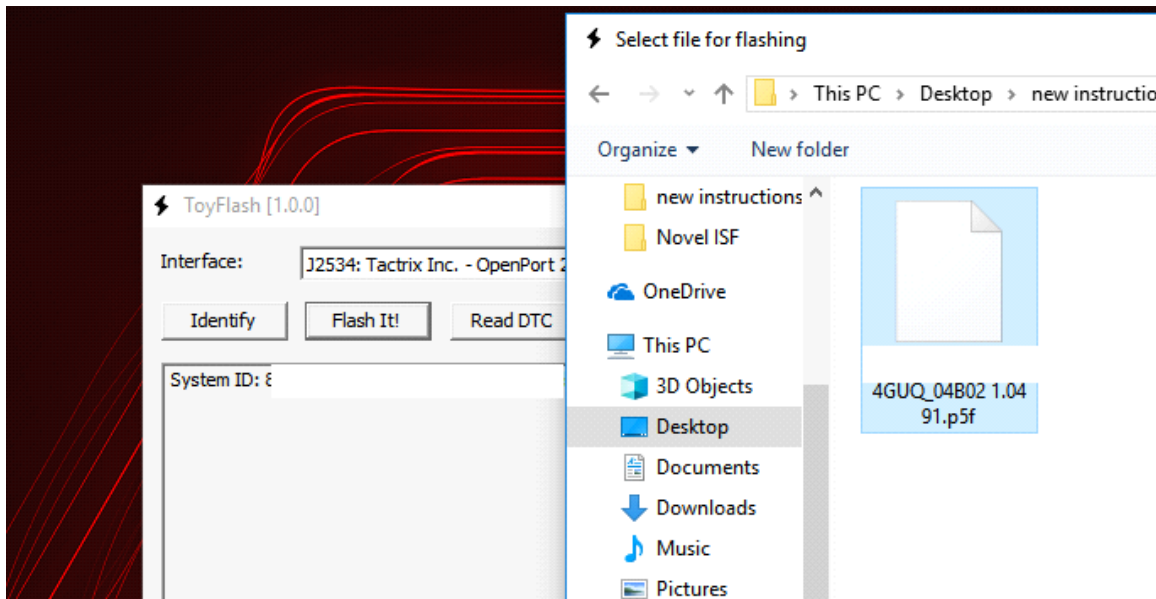


Flashing your truck

Flashing is as simple as reading. Run p5flash(Toyflash), connect to truck, truck ON engine OFF

Click the button "flash it!"

select your tune file(s)



Follow the prompts and allow the ECU to flash.

Flash the ECU file first, then load the TCU file and flash that.

Afterwards, start the truck and confirm it starts. If so, flashing is completed and has completed successfully!

NOTE, if you get Unsuccessful, make sure your truck is fully on. if it is, cycle the power. Make sure the engine is NOT running.

If you encounter an error mid-flash, simply try to flash again.

All finished.

ERRORS:

if the flash is unsuccessful, or it is stopped mid way, or if you accidentally bump the cable, unplug it, etc any reason.

Turn the truck OFF.

Turn the truck ON, WITHOUT TRYING TO START IT

Repeat the writing process above.

allow it to flash successfully.