



ORANGEVIRUS TUNNING

TOYOTA TACOMA

2GR ALPHA REFLASH CALIBRATION
INSTRUCTIONS



ORANGEVIRUS TUNING TOYOTA TACOMA

2GR ALPHA REFLASH CALIBRATION

INSTRUCTIONS



Thank you for your purchase and supporting OrangeVirus Tuning

To begin with our calibration kit, you will need to download some software, drivers and an initial licensing setup.

Our calibration kit is designed to work with a windows mobile computer / laptop / tablet with two USB port (or a USB splitter).

1x Purple Guardant Software protection key
2x Licensed reflashing software

To begin please download below:
OBDII Open Port J2534 drivers -
http://www.tactrix.com/index.php?option=com_content&view=category&layout=blog&id=38&Itemid=61

Guardant software protection drivers:
<https://www.guardant.com/support/download/drivers/>

Guardant software license installer (grdTRU.exe)
<https://drive.google.com/file/d/0Bw4PsFEXf-1SZjNFdS0tRVICMmM/view?usp=sharing>

PCMFlash installer:
<https://yadi.sk/d/vr2lgETc3GZW6b>

To begin please plug in your purple guardant USB to your computer:



Next run the guardant program (make sure you have installed the drivers)

DONGLE DRIVERS

Dongle drivers are required for the normal operation of a protected application. They act as a sort of “broker” between the application and its hardware protection (dongle). Therefore, after the installation of the protected software, make sure that the Guardant drivers have been installed as well and are working correctly.

↓ [Guardant Drivers](#)

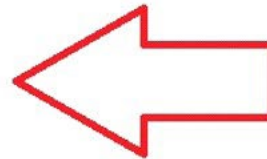
Driver version: 7.0.190, WHQL-certified on 04.06.2015

Dongle models: All Guardant dongles

Supported OS: MS Windows XP to Windows 10

Guardant drivers

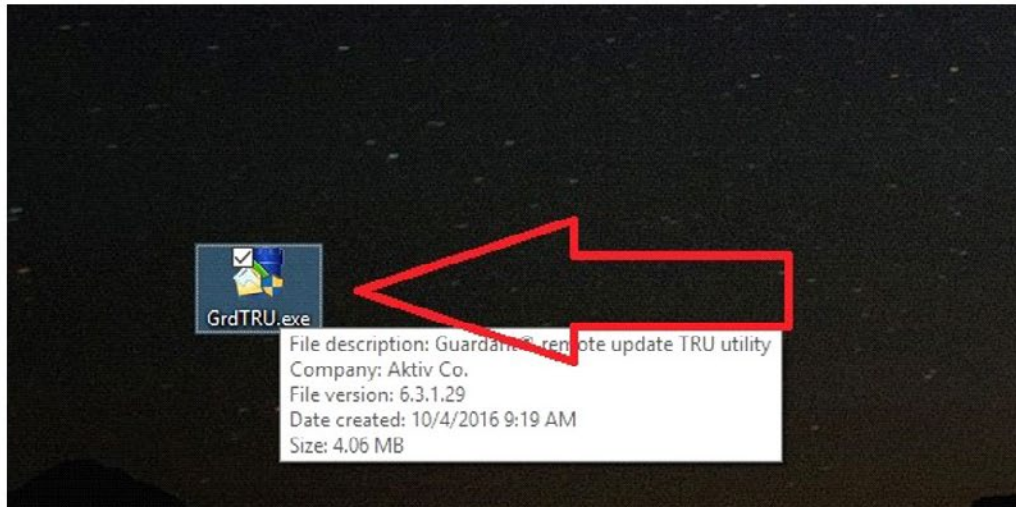
Extract the download and run the SETUP



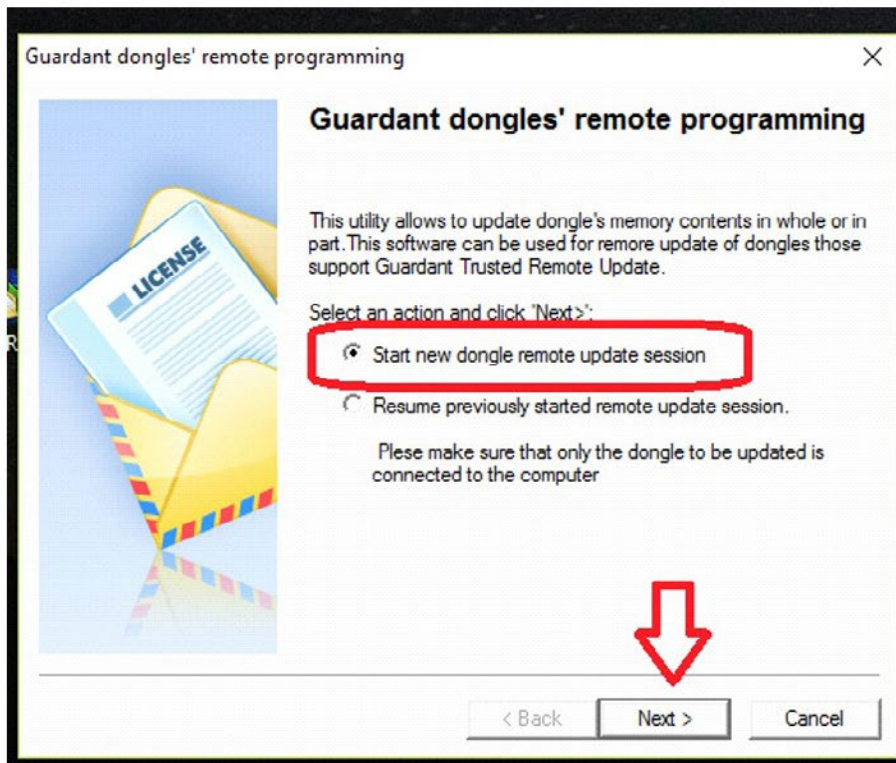
guardant software

Plug the PURPLE USB into your PC and then run this software icon (will be located on desktop once you install)

Run grdTRU.exe

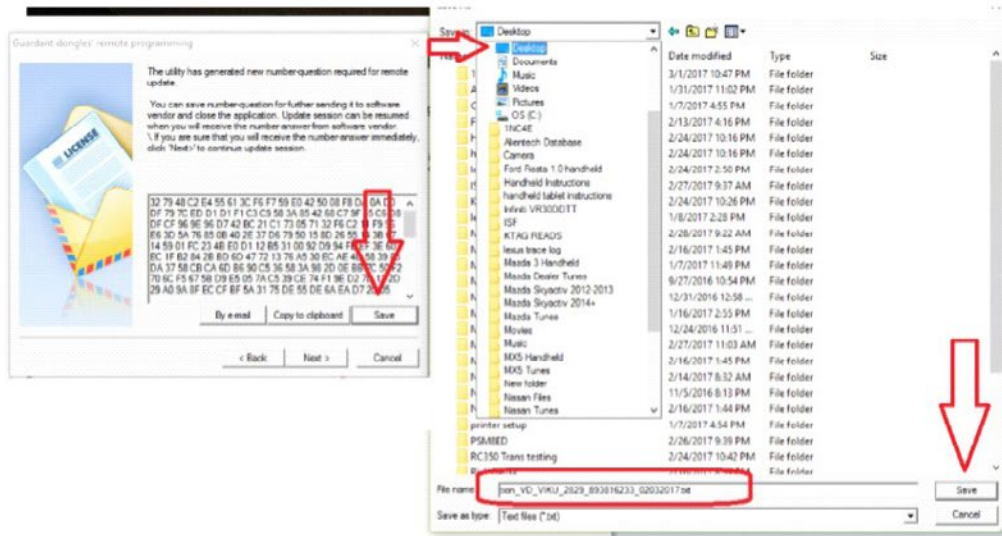


Make sure to "start New" and select NEXT:

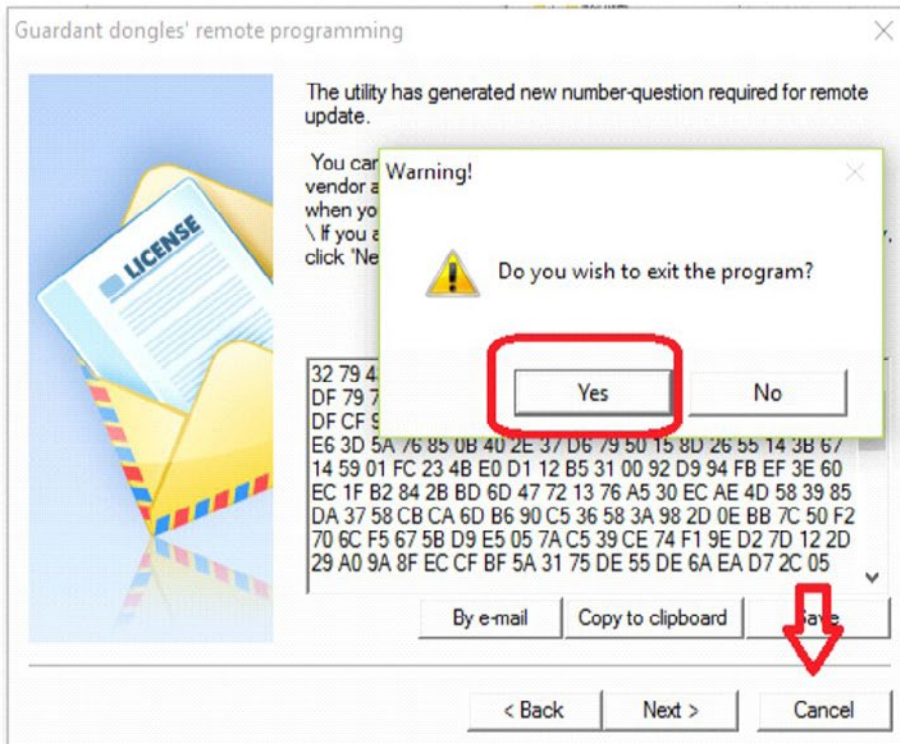


Next click the SAVE BUTTON > select "desktop" to save the file (that is the easiest place to save and find it) then click SAVE to save the dumped information.

Start a new dongle license session. You will be prompted with your initial software licensing key. Press Save to save your unique license code. Please EMAIL this code to us as specified below to Orangevirus101@gmail.com
Exit the software.



Please EMAIL this information to us at Orangevirus101@gmail.com
 you may now exit the software and await our answer file



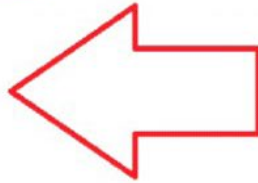
We will supply a license answer key that needs to be inputted into the software to lock your license to your purple USB key. (Note, it is important to keep your key safe, it contains all of your software licensing and is required for reflashing your vehicle).

Download the file from your email that we send you. It will most likely be located in your DOWNLOADS folder.

Run grdTRU.exe software once again and RESUME PREVIOUS SESSION.
Click next so you can select your answer file.

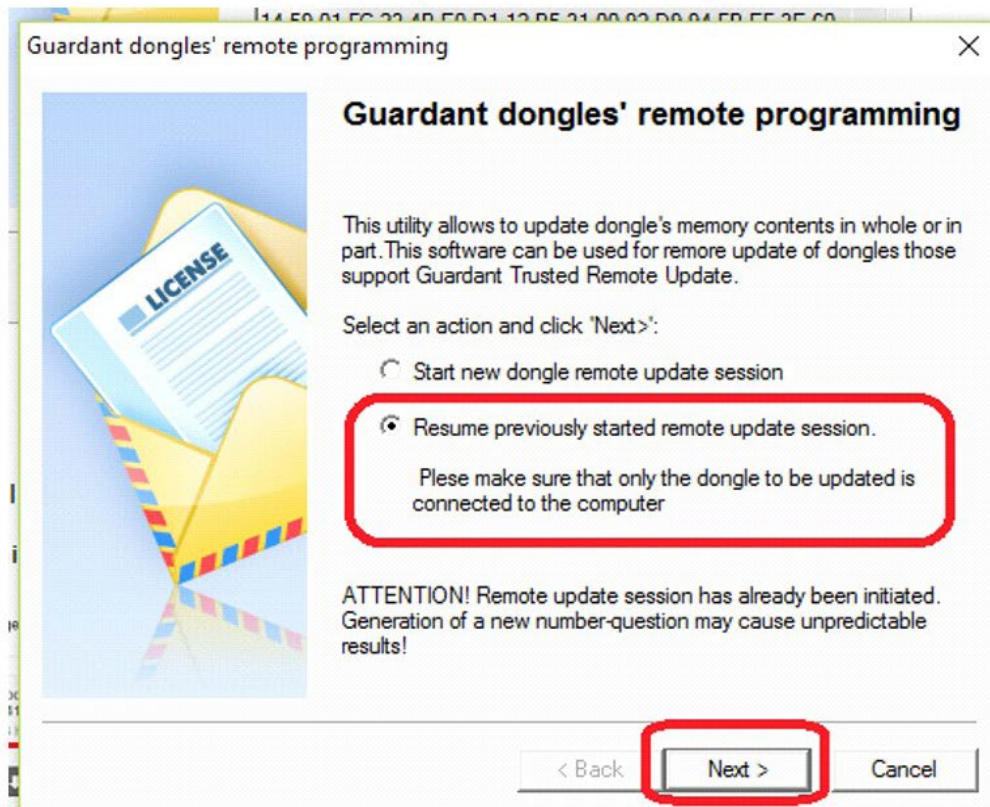
We will supply an "answer" key for example "answer.txt"
save this file. (it will probably save to your DOWNLOADS folder)

[Message clipped] [View entire message](#)



Once you have the answer file downloaded Run the GrdTRU Software again
(plug in the purple USB)

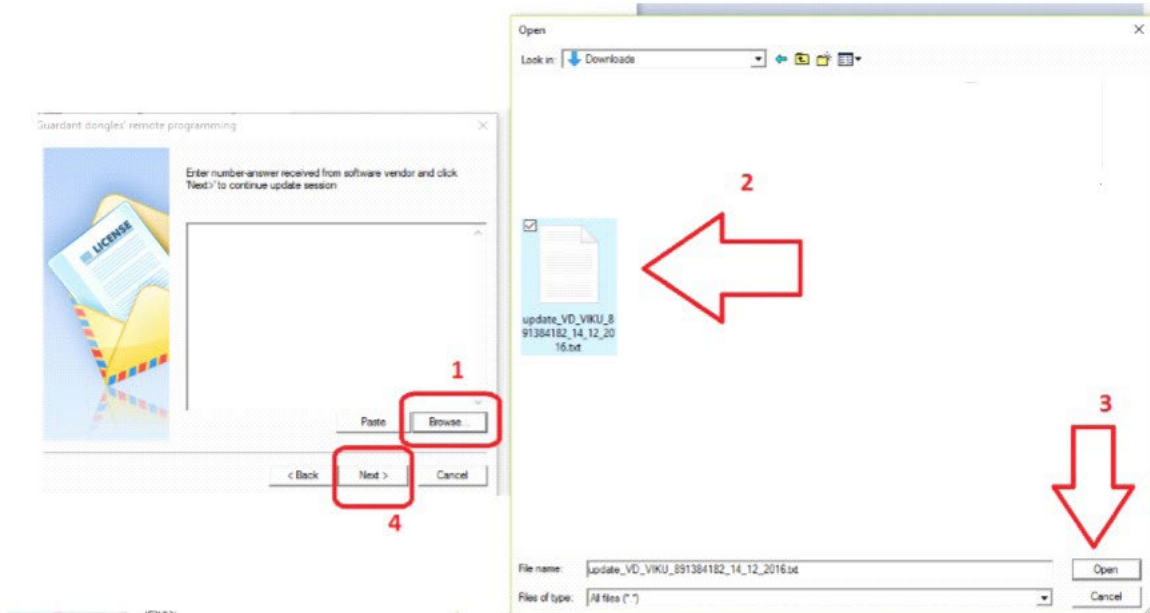
make sure it is selected to RESUME previous session



Next Select Browse, select the UPDATE file, then click open then click NEXT.

Click the "browse" button and select the answer key file we supply to you
then click next.

The software will generate a final license key that will be used for activating
PCMFlash software. Email us this final answer key.



The software will generate a final ANSWER.txt file. Save this file.

Email this file to us at Orangevirus101@gmail.com

We will return the final registration code (EXAMPLE BELOW)

EBFACBA1 A971F417 9958E56D B34B78D6 7AED6B86 B3778301 01F36A9F
066009B3

0C8A1A11 F02C94F8 C791F748 49A55A3F 5D7E24D3 B9847A04 40BDED24
4FOEF2B4

90951D82 246EE74A 05FB01BA 06B9DA2C D7DC2D36 6880F121 38B6726B
31FF278E

90951D82 246EE74A 05FB01BA 06B9DA2C D7DC2D36 6880F121 38B6726B
31FF278E

We will send you your generated Reflashing license to be inputted in PCMFlash copy your reflash activation key and input in pcmflash as shown next page.



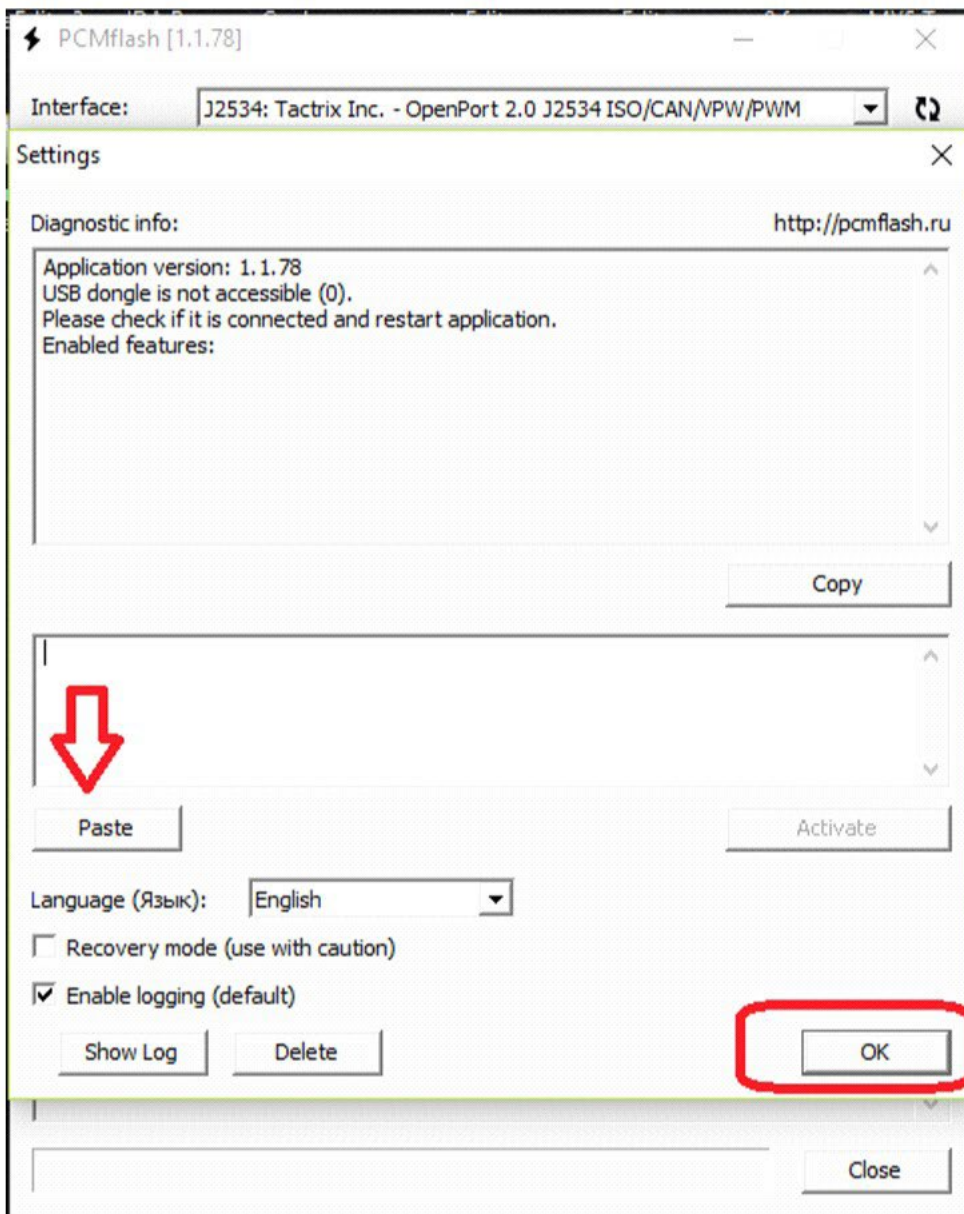
Go to your PCMFlash Software :

Press the PASTE BUTTON

THEN CLICK OKAY

EXIT AND RESTART SOFTWARE (PCMFLASH)

Registration complete



Now all of the hard stuff is complete! The Licensing process is the most difficult / time consuming / tedious bit. Reflashing the ECU is a lot simpler.

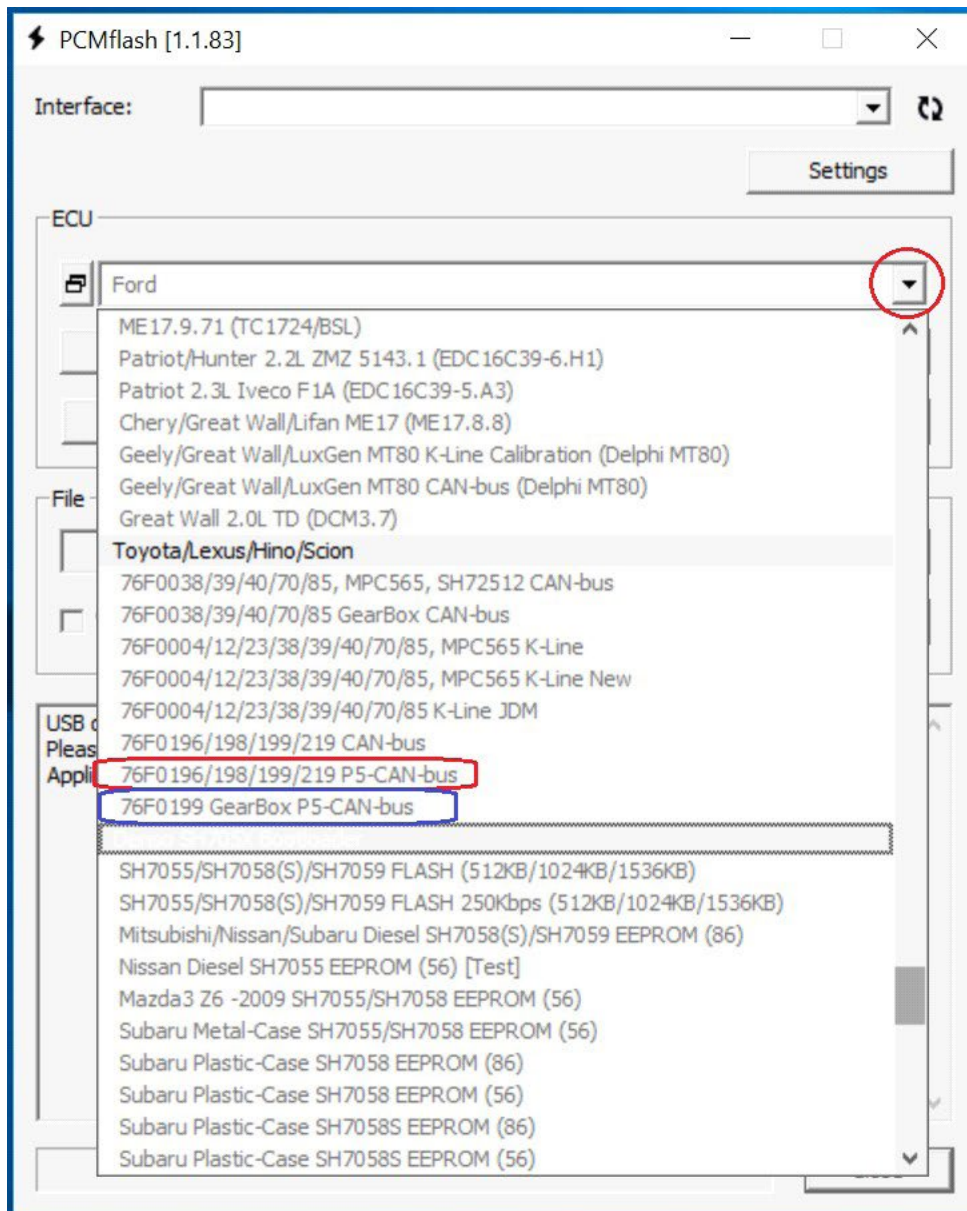
Lets begin by preparing to read your engine
(and transmission if automatic) ECU.

Lets get your software and your vehicle prepared.
When **READING** or **WRITING** a calibration to or from the ECU, always be sure to disable ANY battery drains. Like: Auto head lights, radio, air conditioning / vents, cabin lights, etc. You want as minimal electronics on as necessary.

Take your computer to your vehicle, your open port
and your purple USB key.

Plug the purple USB into the pc, the tactrix into the OBDII port and into your computer. Turn your vehicle to ON but with the engine OFF. NEVER... NEVER attempt to read or write to the ECU with the engine running. Run PCMFLASH software.

Click the button circled in red to select your read / write template. (they will be the only ones bold). Note if you have a AUTOMATIC transmission you may elect to read your auto trans ECU as well.



Click button circled in RED scroll down to toyota / lexus section. Select : 76F0196/.../.../... P5 CAN-bus
To read the engine ECU

After reading the engine ecu, if you have an AUTOMATIC transmission you can select the blue option to read the transmission ecu.

Reading the ECU can take time, up to 20 minutes for the initial readout. (writing to the ecu is much faster). We recommend that you do this process from OUTSIDE your truck. An example would be placing your pc on the driver seat, preparing the software while standing outside. This is to minimize any chance of disconnection.

it is extremely important that while reading and or writing to the ECU that the connection is NEVER disturbed, the car is NEVER shut off until the software prompts you “successful” and tells you to turn it off.

Follow all prompts the software tells you to.

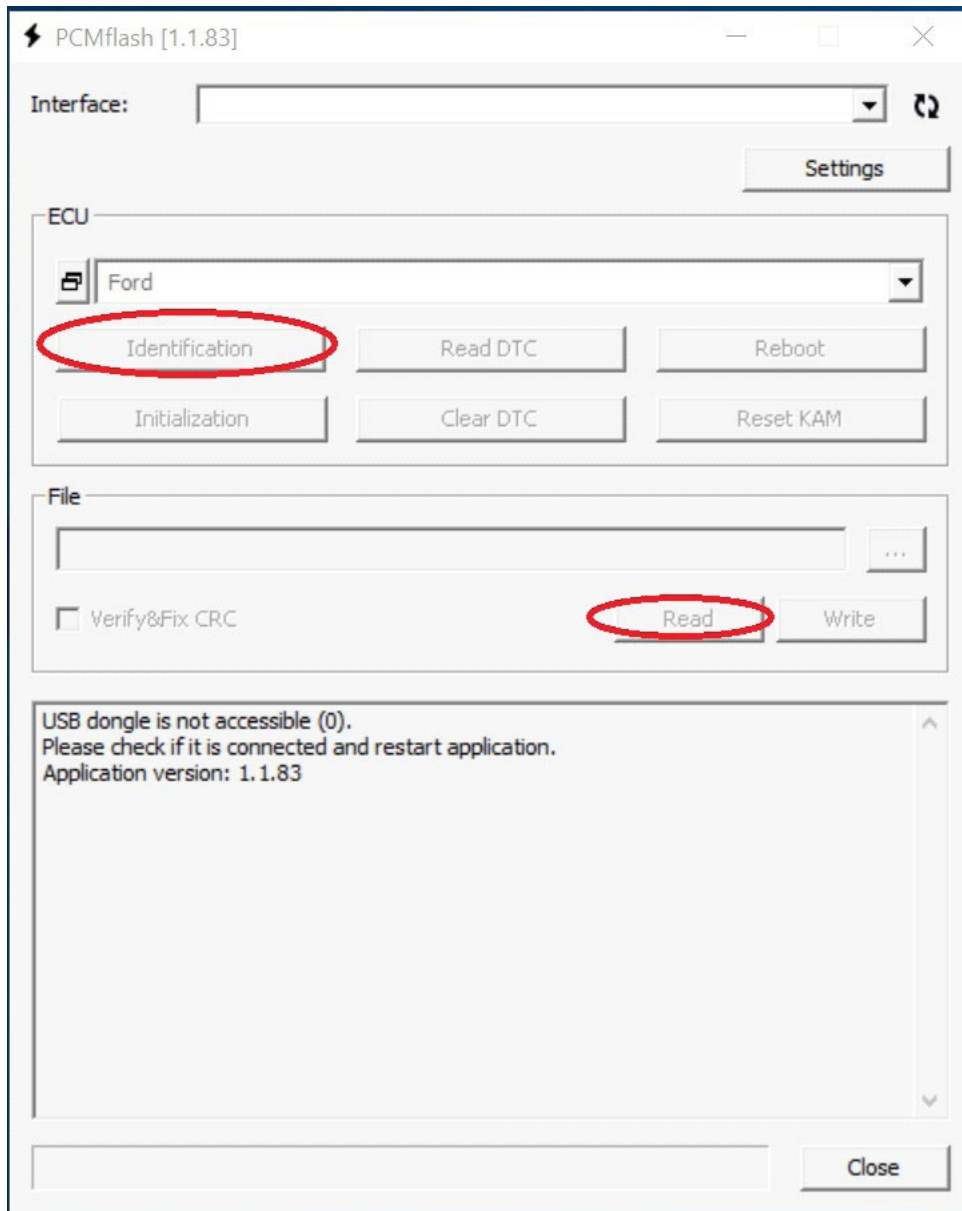
To read, first press the IDENTIFICATION button. The software will generate some basic information about your vehicles calibration IDs. This is an easy way to ensure you are connected to the ECU as well, by pressing the IDENTIFICATION button and checking for the software to return your ECU calibration information.

once it has recognized your ECU, press the READ button and follow the software prompts. The readout can take up to 20 minutes! So please be patient and do not interrupt this process.

once it has completed the software will prompt you that it has completed and you will be able to save the file. Please save the file,

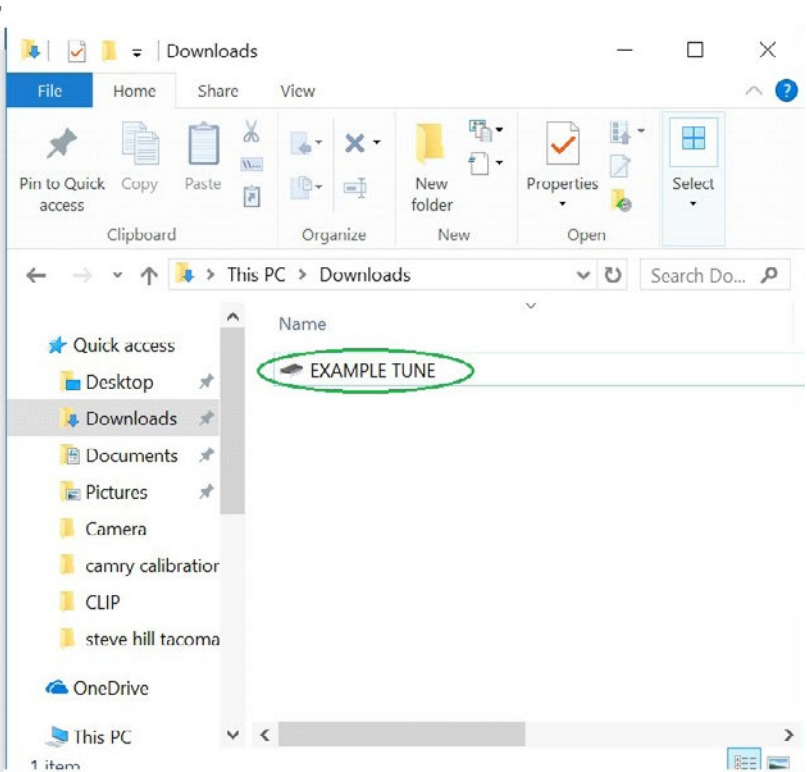
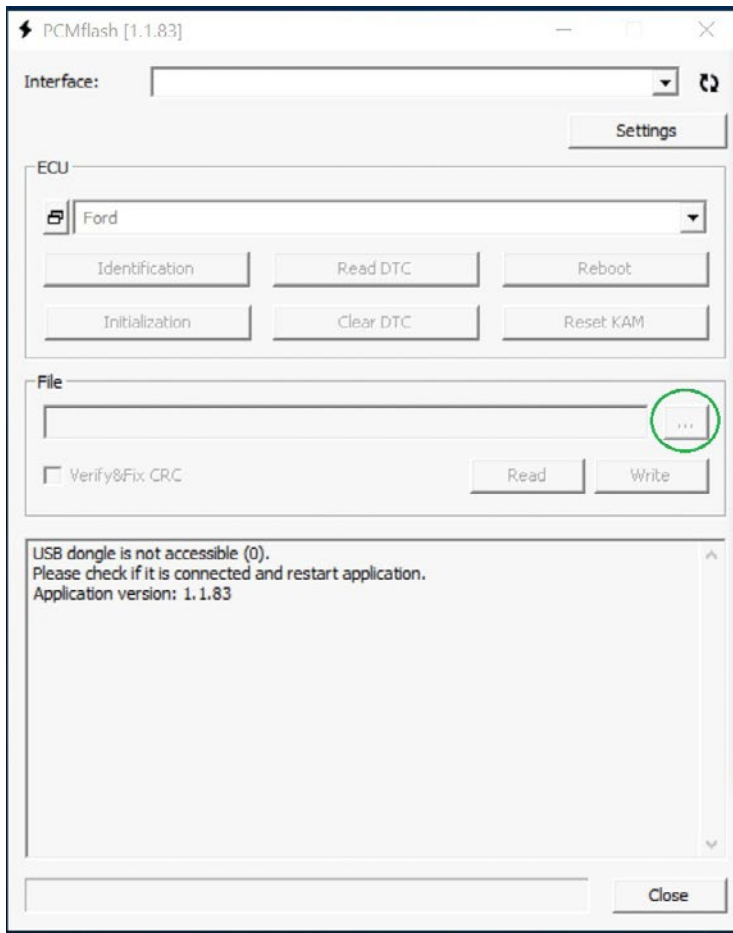
**DO NOT RENAME IT,
and email it to us at : Orangevirus101@gmail.com.**

You may also elect to press the IDENTIFICATION BUTTON and send us a SCREENSHOT of your ECU Calibration information that PCMFLASH generates instead, as we may already have your ECU version in our database, we will let you know if a readout is required.



The Writing process is nearly identical. To ensure you are securely connected to your ECU press the IDENTIFICATION button and allow it to read your ecu calibration information.

Then select your tune file (image below) and prepare to write the ECU. Press the button with “...” three dots to open a window to select your tune file (or stock file) once that is selected make sure that the Verify & Fix CRC is CHECKED. It is checked by default, it MUST...MUST....be checked before flashing. If it is not checked DO NOT WRITE TO THE ECU!



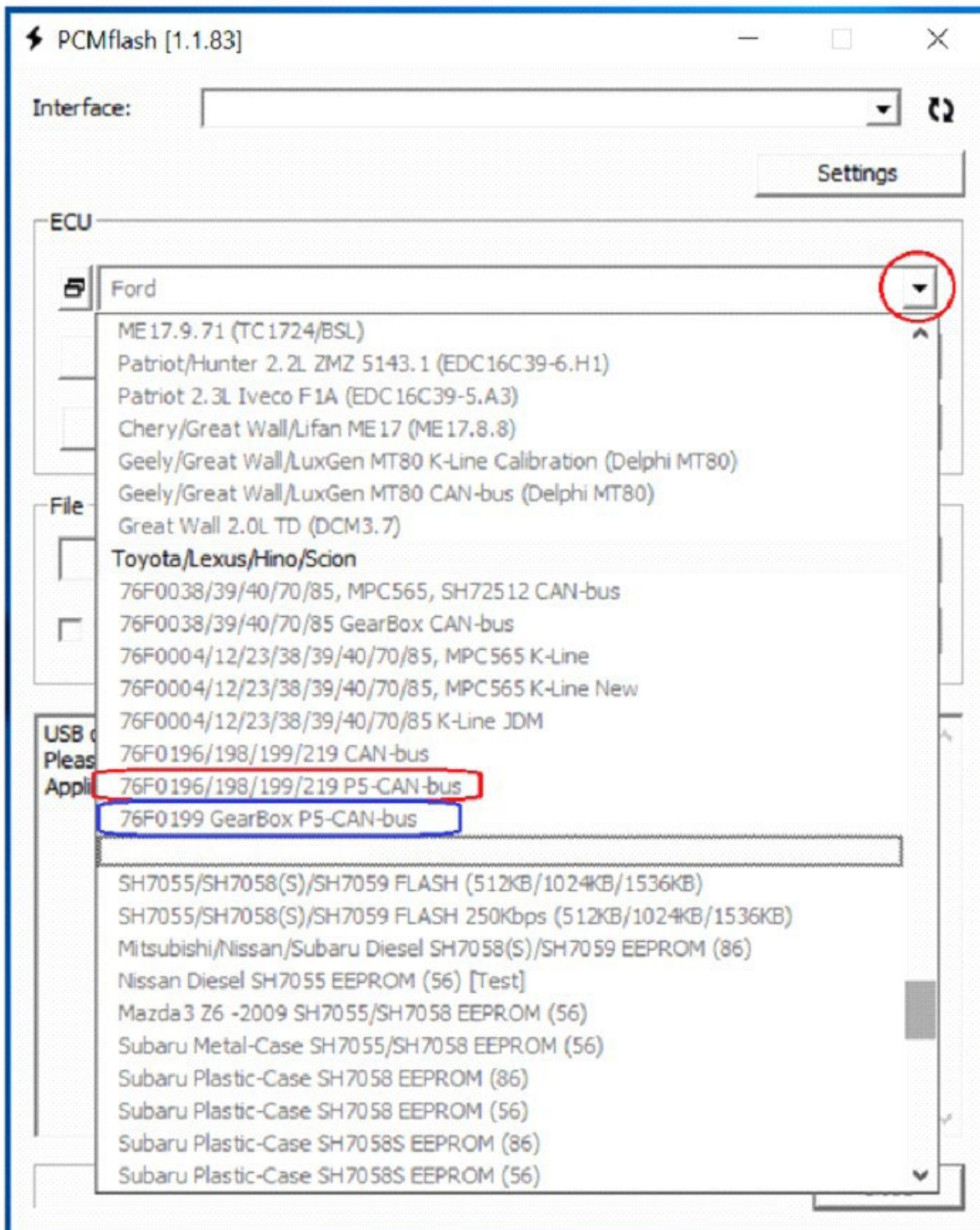
Once the software loads your file, ensure 3 things:

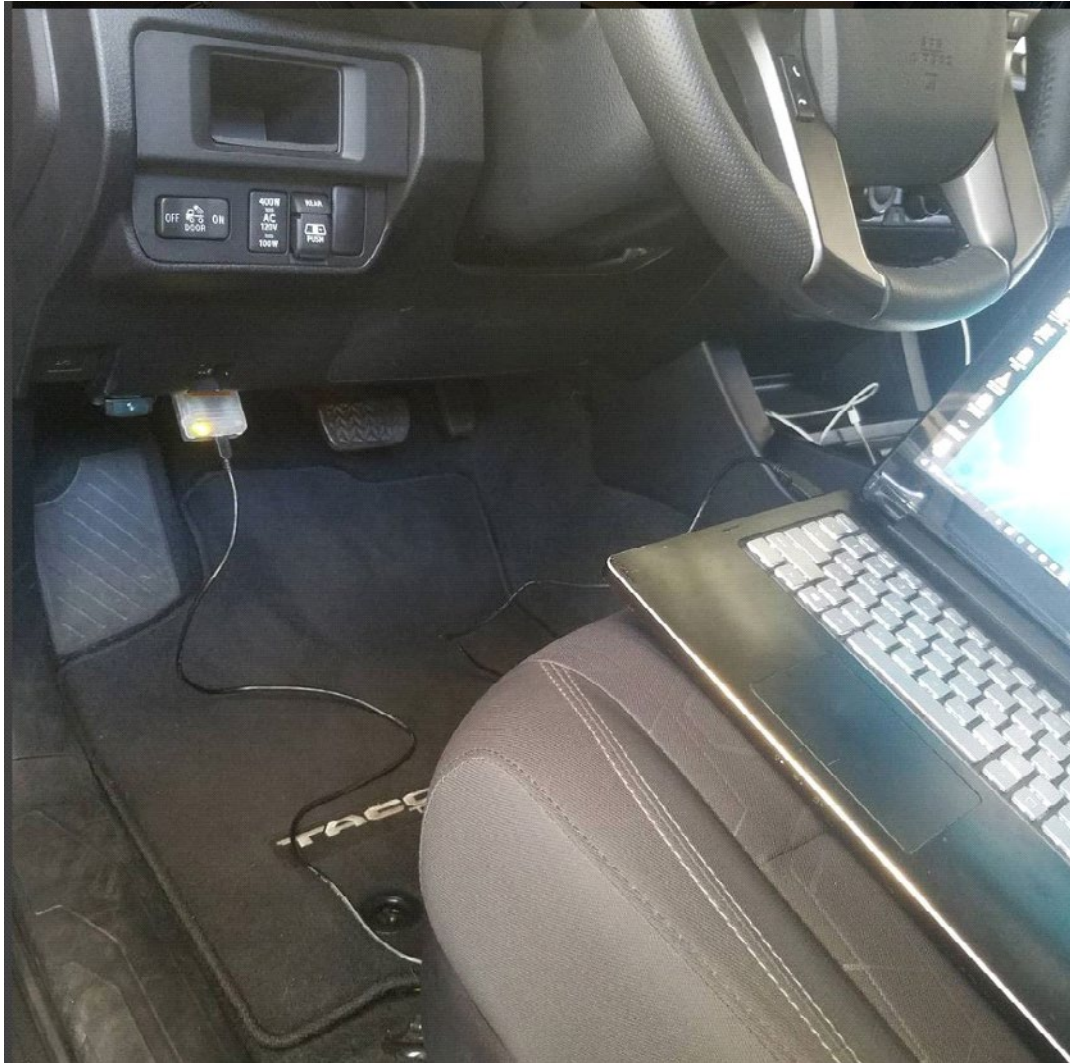
1. All possible battery drains are off. (head lights, radio, ac, etc)
2. you have a secure connection to the OBDII port and to your computers USB. No loose USB cables or wobbly connections! We recommend use the cable provided with the kit.
3. Remove yourself from the vehicle so there is NO chance your leg, arm, body, etc bumps into the cable.

We recommend sitting the laptop on the passenger seat, and pressing the “write” button from outside the vehicle. (like image below)

when preparing to write a file to the ECU MAKE SURE to select the CORRECT TEMPLATE for flashing.

the RED FLASH TEMPLATE IS FOR FLASHING THE ENGINE MAP
select the RED if your tune file is for the engine
THE BLUE TEMPLATE IS FOR FLASHING THE TRANSMISSION MAP
select the blue if your tune file is for the transmission
(transmission maps will be labeled as such from us)





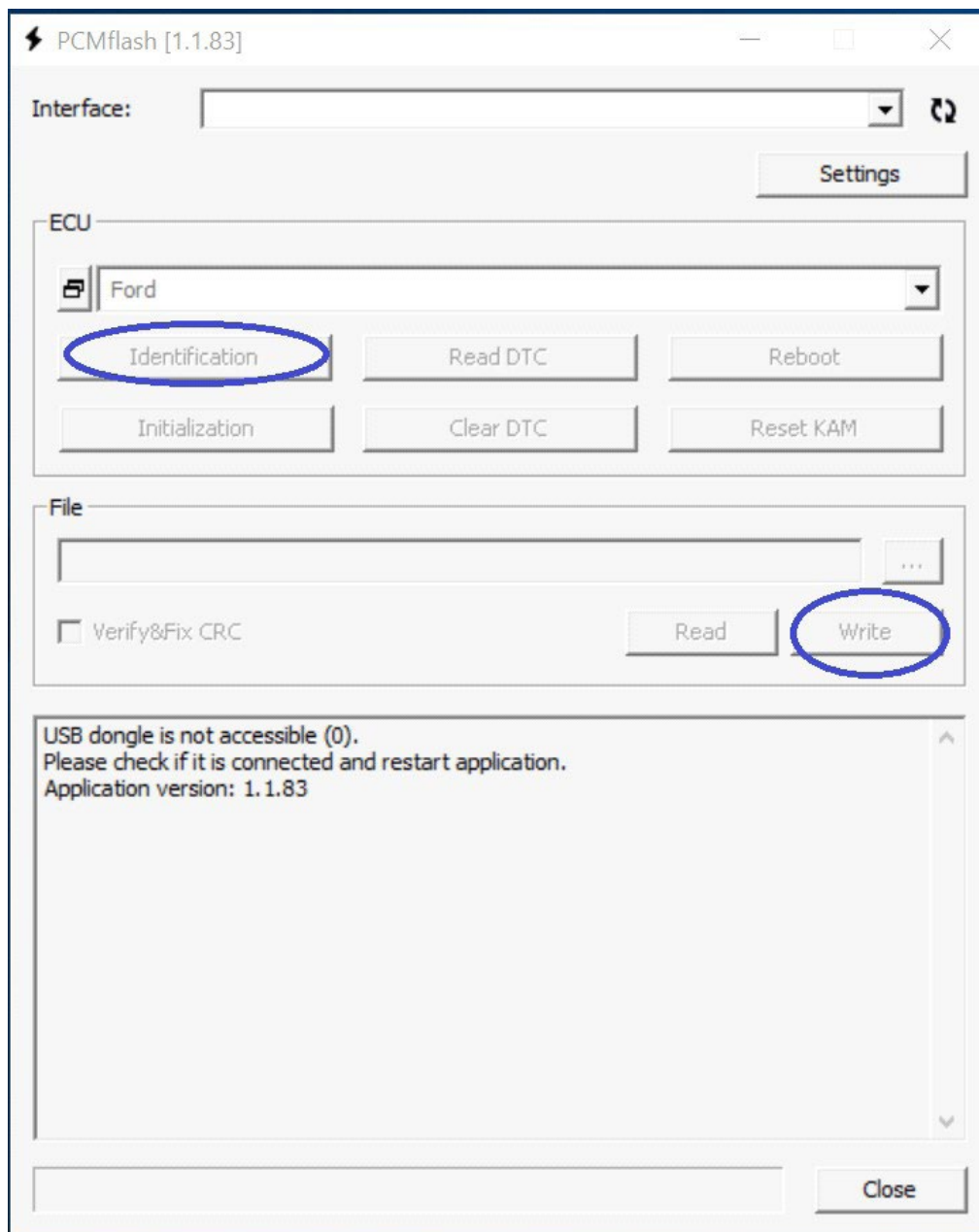
once you are ready, press the WRITE button and follow the prompts. It will prompt you the checksum is correct, continue.

It will prompt you the battery voltage. if your battery voltage is under 11.5 volts, we recommend that you first charge your battery. Ideal voltage is 12.0+

The writing process will begin. This can take up to 5 minutes.

NEVER interrupt this process for ANY reason. If you get ANY errors do NOT shut the vehicle off, rather attempt to reflash once again by pressing the write button again. It is critically important that the write process is done successfully and uninterrupted or damage to the vehicles ECM is possible.

As long as you follow our steps there should be no risk to your vehicles ECM and every write process should finish successfully.



Once the software is done reflashing the ECU it will prompt that it has been completed successfully, and to shut the car off.

Shut the vehicle off, and then start the vehicle to confirm successful flash. Once the engine has started that means the flash is successful!

our next instruction set will cover datalog setup.