



OVTUNE TACOMA INSTRUCTIONS

FLASHING & UPDATES

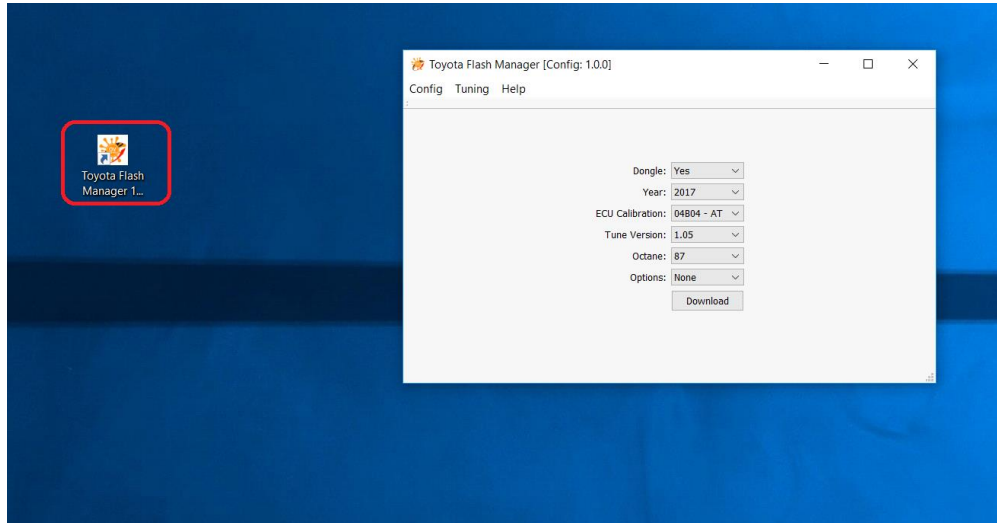
CHECKING YOUR ECU ID, DOWNLOADING AND FLASHING TUNES

**THESE INSTRUCTIONS WILL COVER DOWNLOADING THE
TUNE FILES AND CHECK YOUR ECU ID, FLASH TUNES AND
GETTING UPDATES.**

***NOTE – INTERNET CONNECTION IS REQUIRED TO
DOWNLOAD TUNE FILES.**

STEP 1

TO BEGIN, RUN TOYOTA FLASH MANAGER

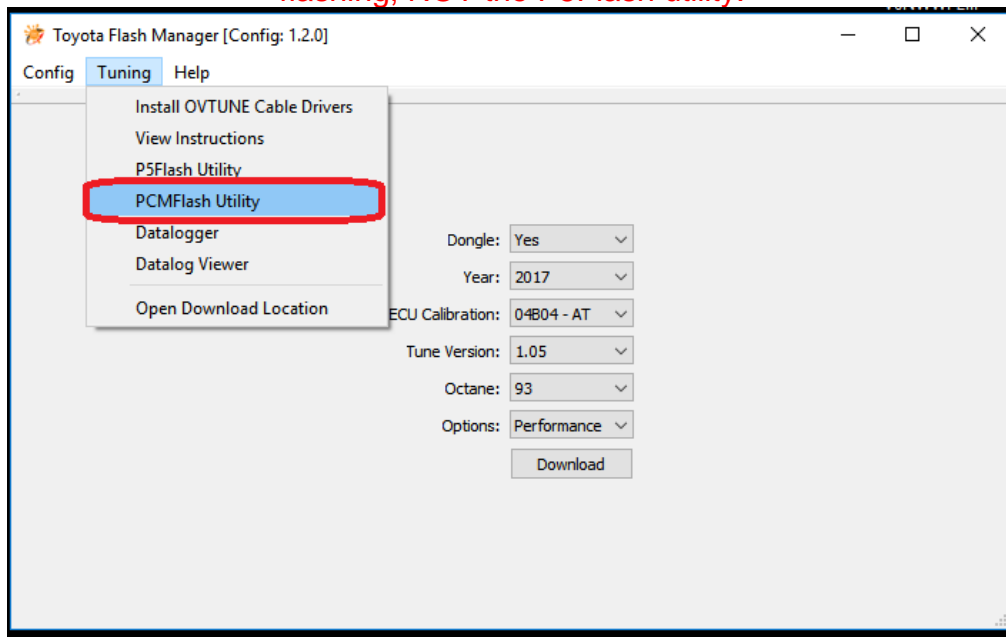


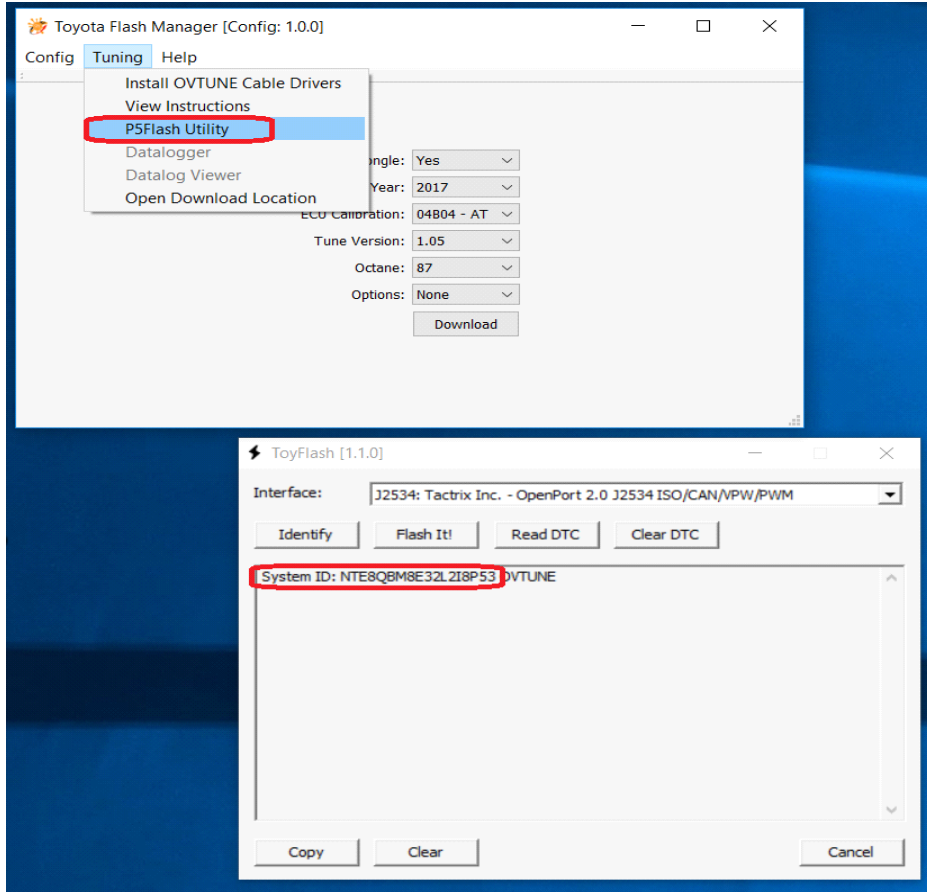
RUN “P5 FLASH UTILITY” (IMAGE IS RE-USED FROM PREVIOUS INSTRUCTIONS)

OR if you have our dongle kit (mini black or purple USB) run PCMFASH Utility

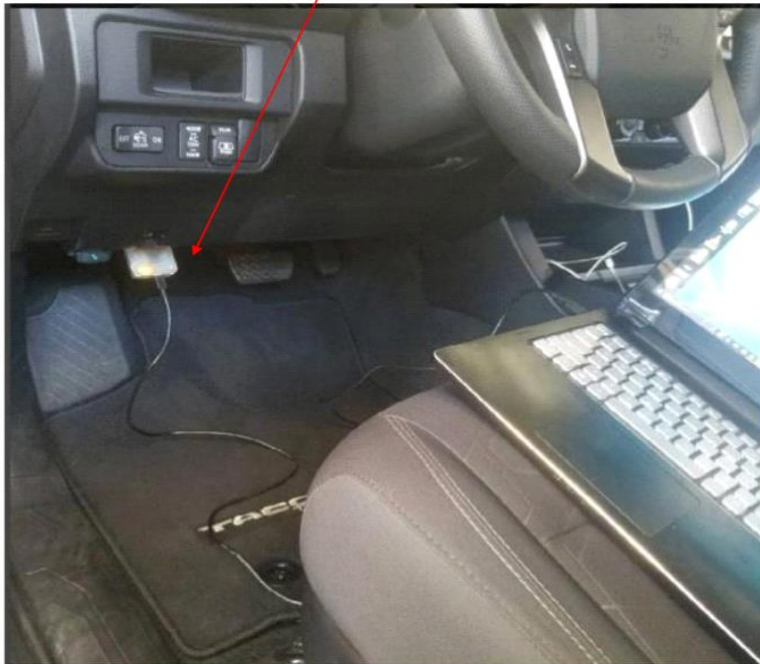
FOR DONGLE USERS - (If your kit came with a mini black USB or Purple USB Flash drive)

Plug your USB drive into your computer and use the PCMFASH utility for flashing, NOT the P5Flash utility.





CONNECT TO YOUR VEHICLE AND TURN YOUR VEHICLE ON (ENGINE OFF)

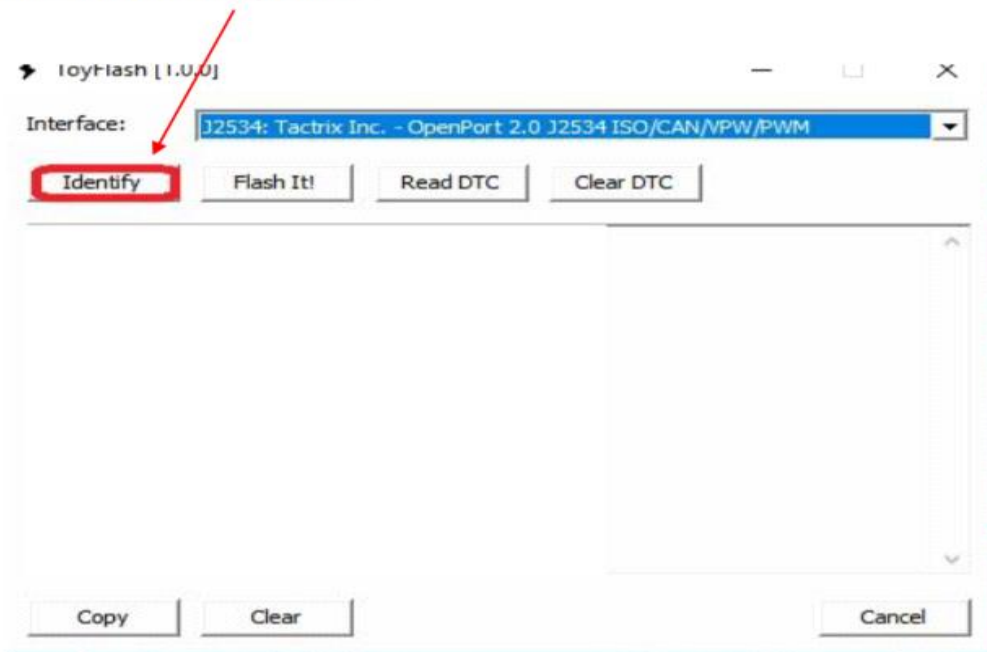


***NOTE: THE VEHICLE MUST BE FULLY ON, NOT ACCESSORY MODE.
IF YOU HAVE A PUSH BUTTON START, PRESS IT TWO TIMES WITHOUT YOUR
FOOT ON THE BRAKE.**

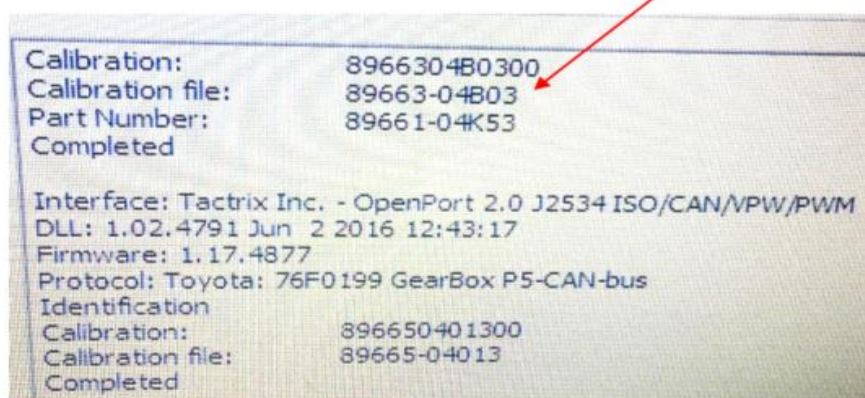
STEP 2

ON TOYFLASH (P5 FLASH UTILITY) CLICK "IDENTIFY"

Then, Click 'Identify button'



Once the software identifies your truck,
check your ECU version (for example, 89663-04B03 / Picture below)



PLEASE REVIEW YOUR TRUCK DETAILS :

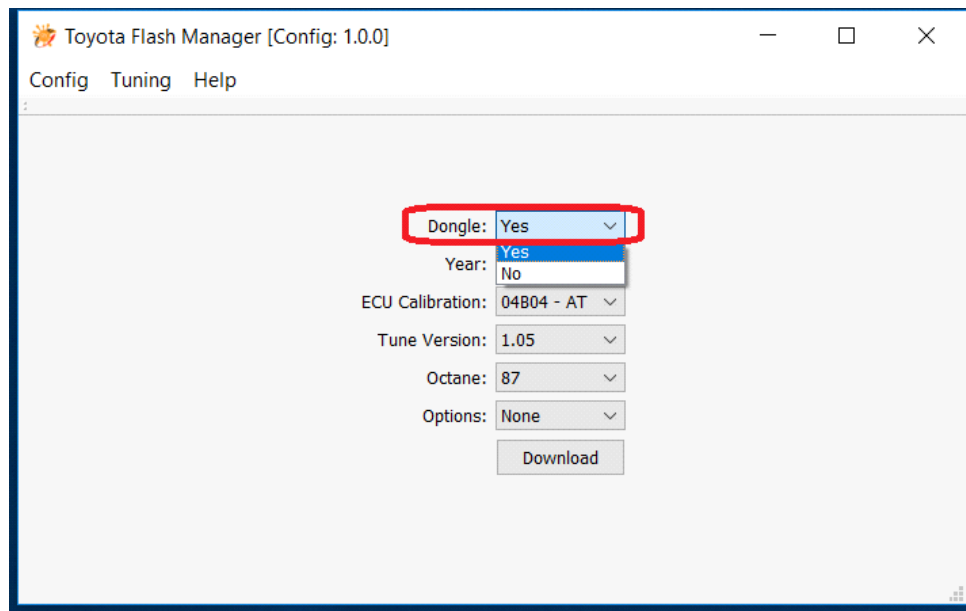
YOU WILL SEE "CALIBRATION FILE (red arrow points to). Notice the last 5 digits of the ID.

In this example, the ID is 04B03 (see red arrow).

Check YOUR Truck ID.

Next, Go to our Flash Manager Software.

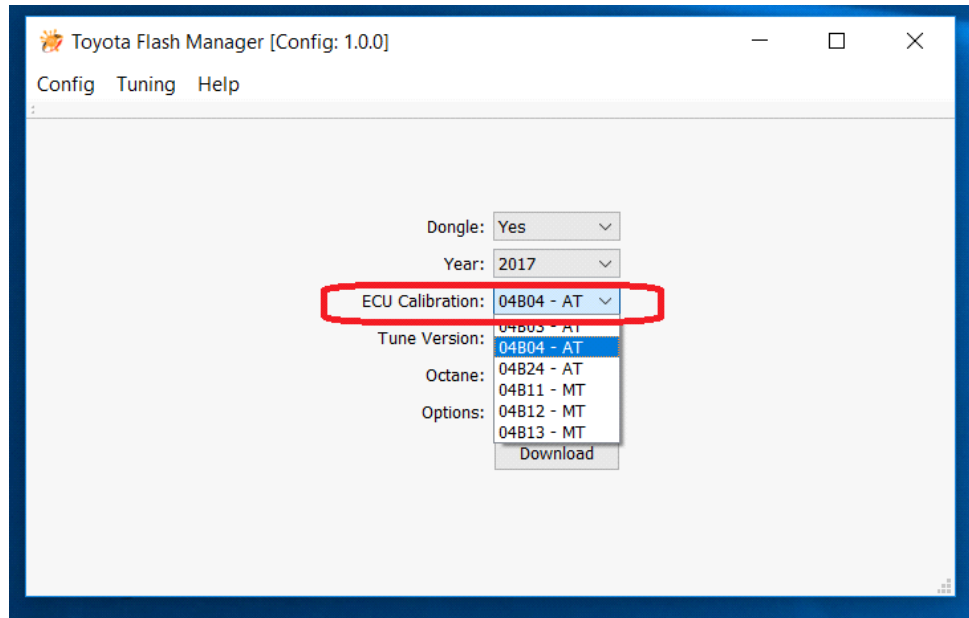
Under "Dongle" Select NO



UNDER YEAR, SELECT THE YEAR OF YOUR TRUCK

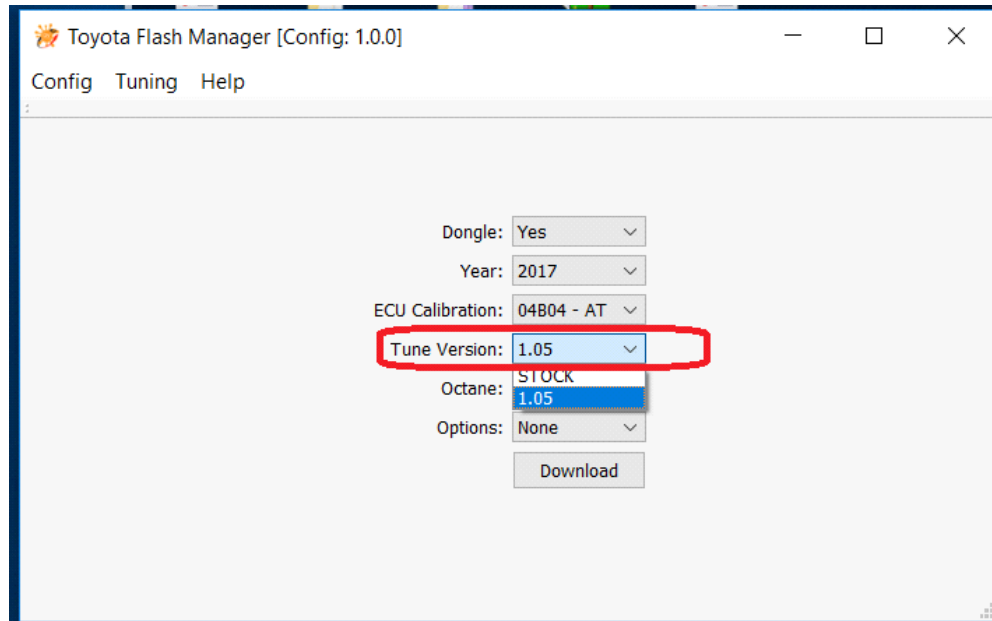
***NOTE:** For 2016 Trucks, some of them may have been updated by the dealer, our flash manager goes by CALIBRATION YEAR. SO, if you DO NOT SEE your ECU CALIBRATION option under that year, please select one year newer. So for example if your truck is 2016 and there is no matching ID, please select "2017")

SELECT ECU CALIBRATION THAT MATCHES WITH YOUR ECU ID



NEXT, SELECT TUNE VERSION TO DOWNLOAD (1.05 IS OUR LATEST RELEASE)

FOR EXAMPLE, "STOCK" IS FOR THE STOCK TUNE IF YOU WOULD LIKE TO FLASH BACK TO STOCK.

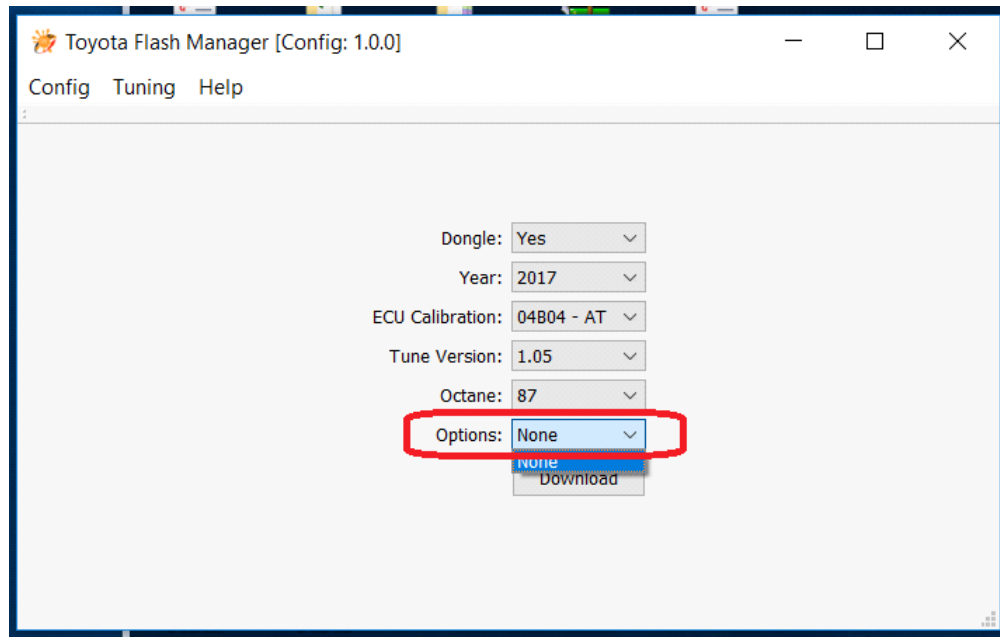


SELECT THE OCTANE OF THE TUNE YOU WOULD LIKE UNDER THE "OCTANE" OPTION

SELECT THE OPTION THAT YOU WOULD LIKE, FROM THE AVAILABLE OPTIONS.

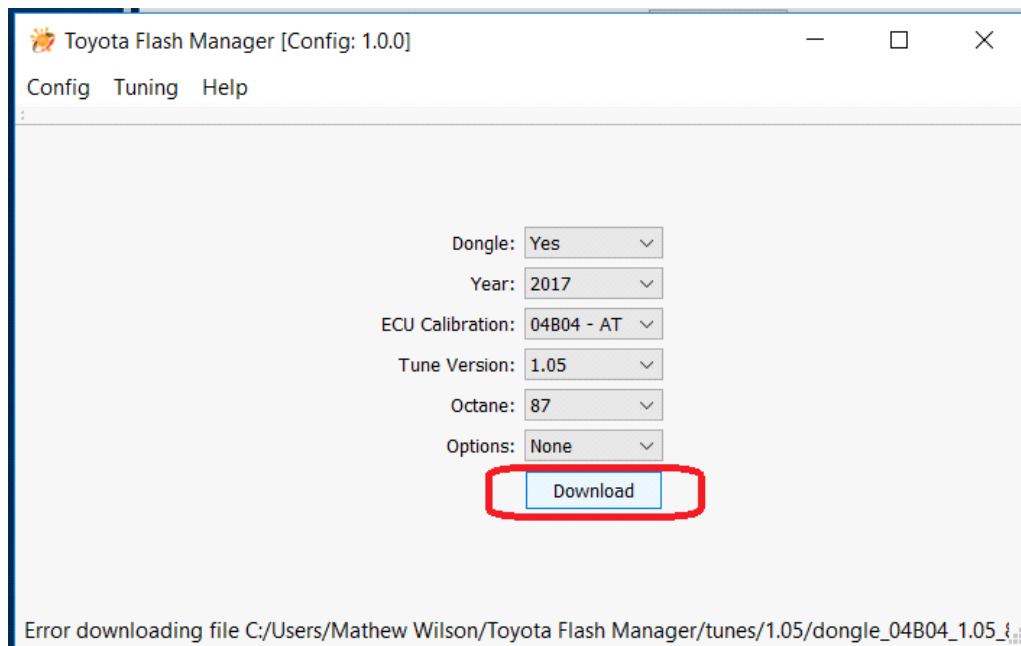
FOR EXAMPLE, OUR "MPG" ORIENTED TUNE, OR OUR "PERFORMANCE" ORIENTED TUNE. OR

FOR EXAMPLE FOR AT TRUCKS, OUR "GEAR LOCK" TUNE.

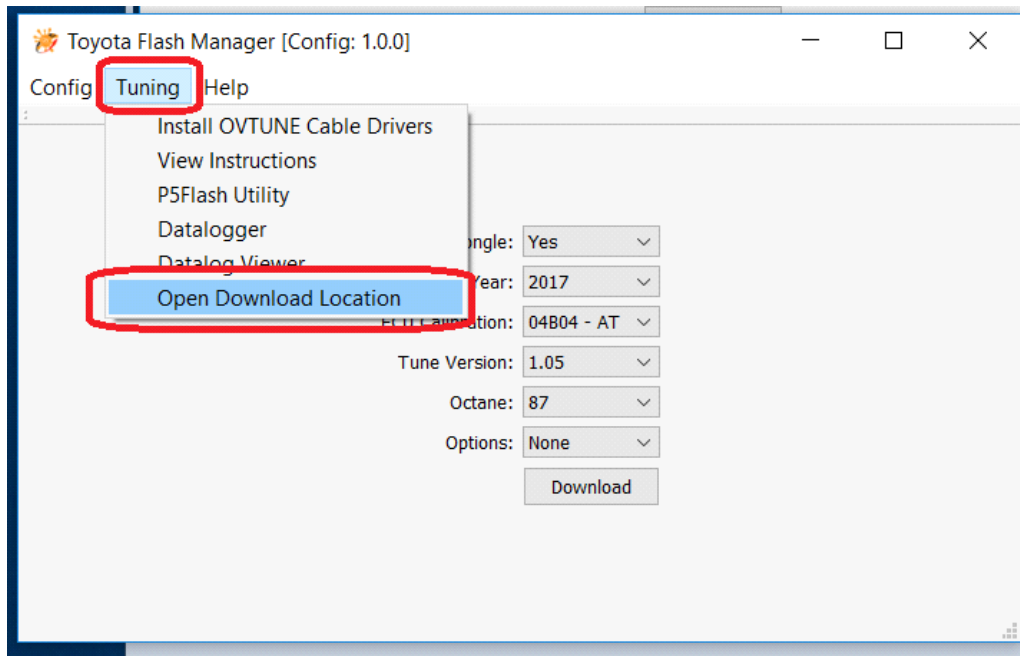


STEP 3

ONCE YOU HAVE SELECTED YOUR OPTIONS, PRESS "DOWNLOAD"



IT MAY TAKE A MOMENT TO DOWNLOAD THE FILE. NOTE, YOU MUST HAVE INTERNET CONNECTION TO DOWNLOAD THE FILES.

TO GET YOUR FILES OPEN THE DOWNLOAD LOCATION:

THIS WILL OPEN A FOLDER WITH YOUR TUNE FILES. YOU WILL SEE THEM LABELED EXACTLY HOW YOUR SELECTION WAS SETUP. (FOR EXAMPLE, **SID_04B03_1.05_87.P5F**)

STEP 4

NEXT, PREPARE TO FLASH YOUR TRUCK.

CLICK "FLASH IT" ON TOYFLASH SOFTWARE

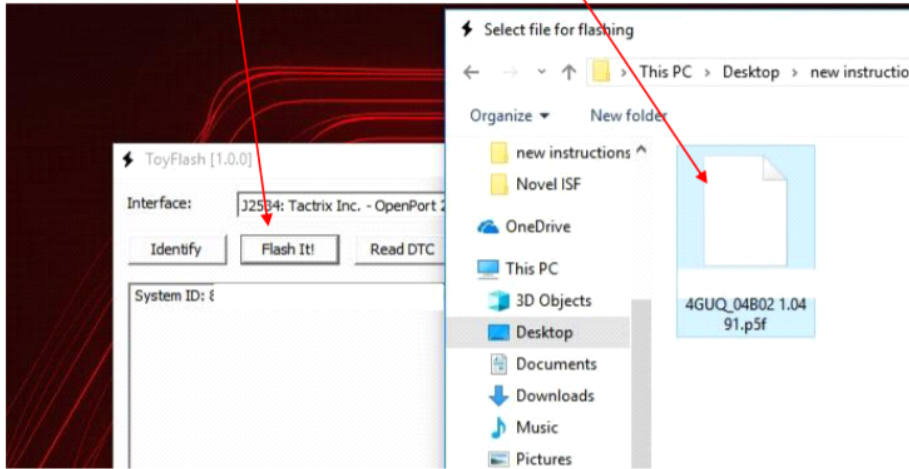
SELECT THE TUNE FILE YOU HAVE DOWNLOADED (IF YOU HAVE DIFFICULTY FINDING IT, MOVE IT TO A DIFFERENT FOLDER OR YOUR DESKTOP FROM THE DOWNLOAD LOCATION FOLDER)

ALLOW THE TRUCK TO FLASH. THIS CAN TAKE UP TO 5 MINUTES.

FLASHING YOUR TRUCK:

Flashing is as simple as reading. Run p5flash(Toyflash), connect to truck, **truck ON engine OFF**

Click the button "flash it!" , Then select your tune file(s)



ONCE THE FLASH HAS COMPLETELY SUCCESSFULLY, THE TRUCK FLASH IS COMPLETE.

PLEASE START THE TRUCK AND ALLOW IT TO IDLE FOR 1-2 MINUTES. THIS WILL INITIATE THE FUEL TRIM LEARNING.

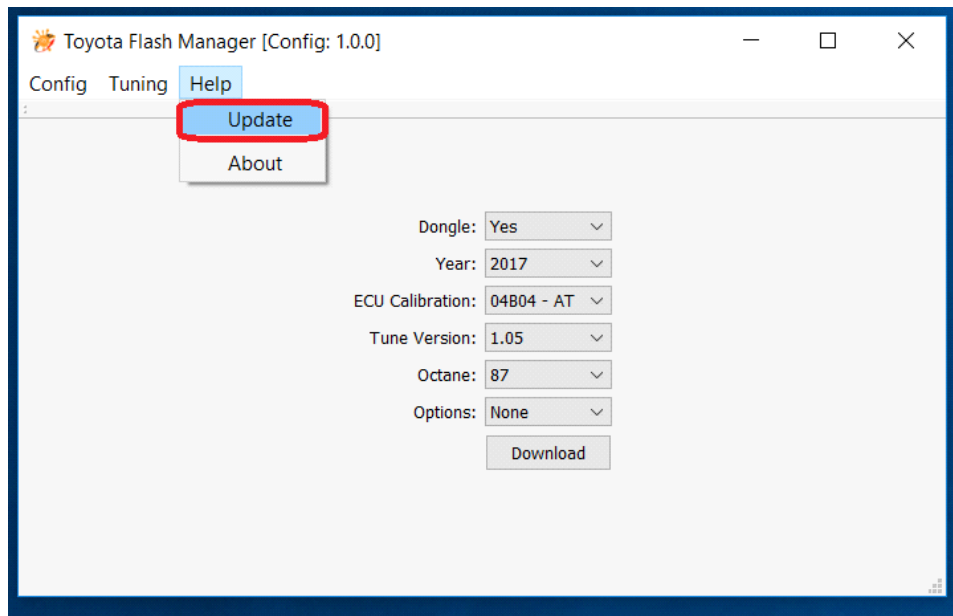
***NOTE: THESE ECUS USE VARIOUS TRIM LEARNING METHODS AND HAVE A COMPLEX CALIBRATION FOR CONTROLLING THE ENGINE AND TRANSMISSION. THE TRUCK MAY DRIVE DIFFERENTLY FOR THE FIRST 15-20 MILES WHILE ALL LEARN TRIMS SETTLE.**

YOU MAY EXPERIENCE SLIGHTLY UNSTABLE IDLE FOR THE FIRST 10-30 MILES, OR UNTIL ALL IDLE LEARNING IS COMPLETE.

FUTURE UPDATES

FOR FUTURE UPDATES (WHEN WE RELEASE A NEW TUNE OPTION)

SIMPLY SELECT " UPDATE " ON FLASH MANAGER, ALLOW IT TO UPDATE, AND THE NEW TUNE FILES WILL BE AVAILABLE.



WHEN WE RELEASE A NEW TUNE, WE POST IT ON OUR WEBSITE AS A BLOG POST.

IF YOU NEED ANY FURTHER ASSISTANCE, PLEASE EMAIL US

EMAIL TO: support@ovtune.zendesk.com

We will try to get back to you as soon as possible. Regular processing time for response/registry file/tune files is 2-4 business days.