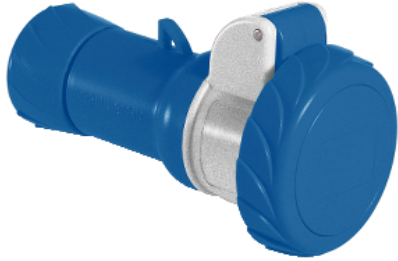


Product data sheet

Specifications



PratiKa wander socket - straight - 32 A - 3P + N + E - 200...250 V AC - IP67

PKF32M725

❗ Discontinued on: 30 June 2022

❗ Discontinued

Main

Range	PratiKa
Product or component type	Wander socket
Device short name	PratiKa screw
Plug, socket category	Low voltage
Poles description	3P + N + E
Network type	AC
Outlet standard	Industrial

Complementary

Plug, socket, control station shape	Straight
[In] rated current	32 A
[Ue] rated operational voltage	200...250 V
Network frequency	50/60 Hz
Ground lug clockwise position	9 h
Plug, socket material	Housing: self-extinguishing engineering polymer
Contacts material	Sleeves: brass
Connections - terminals	Captive screws
Cable cross section	2.5...10 mm ²
Cable outer diameter	11.5...21 mm
Cable entry	Cable gland
Thread type	Pg 21
Net weight	0.356 kg
Height	104 mm
Width	104 mm
Depth	173 mm
Colour	Grey (RAL 7035)
Voltage colour	Blue

Environment

Standards	IEC 60309-2 IEC 60309-1
IP degree of protection	IP67 conforming to IEC 60529
IK degree of protection	IK08 conforming to EN 62262
Fire resistance	850 °C conforming to IEC 60695-2-1
Relative humidity	50 % at 40 °C 70 % at 30 °C 90 % at 20 °C
Ambient air temperature for operation	35 °C (86400 s) -25...40 °C

Packing Units

Unit Type of Package 1	PCE
Number of Units in Package 1	1
Package 1 Weight	687.0 g
Package 1 Height	10.4 cm
Package 1 width	10.4 cm
Package 1 Length	17.3 cm

Offer Sustainability

Sustainable offer status	Green Premium product
REACH Regulation	REACH Declaration
EU RoHS Directive	Pro-active compliance (Product out of EU RoHS legal scope) EU RoHS Declaration
Mercury free	Yes
RoHS exemption information	Yes
China RoHS Regulation	China RoHS declaration Product out of China RoHS scope. Substance declaration for your information
Environmental Disclosure	Product Environmental Profile

Contractual warranty

Warranty	18 months
----------	-----------

Recommended replacement(s)

PKF32M725 is replaced by:

1x



PratiKa wander socket - straight - 32 A - 3P + N + E - 200...250 V AC - IP67
PKY32M725