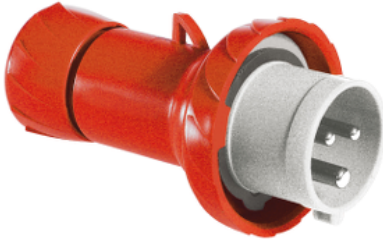


Product data sheet

Specifications



PratiKa wander plug - straight - 16 A - 2P + E - 380...415 V AC - IP67

PKE16M733

⚠ Discontinued on: 30 June 2022

⚠ To be discontinued

Main

Range	PratiKa
Product or component type	Wander plug
Device short name	PratiKa plug
Plug, socket category	Low voltage
Poles description	2P + E
Network type	AC
Outlet standard	Industrial

Complementary

Plug, socket, control station shape	Straight
[In] rated current	16 A
[Ue] rated operational voltage	380...415 V
Network frequency	50/60 Hz
Ground lug clockwise position	9 h
Plug, socket material	Housing: self-extinguishing engineering polymer
Contacts material	Sleeves: brass
Connections - terminals	Captive screws
Cable cross section	1...4 mm ²
Cable outer diameter	8...15 mm
Cable entry	Cable gland Fair lead
Thread type	Pg 16
Net weight	0.144 kg
Height	129 mm
Width	73 mm
Depth	73 mm
Colour	Grey (RAL 7035)
Voltage colour	Red

Environment

Standards	IEC 60309-1 IEC 60309-2
IP degree of protection	IP67 conforming to IEC 60529
IK degree of protection	IK08 conforming to EN 62262
Fire resistance	850 °C conforming to IEC 60695-2-11
Relative humidity	50 % at 40 °C 70 % at 30 °C 90 % at 20 °C
Operating altitude	2000 m
Ambient air temperature for operation	35 °C (86400 s) -25...40 °C

Packing Units

Unit Type of Package 1	PCE
Number of Units in Package 1	1
Package 1 Weight	140.0 g
Package 1 Height	12 cm
Package 1 width	26.3 cm
Package 1 Length	27 cm

Offer Sustainability

Sustainable offer status	Green Premium product
REACH Regulation	REACH Declaration
EU RoHS Directive	Pro-active compliance (Product out of EU RoHS legal scope) EU RoHS Declaration
Mercury free	Yes
RoHS exemption information	Yes
China RoHS Regulation	China RoHS declaration Product out of China RoHS scope. Substance declaration for your information
Environmental Disclosure	Product Environmental Profile

Contractual warranty

Warranty	18 months
----------	-----------

Recommended replacement(s)

PKE16M733 is replaced by:

1x



PratiKa wander plug - straight - 16 A - 2P + E - 380...415 V AC - IP67
PKX16M733