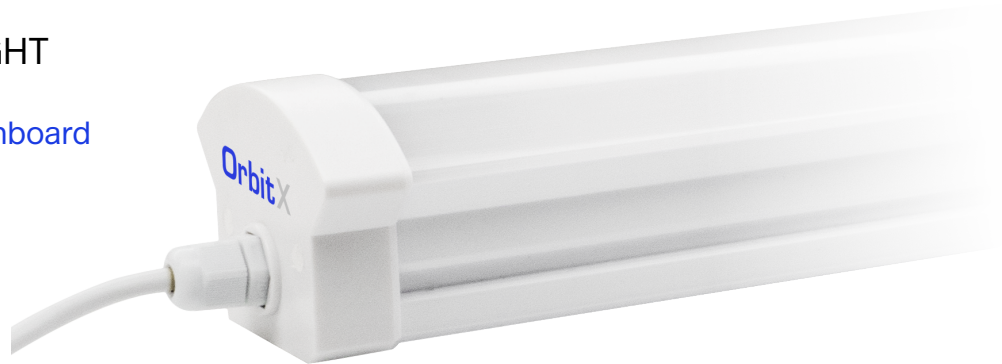


## TITAN

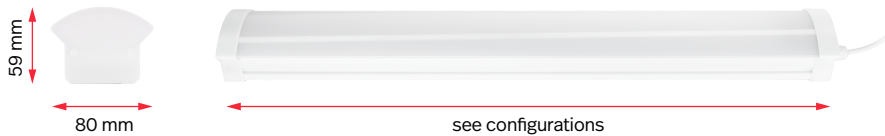
### INTEGRATED LINEAR LED LIGHT

#### OrbitX Direct Drive Technology Onboard

dust proof, moisture proof,  
vapour proof

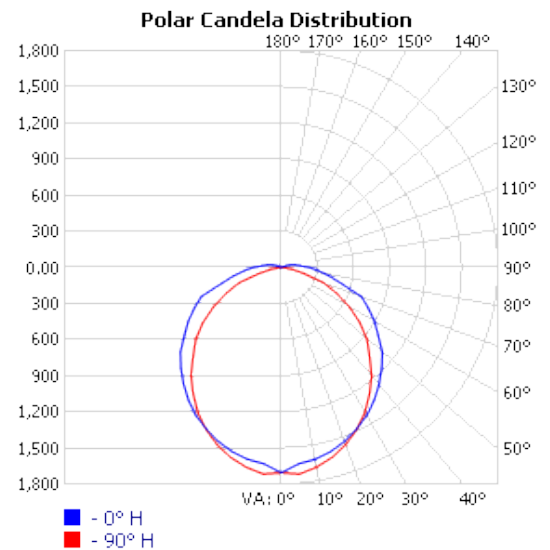


#### Dimensions



#### Configurations

600 mm	1200 mm	1500 mm
9 W 900 lm	18 W 1800 lm	19 W 2000 lm
18 W 1800 lm	36 W 3600 lm	39 W 4000 lm
27 W 2700 lm	54 W 5400 lm	58 W 6000 lm



## Guarantee

Operational Guarantee (365d x 24h)	6 years
Light Output Guarantee (365d x 24h)	3 years

## Lifetime

Nominal Lifetime (L70) IES LM-80, TM-21	60 000 hours
--	--------------

## Photometric Data

Luminous Efficacy	100 lm/W
Correlated Colour Temperature (CCT)	5000K (options available)
Colour Rendering Index (CRI)	83
Gamut Area Index (GAI)	96
Light Quality	Type A compliant (Lighting Research Centre, New York)
Beam Angle	160°
Stroboscopic Effect (100Hz)	80% flicker free (complies to OHS and MHS Act regulations)

## Electrical Data

Power	See Configurations on previous page
Power Factor	>0.98
Operating Voltage	220-240V AC
Minimum Sustained Voltage	No minimum limit, operational from 150V
Maximum Sustained Voltage	250V for 2 minutes
On/Off Switching	Unlimited
Delay to Full Brightness	Immediate

## Temperature

T Ambient (max)	+30° C
T Ambient (min)	-40° C

## Safety

Risk of Breakage	Low, polycarbonate housing extruded to 1mm (no glass)
Electrical	IEC60598-1, IEC60598-2-5 compliant
Surge Protection	1.5kV
Fire Rating	UL-94 VO compliant (no flaming droplets)

## Interference Compliance

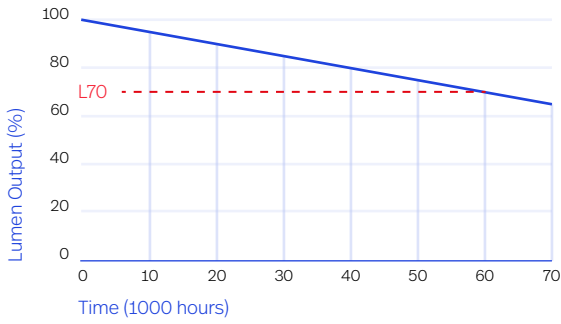
Wifi, Barcode Scanner, Radio Frequency Interference Total Harmonic Distortion	No interference, IEC 61547, SANS 215 (CISPR15) compliant IEC 61000-3-2 Class D Compliant
--	---

## Additional

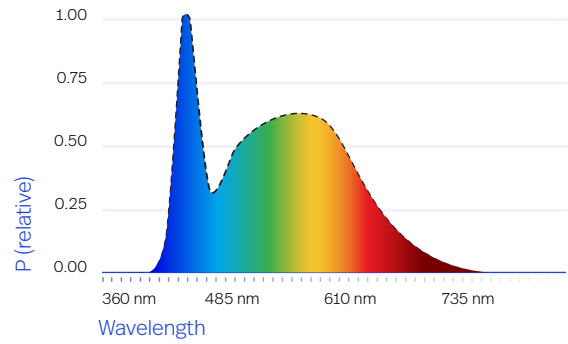
Battery Backup	Available on all models
Variable Switching	Available on all models

Specification tolerance +-10%

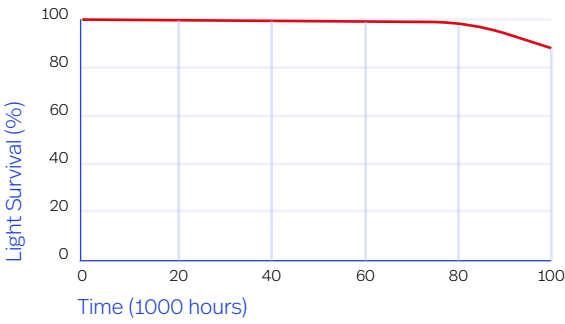
### Rate of Reduction in Light Output



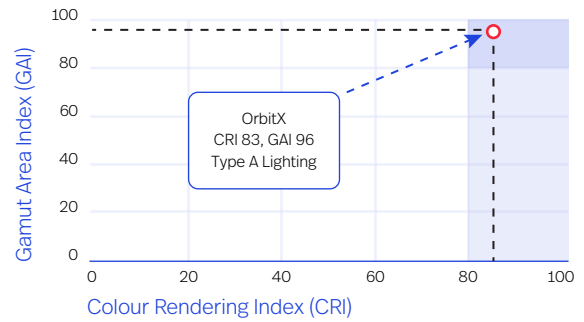
### Light source SPD



### Light Survival Rate



### Type A Lighting\*



\*Type A Lighting as defined by the Lighting Research Centre, New York

Model Code	Length of Light mm	Power Rating	Units per Box	Box Dimensions (l x w x h) mm	Weight (kg)	IES Files
OXTT0600095	600	9 W	8	1280 x 185 x 185	5.36	<a href="#">Click to download</a>
OXTT0600185	600	18 W	8	1280 x 185 x 185	5.51	<a href="#">Click to download</a>
OXTT0600275	600	27 W	8	1280 x 185 x 185	5.66	<a href="#">Click to download</a>
OXTT1200185	1200	18 W	4	1280 x 185 x 185	4.72	<a href="#">Click to download</a>
OXTT1200365	1200	36 W	4	1280 x 185 x 185	4.86	<a href="#">Click to download</a>
OXTT1200545	1200	54 W	4	1280 x 185 x 185	5.01	<a href="#">Click to download</a>
OXTT1500195	1500	19 W	4	1850 x 185 x 185	6.13	<a href="#">Click to download</a>
OXTT1500395	1500	39 W	4	1850 x 185 x 185	6.32	<a href="#">Click to download</a>
OXTT1500585	1500	58 W	4	1850 x 185 x 185	6.52	<a href="#">Click to download</a>