

EN-BA1243

Project.....

Fixture Type.....

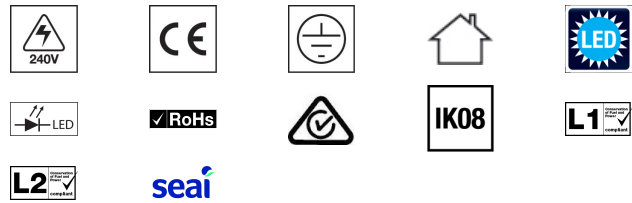
Product Description:

Introducing the newest addition to Enlite's range of LED battens, BatPac™ PRO. This product provides over 40% energy savings compared to traditional fluorescent, however provides the direct replacements for single or twin fittings in size and output. Can also be surface mounted or suspended.

Product Feature:

- Opal polycarbonate diffuser
- Delivering 118lm/W
- Knockouts for cable entry on both ends
- IK08 rated impact resistance
- Push-fit terminals and clip-in gear tray for fast installation
- Multiple BESA mounting points (matches traditional fluorescent)
- Adjustable light detector from 2-50 lux for microwave option
- Adjustable hold time 5 seconds to 30 minutes for microwave option
- 5 year warranty

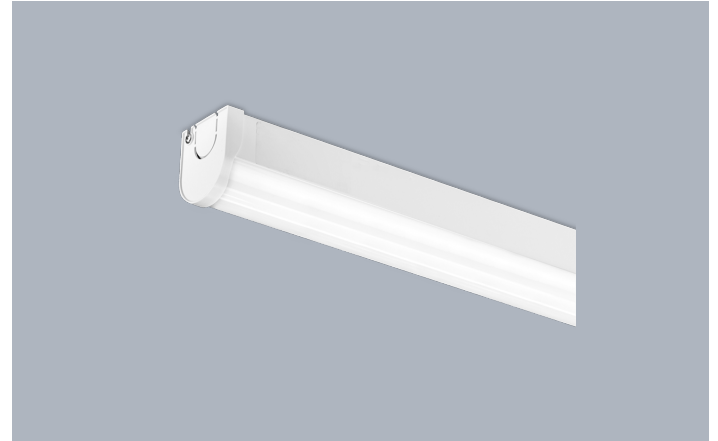
Compliance & Approvals:



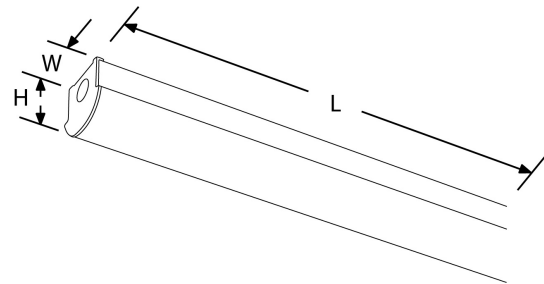
Comments.....

Prepared By.....

Product Image:



Product Dimension:



Product Specs:

Input Voltage	220~240V AC
Input Frequency	50/60HZ
Power Factor	0.9
Operating Temp (Min-Max)	-20-45°C (-4~113°F)
Dimmable	No
Dimensions	1170mm (L) x 61mm (W) x 71mm (H) x mm (OD) x mm (RD) x mm
Number of LEDs	144

SKU Code	Colour	lm	Wattage	Lumens/Watt	Product Type
EN-BA1243/40	4000	5200	43	120.93	Non Dimmable
EN-BA1243EM/40	4000	5200	43	120.93	Emergency
EN-BA1243EMMS/40	4000	5200	43	120.93	Emergency Microwave
EN-BA1243MS/40	4000	5200	43	120.93	Microwave

Warranty

This product has a warranty period of 5 Years from the date of purchase. The warranty is invalid in the case of improper use, installation, tampering, and removal of the Q.C. date label; installation in an improper working environment or installation not according to the current edition of the National Electric Code. Should this product fail during the warranty period it will be replaced free of charge, subject to the correct installation of the original product and subsequent return of the faulty unit. Aurora does not accept responsibility for any installation costs associated with the replacement of this product and Aurora reserves the right to alter specifications without prior notice.

ZA Sales & Distribution
Building 6 Pinewood
Office Park 33 Riley
Road, Woodmead Gauteng
South Africa
Tel : +27 (0) 11 234 4878