



TALLEY MANUFACTURING
 9183 OLD NO. 6 HWY PO BOX 369
 SANTEE, SC 29142 803-854-5700
TALLEYRINGS.COM

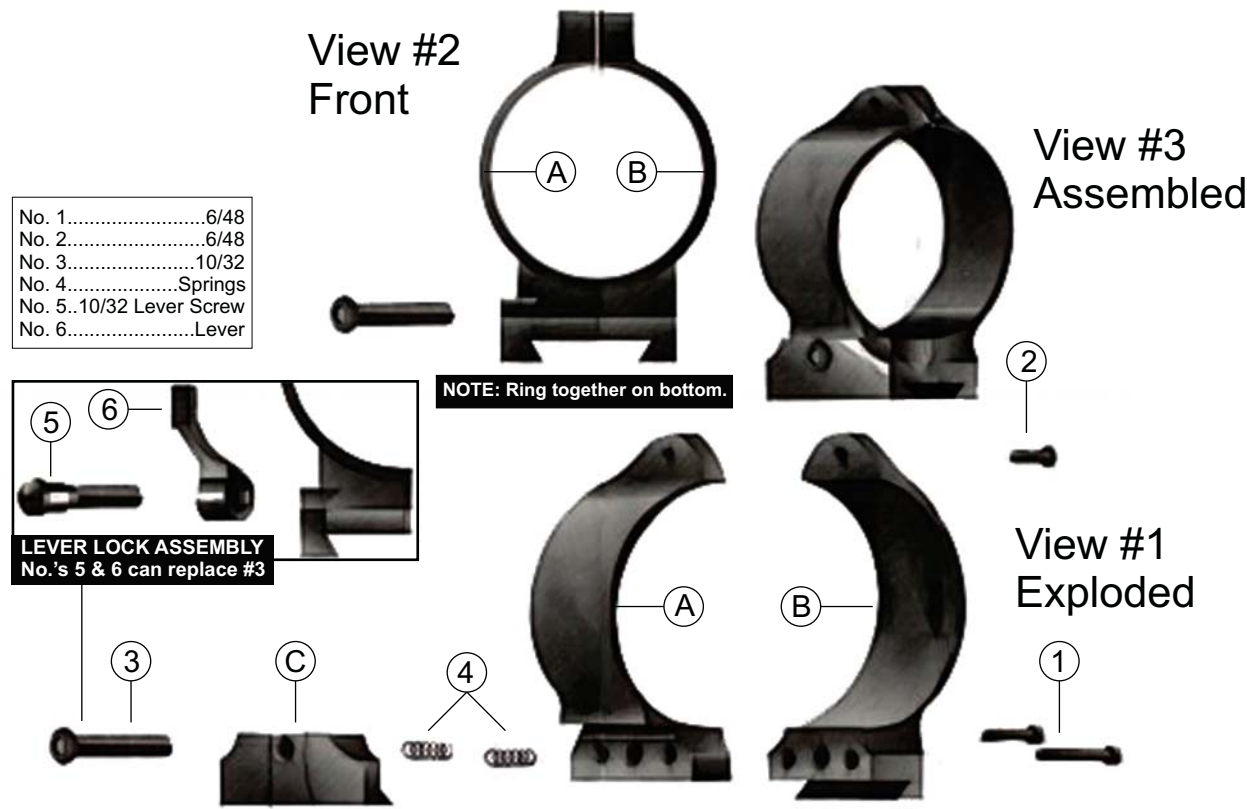
DETACHABLE SCOPE RING ASSEMBLY INSTRUCTIONS

Assembly instructions:

1. Disassemble the scope ring.
2. Place parts (A) & (B) around scope tube and base.
3. Insert screws (1) and tighten completely. **THERE SHOULD BE NO GAP AT BOTTOM OF RING.**
4. Insert springs (4) in the screw holes.
5. Place plate (C) over springs and tighten with screw or with lever assembly.
6. Repeat with next ring.
7. Place the scope on the bases. Tighten the locking plate. This will secure the ring on the base. You can square up the scope reticle and adjust for proper eye relief.
8. Insert screws (2) and tighten.

KEEP ALL ASSEMBLY NUMBERS APPEARING ON THE BOTTOM OF THE RING TOGETHER

Note: The levers should point toward one another. This can be gained by rotating the lever on its screw.



For Technical Assistance, please call Talley Mfg. at 803-854-5700