

Agricultural Duty Motors - General Purpose & Definite Purpose

Automotive
Duty Motors

Pump
Motors

Washguard
Motors

Agricultural
Duty Motors

HVAC / Fan
Motors

Special Voltage
Motors

Definite
Purpose Motors

Brake Motors

IEC Motors



- Gasketed capacitor cases and conduit box covers
- Meets or exceeds NEMA service factors
- Single phase and three phase designs
- Double sealed ball bearings
- Double shielded ball bearings on Ag fan motors
- Condensate drains on general purpose Ag motors
- Low temperature manual overload protected
- High and extra high starting torque ratings
- UL recognized component listing and CSA certified
- 1-year warranty

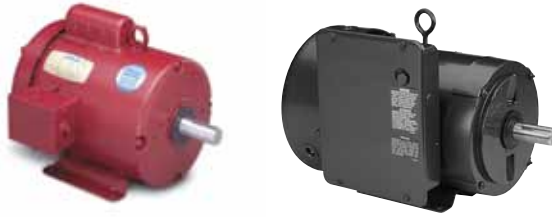
Applications:

For use where exposure to water, dust and dirt exists. Ideally suited for use Farm / Ag equipment such as feeders, conveyors, fans, grain elevators, silo unloaders, and other demanding farm duty equipment.



Agricultural Duty Motors

High Torque - General Purpose



Single Phase - TEFC - Rigid Base

HP	SYN RPM 60 Hz	NEMA Frame	▼ Catalog Number	Stock	List Price	Model Number	App. Wgt. (lbs)	Voltage	Over-load Prot.	F. L. Amps @ 230 V	Service Factor	"C" Dim. (Inches)	♥Notes
1/3	1800	56	113256.00	√	449	M6C17FB66	20	115/208-230	Man.	3.2	1.15	10.81	S, US,
	1800	56	LM24789	√	453	SRF4S0.33T1C6028AP7TP1	24	115/208-230	Man.	3.3	1.15	12.82	S, MX
1/2	1800	56	110086.00	√	523	M6C17FB11	22	115/208-230	Man.	4.4	1.15	10.81	S, US,
	1800	56	LM24790	√	532	SRF4S0.5T1C6028AP7TP1	25	115/208-230	Man.	4.4	1.15	11.82	S, MX
3/4	1800	56	110087.00	√	618	M6C17FB9	26	115/208-230	Man.	5.4	1.15	11.31	S, US,
	1800	56	LM24791	√	626	SRF4S0.75T1C6028AP7TP1	30	115/208-230	Man.	5.5	1.15	12.32	S, MX
1	1800	56	110088.00	√	710	M6C17FB10	30	115/208-230	Man.	7.0	1.15	11.81	S, US,
	1800	56	LM24792	√	715	SRF4S1T1C6028AP7TP1	32	115/208-230	Man.	6.7	1.15	12.82	S, MX
	1800	143T	121569.00	√	715	M143C17FB13	30	115/208-230	Man.	7.0	1.15	12.75	S, US,
	1800	143T	LM24793	√	732	SSF4S1T1C6028AP7TP1	35	115/208-230	Man.	6.7	1.15	12.87	S, MX
1 1/2	1800	56H	110089.00	√	793	M6K17FB3	41	115/208-230	Man.	8.6	1.15	12.61	S, US,
	1800	56H	LM24794	√	807	SRF4S1.5T1B6028AP7TP1	41	115/208-230	Man.	7.6	1.15	13.82	S, MX
	1800	56HZ	113938.00	√	806	M6K17FB39	39	115/208-230	Man.	8.6	1.15	13.25	S, US, 3, 53
	1800	145T	LM24795	√	807	SSF4S1.5T1B6028AP7TP1	42	115/208-230	MAN	7.6	1.15	13.87	S, MX
2	1800	56HZ	110090.00	√	1136	M6K17FB4	43	230	Man.	9.2	1.15	13.75	S, US, 3, 53
	1800	182T	131541.00	√	1211	P182C17FB12	50	115/208-230	Man.	12.4	1.15	14.46	S, MX
	1800	182T	LM24796	C/A	1149	SS182F4S2T1C6027AP7TP1	64	115/208-230	Man.	12.4	1.15	14.46	S, MX
3	1800	184T	131542.00	√	1269	P184C17FB13	83	230	Man.	19.0	1.15	16.46	S, MX
	1800	184T	LM24797	√	1237	SS184F4S3T1C66AP7TP1	92	230	Man.	19.0	1.15	16.46	S, MX
5	1800	184T	131543.00	√	1590	P184K17FB16	96	230	Man.	20.5	1.15	17.46	S, MX, 53
	1800	184T	LM24798	√	1618	SSF4S5T1B66AP71TP1	90	230	Man.	20.5	1.15	17.46	S, MX, 53
7 1/2	1800	215T	140707.00	√	1900	P215K17FB15	144	230	Man.	32.0	1.15	20.21	S, MX, 53
	1800	215T	LM24799	√	1996	SS215F4S7.5T1B66AP7TP1	130	230	Man.	30.0	1.15	21.09	S, MX, 53
10	1800	215T	140706.00	√	2225	P215K17FB16	152	230	Man.	40.0	1.15	20.71	S, MX, 53

▼ LM Numbers are Lincoln Models

♥ Note listing on inside back flap

C/A - Check Availability

Specifications are subject to change without notice

View On-line Technical Information



Automotive Duty Motors

Pump Motors

Washguard Motors

Agricultural Motors

HVAC / Fan Motors

Special Voltage Motors

Definite Purpose Motors

Brake Motors

IEC Motors

Agricultural Duty Motors

ECO-Ag - Premium Efficient Farm Duty Motors

Features:

- Up-to 22% higher efficiency than standard Ag Motors
- Sealed bearings
- Shaft flinger
- High starting torque
- Manual overload protected
- Condensation drains



Single Phase - TEFC - Rigid Base

HP	RPM	Frame	Catalog Number	Stock	List Price	Model Number	App. Wgt. (lbs)	Voltage	Over-load Prot.	F. L. Amps @ 230 V	% F.L. Eff.	Service Factor	"C" Dim. (Inches)	♥Notes
1/3	1800	56	117689.00	✓	493	M6K17FB56	27	115/208-230	Man.	1.7	76.0	1.15	10.99	S, US, 53
1/2	1800	56	117690.00	✓	565	M6K17FB57	30	115/208-230	Man.	2.5	78.0	1.15	11.49	S, US, 53
3/4	1800	56	117691.00	✓	679	M6K17FB60	35	115/208-230	Man.	3.2	82.0	1.15	11.99	S, US, 53
1	1800	56	117692.00	✓	765	M6K17FB58	37	115/208-230	Man.	4.2	83.0	1.15	12.49	S, US, 53
	1800	143T	121973.00	✓	775	M143K17FB3	38	115/208-230	Man.	4.2	83.0	1.15	12.93	S, US, 53
1 1/2	1800	56H	117693.00	✓	872	M6K17FB59	43	115/208-230	Man.	6.5	84.0	1.15	13.49	S, US, 53
	1800	145T	121974.00	✓	886	M143K17FB4	44	115/208-230	Man.	6.5	84.0	1.15	13.93	S, US, 53
2	1800	145T	121975.00	✓	1200	M145K17FB29	49	230	Man.	8.2	85.0	1.15	14.43	S, US, 53

Green items are Premium Efficient

♥ Note listing on inside back flap

Specifications are subject to change without notice

Three Phase Ag Duty Motors - Eco-Ag Designs

Features:

- Premium efficient designs
- Double sealed ball bearings
- Shaft flingers
- Normally closed thermostat protected
- Weep holes provide condensation drains



Three Phase - TEFC - Rigid Base

HP	RPM	Frame	Catalog Number	Stock	List Price	Model Number	App. Wgt. (lbs)	Voltage	Over-load Prot.	F. L. Amps @ 230 V	% F.L. Eff.	Service Factor	"C" Dim. (Inches)	♥Notes
1/2	1800	56	117772.00	✓	550	C6T17TB163	30	208-230/460	T-stat	1.8	77.0	1.15	11.31	S, US
3/4	1800	56	117759.00	✓	602	C6T17FB160A	31	208-230/460	T-stat	2.4	81.5	1.15	11.312	S, US
1	1800	56	117760.00	✓	737	C6T17FB161A	32	208-230/460	T-stat	3.2	85.5	1.15	12.81	S, US
1 1/2	1800	56H	117761.00	✓	752	C6T17FB162A	34	208-230/460	T-stat	4.8	86.5	1.15	13.31	S, US
1 1/2	1800	145T	121997.00	✓	764	C145T17FB98A	35	208-230/460	T-stat	4.8	86.5	1.15	13.75	S, US
2	1800	145T	121998.00	✓	795	C145T17FB99A	45	208-230/460	T-stat	5.8	86.5	1.15	14.76	S, US
3	1800	184T	132328.00	✓	898	C182T17FB54A	80	208-230/460	T-stat	7.8	89.5	1.15	14.96	S, MX
5	1800	184T	132329.00	✓	986	C184T17FB67A	94	208-230/460	T-stat	12.8	89.5	1.15	15.96	S, MX
7 1/2	1800	213T	141145.00	✓	1264	C213T17FB22A	144	208-230/460	T-stat	21.4	91.7	1.15	18.7	S, MX
10	1800	215T	141146.00	✓	1527	C215T17FB23A	161	208-230/460	T-stat	29.0	91.7	1.15	19.7	S, MX

Green items are Premium Efficient

♥ Note listing on inside back flap

Specifications are subject to change without notice



View On-line Technical Information

Agricultural Duty Motors

Extra Hi-Torque



Single Phase - TEFC - Rigid Base

HP	SYN RPM 60 Hz	NEMA Frame	▼ Catalog Number	Stock	List Price	Model Number	App. Wgt. (lbs)	Voltage	Over-load Prot.	F. L. Amps @ 230 V	Service Factor	"C" Dim. (Inches)	♥Notes
2	1800	182T	131541.00	✓	1211	P182C17FB12	50	115/208-230	Man.	12.4	1.15	14.46	S, MX
	1800	182TZ	LM24800	C/A	1134	SS182F4S2TZ1C6027AP8TP-1	67	115/230	Man.	12.8	1.15	15.31	S, MX
3	1800	184T	131542.00	✓	1269	P184C17FB13	83	230	Man.	19.0	1.15	16.46	S, MX
	1800	184T	LM24801	C/A	1299	SS184F4S3T1C66AP8TP1	85	230	Man.	18.0	1.15	16.81	S, MX
5	1800	184T	LM24802	✓	1561	SSF4S5TB6008AP8TP1	125	208-230	Man.	22.5	1.15	17.36	S, MX
	1800	215T	140203.00	✓	1902	P215K17FB3	119	230	Man.	24.0	1.15	18.71	S, MX, 53
	1800	215TZ	140223.00	✓	1937	P215K17FB5	150	230	Man.	24.0	1.15	18.71	S, MX, 4, 53
	1800	213TZ	LM24803	✓	1940	SS213F4S5TZB66AP8TP1-1	126	230	Man.	22.6	1.15	18.34	S, MX, 53
7 1/2	1800	215T	140130.00	✓	2071	P215K17FB2	144	230	Man.	33.6	1.15	20.21	S, MX, 53
	1800	215TZ	140209.00	✓	2232	P215K17FB4	141	230	Man.	33.6	1.15	20.21	S, MX, 4, 53
	1800	215TZ	LM24804	✓	2114	SS215F4S7.5TZ1B66AP8TP1-1	125	230	Man.	30.5	1.15	21.09	S, MX, 53
10	1800	215T	140414.00	✓	2427	P215K17FB6	156	230	Man.	40.0	1.15	20.71	S, MX, 53
	1800	215T	LM24805	✓	2384	SSF4S10T1B66AP8TP1	150	230	Man.	30.5	1.0	21.09	S, MX, 53

▼ LM Numbers are Lincoln Models

♥ Note listing on inside back flap

C/A - Check Availability

Specifications are subject to change without notice

High Torque - C Face Less Base

HP	SYN RPM 60 Hz	NEMA Frame	Catalog Number	Stock	List Price	Model Number	App. Wgt. (lbs)	Voltage	Over-load Prot.	F. L. Amps @ 230 V	Service Factor	"C" Dim. (Inches)	♥Notes
1/3	1800	56C	113290.00	✓	594	M6C17FC59	28	115/208-230	Man.	3.2	1.15	10.81	S, US,
1/2	1800	56C	110492.00	✓	680	M6C17FC12	22	115/208-230	Man.	4.4	1.15	10.81	S, US,
3/4	1800	56C	110493.00	✓	796	M6C17FC13	29	115/208-230	Man.	5.4	1.15	11.31	S, US,
1	1800	56C	110494.00	✓	903	M6C17FC14	33	115/208-230	Man.	7.0	1.15	11.81	S, US,
1 1/2	1800	56C	110495.00	✓	1026	M6K17FC3	43	115/208-230	Man.	8.6	1.15	12.31	S, US, 53
	1800	145TC	120855.00	✓	1332	M145K17FC13	45	230	Man.	9.2	1.15	13.75	S, US, 53
3	1800	184TC	131603.00	✓	1807	P184C17FC5	104	230	Man.	19.0	1.15	16.47	S, MX,
5	1800	184TC	131602.00	✓	2216	P184K17FC7	104	230	Man.	20.5	1.15	17.47	S, MX, 53

Specifications are subject to change without notice

♥ Note listing on inside back flap

High Torque - C-Face With Base

Single Phase - TEFC

HP	SYN RPM 60 Hz	NEMA Frame	Catalog Number	Stock	List Price	Model Number	App. Wgt. (lbs)	Voltage	Over-load Prot.	F. L. Amps @ 230 V	Service Factor	"C" Dim. (Inches)	♥Notes
1/3	1800	56C	116485.00	✓	616	M6C17FK81	29	115/208-230	Man.	3.2	1.15	10.81	S, US,
1/2	1800	56C	116486.00	✓	706	M6C17FK80	23	115/208-230	Man.	4.4	1.15	10.81	S, US,
3/4	1800	56C	116487.00	✓	822	M6C17FK79	30	115/208-230	Man.	5.4	1.15	11.31	S, US,
1	1800	56C	116488.00	✓	933	M6C17FK78	34	115/208-230	Man.	7.0	1.15	11.81	S, US,
1 1/2	1800	56HC	116489.00	✓	1051	M6K17FK47	44	115/208-230	Man.	8.6	1.15	12.81	S, US, 53
2	1800	145TC	121625.00	✓	1339	M145K17FK11	46	230	Man.	9.2	1.15	13.75	S, US, 53
3	1800	184TC	131994.00	✓	1841	P184C17FK10	105	230	Man.	19.0	1.15	16.47	S, MX,
5	1800	184TC	131995.00	✓	2227	P184K17FK13	105	230	Man.	20.5	1.15	17.47	S, MX, 53

Specifications are subject to change without notice

♥ Note listing on inside back flap

View On-line Technical Information



Automotive Duty Motors

Pump Motors

Washguard Motors

Agricultural Motors

HVAC / Fan Motors

Special Voltage Motors

Definite Purpose Motors

Brake Motors

IEC Motors

Agricultural Duty Motors

Fan Duty - Single and Three Phase

Two-Winding Variable Torque PSC Type For Shaft Mounted Fan Application

Features:

- PSC designs offer low in-rush current
- Two speed operation - most ratings
- Automatic overload protected
- Resilient mount for quiet operation
- Corrosion resistant finish



Single Phase - PSC - Variable Torque - TEAO - Resilient Base

HP	SYN RPM 60 Hz	NEMA Frame	Catalog Number	Stock	List Price	Model Number	App. Wgt. (lbs)	Voltage	Over-load Prot.	F. L. Amps @ 230 V	Service Factor	"C" Dim. (Inches)	Notes
1/4	1800	48Z	100803.00	✓	429	A4P17NR1	19	115/230	Auto.	1.4	1.0	10.66	S, MX, 16, 34
	1200	48Z	100824.00	✓	505	A4P11NR2	20	115/230	Auto.	1.4	1.0	10.66	S, MX, 16, 34
	1200	S56Z	100805.00	✓	541	A4P11NJ1	22	115/230	Auto.	1.4	1.0	11.06	S, MX, 17, 34
1/3	1800	48Z	100804.00	✓	462	A4P17NR2	21	115/230	Auto.	1.6	1.0	10.66	S, MX, 16, 34
	1800	S56H	100767.00	✓	499	A4P17NJ1	22	115/230	Auto.	1.6	1.0	10.31	S, MX, 34
	1800	56HY	111348.00	✓	499	A6P17NZ6	24	115/230	Auto.	1.7	1.0	13.44	S, US, 59
	1200	48Z	100825.00	✓	585	A4P11NR3	25	115/230	Auto.	1.8	1.0	11.16	S, MX, 16, 34
	1200	S56HZ	100806.00	✓	621	A4P11NJ2	27	115/230	Auto.	1.8	1.0	11.56	S, MX, 17, 34
1/2	1800	56HZ	111323.00	✓	521	A6P17NR3	30	115/230	Auto.	2.6	1.0	12.56	S, US, 17, 34
	1800	S56H	100768.00	✓	531	A4P17NJ2	36	115/230	Auto.	2.2	1.0	10.81	S, MX, 34
	1200	48Z	101645.00	✓	684	A4P11NR6	33	115/230	Auto.	2.8	1.0	11.16	S, MX, 16, 34
	1200	56HZ	111321.00	✓	672	A6P11NR1	37	115/230	Auto.	3.0	1.0	13.56	S, US, 17, 34
	900	48YZ	M099836.00	✓	466	A4P8NR1	24	115/230	Auto.	3.0	1.0	11.55	S, MX, 19, 34, 50
3/4	900	56HZ	111919.00	✓	832	A6P8NR2	40	115/230	Auto.	3.2	1.0	13.56	S, US, 17, 34, 50
	1800	56HZ	111324.00	✓	770	A6P17NR4	34	115/230	Auto.	3.5	1.0	13.06	S, US, 17
	1800	56H	111266.00	✓	770	A6P17NR1	36	115/230	Auto.	3.5	1.0	12.31	S, US,
1	1200	56HZ	111322.00	✓	794	A6P11NR2	44	115/230	Auto.	4.0	1.0	13.56	S, US, 17, 50
1	1800	56HZ	111267.00	✓	808	A6P17NR2	39	115/230	Auto.	4.4	1.0	12.81	S, US,

Specifications are subject to change without notice

♥ Note listing on inside back flap

Single Phase - PSC Type - Rigid Base - Totally Enclosed Air Over (TEAO)

HP	SYN RPM 60 Hz	NEMA Frame	Catalog Number	Stock	List Price	Model Number	App. Wgt. (lbs)	Voltage	Over-load Prot.	F. L. Amps @ 230 V	Service Factor	"C" Dim. (Inches)	Notes
1/4	1800	48Y	101252.00	✓	423	A4P17NB27	19	115/208-230	Auto.	1.5	1.0	10.90	S, MX, 50
	1800	48Y	100699.00	✓	419	A4P17NB7	19	115/230	Auto.	1.4	1.0	10.65	S, MX
	1800	48Y	M099799.00	✓	332	A4P17NB55	19	115/230	Auto.	1.5	1.0	10.79	S, MX
	1200	48Y	M099260.00	✓	346	A4P11NB23	21	115/230	Auto.	1.2	1.0	10.83	S, MX
1/3	1800	48Y	M090253.00	✓	342	A4P17NB54	22	115/230	Auto.	1.8	1.0	10.47	S, MX, 50
	1800	48Y	101253.00	✓	489	A4P17NB28	22	115/208-230	Auto.	1.9	1.0	10.65	S, MX, 50
	1800	48Y	100700.00	✓	485	A4P17NB8	22	115/230	Auto.	1.6	1.0	10.65	S, MX
	1800	56Y	111202.00	✓	485	A6P17NZ1	24	115/230	Auto.	1.7	1.0	12.00	S, MX, 58
	1800	48Y	M099800.00	✓	376	A4P17NB56	22	115/230	Auto.	1.8	1.0	10.79	S, MX
	1200	48Y	M099261.00	✓	409	A4P11NB24	21	115/230	Auto.	1.5	1.0	11.34	S, MX
	1200	S56Y	100604.00	✓	609	A4P11NH1	23	115/230	Auto.	1.8	1.0	11.40	S, MX
1/2	1800	S56Y	101176.00	✓	517	A4K17NH2	26	115/230	Auto.	3.5	1.0	10.40	S, MX, 50, 54
	1800	48Y	100701.00	✓	514	A4P17NB9	29	115/230	Auto.	2.5	1.0	12.15	S, MX
	1800	48Y	M099801.00	✓	405	A4P17NB57	29	115/230	Auto.	2.5	1.0	10.79	S, MX
	1200	48Y	M099946.00	✓	423	A4P11NB28	26	115/230	Auto.	2.5	1.0	11.81	S, MX
3/4	1200	56HZ	M099847.00	✓	654	A6P11NB4	36	115/230	Auto.	3.6	1.0	13.56	S, MX

Specifications are subject to change without notice

♥ Note listing on inside back flap



View On-line Technical Information

Agricultural Duty Motors

Agricultural Fan

Typically used in Poultry houses or barn exhaust fans

Features:

- TEAO designs - continuous duty
- Extended through bolts
- 1/2" dia. x 2 1/2" long shaft with flats, 90° apart
- Fully gasketed
- Automatic overload protected
- Must be mounted in airstream for proper cooling



Single Phase - PSC - TEAO - Resilient Base

HP	SYN RPM 60 Hz	NEMA Frame	▼ Catalog Number	Stock	List Price	Model Number	App. Wgt. (lbs)	Voltage	Over-load Prot.	F. L. Amps @ 230 V	Service Factor	"C" Dim. (Inches)	♥Notes
1/4	1625	48Z	LM24445	✓	558	SPA4S0.25TZRY1A6027AP11-1	20	115/230	Auto.	1.8	1.0	11.06	S, MX
	1625	48Z	LM24447	✓	432	SPA4S0.25TZRY1A6027AP10-1	17	115/230	Auto.	1.6	1.0	10.09	S, MX
	1075	48Z	LM24442	C/A	516	SPA6S0.25TZRY1A6027AP10-1	14	115/230	Auto.	1.6	1.0	10.09	S, MX
1/3	1625	48Z	LM24450	✓	613	SPA4S0.33TZRY1A6027AP11-1	23	115/230	Auto.	1.9	1.0	11.81	S, MX
	1625	48Z	LM24448	✓	475	SPA4S0.33TZRY1A6027AP10-1	17	115/230	Auto.	2.2	1.0	10.09	S, MX
	1075	48Z	LM24443	✓	591	SPA6S0.33TZRY1A6027AP10-1	15	115/230	Auto.	2.1	1.0	10.84	S, MX
1/2	1625	48Z	LM24446	✓	679	SPA4S0.5TZRY1A6027AP11-1	23	115/230	Auto.	2.7	1.0	11.81	S, MX
	1625	48Z	LM24449	✓	526	SPA4S0.5TZRY1A6027AP10-1	21	115/230	Auto.	3.0	1.0	10.84	S, MX
	1075	48Z	LM24444	✓	679	SPA6S0.5TZRY1A6027AP10-1	19	115/230	Auto.	3.2	1.0	10.84	S, MX

▼ LM Numbers are Lincoln Models

C/A - Check Availability

Specifications are subject to change without notice

♥ Note listing on inside back flap

Grain Dryer / Centrifugal Fan Motors

Used in Ag fan and blower applications.

Screens used to protect against entry of pests and and silage

Features:

- NEMA Premium and Epact efficiency
- Rodent Screens
- Re-greasable Bearings
- Cast Iron construction
- 1.25 Service Factor
- Class F insulation
- Inverter Duty Insulation System
- UL Recognized and CSA certified



Three Phase - Open Drip-Proof (ODP) - Rigid Base

HP	SYN RPM 60 Hz	NEMA Frame	Catalog Number	Stock	List Price	Model Number	App. Wgt. (lbs)	Voltage	F. L. Amps @ 230 V	F.L. Eff.	"C" Dim. (Inches)	♥Notes
10	1800	215T	G151828.60	✓	1052	C215T17DB54	168	208-230/460	25.0	89.5	16.75	C, CN
15	1800	254T	G151540.60	✓	1548	C254T17DB12	265	208-230/460	37.6	91.0	21.89	C, CN
		254T	170540.60	✓	2007	C254T17DB45	279	208-230/460	37.0	93.0	20.94	C, CN
20	1800	256T	G151541.60	✓	1925	C256T17DB7	307	208-230/460	48.0	91.7	23.54	C, CN
		256T	170541.60	✓	2448	C256T17DB10	324	208-230/460	51.0	93.0	22.60	C, CN
25	1800	284T	G151829.60	✓	2105	C284T17DB11	388	208-230/460	59.6	91.7	23.54	C, CN
30	1800	286T	G151542.60	✓	2681	C286T17DB12	434	208-230/460	72.0	92.4	26.57	C, CN
		286T	170542.60	✓	3296	C286T17DB13	471	208-230/460	71.0	93.6	25.00	C, CN

Green items are Premium Efficient

C/A - Check Availability

Specifications are subject to change without notice

♥ Note listing on inside back flap

View On-line Technical Information



Automotive Duty Motors

Pump Motors

Washguard Motors

Agricultural Motors

HVAC / Fan Motors

Special Voltage Motors

Definite Purpose Motors

Brake Motors

IEC Motors

Agricultural Duty Motors

Aeration Fan Motors

Features:

- Belt driven fans or fan on shaft applications
- Capacitor start designs
- Must be mounted in airstream for proper cooling
- Epoxy paint to resist corrosion
- Single-phase models have built-in terminal boards



Single Phase - Capacitor Start - TEAO - Rigid Base

HP	SYN RPM 60 Hz	NEMA Frame	Catalog Number	Stock	List Price	Model Number	App. Wgt. (lbs)	Voltage	Over-load Prot.	F. L. Amps @ 230 V	Service Factor	"C" Dim. (Inches)	♥Notes
3/4	3600	56	111332.00	√	433	C6C34NB15	27	115/230	None	5.0	1.0	10.90	S, US, 22
1	3600	56	111333.00	√	514	C6C34NB16	29	115/230	None	6.0	1.0	10.90	S, US, 22
1 1/2	3600	56	111949.00	√	664	C6C34NB19	32	115/230	None	8.5	1.0	11.40	S, US, 22
	3600	143TZ	120374.00	√	714	C143C34NB1	31	115/230	None	8.5	1.0	11.84	S, US, 22
2	3600	145TZ	120375.00	√	870	C145C34NB1	41	230	None	10.0	1.0	13.34	S, US, 23
3	3600	145T	120376.00	√	915	C145K34NB1	45	230	None	12.8	1.0	13.84	S, US, 23, 53

Specifications are subject to change without notice

♥ Note listing on inside back flap



Three Phase - TEAO - Rigid Base

HP	SYN RPM 60 Hz	NEMA Frame	Catalog Number	Stock	List Price	Model Number	App. Wgt. (lbs)	Voltage	F. L. Amps @ 230 V	Service Factor	"C" Dim. (Inches)	♥Notes
3/4	3600	56Z	111334.00	√	443	C6T34NB18	21	208-230/460	2.4	1.0	9.90	S, US, 22
1	3600	56Z	111335.00	√	481	C6T34NB19	22	208-230/460	3.2	1.0	9.90	S, US, 22
1 1/2	3600	143TZ	120377.00	√	553	C143T34NB2	31	208-230/460	4.2	1.0	11.34	S, US, 22
2	3600	145TZ	120378.00	√	654	C145T34NB1	34	208-230/460	5.6	1.0	11.84	S, US, 22
3	3600	145T	120379.00	√	734	C145T34NB2	38	230/460	7.6	1.0	12.34	S, US, 23

Specifications are subject to change without notice

♥ Note listing on inside back flap



View On-line Technical Information

Agricultural Duty Motors

Crop Dryer Motors

Used on Crop Dryers with air over/fan on shaft designs

Features:

- Class "F" insulation system
- Overload protected
- Keyed shaft with 1/4-20 UNC tapped hole on end
- 34" long leads
- Capacitors shipped loose on 1-phase designs
- Motor venting protected against insects and rodents
- Double sealed ball bearings



Single Phase - Drip-Proof Air Over - Rigid Base

HP	SYN RPM 60 Hz	NEMA Frame	▼ Catalog Number	Stock	List Price	Model Number	App. Wgt. (lbs)	Voltage	Over-load Prot.	F. L. Amps @ 230 V	Service Factor	"C" Dim. (Inches)	♥Notes
3-4.5	3600	145TZ	LM24778	✓	1159	SSD2S3-4.5TZ1B66QS10-1	46	230	Auto	13.0-19.0	1.5	13.74	S, MX
5 - 7	3600	182TZ	131847.00	✓	1361	C182C34DB2	91	230	T-Stat	27.2-35.0	1.0	16.44	S, MX
		184TZ	LM24779	C/A	1430	SS18D2S5-7TZ1C66QS11-1	76	230	T-Stat	27.2-35	1.0	14.50	S, MX
7.5-10	3600	182TZ	131848.00	✓	1513	C182K34DB4	95	230	T-Stat	31.0-42.0	1.0	16.44	S, MX
7-10	3600	184TZ	LM24780	✓	1897	SSD2S7-10TZ1B66QS11-1	102	230	T-Stat	31-42	1.4	15.94	S, MX
7-9	3600	184TZ	LM24781	C/A	1536	SSD2S7-9TZ1C66QSS11-1	88	230	T-Stat	31-42	1.3	15.50	S, MX
10 - 15	3600	215TZ	140640.00	✓	2326	C215K34DB2	159	230	T-Stat	39.5-61.5	1.0	20.42	S, MX
		215TZ	LM24782	✓	2410	SS215D2S10-15TZ1C66QS11-1	135	230	T-Stat	39.5-61.5	1.5	18.16	S, MX
		215TZ	141084.00	✓	2326	C215K34DB3	159	230	T-Stat	40.0	1.0	20.08	S, MX, 52

▼ LM Numbers are Lincoln Models

♥ Note listing on inside back flap

C/A - Check Availability

Specifications are subject to change without notice

Three Phase - Drip-Proof Air Over - Rigid Base

HP	SYN RPM 60 Hz	NEMA Frame	▼ Catalog Number	Stock	List Price	Model Number	App. Wgt. (lbs)	Voltage	Over-load Prot.	F. L. Amps @ 230 V	Service Factor	"C" Dim. (Inches)	♥Notes
5-7.5	3600	184TZ	131849.00	✓	1102	C184T34DB8	70	208-230/460	T-Stat	19.0	1.0	13.94	S, MX
		184TZ	LM24783	C/A	1207	SS184D2S5-7TZ6029QS12-1	70	208-230/460	T-Stat	18.0	1.0	14.71	S, MX
7.5-10	3600	184TZ	131850.00	✓	1287	C184T34DB9	85	208-230/460	T-Stat	24.2	1.0	15.44	S, MX
		184TZ	LM24784	C/A	1281	SSD2S7-10TZ6029QS12-1	83	208-230/460	T-Stat	19.0	1.0	14.22	S, MX
10 - 15	3600	215TZ	140641.00	✓	1553	C215T34DB3	95	208-220/440	T-Stat	40.0	1.5	17.41	S, MX
		215TZ	LM24785	C/A	1689	SS215D2S10-15TZ6029QS12-1	115	208-220/440	T-Stat	26.0	1.0	17.41	S, MX

▼ LM Numbers are Lincoln Models

♥ Note listing on inside back flap

C/A - Check Availability

Specifications are subject to change without notice

View On-line Technical Information



Automotive Duty Motors

Pump Motors

Washguard Motors

Agricultural Motors

HVAC / Fan Motors

Special Voltage Motors

Definite Purpose Motors

Brake Motors

IEC Motors

Agricultural Duty Motors

Grain Stirring Motors

Used in Grain stirring systems inside grain bins

Features:

- TEFC, continuous duty
- High torque designs
- Rugged 205 bearing, shaft end
- Vertical shaft up design with drain hole
- 7/8" Dia. Shaft



Single Phase - Rigid Base - TEFC

HP	SYN RPM 60 Hz	Frame	▼ Catalog Number	Stock	List Price	Model Number	App. Wgt. (lbs)	Voltage	Over- load Prot.	F. L. Amps @ 230 V	Service Factor	"C" Dim. (Inches)	♥Notes
1 1/2	1800	56HZ	111330.00	√	845	P6K17FB18	42	115/208-230	Man.	8.6	1.00	12.31	S, US, 53
	1800	56HZ	LM24521	√	847	SRF4S1.5TZ1B6028AP9-2	47	115/208-230	Man.	7.6	1.15	13.21	S, US, 53

▼ LM Numbers are Lincoln Models

♥ Note listing on inside back flap

Specifications are subject to change without notice

Three Phase - Rigid Base - TEFC

HP	SYN RPM 60 Hz	Frame	▼ Catalog Number	Stock	List Price	Model Number	App. Wgt. (lbs)	Voltage	F. L. Amps @ 230 V	% F. L. Eff.	Service Factor	"C" Dim. (Inches)	♥Notes
1 1/2	1800	56HZ	111329.00	√	859	M6T17FB49	38	208-230/460	5.4	80.0	1.00	11.81	S, US, 53

Specifications are subject to change without notice

♥ Note listing on inside back flap

Catfish Pond Motors

Designed for outdoor pond aeration applications

Features:

- High torque designs
- Epoxy painted for corrosion protection
- Double sealed ball bearings
- Drain holes provided to purge condensation



Single Phase and Three Phase - C Face With Base - TEFC

HP	SYN RPM 60 Hz	Frame	Catalog Number	Stock	List Price	Model Number	App. Wgt. (lbs)	Voltage	Over- load Prot.	Phase	F. L. Amps @ 230 V	Service Factor	"C" Dim. (Inches)	♥Notes
10	1800	215TC	140705.00	√	2569	P215K17FK5	204	230	Man.	1	40.0	1.15	20.71	S, MX,
	1800	215TC	140833.00	√	1546	C215T17FK19	169	208-230/460	None	3	23.6	1.15	19.70	S, MX,

Green items are Premium Efficient

♥ Note listing on inside back flap

Specifications are subject to change without notice



View On-line Technical Information

Agricultural Duty Motors Irrigation Booster Pump Motors

Used in agricultural duty irrigation systems

Features:

- Threaded jet pump motor shaft
- Vertical Shaft down design
- Rain canopy provided
- Epoxy painted for corrosion protection
- Neoprene shaft flinger



Three Phase - Irrigation Booster - TEFC

HP	SYN RPM 60 Hz	NEMA Frame	▼ Catalog Number	Stock	List Price	Model Number	App. Wgt. (lbs)	Voltage	F. L. Amps @ 460 V	Service Factor	"C" Dim. (Inches)	♥Notes
2	3600	56J	112991.00	√	824	A6T34FC33	33	460	84.0	1.5	14.34	S, US

Specifications are subject to change without notice

♥ Note listing on inside back flap

Irrigation Drive Motors

Features:

- Double-sealed ball bearings
- Designed for vertical shaft down applications
- Rain canopy protects against water contamination



Three Phase - C Face Less Base - TEFC

HP	SYN RPM 60 Hz	NEMA Frame	▼ Catalog Number	Stock	List Price	Model Number	App. Wgt. (lbs)	Voltage	F. L. Amps @ 460 V	Service Factor	"C" Dim. (Inches)	♥Notes
1	1800	56C	111304.00	√	796	A6T17FC33	30	460	75.0	1.25	12.34	S, US

Specifications are subject to change without notice

♥ Note listing on inside back flap

Milk Transfer Pump Motor

Features:

- Direct replacement for Surge milk pumps
- Double sealed ball bearings
- Epoxy painted for corrosion protection
- Permanent split capacitor design
- Requires 30 MFD, 370 V. capacitor - not supplied



Single Phase - Rigid Base - TENV

HP	SYN RPM 60 Hz	NEMA Frame	▼ Catalog Number	Stock	List Price	Model Number	App. Wgt. (lbs)	Voltage	F. L. Amps @ 230 V	Service Factor	"C" Dim. (Inches)	♥Notes
1/2	3600	56CZ	113939.00	√	553	C6P34NK5	42	230	4.5	SPEC	13.07	S, US

Specifications are subject to change without notice

♥ Note listing on inside back flap

View On-line Technical Information



Automotive Duty Motors

Pump Motors

Washguard Motors

Agricultural Motors

HVAC / Fan Motors

Special Voltage Motors

Definite Purpose Motors

Brake Motors

IEC Motors

Agricultural Duty Motors

Feed-Auger Drive Motors - Dust Tight

Replacement motors for poultry feed auger drive systems

Features:

- Choice of mechanical or solid state starting switch
- Mechanical switch has over-speed protection
- Manual overload protected



Single Phase - TEFC - 60 Hertz

HP	SYN RPM 60 Hz	NEMA Frame	▼ Catalog Number	Stock	List Price	Model Number	App. Wgt. (lbs)	Voltage	Over-load Prot.	F. L. Amps @ 230 V	Service Factor	"C" Dim. (Inches)	♥Notes
1/3	1800	48YZ	101159.00	√	564	P4C17FZ11	21	115/230	Man.	3.1	1.0	10.47	S, MX, 26
	1800	48YZ	101435.00	√	542	M4C17FZ16	21	115/230	Man.	3.1	1.0	10.47	S, MX, 26, 51
	1800	48N	LM24462	√	545	SPA4S0.33TADN1C6027TP1	23	115/230	Man.	2.5	1.5	11.31	S, MX, 26, 51
1/2	1800	48YZ	101120.00	√	635	P4C17FZ7	22	115/208-230	Man.	4.0	1.15	10.72	S, MX, 26
	1800	48YZ	101436.00	√	621	M4C17FZ17	22	115/208-230	Man.	4.0	1.15	10.47	S, MX, 26, 51
	1800	48N	LM24463	√	621	SPA4S0.5TADN1C6027TP1	23	115/230	Man.	3.4	1.0	11.81	S, MX, 26, 51
3/4	1800	48YZ	101119.00	√	742	P4C17FZ6	24	115/208-230	Man.	5.4	1.0	11.47	S, MX, 26
	1800	48YZ	101437.00	√	639	M4C17FZ18	28	115/230	Man.	5.4	1.0	11.47	S, MX, 26, 51
	1800	48N	LM24812	√	644	SRF4S0.75TZADN1C6028TP1-1	31	115/208-230	Man.	5.5	1.0	12.59	S, MX, 26, 51
1	1800	56YZ	112615.00	√	822	P6C17FZ27	35	115/230	Man.	7.0	1.0	12.11	S, MX, 26
	1800	56YZ	113302.00	√	801	M6C17FZ31	35	115/208-230	Man.	7.0	1.0	12.61	S, MX, 26, 51
	1800	56NZ	LM24813	√	801	SRF4S1TZADN1C6028TP-1	32	115/208-230	Man.	6.7	1.0	13.39	S, MX, 26, 51
1 1/2	1800	56YZ	113280.00	√	1365	P6K17FZ6	47	115/208-230	Man.	6.5	1.0	13.62	S, MX, 27, 53
	1800	56YZ	113301.00	√	1347	M6K17FZ7	44	115/230	Man.	6.5	1.0	13.62	S, MX, 27, 51, 53
	1800	56NZ	LM24814	√	1348	SRF4S1.5TZADN1C6028TP1-1	41	115/208/230	Man.	7.6	1.0	14.38	S, MX, 27, 51, 53

▼ LM Numbers are Lincoln Models

♥ Note listing on inside back flap

Specifications are subject to change without notice

Single Phase - TEFC - 50 Hertz

HP	SYN RPM 60 Hz	NEMA Frame	Catalog Number	Stock	List Price	Model Number	App. Wgt. (lbs)	Voltage	Over-load Prot.	F. L. Amps @ 220 V	Service Factor	"C" Dim. (Inches)	♥Notes
1/2	1800	48YZ	101643.00	C/A	687	M4C14FZ5	26	110/220	Man.	4.0	1.0	11.47	S, MX, 26, 51
3/4	1800	48YZ	101644.00	√	738	M4C14FZ6	30	110/220	Man.	5.8	1.0	12.22	S, MX, 26, 51
1	1800	56YZ	113906.00	√	897	M6C14FZ8	39	110/220	Man.	6.4	1.0	12.61	S, MX, 27, 51
1 1/2	1800	56YZ	113907.00	√	1500	P6K14FZ2	48	110/220	Man.	8.6	1.0	13.61	S, MX, 27, 51

C/A - Check Availability

♥ Note listing on inside back flap

Specifications are subject to change without notice



View On-line Technical Information



Agricultural Duty Motors

Hatchery and Incubator Fan Motors

Replacement motors for hatchery and incubator fan motors

Features:

- Automatic overload protected
- 15 MFD, 370 V. capacitor shipped loose with motor 101341.00
- Motor 114102.00 is a split phase two-speed motor
- Double shielded ball bearings



Cat. No. 101341



Cat. No. 114102

Single Phase - TEAO

HP	SYN RPM 60 Hz	NEMA Frame	Catalog Number	Stock	List Price	Model Number	App. Wgt. (lbs)	Voltage	Over- load Prot.	F. L. Amps @ 230 V	Service Factor	"C" Dim. (Inches)	♥Notes
1/4	1800	48Y	101341.00	√	427	A4P17NZ24	17	115/230	Auto.	1.4	1.00	8.93	S, US, 16, 34, 58
1/2-0.22	1800/1200	56H	114102.00	√	557	A6S46NR4	33	115	Auto.	9.3-5.6*	1.25	11.81	S, US

* Full Load amps are at high speed and low speeds, respectively at 115 volts

♥ Note listing on inside back flap

Specifications are subject to change without notice

Feather Picker Motors

Replacement motors used in Poultry feather picker machines

Features:

- Phosphatized or stainless steel shafts drilled and tapped metric shafts
- Epoxy painted for corrosion protection
- Washdown duty features including shaft seals
- USDA approved food-safe paint
- Extra high breakdown torques



Three Phase - TEFC

HP	SYN RPM 60 Hz	NEMA Frame	Catalog Number	Stock	List Price	Model Number	App. Wgt. (lbs)	Voltage	F. L. Amps @ 230 V	F.L. Eff.	Service Factor	"C" Dim. (Inches)	♥Notes
2	1800	145T	121934.00	√	883	C145T17FB87	54	208-230/460	7.0	86.5	1.25	14.76	S, US
2	1200	184TZ	132246.00	√	1346	C184T11FB24	96	230/460	7.2	88.5	1.5	15.96	S, MX
2/1.5	1200	112M	132247.00	√	1408	C184T11FB25	96	230/460	7.2	88.5	1.5	15.96	S, MX, 29
3	1800	56HZ	115751.00	√	995	C6T17FB113	45	208-230/460	8.6	82.5	1.0	14.25	S, US, 5
	1800	145T	121944.00	√	995	C145T17FB92	45	230/460	8.6	82.5	1.0	14.25	S, US, 56

Green items are Premium Efficient

♥ Note listing on inside back flap

Note: Catalog Number 115751 has a 303 stainless steel shaft.

Specifications are subject to change without notice

View On-line Technical Information



Automotive
Duty Motors

Pump
Motors

Washguard
Motors

Agricultural
Motors

HVAC / Fan
Motors

Special Voltage
Motors

Definite
Purpose Motors

Brake Motors

IEC Motors

Agricultural Duty Motors

Industry-AG • High Torque

General Purpose, heavy duty for industrial and agriculture applications

Features:

- Manual overload protected
- Double sealed ball bearings
- Weather resistant reset button protection
- Capacitor start provides high starting torque



Rigid Base - 115-208/230V - TEFC

HP	SYN RPM 60 Hz	NEMA Frame	Catalog Number	Stock	List Price	Model Number	App. Wgt. (lbs)	Voltage	Over- load Prot.	F. L. Amps @ 230 V	Service Factor	"C" Dim. (Inches)	♥Notes
1/3	1800	56	M002256.00	✓	435	M6C17FB142	24	115-208/230	Man.	2.9	1.15	11.00	S, CN
1/2	1800	56	M009086.00	✓	514	M6C17FB143	27	115-208/230	Man.	3.9	1.15	11.00	S, CN
3/4	1800	56	M009087.00	✓	599	M6C17FB144	30	115-208/230	Man.	5.0	1.15	11.50	S, CN
1	1800	56	M009088.00	✓	630	M6C17FB145	34	115-208/230	Man.	6.8	1.15	11.50	S, CN
1 1/2	1800	56	M009089.00	✓	746	M6K17FB49	41	115-208/230	Man.	9.0	1.00	12.88	S, CN
2	1800	56HZ	M009090.00	✓	1063	M145K17FB27	48	230	Man.	9.5	1.00	14.00	S, CN

These motors use C Face Kit M064076.00

♥ Note listing on inside back flap

Specifications are subject to change without notice

C Face Less Base - 115-208/230 - TEFC

HP	SYN RPM 60 Hz	NEMA Frame	Catalog Number	Stock	List Price	Model Number	App. Wgt. (lbs)	Voltage	Over- load Prot.	F. L. Amps @ 230 V	Service Factor	"C" Dim. (Inches)	♥Notes
1/3	1800	56C	M002290.00	✓	529	M6C17FC140	24	115-208/230	Man.	2.9	1.15	10.81	S, CN
1/2	1800	56C	M009492.00	✓	580	M6C17FC141	27	115-208/230	Man.	3.9	1.15	10.81	S, CN
3/4	1800	56C	M009493.00	✓	654	M6C17FC142	30	115-208/230	Man.	5.0	1.15	11.31	S, CN
1	1800	56C	M009494.00	✓	680	M6C17FC143	34	115-208/230	Man.	6.8	1.15	11.81	S, CN

Specifications are subject to change without notice

♥ Note listing on inside back flap



View On-line Technical Information

Agricultural Duty Motors

Variable Speed - High Performance AG Fan Motors

Designed for use in agricultural fan applications where variable speed is required

Features:

- Water-tight connection end compartment
- Locked double sealed ball bearings
- All angle mounting
- Shaft seal on output shaft end
- Automatic overload protected



Single Phase - TEAO - Rigid Base - Extended Thru-Bolts

HP	SYN RPM 60 Hz	NEMA Frame	Catalog Number	Stock	List Price	Model Number	App. Wgt. (lbs)	Voltage	Over- load Prot.	F. L. Amps @ 230 V	Service Factor	"C" Dim. (Inches)	♥Notes
1/4	1800	48Y	M099899.00	✓	328	A4P17NB58	18	115-208/230	Auto.	1.3	1.0	11.3	S, CN
	1200	48Y	M099460.00	✓	354	A4P11NB25	21	115/208-230	Auto.	1.3	1.0	11.8	S, CN
1/3	1800	48Y	M099900.00	✓	350	A4P17NB59	19	115-208/230	Auto.	1.8	1.0	11.3	S, CN
	1200	48Y	M099461.00	✓	379	A4P11NB26	22	115/208-230	Auto.	1.9	1.0	11.8	S, CN
1/2	1800	48Y	M099901.00	✓	388	A4P17NB60	22	115-208/230	Auto.	2.6	1.0	11.7	S, CN
	1200	48Y	M099462.00	✓	413	A4P11NB27	25	115/208-230	Auto.	2.8	1.0	12.2	S, CN

Specifications are subject to change without notice

♥ Note listing on inside back flap

Agricultural Fan Motors - Belt Drive • TEAO

Designed for use in agricultural belted fan applications

Features:

- Capacitor start / Capacitor run designs for high efficiency
- Mount in airstream for proper cooling
- Combination 56 / 140 frame stamped steel base



High-Efficiency - Single-Phase

HP	SYN RPM 60 Hz	NEMA Frame	Catalog Number	Stock	List Price	Model Number	App. Wgt. (lbs)	Voltage	Over- load Prot.	F. L. Amps @ 230 V	Service Factor	"C" Dim. (Inches)	♥Notes
1/2	1800	56	M009580.00	✓	475	A6K17NB21	27	115/208-230	-	4.4	-	10.33	S, CN
3/4	1800	56H	M009581.00	✓	503	A6K17NB15	30	115/208-230	Auto.	3.4	82	10.83	S, CN
1	1800	56H	M009782.00	✓	524	A6K17NB17	37	115/208-230	Auto.	4.3	85	11.80	S, CN
1 1/2	1800	56H	M009594.00	✓	625	A6K17NB16	39	115/208-230	Auto.	6.8	78	12.60	S, CN
2	1800	145T	M009595.00 *	✓	694	M145K17NB1	47	230	Auto	9.5	82	12.80	S, CN

* Motor M009595 has a frame mounted conduit box.

♥ Note listing on inside back flap

Specifications are subject to change without notice

View On-line Technical Information



Automotive
Duty Motors

Pump
Motors

Washguard
Motors

Agricultural
Motors

HVAC / Fan
Motors

Special Voltage
Motors

Definite
Purpose Motors

Brake Motors

IEC Motors

Agricultural Duty Motors

Agriculture Fan

115/230 Volts - Belt Drive - Overload Protection

Features:

- Capacitor start/capacitor run design
- Ball bearings
- LM24777 must be mounted in airstream



Single Phase - TENV - Rigid Base

HP	SYN RPM 60 Hz	NEMA Frame	▼ Catalog Number	Stock	List Price	Model Number	App. Wgt. (lbs)	Voltage	Over- load Prot.	F. L. Amps @ 230 V	Service Factor	"C" Dim. (Inches)	♥Notes
1/2	1800	56Z	LM24776	√	669	SRN4S0.5TZ1B6027TP2-1	21	115/230	Auto	2.3	1.0	10.47	S, MX, 12, 53
1	1800	56Z	LM24777*	√	895	SRA4S1TZ1B6027TP2-1	32	115/230	Auto	4.6	1.0	10.72	S, MX, 53

▼ LM Numbers are Lincoln Models

♥ Note listing on inside back flap

* LM24777 is a TEAO design

Specifications are subject to change without notice

Agriculture Fan

Direct Drive Through-Bolt Mount

Features:

- 1/2" long through bolts
- 48Y - 1/2" dia., 1-1/2 long shaft with flat
- 48YZ - 1/2" dia., 2-1/2" long shaft with two flats



Single Speed - Single Phase - TEAO - Through Bolt Mount

HP	SYN RPM 60 Hz	NEMA Frame	▼ Catalog Number	Stock	List Price	Model Number	App. Wgt. (lbs)	Voltage	Over- load Prot.	F. L. Amps @ 115 V	Service Factor	"C" Dim. (Inches)	♥Notes
1/4	1725	48Y	LM24488	√	407	SPN4S0.25TZNY1S6001TP1-1	10	115	Auto	4.0	1.0	7.62	S, MX

▼ LM Numbers are Lincoln Models

♥ Note listing on inside back flap

Specifications are subject to change without notice

Two Speed - Single Phase - TEAO - Through Bolt Mount

HP	SYN RPM 60 Hz	NEMA Frame	▼ Catalog Number	Stock	List Price	Model Number	App. Wgt. (lbs)	Voltage	Over- load Prot.	F. L. Amps @ 115 V	Service Factor	"C" Dim. (Inches)	♥Notes
1/4	1725/1140	48YZ	LM24492	√	424	SPA4/6/1S0.25/0.25TZNY1S6001TP2-1	17	115	Auto	4.1	1.0	11.09	S, MX
1/3	1725/1140	48YZ	LM24491	√	477	SPA4/6/1S0.33/0.33TZNY1S6001TP2-1	18	115	Auto	5.3	1.0	11.34	S, MX

▼ LM Numbers are Lincoln Models

♥ Note listing on inside back flap

C/A - Check Availability

Specifications are subject to change without notice



View On-line Technical Information

Agricultural Duty Motors

Agriculture Fan

Features:

- 115 & 230 Volts • Single Phase
- Extended through-bolts on 48Z frame motos
- 48Z - 1/2 dia. shaft, 2-1/2 long with two flats
- 56Z - 1/2 dia. shaft, 2-1/2" long shaft with keyway
- Includes 5/8" shaft adaptor sleeve with key



Single-Phase - TEAO - Resilient Base

HP	SYN RPM 60 Hz	NEMA Frame	▼ Catalog Number	Stock	List Price	Model Number	App. Wgt. (lbs)	Voltage	Over-load Prot.	F. L. Amps @ 230 V	Service Factor	"C" Dim. (Inches)	♥Notes
1/4	1800	48Z	LM24487	C/A	424	SPA4S0.25TZRY1S6001TP2-1	17	115	Auto	3.5*	1.0	10.09	S, MX
1/3	1800	48Z	LM24486	√	477	SPA4S0.33TZRY1S6001TP2-1	21	115	Auto	4.5*	1.0	10.09	S, MX
1/2	1800	56Z	LM24809	C/A	645	SRA4S0.5TZR1S6027TP2-1	24	115/230	Auto	3.3	1.0	11.34	S, MX

▼ LM Numbers are Lincoln Models

♥ Note listing on inside back flap

* Amps at 115 Volts

C/A - Check Availability

Specifications are subject to change without notice

Aeration Fan, HVAC 115 & 230 VOLTS • Single Phase

Features:

- Automatic overload protected
- Sealed bearings
- 18" extended leads
- Shaft has keyway and 1/4-20 UNC tapped hole on end of shaft

Single Phase - TEAO - Rigid Base

HP	SYN RPM 60 Hz	NEMA Frame	▼ Catalog Number	Stock	List Price	Model Number	App. Wgt. (lbs)	Voltage	Over-load Prot.	F. L. Amps @ 230 V	Service Factor	"C" Dim. (Inches)	♥Notes
1	3600	56Z	LM24786	√	518	SRA2S1TZ1C6027L10MB6TP2-1	29	115/230	Auto	5.6	1.15	10.94	S, MX
1 1/2	3600	143TZ	LM24787	√	588	SSA2S1.5TZ1C6027L10MB6TP2-1	35	115/230	Auto	8.4	1.15	11.49	S, MX
3	3600	145TZ	LM24788	√	724	SS145A2S3TZ1B66L10MB6TP2-1	52	230	Auto	11.8	1.15	13.49	S, MX

▼ LM Numbers are Lincoln Models

♥ Note listing on inside back flap

Specifications are subject to change without notice

View On-line Technical Information



Automotive
Duty Motors

Pump
Motors

Washguard
Motors

Agricultural
Motors

HVAC / Fan
Motors

Special Voltage
Motors

Definite
Purpose Motors

Brake Motors

IEC Motors