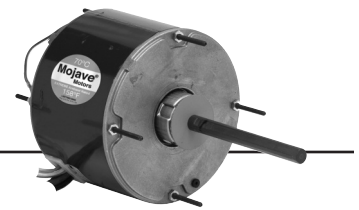


Permanent Split Capacitor MOJAVE™ Series Condenser Fan 5.6" Diameter, Totally Enclosed Air Over (TEAO)

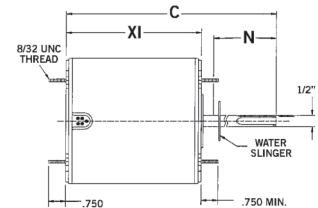


APPLICATIONS:

Residential and commercial condensing unit fan motors in extreme temperature locations.

FEATURES:

- 158°F (70°C) Ambient Design
- Ball Bearings Have All Angle Thrust System
- Class F Insulation
- Designed For Use With 370V Capacitors
- Extended Studs
- 48" Leads
- Hubless Lead End
- Drain Holes Both Ends
- Reversible Rotation
- Automatic Reset Thermal Overload Protector
- Continuous Duty
- **Discount Symbol: DS-3HAC**



Stud Mount, Without Capacitor, Extreme High Ambient Design, All Angle Mount

| HP | RPM/ Spd. | Volts | Catalog Number | List Price | Bearings | Cap. MFD | Amps | Shaft N | Shell XI | Total C | Ship Wgt. | Notes |
|---------|--------------|---------|-------------------|---------------|----------|-------------|------|------------|-------------|------------|--------------|-------|
| 1/8 | 825 | 208-230 | 1872H | \$160 | Ball | 5.0 | 0.78 | 6.0 | 4.3 | 10.6 | 13.7 | |
| 1/4-1/8 | 825 | 208-230 | 1874H | \$173 | Ball | 5.0 | 2.1 | 6.0 | 4.4 | 10.9 | 13.0 | H25 |
| 1/6 | 825 | 208-230 | 1873H | \$172 | Ball | 5.0 | 1.2 | 6.0 | 4.3 | 10.6 | 17.0 | |
| | 1075 | 208-230 | 1859H | \$115 | Ball | 5.0 | 1 | 5.0 | 4.0 | 9.4 | 18.1 | |
| 1/4 | 1075 | 208-230 | 1860H | \$113 | Ball | 5.0 | 1.7 | 6.0 | 4.1 | 10.6 | 12.0 | |
| 1/3 | 1075 | 208-230 | 1861H | \$119 | Ball | 7.5 | 2.1 | 6.0 | 4.6 | 11.1 | 14.0 | |
| | 825 | 208-230 | 1875H | \$196 | Ball | 7.5 | 2.4 | 6.0 | 5.3 | 11.6 | 17.0 | |
| 1/2 | 1075 | 208-230 | 1862H | \$133 | Ball | 10.0 | 3.2 | 6.0 | 5.3 | 11.9 | 18.0 | |
| | 825 | 208-231 | 1870H | \$250 | Ball | 10.0 | 3.3 | 6.0 | 6.1 | 12.4 | 17.0 | |
| 3/4 | 1075 | 208-230 | 1868H | \$162 | Ball | 10.0 | 4.7 | 6.0 | 5.8 | 12.4 | 20.0 | |

460 Volt

| HP | RPM/ Spd. | Volts | Catalog Number | List Price | Bearings | Cap. MFD | Amps | Shaft N | Shell XI | Total C | Ship Wgt. | Notes |
|-----|--------------|-------|-------------------|---------------|----------|-------------|------|------------|-------------|------------|--------------|-------|
| 1/4 | 1075 | 460 | 3736H | \$248 | Ball | 7.5 | 0.8 | 6 | 4.8 | 11.1 | 18.1 | |
| 1/3 | 1075 | 460 | 3737H | \$282 | Ball | 7.5 | 1.3 | 6 | 5.6 | 11.9 | 18.1 | |
| 1/2 | 1075 | 460 | 3738H | \$291 | Ball | 10 | 1.5 | 6 | 5.8 | 12 | 18.1 | |
| 3/4 | 1075 | 460 | 3742H | \$327 | Ball | 10 | 2 | 6 | 6.6 | 12.9 | 18.1 | |

See Page 137 for Additional Rescue® MOJAVE™ Ratings.

Note H25 Includes 4 Holes With Screws In Shell For Rheem®† Mount

† All marks shown within this document are properties of their respective owners