

MRE055

MR PowerMAX GSM 900/3G XT+

Description

The MR PowerMAX 900/3G XT+ Mobile Repeater kit is a high powered kit which boost signal strength and coverage for the GSM 900 networks and all 3G services.

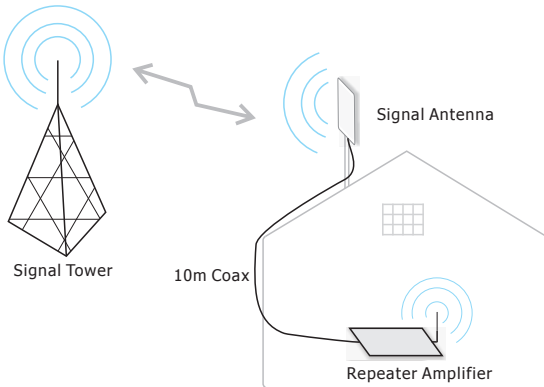
The PowerMAX 900/3G XT+ is compatible with all GSM 900 and 3G 2100 services and guaranteed to provide improved coverage for your mobile phone signal over an area up to 1000 sq m. The kit comes complete with everything you need to increase signal strength and stop dropped calls.



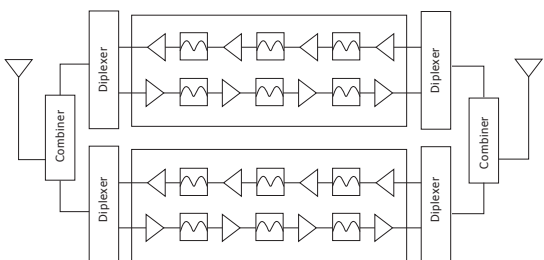
Key Features

- ✓ Dual Band GSM 900 / 3G 2100
- ✓ 70 dB gain
- ✓ Coverage up to 2,500 sq m
- ✓ Supports up to 100 users
- ✓ High gain signal antenna
- ✓ Works with ALL GSM900 and 3G networks

Working Principle



System Diagram



Package includes

- 1 x PowerMAX XT+ dual band GSM 900/3G repeater
- 1 x External aerial antenna
- 1 x Indoor rubber whip re-broadcast aerial
- 1 x 10 meter coax cable for external aerial
- 1 x AC/DC power supply
- 1 x Installation manual

Electrical Specifications

Item	Uplink	Downlink
Frequency (GSM900)	890-915MHz	935-960MHz
Frequency (GSM1800)	1920-1990MHz	2110-2180MHz
Maximum Gain	≅ 65dB	≅ 70dB
Ripple in Band	≅ 5dB	
Max. Input Power without damage	- 50 dBm	- 80 dBm
Output Power	≅ 27 dBm	
Spurious Emission (9KHz-1GHz)	≅ -36dBm	≅ -36dBm
Spurious Emission (1GHz-12.75GHz)	≅ -30dBm	≅ -30dBm
Noise Figure @ Max. Gain	≅ 6dB (Typical)	
Return Loss	≅ 3dB	
Time Delay	≅ 0.5µs	
MTBF	> 50000hours	
Power Supply	DC 12V 2A	
Power Consumption	< 10 Watt	
Impedence	50 ohm	

Mechanical Specifications

RF Connector	N-Female
Cooling	Heatsink convection cooling
Dimensions (DxWxH)	194 x 234 x 30 mm
Weight	1620 Gram
Environment Conditions	IP 40
Humidity	< 90%
Operating Temperature	-10C - 60C

