

# How to mount a Chaton Montee onto a jump ring

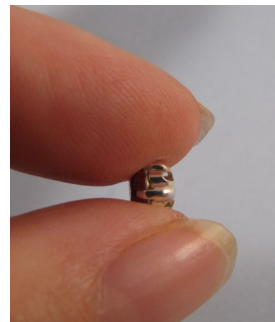
Tutorial by Mary Soucy

Visit [www.beadmeastory.com](http://www.beadmeastory.com) for kits and supplies using rhinestone montees with chain maille

1. Open a jump ring.  
Hold jump rings in your pliers with your right hand. You should be gripping the jump ring at around the 2 or 3 O'clock position.

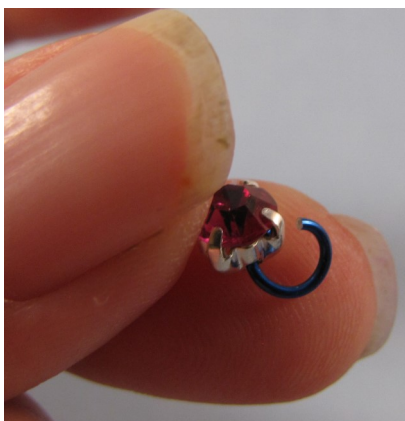


2. Hold montee sideways in left hand with rhinestone toward the inside of your hand and the bottom of the montee toward the right.



3. Put the left prong of the jump ring into one hole of the montee.

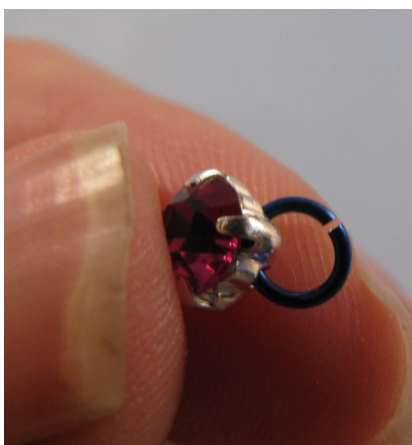
4. Once the jump ring is inside the first hole of the montee, tilt the rhinestone side of the montee upward now placing your thumb on the rhinestone and supporting the underside of the montee with your index finger.



Tip:

Stay relaxed throughout this process. You should not need to force anything. The more relaxed your hands are, the easier it will be to let the jump rings find their path.

5. Allow the left jump ring prong to find it's way through the adjacent montee hole (across the corner) of the montee. This often happens with no effort at all. If this does not happen naturally, tilt the montee up and down very slightly and/or move it toward or away from you. Again, these are tiny micro motions as the materials are very small.



6. If the jump ring still has not found it's way through the second hole, pull jump ring out, turn the montee 1/4 turn so that you will be entering the montee via a new hole and try steps 2-5 again.



\*\*\*Reverse if you are left handed holding montee in right hand and tool in left hand\*\*\*